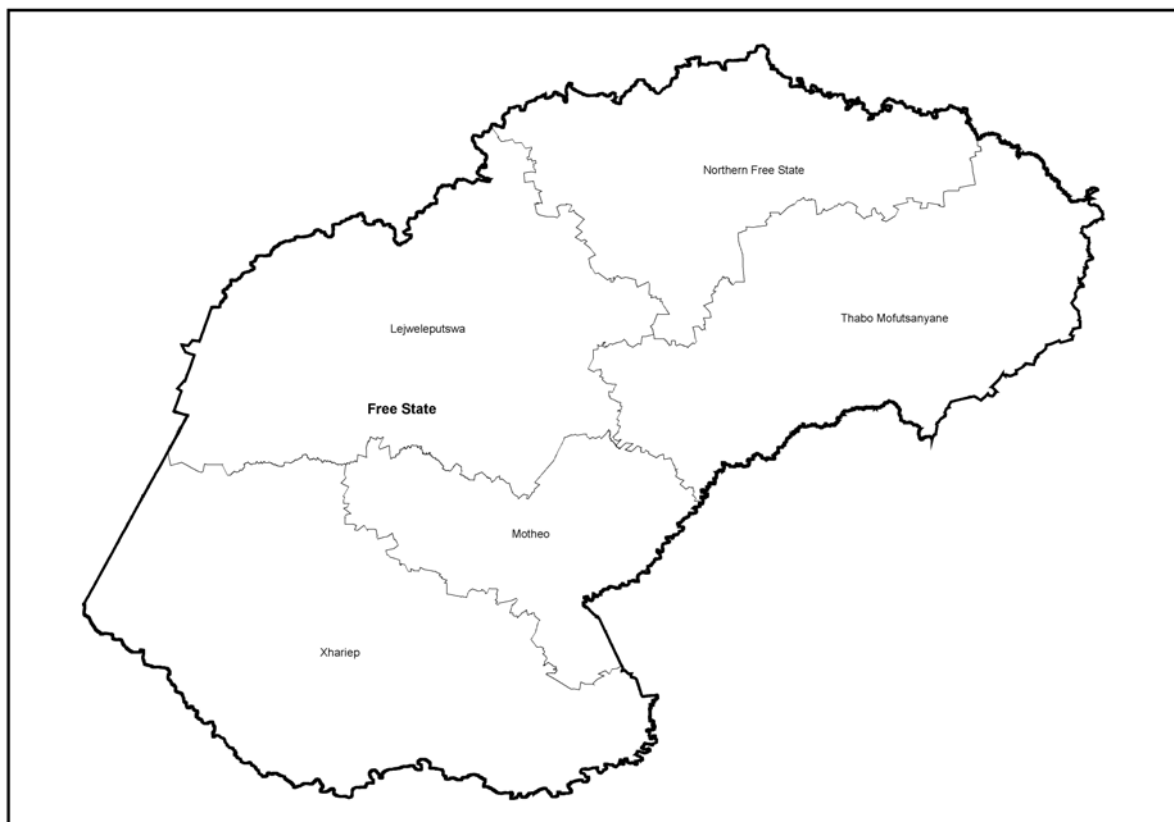


**MUNICIPAL DEMARCATION BOARD
ASSESSMENT OF CAPACITY FOR THE 2007/08 PERIOD
DISTRICT MUNICIPALITY REPORT**

Xhariep District Municipality (DC16)

Free State



NOTE:

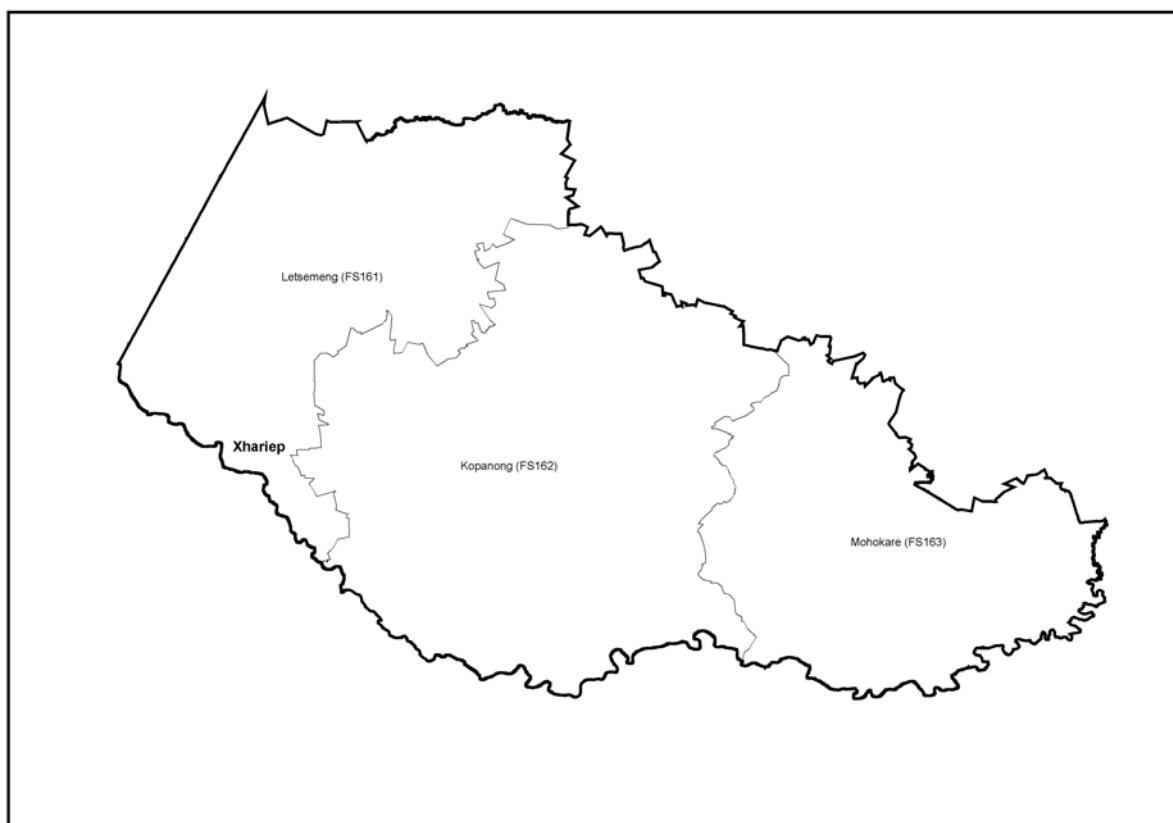
*In this report, Census 2001 data was used to determine population size, number of households and service backlogs. **Municipalities provided all other information in the 2002 -2007 MDB capacity assessments.** Therefore, the MDB takes no responsibility for any inaccurate information and the interpretation thereof.*

1 INTRODUCTION

The **Xhariep District Municipality (DC16)** is located in the south west of the **Free State**. It contains the following local municipalities within its area of jurisdiction:

- **Letsemeng Local Municipality (FS161)**
- **Kopanong Local Municipality (FS162)**
- **Mohokare Local Municipality (FS163)**

Map 1 showing the location of the Local Municipalities



Most municipal information contained in this report was obtained directly from questionnaires administered to municipalities by the MDB in August 2007, August 2006, August 2005, August 2004, October 2003 and October 2002. Municipal Managers or a senior manager were required to sign off the forms each year confirming the accuracy of the information provided to the Board. Following data capture, the questionnaires were sent back to municipalities for verification. Any

changes submitted by municipalities were captured and the database modified accordingly. Demographic and related data has been drawn from the 2001 Census.

The objectives of this report are to ***provide baseline information and possible capacity shifts in municipalities***, and to make recommendations for consideration by the MEC for Local Government for the adjustment of powers and functions for the district municipality and associated local municipalities for the 2007/2008 period. It also assesses each municipality's capacity to perform *specific powers and functions*, and not the internal organisational matters which, in the short and or long term, may affect the performance of a municipality. The trends recorded in the performance of functions, however, can be used by both Provincial and National Government as an early warning system. It may, for instance, identify a municipality which has consistently demonstrated poor capacity for the rendering of a number of functions in five capacity assessment periods. Thereafter, should it be deemed warranted, Provincial Department of Local Government should intervene to identify possible causes and institute measures to correct identified inadequacies.

2 GENERAL INFORMATION

2.1 Demographic Information

Table indicating population and total households (2001 Census)

MDBName	Name	Population	Population as % of District	Population as % of Province	No. of Households	Households as % of District	Households as % of Province
DC16	Xhariep District Municipality	135241	100.00%	5.00%	39307	100.00%	5.36%
FS161	Letsemeng Local Municipality	42981	31.78%	1.59%	12096	30.77%	1.65%
FS162	Kopanong Local Municipality	55941	41.36%	2.07%	17633	44.86%	2.40%
FS163	Mohokare Local Municipality	36319	26.86%	1.34%	9578	24.37%	1.31%

Table indicating urban and rural household information (2001 Census)

MDBName	Name	No. of Rural households	Rural hh as % of district	Rural hh as % of province	No. of Urban households	Urban hh as % of district	Urban hh as % of province
DC16	Xhariep District Municipality	10994	100.00%	7.38%	27884	100.00%	4.77%
FS161	Letsemeng Local Municipality	3579	32.55%	2.40%	8414	30.18%	1.44%
FS162	Kopanong Local Municipality	3843	34.96%	2.58%	13640	48.92%	2.33%
FS163	Mohokare Local Municipality	3572	32.49%	2.40%	5830	20.91%	1.00%

Comment – Demographics

The population of DC16 accounts for 5% of the population of the province. FS162 has the largest population with 41.36% of the district's population, and 2.07% of the provincial population, while FS163 has almost 27% of the population of the district and 1.34% of the provincial population.

DC16 is more urban than rural, with FS162 being the most urban local municipality (78% of households are urban) while FS163 has 62% urban households. All three local municipalities contribute approximately a third of the district's rural households each while the district makes up just over 7% of the rural households in the province. FS162 contributes the most number of urban households to the province (almost 49%) while FS163 contributes just over 20% of the district's urban households and 1% of the provincial urban households.

2.2 Service Levels for Core Functions

The information on the service levels was obtained from Stats SA and draws on the census results for 2001.

Table indicating the 2001 service levels for the core function -Water

MDB Name	Municipality Name	RDP Water service levels (Actual number of households)	HH with RDP Water service levels (%)	RDP Water backlog (%) within municipality	RDP Water backlog as % of district total	RDP Water backlog as % of province total
----------	-------------------	--	--------------------------------------	---	--	--

MDB Name	Municipality Name	RDP Water service levels (Actual number of households)	HH with RDP Water service levels (%)	RDP Water backlog (%) within municipality	RDP Water backlog as % of district total	RDP Water backlog as % of province total
DC16	Xhariep District Municipality	38031	96.75%	3.25%	100.00%	4.03%
FS161	Letsemeng Local Municipality	11460	94.74%	5.26%	49.84%	2.01%
FS162	Kopanong Local Municipality	17190	97.49%	2.51%	34.72%	1.40%
FS163	Mohokare Local Municipality	9381	97.94%	2.06%	15.44%	0.62%

Table indicating the 2001 service levels for the core function-Sanitation

MDB Name	Municipality Name	RDP Sanitation levels (Actual number of households)	RDP Sanitation service levels (%)	RDP Sanitation backlog (%)	RDP Sanitation backlog as % of district	RDP Sanitation backlog as % of province
DC16	Xhariep District Municipality	25852	65.77%	34.23%	100.00%	3.93%
FS161	Letsemeng Local Municipality	7500	62.00%	38.00%	34.16%	1.34%
FS162	Kopanong Local Municipality	12804	72.61%	27.39%	35.89%	1.41%
FS163	Mohokare Local Municipality	5548	57.92%	42.08%	29.95%	1.18%

Table indicating the 2001 service levels for the core function-Electricity

MDB Name	Municipality Name	RDP Electricity 2001 (actual)	RDP Electricity (%)	RDP Electricity backlog (%)	RDP Electricity backlog as % of district	RDP Electricity backlog as % of province
DC16	Xhariep District Municipality	29978	76.27%	23.73%	100.00%	4.96%
FS161	Letsemeng Local Municipality	8636	71.40%	28.60%	37.09%	1.84%
FS162	Kopanong Local Municipality	14363	81.46%	18.54%	35.05%	1.74%
FS163	Mohokare Local Municipality	6979	72.86%	27.14%	27.86%	1.38%

Table indicating the 2001 service levels for the core function-Refuse removal

MDB Name	Municipality Name	RDP Refuse removal 2001 (actual)	RDP Refuse removal (%)	RDP Refuse removal backlog (%)	RDP Refuse removal backlog as % of district	RDP Refuse removal backlog as % of province
DC16	Xhariep District Municipality	26603	67.68%	32.32%	100.00%	4.53%
FS161	Letsemeng Local Municipality	7598	62.81%	37.19%	35.41%	1.60%
FS162	Kopanong Local Municipality	13007	73.77%	26.23%	36.41%	1.65%
FS163	Mohokare Local Municipality	5998	62.62%	37.38%	28.18%	1.28%

Comment – Service Levels

DC16 provides over 96% of its households with access to RDP water service levels. FS161 provides just over 94% of its households with water while both FS162 and FS163 provide over 97% of their households with RDP water service levels. FS163 has the smallest backlog with just 2.06% of its households not receiving water while FS161 has a backlog of 5.26%. This represents almost half the backlog of the district. DC16 contributes to 4.03% of the provincial backlog with FS161

making up 2.01% of this total.

DC16 provides just over 65% of its households with access to RDP sanitation levels. FS163 has the highest backlog of 42.08% while FS162 has a backlog of just over 27%. Both FS161 and FS162 contribute to just over a third of the district's backlog at 34.16% and 35.89% respectively. DC16 contributes to almost 4% of the provincial backlog.

More than 75% of the district households have acceptable levels of RDP electricity. FS162 provides over 81% of its households with access to electricity while FS161 provides electricity to just over 71% of its households. DC16 contributes to almost 5% of the provincial backlog for electricity. FS161 makes up most of the district backlog (37.09%) while FS163 makes up almost 28% of the district backlog in providing acceptable levels of electricity.

DC16 provides more than two thirds of its households with acceptable service levels of refuse removal. FS162 provides the most number of households with a refuse removal service (almost 74%) while FS161 and FS163 each provide almost 63% of households with acceptable RDP refuse removal services. The district contributes just over 4.5% of the provincial backlog. FS161 and FS162 both provide over 35% of the district's backlog while FS163 provides just over 28% of the backlog for refuse removal in the district.

2.3 Broad Capacity Information

2.3.1 Financial and Staffing Information

Table indicating the operating budget information

MDB Code	Municipality Name	Opex Budget - Actual 2006/07	Opex Budget - Estimates 2007/08	% Change Operating Budget 2006/07 -2007/08	Opex Budget Per Capita 2006/07	Opex Budget Per Capita 2007/08
DC16	Xhariep District Municipality	19920988	19385915	-2.69%	147	143
FS161	Letsemeng Local Municipality	36668691	44820253	22.23%	853	1043
FS162	Kopanong Local Municipality	77101295	90218460	17.01%	1378	1613
FS163	Mohokare Local Municipality	40139185	40153031	0.03%	1105	1106

MDB Code	Municipality Name	Capex Budget - Actual 2006/07	Capex Budget - Estimated 2007/08	% Change Capex Budget 2006/07 - 2007/08	Capex Budget Per Capita 2006/07	Capex Budget Per Capita 2007/08
DC16	Xhariep District Municipality					
FS161	Letsemeng Local Municipality	25000000	41000000	64.00%	582	954
FS162	Kopanong Local Municipality	23965608.55	37220737	55.31%	428	665
FS163	Mohokare Local Municipality	15045450	19706000	30.98%	414	543

Table indicating broad income sources

MDB Code	Municipality Name	Total Operating Income 2007/08	Total Est Rates income 2007/08	Total Est Income from Service Charges	Total Est Income from Grant Income	% of Total Rates income 2007/08	% of Total Income from Service Charges	% of Total Income from Grant Income
DC16	Xhariep District Municipality	19385915			10907000			56.26%
FS161	Letsemeng Local Municipality	44820253	2897948	17450000	2400000	6.47%	38.93%	5.35%
FS162	Kopanong Local Municipality	90218460	9032761	38989173	70300001	10.01%	43.22%	77.92%
FS163	Mohokare Local Municipality	40153031	4114000	16320812	20385705	10.25%	40.65%	50.77%

Table indicating the staffing budget levels

MDB Code	Municipality Name	Opex Budget actual 06/07	Opex budget 07/08	Staff Budget Actual 06/07	Staff Budget 07/08	Staff budget as % of Total Opex 2006/2007	Staff budget as % of Total Opex 2007/2008
DC16	Xhariep District Municipality	19920988	19385915	11461953	11107189	57.54%	57.30%
FS161	Letsemeng Local Municipality	36668691	44820253	13000000	16510943	35.45%	36.84%
FS162	Kopanong Local Municipality	77101295	90218460	27373007	26033415	35.50%	28.86%
FS163	Mohokare Local Municipality	40139185	40153031	17702470	19623196	44.10%	48.87%

Table indicating the Annual Staffing Levels 2002 – 2007 (Actual Results)

MDB Code	Municipality Name	Employees 2002	Employees 2003	Employees 2004	Employees 2005	Employees 2006	Employees 2007
DC16	Xhariep District Municipality	31	41	39	45	50	55
FS161	Letsemeng Local Municipality	189	174	146	135	145	140
FS162	Kopanong Local Municipality	381	358	381	356	400	400
FS163	Mohokare Local Municipality	211	201	195	185	192	200

Table indicating percentage change in staffing levels year on year

MDB Code	Municipality Name	Staffing % change 2002 to 2003	Staffing % change 2003 to 2004	Staffing % change 2004 to 2005	Staffing % change 2005 to 2006	Staffing % change 2006 to 2007
DC16	Xhariep District Municipality	32.26%	-4.88%	15.38%	11.11%	10.00%
FS161	Letsemeng Local Municipality	-7.94%	-16.09%	-7.53%	7.41%	-3.45%
FS162	Kopanong Local Municipality	-6.04%	6.42%	-6.56%	12.36%	0.00%
FS163	Mohokare Local Municipality	-4.74%	-2.99%	-5.13%	3.78%	4.17%

Table indicating staff per capita ratios

MDB Code	Municipality Name	Staff per capita ratio 2002	Staff per capita ratio 2003	Staff per capita ratio 2004	Staff per capita ratio 2005	Staff per capita ratio 2006	Staff per capita ratio 2007
DC16	Xhariep District Municipality	4363	3299	3468	3006	2705	2459

MDB Code	Municipality Name	Staff per capita ratio 2002	Staff per capita ratio 2003	Staff per capita ratio 2004	Staff per capita ratio 2005	Staff per capita ratio 2006	Staff per capita ratio 2007
FS161	Letsemeng Local Municipality	227	247	294	318	296	307
FS162	Kopanong Local Municipality	147	156	147	157	140	140
FS163	Mohokare Local Municipality	172	181	186	196	189	182

Table indicating the existing staffing levels

MDB Code	Municipality Name	Number of approved positions 2007	Total number currently employed 2007	Number of vacant positions 2007	% posts filled 2007
DC16	Xhariep District Municipality	60	55	0	91.67%
FS161	Letsemeng Local Municipality	181	140	181	77.35%
FS162	Kopanong Local Municipality	390	400	0	102.56%
FS163	Mohokare Local Municipality	250	200	0	80.00%

Comment – Financial and Staffing capacity levels

DC16 has had a decrease in budget of over 2%. All local municipalities have however had increases in operating budget since the previous financial year. These range from a 0.03% increase in FS163 to a 22.23% increase in FS161. Per capita budgets remain the highest in FS163 (R1613) and the lowest in FS161 (R1043).

None of the municipalities has had decreases in Capex budgets since the previous financial year. FS161 has had the largest increase in Capex of 64% while FS163 has had an increase of only 31%. Per capita budgets are the highest in FS161 (R954) and the lowest in FS163 (R543).

FS161 receives the lowest percentage of its total operating income from rates (just over 6%) while FS162 and FS163 each receive just over 10% of their income from rates. When looking at service charges income, FS162 has the highest, receiving just over 43% of its income from service charges. FS161 has the lowest proportion of its operating income coming from service charges (almost 39%). The percentage of total income from grant income is highest in FS162 (77.92%) and lowest in FS161 (5.35%).

Both FS161 and FS162 spend just over a third of their Opex budget on staff budget which is close to the optimum percentage to spend on staff. DC16 however spends almost 58% of its Opex budget on staff while FS163 spends 44%.

DC16 has had the largest change in staffing figures with a 10% increase since the previous financial year. FS162 has had no change in staffing figures while FS163 has had a 4% increase. FS161 has had a decrease in staffing figures of 3.45% since the previous financial year.

DC16 has the poorest staff per capita ratio of 1 to 2459 while FS162 has the lowest, at one staff member per 140 people. DC16 and FS163 have had decreases in staff per capita ratios since 2006, FS162 has had no change and FS161 has had an increase.

None of the municipalities has 100% of its posts filled. FS162 employs more than 100% of its posts (102.56%) while the remaining municipalities have more than three quarters of their posts filled.

2.3.2 Management Profile

Table showing information on Municipal Managers

MDB Code	Municipality Name	Qualification	Years of local Government Experience	Current position Section 57/Acting/Other	Years in existing position	If acting – reason provided
DC16	Xhariep District Municipality	Doctrate - Public Admin B.Comm	17	MSA Section 57	1	
FS161	Letsemeng Local Municipality	Diploma Midwifery B Soc	12	MSA Section 57	6	
FS162	Kopanong Local Municipality	B Admin	7	MSA Section 57	1	
FS163	Mohokare Local Municipality	Primary Teachers Diploma	05	MSA Section 57	04	

Table showing information on Financial Managers

MDB Code	Municipality Name	Qualification	Years of local Government Experience	Current position Section 57/Acting/Other	Years in existing position	If acting – reason provided
DC16	Xhariep District Municipality	B.Comm - Accounting	3	MSA Section 57	2	
FS161	Letsemeng Local Municipality	B.Comm Audit articles	3	MSA Section 57	1	
FS162	Kopanong Local Municipality	B Comm	5	MSA Section 57	5	
FS163	Mohokare Local Municipality	B A Degree`	15	MSA Section 57	14	

Table showing information on Corporate Services Managers

MDB Code	Municipality Name	Qualification	Years of local Government Experience	Current position Section 57/Acting/Other	Years in existing position	If acting – reason provided
DC16	Xhariep District Municipality	Primary Teachers Certificate	2	MSA Section 57	1	
FS161	Letsemeng Local Municipality	LLB		MSA Section 57		
FS162	Kopanong Local Municipality	B Admin	5	MSA Section 57		
FS163	Mohokare Local Municipality					

Table showing information on Technical Services Managers

MDB Code	Municipality Name	Qualification	Years of local Government Experience	Current position Section 57/Acting/Other	Years existing position	If acting – reason provided
DC16	Xhariep District Municipality	BTech Civil Engineering	3	MSA Section 57	2	
FS161	Letsemeng Local Municipality	B SC	2	MSA Section 57	1	
FS162	Kopanong Local Municipality	Nat. Diploma Law	8	MSA Section 57	5	
FS163	Mohokare Local Municipality	Matric	05	Acting	05	Post to be advertised

Table showing information on IDP Managers

MDB Code	Municipality Name	Qualification	Years of local Government Experience	Current position Section 57/Acting/Other	Years in existing position	If acting – reason provided
----------	-------------------	---------------	--------------------------------------	--	----------------------------	-----------------------------

DC16	Xhariep District Municipality					
FS161	Letsemeng Local Municipality	Diploma B Soc	12	MSA Section 57	6	
FS162	Kopanong Local Municipality	B-Ed Honours	1	Other	1	
FS163	Mohokare Local Municipality	IT Certificate	03	Acting		Post to be advertised

Comment – Management Profile

Municipal Managers

All of the municipal managers have some form of tertiary education, however only two of these are relevant to the position (DC16 and FS162). DC16's municipal manager has 17 years of local government experience while the manager in FS163 has only 5 years of experience. All managers are MSA Section 57 appointments. None of the managers has been in the position for more than six years.

Financial Managers

All four financial managers have degrees with only one not being relevant to the position (FS163). Local government experience ranges from 15 years in FS163 to just 3 years in DC16 and FS161. All of the financial managers are MSA Section 57 appointments. The manager in FS163 has been in position for 14 years while the remaining managers have been in position for five years or less.

Corporate Services Managers

FS163 did not provide information on its corporate services manager. The remaining three corporate services managers have tertiary qualifications. All managers are MSA Section 57 appointments. None of the managers has more than five years of local government experience.

Technical Services Managers

With the exception of FS163, the remaining managers have tertiary qualifications. Local government experience ranges from 2 years in FS161 to 8 years in FS162. There is one acting manager (FS163). The managers in FS162 and FS163 have each been in position for 5 years while the managers in DC16 and FS161 have been in position for two years or less.

IDP Managers

DC16 did not provide information on its IDP manager. The remaining IDP managers have tertiary qualifications. Only one manager has more than five years of local government experience (FS161). The manager in FS163 is in an acting position. The FS161 manager has been in position for the longest, at 6 years.

3 CAPACITY ASSESSMENT OF FUNCTIONS

SCHEDULE 4 PART B

3.1 Air pollution

Department rendering the service – Air pollution

MDB Code	Municipality Name	Name of Department Performing function	Only department performing function	Name of other department/s performing the function	Description of function performed by municipality
DC16	Xhariep District Municipality				
FS161	Letsemeng Local Municipality	Technical Services	Yes		Nuisances control
FS162	Kopanong Local Municipality				
FS163	Mohokare Local Municipality				

Function Management – Air pollution

MDB Code	Municipality Name	Qualification	Years of local Government Experience	Current position Section 57/Acting/Other	Years in existing position	If acting – reason provided
DC16	Xhariep District Municipality					
FS161	Letsemeng Local Municipality			Other	3	
FS162	Kopanong Local Municipality					
FS163	Mohokare Local Municipality					

Authority - Air pollution

MDB Code	Municipality Name	Authority for the function	Municipality understood authority	
			Authorised as Answered	Understands
DC16	Xhariep District Municipality	-		No
FS161	Letsemeng Local Municipality	Yes	Local	Yes
FS162	Kopanong Local Municipality	Yes		No
FS163	Mohokare Local Municipality	Yes		No

Service Provision - Air pollution

MDB Code	Municipality Name	Indicated that the municipality performed the function					
		2002	2003	2004	2005	2006	2007
DC16	Xhariep District Municipality	No	No	No	No	No	No
FS161	Letsemeng Local Municipality	No	No	No	No	No	Yes
FS162	Kopanong Local Municipality	No	No	No	No	No	No
FS163	Mohokare Local	No	No	No	Yes	Yes	No

	Municipality						
--	--------------	--	--	--	--	--	--

MDB Code	Municipality Name	Municipality makes use of external service provider	Section 78 complete	Service level agreement in place	Municipality makes use of external service provider	Section 78 complete	Service level agreement in place
		2006	2006	2006	2007	2007	2007
DC16	Xhariep District Municipality						
FS161	Letsemeng Local Municipality						No
FS162	Kopanong Local Municipality						
FS163	Mohokare Local Municipality		No	No			

Budget information – Air pollution

MDB Code	Municipality Name	Operating Budget for function					
		2002/2003	2003/2004	2004/2005	2005/2006	2006/2007	2007/2008
DC16	Xhariep District Municipality			0	0	0	0
FS161	Letsemeng Local Municipality			0	0	0	748000
FS162	Kopanong Local Municipality			0	0	0	0
FS163	Mohokare Local Municipality			0	0	0	0

MDB Code	Municipality Name	Line item or part allocation				
		2003/2004	2004/2005	2005/2006	2006/2007	2007/2008
DC16	Xhariep District Municipality					
FS161	Letsemeng Local Municipality					Part
FS162	Kopanong Local Municipality					
FS163	Mohokare Local Municipality					

MDB Code	Municipality Name	Per capita budget			
		2004/2005	2005/2006	2006/2007	2007/2008
DC16	Xhariep District Municipality				
FS161	Letsemeng Local Municipality				17.40
FS162	Kopanong Local Municipality				
FS163	Mohokare Local Municipality				

Staffing – Air pollution

MDB Code	Municipality Name	Staff Available for the function					
		2002	2003	2004	2005	2006	2007
DC16	Xhariep District Municipality			0	0	0	0
FS161	Letsemeng Local Municipality			0	0	0	1
FS162	Kopanong Local Municipality			0	0	0	0

FS163	Mohokare Local Municipality	0		0	0	1	0
-------	-----------------------------	---	--	---	---	---	---

MDB Code	Municipality Name	Staff per capita ratio				Staff Vacancies		
		2004	2005	2006	2007	2005	2006	2007
DC16	Xhariep District Municipality							
FS161	Letsemeng Local Municipality				42981			
FS162	Kopanong Local Municipality							
FS163	Mohokare Local Municipality			36322			1	

Equipment – Air pollution

MDB Code	Municipality Name	Equipment available for the function					
		2002	2003	2004	2005	2006	2007
DC16	Xhariep District Municipality	No	No	No	No	No	No
FS161	Letsemeng Local Municipality	No	No	No	No	No	No
FS162	Kopanong Local Municipality	No	No	No	No	No	No
FS163	Mohokare Local Municipality	No	No	No	No	No	No

Comments and Recommendations – Air pollution

Comments:

FS161 is the only municipality that performs the air pollution function and has indicated nuisances control as the main aspect of the function.

No information was provided with regard to the manager's tertiary qualifications or local government experience. The manager has however been in the position for 3 years.

FS161 has budget available for this function, one staff member and no equipment.

In summary:

FS161 has capacity to perform this function.

Recommendation for the adjustment of the function:

No adjustments are recommended by the MDB for the 2007/08 assessment period.

3.2 Building regulations

Department rendering the service – Building regulations

MDB Code	Municipality Name	Name of Department Performing function	Only department performing function	Name of other department/s performing the function	Description of function performed by municipality
DC16	Xhariep District Municipality				
FS161	Letsemeng Local Municipality	Technical Services	Yes		Check building plans for compliance Check foundations Encroachment into municipal boundary
FS162	Kopanong Local Municipality	Technical Services	Yes		Examine plans Inspect Building and sites
FS163	Mohokare Local Municipality	Community Services	Yes		Plan approval

Function Management – Building regulations

MDB Code	Municipality Name	Qualification	Years of local Government Experience	Current position Section 57/Acting/Other	Years in existing position	If acting – reason provided
DC16	Xhariep District Municipality					
FS161	Letsemeng Local Municipality	Environmental Health Diploma	7	Permanent	7	
FS162	Kopanong Local Municipality	Diploma - Education	1	Permanent		
FS163	Mohokare Local Municipality	Diploma - Civil Eng	2	Acting		To be advertised

Authority - Building regulations

MDB Code	Municipality Name	Authority for the function	Municipality understood authority	
			Authorised as Answered	Understands
DC16	Xhariep District Municipality	-		No
FS161	Letsemeng Local Municipality	Yes	Local	Yes
FS162	Kopanong Local Municipality	Yes	Local	Yes
FS163	Mohokare Local Municipality	Yes	Local	Yes

Service Provision - Building regulations

MDB Code	Municipality Name	Indicated that the municipality performed the function					
		2002	2003	2004	2005	2006	2007
DC16	Xhariep District Municipality	No	No	No	No	No	No
FS161	Letsemeng Local Municipality	No	Yes	Yes	Yes	Yes	Yes
FS162	Kopanong Local Municipality	Yes	No	Yes	Yes	Yes	Yes
FS163	Mohokare Local Municipality	Yes	No	Yes	Yes	Yes	Yes

MDB Code	Municipality Name	Municipality makes use of external service provider	Section 78 complete	Service level agreement in place	Municipality makes use of external service provider	Section 78 complete	Service level agreement in place
		2006	2006	2006	2007	2007	2007
DC16	Xhariep District Municipality						
FS161	Letsemeng Local Municipality		No	No		No	No
FS162	Kopanong Local Municipality		No	No		No	No
FS163	Mohokare Local Municipality		No	No		No	No

Budget information – Building regulations

MDB Code	Municipality Name	Operating Budget for function					
		2002/2003	2003/2004	2004/2005	2005/2006	2006/2007	2007/2008

DC16	Xhariep District Municipality			0	0	0	0
FS161	Letsemeng Local Municipality		68650	0	122308	221958	270000
FS162	Kopanong Local Municipality	314314	296963	292918	0	110000	795602
FS163	Mohokare Local Municipality			150000	0	0	40153031

MDB Code	Municipality Name	Line item or part allocation				
		2003/2004	2004/2005	2005/2006	2006/2007	2007/2008
DC16	Xhariep District Municipality					
FS161	Letsemeng Local Municipality	Part		Line;	Line;	Part
FS162	Kopanong Local Municipality	Part	Part;		Line;	Part
FS163	Mohokare Local Municipality		Part;			Part

MDB Code	Municipality Name	Per capita budget			
		2004/2005	2005/2006	2006/2007	2007/2008
DC16	Xhariep District Municipality				
FS161	Letsemeng Local Municipality		2.85	5.16	6.28
FS162	Kopanong Local Municipality	5.24		1.97	14.22
FS163	Mohokare Local Municipality	4.13			1105.57

Staffing – Building regulations

MDB Code	Municipality Name	Staff Available for the function					
		2002	2003	2004	2005	2006	2007
DC16	Xhariep District Municipality			0	0	0	0
FS161	Letsemeng Local Municipality		1	3	2	1	1
FS162	Kopanong Local Municipality	12	1	1	1	1	1
FS163	Mohokare Local Municipality	1		2	1	1	1

MDB Code	Municipality Name	Staff per capita ratio				Staff Vacancies		
		2004	2005	2006	2007	2005	2006	2007
DC16	Xhariep District Municipality							
FS161	Letsemeng Local Municipality	14327	21491	42981	42981			
FS162	Kopanong Local Municipality	55945	55945	55945	55941			2
FS163	Mohokare Local Municipality	18161	36322	36322	36319		1	1

Equipment – Building regulations

MDB Code	Municipality Name	Equipment available for the function					
		2002	2003	2004	2005	2006	2007
DC16	Xhariep District Municipality	No	No	No	No	No	No
FS161	Letsemeng Local Municipality	No	Yes	Yes	Yes	Yes	Yes
FS162	Kopanong Local Municipality	Yes	No	Yes	Yes	Yes	Yes
FS163	Mohokare Local Municipality	No	No	Yes	Yes	No	Yes

Comments and Recommendations – Building regulations

Comments:

All local municipalities perform this function and have indicated that they check and approve building plans.

All three managers have tertiary qualifications. Local government experience ranges from 1 year in FS162 to 7 years in FS161. The manager in FS161 has been in position for 7 years. There is one acting manager (FS163).

There is budget available for this function in all three local municipalities and these all show an increase since the previous financial year. Per capita budgets range from R6.28 in FS161 to R1105.57 in FS163.

Each municipality has one staff member available for the function and there are vacancies in FS162 and FS163.

All three local municipalities have equipment available for the function.

In summary:

The local municipalities have capacity to perform this function.

Recommendation for the adjustment of the function:

No adjustments are recommended by the MDB for the 2007/08 assessment period.

3.3 Child care facilities

Department rendering the service – Child care facilities

MDB Code	Municipality Name	Name of Department Performing function	Only department performing function	Name of other department/s performing the function	Description of function performed by municipality
DC16	Xhariep District Municipality				
FS161	Letsemeng Local Municipality	Administration	Yes		Partial child care programmes
FS162	Kopanong Local Municipality				
FS163	Mohokare Local Municipality				

Function Management – Child care facilities

MDB Code	Municipality Name	Qualification	Years of local Government Experience	Current position Section 57/Acting/Other	Years in existing position	If acting – reason provided
DC16	Xhariep District Municipality					
FS161	Letsemeng Local Municipality	Matric		Permanent		
FS162	Kopanong Local Municipality					
FS163	Mohokare Local Municipality					

Authority - Child care facilities

MDB Code	Municipality Name	Authority for the function	Municipality understood authority	
			Authorised as Answered	Understands
DC16	Xhariep District Municipality	-		No
FS161	Letsemeng Local Municipality	Yes	Local	Yes
FS162	Kopanong Local Municipality	Yes		No
FS163	Mohokare Local Municipality	Yes		No

Service Provision - Child care facilities

MDB Code	Municipality Name	Indicated that the municipality performed the function					
		2002	2003	2004	2005	2006	2007
DC16	Xhariep District Municipality	No	No	No	No	No	No
FS161	Letsemeng Local Municipality	No	No	No	No	No	Yes
FS162	Kopanong Local Municipality	No	No	No	No	No	No
FS163	Mohokare Local Municipality	No	No	No	Yes	Yes	No

MDB Code	Municipality Name	Municipality makes use of external service provider	Section 78 complete	Service level agreement in place	Municipality makes use of external service provider	Section 78 complete	Service level agreement in place
		2006	2006	2006	2007	2007	2007
DC16	Xhariep District Municipality						
FS161	Letsemeng Local Municipality		No	No		No	No
FS162	Kopanong Local Municipality						
FS163	Mohokare Local Municipality		No	No			

Budget information – Child care facilities

MDB Code	Municipality Name	Operating Budget for function					
		2002/2003	2003/2004	2004/2005	2005/2006	2006/2007	2007/2008
DC16	Xhariep District Municipality			0	0	0	0
FS161	Letsemeng Local Municipality			0	0	0	80000
FS162	Kopanong Local Municipality			0	0	0	0
FS163	Mohokare Local Municipality			0	0	0	0

MDB Code	Municipality Name	Line item or part allocation				
		2003/2004	2004/2005	2005/2006	2006/2007	2007/2008
DC16	Xhariep District Municipality					
FS161	Letsemeng Local Municipality					Part
FS162	Kopanong Local Municipality					

FS163	Mohokare Local Municipality					
-------	-----------------------------	--	--	--	--	--

MDB Code	Municipality Name	Per capita budget			
		2004/2005	2005/2006	2006/2007	2007/2008
DC16	Xhariep District Municipality				
FS161	Letsemeng Local Municipality				1.86
FS162	Kopanong Local Municipality				
FS163	Mohokare Local Municipality				

Staffing – Child care facilities

MDB Code	Municipality Name	Staff Available for the function					
		2002	2003	2004	2005	2006	2007
DC16	Xhariep District Municipality			0	0	0	0
FS161	Letsemeng Local Municipality			0	0	0	1
FS162	Kopanong Local Municipality			0	0	0	0
FS163	Mohokare Local Municipality			0	1	1	0

MDB Code	Municipality Name	Staff per capita ratio				Staff Vacancies		
		2004	2005	2006	2007	2005	2006	2007
DC16	Xhariep District Municipality							
FS161	Letsemeng Local Municipality				42981			
FS162	Kopanong Local Municipality							
FS163	Mohokare Local Municipality		36322	36322			1	

Equipment – Child care facilities

MDB Code	Municipality Name	Equipment available for the function					
		2002	2003	2004	2005	2006	2007
DC16	Xhariep District Municipality	No	No	No	No	No	No
FS161	Letsemeng Local Municipality	No	No	No	No	No	Yes
FS162	Kopanong Local Municipality	No	No	No	No	No	No
FS163	Mohokare Local Municipality	Yes	No	No	Yes	No	No

Comments and Recommendations – Child care facilities

Comments:

FS161 is the only municipality that performs the child care function and has indicated that it provides partial child care programmes.

The manager in charge of this function has a matric only and is in a permanent position.

FS161 has budget available for this function, one staff member and equipment.

In summary:

FS161 has capacity to perform this function.

Recommendation for the adjustment of the function:

No adjustments are recommended by the MDB for the 2007/08 assessment period.

3.4 Electricity reticulation**Department rendering the service – Electricity reticulation**

MDB Code	Municipality Name	Name of Department Performing function	Only department performing function	Name of other department/s performing the function	Description of function performed by municipality
DC16	Xhariep District Municipality				
FS161	Letsemeng Local Municipality	Technical Services	Yes		Supply Transmission Reticulation Distribution of electricity
FS162	Kopanong Local Municipality	Technical Services	Yes		Electricity supply to households Attend to faults
FS163	Mohokare Local Municipality	Infrastructure Services	Yes		Providing electricity to households

Function Management – Electricity reticulation

MDB Code	Municipality Name	Qualification	Years of local Government Experience	Current position Section 57/Acting/Other	Years in existing position	If acting – reason provided
DC16	Xhariep District Municipality					
FS161	Letsemeng Local Municipality	Diploma Electrical	11	Permanent	11	
FS162	Kopanong Local Municipality	Nat Diploma Law	8	MSA Sec 57	5	
FS163	Mohokare Local Municipality	Matric	5	Acting	5	Post to be advertised

Authority - Electricity reticulation

MDB Code	Municipality Name	Authority for the function	Municipality understood authority	
			Authorised as Answered	Understands
DC16	Xhariep District Municipality	No		No
FS161	Letsemeng Local Municipality	Yes	Local	Yes
FS162	Kopanong Local Municipality	Yes	Local	Yes
FS163	Mohokare Local Municipality	Yes	Local	Yes

Service Provision - Electricity reticulation

MDB Code	Municipality Name	Indicated that the municipality performed the function					
		2002	2003	2004	2005	2006	2007
DC16	Xhariep District Municipality	No	No	No	No	No	No
FS161	Letsemeng Local Municipality	Yes	Yes	Yes	Yes	No	No
FS162	Kopanong Local Municipality	No	Yes	No	No	Yes	No
FS163	Mohokare Local Municipality	No	No	No	No	No	No

MDB Code	Municipality Name	Municipality makes use of external service provider	Section 78 complete	Service level agreement in place	Municipality makes use of external service provider	Section 78 complete	Service level agreement in place
		2006	2006	2006	2007	2007	2007
DC16	Xhariep District Municipality						
FS161	Letsemeng Local Municipality	Eskom	Yes	Yes	Eskom	Yes	Yes
FS162	Kopanong Local Municipality	Centlec	Yes	Yes	Centlec	Yes	Yes
FS163	Mohokare Local Municipality	Centlec	No	Yes	Centlec	Yes	Yes

Budget information – Electricity reticulation

MDB Code	Municipality Name	Operating Budget for function					
		2002/2003	2003/2004	2004/2005	2005/2006	2006/2007	2007/2008
DC16	Xhariep District Municipality			0	0	0	0
FS161	Letsemeng Local Municipality	4425455	4823595	5879388	5315917	7724361	18108444
FS162	Kopanong Local Municipality	10789470	11329810	0	450000	15457410	17987066
FS163	Mohokare Local Municipality	4767670	3921820	5868850	900000	730000	480000

MDB Code	Municipality Name	Line item or part allocation				
		2003/2004	2004/2005	2005/2006	2006/2007	2007/2008
DC16	Xhariep District Municipality					
FS161	Letsemeng Local Municipality	Line	Line;	Line;	Line;	Line
FS162	Kopanong Local Municipality	Line		Line;	Line;	Line
FS163	Mohokare Local Municipality	Line	Line;	Line;	Part;	Line

MDB Code	Municipality Name	Per capita budget			
		2004/2005	2005/2006	2006/2007	2007/2008
DC16	Xhariep District Municipality				
FS161	Letsemeng Local Municipality	136.79	123.68	179.72	421.31
FS162	Kopanong Local Municipality		8.04	276.30	321.54
FS163	Mohokare Local Municipality	161.58	24.78	20.10	13.22

Income information – Electricity reticulation

MDB Code	Operating Income		Function Income as a % of Operation Income	
	Actual 2006/2007	Estimated 2007/2008	2006/2007	2007/2008
DC16		0		0.00%
FS161	8119647	18108444	22.14%	40.40%
FS162	17957584	17987066	23.29%	19.94%
FS163	6778120	480000	16.89%	1.20%

Staffing – Electricity reticulation

MDB Code	Municipality Name	Staff Available for the function					
		2002	2003	2004	2005	2006	2007
DC16	Xhariep District Municipality			0	0	0	0
FS161	Letsemeng Local Municipality	8	8	11	8	4	6
FS162	Kopanong Local Municipality	8	5	0	2	2	1
FS163	Mohokare Local Municipality	2	4	4	0	2	1

MDB Code	Municipality Name	Staff per capita ratio				Staff Vacancies		
		2004	2005	2006	2007	2005	2006	2007
DC16	Xhariep District Municipality							
FS161	Letsemeng Local Municipality	3907	5373	10745	7164		3	
FS162	Kopanong Local Municipality		27973	27973	55941			
FS163	Mohokare Local Municipality	9081		18161	36319			

Equipment – Electricity reticulation

MDB Code	Municipality Name	Equipment available for the function					
		2002	2003	2004	2005	2006	2007
DC16	Xhariep District Municipality	No	No	No	No	No	No
FS161	Letsemeng Local Municipality	Yes	Yes	Yes	Yes	Yes	Yes
FS162	Kopanong Local Municipality	Yes	Yes	No	Yes	Yes	Yes
FS163	Mohokare Local Municipality	No	No	Yes	No	Yes	Yes

Comments and Recommendations – Electricity reticulation**Comments:**

The electricity function is provided by all three local municipalities. Each municipality has indicated that it renders electricity supply with regard to this function. All municipalities manage the electricity function from a single department.

The manager for FS163 has a matric only while the other two managers have tertiary qualifications. Local government experience ranges from 5 years in FS163 to 11 years in FS161. The manager in FS163 is in an acting position. Both managers in FS162 and FS163 have been in position for five years while the manager in FS161 has been in position the longest, at 11 years.

All three local municipalities make use of external service providers for this function. Section 78s have been completed and each municipality has a service level agreement in place.

Budget is available in each municipality for the electricity function. FS162 was the only municipality that had a decrease in budget since the previous financial year. Per capita budgets range from R13.22 in FS163 to R421.31 in FS161. In addition, the function provides over 40% of the municipality's operating income in FS161 and just 1.2% of the operating income in FS163.

Staff are available in each of the municipalities for this function. There are no staff vacancies.

All three local municipalities have equipment for this function.

In summary:

The local municipalities have capacity to perform this function.

3.5 Fire Fighting

Department rendering the service – Fire Fighting

MDB Code	Municipality Name	Name of Department Performing function	Only department performing function	Name of other department/s performing the function	Description of function performed by municipality
DC16	Xhariep District Municipality				
FS161	Letsemeng Local Municipality	Technical Services	Yes		Fire fighting Prevention
FS162	Kopanong Local Municipality	Technical Services	Yes		Attend to veld fires Attend to fires at households
FS163	Mohokare Local Municipality	Community Services	Yes		Attend to local and veld fires Attend to accidents

Function Management – Fire Fighting

MDB Code	Municipality Name	Qualification	Years of local Government Experience	Current position Section 57/Acting/Other	Years in existing position	If acting – reason provided
DC16	Xhariep District Municipality					
FS161	Letsemeng Local Municipality	Matric N4	3	Other	3	
FS162	Kopanong Local Municipality	Nat Diploma Law	8	MSA Sec 57	5	
FS163	Mohokare Local Municipality	Diploma - Traffic	13	Permanent	7	

Authority - Fire Fighting

MDB Code	Municipality Name	Authority for the function	Municipality understood authority	
			Authorised as Answered	Understands
DC16	Xhariep District Municipality	No		No
FS161	Letsemeng Local Municipality	Yes, including DM function	District	No
FS162	Kopanong Local Municipality	Yes, including DM function	Local	Yes
FS163	Mohokare Local Municipality	Yes, including DM function	Local	Yes

Service Provision - Fire Fighting

MDB Code	Municipality Name	Indicated that the municipality performed the function					
		2002	2003	2004	2005	2006	2007
DC16	Xhariep District Municipality	No	No	No	No	No	No
FS161	Letsemeng Local Municipality	Yes	Yes	Yes	Yes	Yes	Yes
FS162	Kopanong Local Municipality	Yes	Yes	Yes	No	Yes	Yes
FS163	Mohokare Local Municipality	Yes	Yes	No	Yes	Yes	Yes

MDB Code	Municipality Name	Municipality makes use of external service provider	Section 78 complete	Service level agreement in place	Municipality makes use of external service provider	Section 78 complete	Service level agreement in place
		2006	2006	2006	2007	2007	2007
DC16	Xhariep District Municipality						
FS161	Letsemeng Local Municipality		No	No		No	No
FS162	Kopanong Local Municipality		No	No		No	No
FS163	Mohokare Local Municipality		No	No		No	No

Budget information – Fire Fighting

MDB Code	Municipality Name	Operating Budget for function					
		2002/2003	2003/2004	2004/2005	2005/2006	2006/2007	2007/2008
DC16	Xhariep District Municipality			0	0	0	0
FS161	Letsemeng Local Municipality		29999	64453	90344	121344	748009
FS162	Kopanong Local Municipality	296097	133240	195487	433709	292288	230857
FS163	Mohokare Local Municipality	67684	80000	0	50000	55000	535838

MDB Code	Municipality Name	Line item or part allocation				
		2003/2004	2004/2005	2005/2006	2006/2007	2007/2008
DC16	Xhariep District Municipality					
FS161	Letsemeng Local Municipality	Line	Line;	Line;	Line;	Line
FS162	Kopanong Local Municipality	Line	Line;	Line;	Line;	Line
FS163	Mohokare Local Municipality	Part		Part;	Part;	Part

MDB Code	Municipality Name	Per capita budget			
		2004/2005	2005/2006	2006/2007	2007/2008
DC16	Xhariep District Municipality				
FS161	Letsemeng Local Municipality	1.50	2.10	2.82	17.40
FS162	Kopanong Local Municipality	3.49	7.75	5.22	4.13
FS163	Mohokare Local Municipality		1.38	1.51	14.75

Staffing – Fire Fighting

MDB Code	Municipality Name	Staff Available for the function					
		2002	2003	2004	2005	2006	2007
DC16	Xhariep District Municipality			0	0	0	0
FS161	Letsemeng Local Municipality	1	30	25	5	3	5
FS162	Kopanong Local Municipality	9	34	9	4	4	6
FS163	Mohokare Local Municipality	1	22	0	21	20	20

MDB Code	Municipality Name	Staff per capita ratio				Staff Vacancies		
		2004	2005	2006	2007	2005	2006	2007
DC16	Xhariep District Municipality							
FS161	Letsemeng Local Municipality	1719	8596	14327	8596			
FS162	Kopanong Local Municipality	6216	13986	13986	9324			
FS163	Mohokare Local Municipality		1730	1816	1816		20	20

Equipment – Fire Fighting

MDB Code	Municipality Name	Equipment available for the function					
		2002	2003	2004	2005	2006	2007
DC16	Xhariep District Municipality	No	No	No	No	No	No
FS161	Letsemeng Local Municipality	Yes	Yes	Yes	Yes	Yes	No
FS162	Kopanong Local Municipality	Yes	Yes	Yes	Yes	Yes	Yes
FS163	Mohokare Local Municipality	Yes	Yes	No	Yes	Yes	Yes

Comments and Recommendations – Fire Fighting

Comments:

All three local municipalities perform the fire fighting function from a single department and all municipalities seem to render the correct aspects of the function.

The manager in FS161 has a matric only. The other two managers have tertiary qualifications. Local government experience ranges from 3 years in FS161 to 13 years in FS163. The manager in FS163 has been in position for the longest (7 years).

All three local municipalities have budget available for this function and FS161 and FS163 show an increase from the previous financial year. Per capita budgets range from R4.13 in FS162 to R17.40 in FS161.

Each local municipality has staff available for the function. FS163 has 20 staff vacancies for the fire fighting function.

FS161 is the only local municipality that does not have equipment available for the function.

In summary:

The local municipalities have capacity to perform this function.

Recommendation for the adjustment of the function:

No adjustments are recommended by the MDB for the 2007/08 assessment period.

3.6 Local tourism

Department rendering the service – Local tourism

MDB Code	Municipality Name	Name of Department Performing function	Only department performing function	Name of other department/s performing the function	Description of function performed by municipality
DC16	Xhariep District Municipality	Led and Tourism	Yes		Promote Tourism Maintenance of Sites
FS161	Letsemeng Local Municipality	Administration	Yes		Promote Regulate tourism
FS162	Kopanong Local Municipality	Office of Municipal Manager	Yes		Promote tourism Maintenance of tourist attractions

FS163	Mohokare Local Municipality				
-------	-----------------------------	--	--	--	--

Function Management – Local tourism

MDB Code	Municipality Name	Qualification	Years of local Government Experience	Current position Section 57/Acting/Other	Years in existing position	If acting – reason provided
DC16	Xhariep District Municipality	BA - Public Admin	4	Permanent	4	
FS161	Letsemeng Local Municipality	Matric	1	Permanent	1	
FS162	Kopanong Local Municipality	Hon B - Ed	2	Permanent	1	
FS163	Mohokare Local Municipality					

Authority - Local tourism

MDB Code	Municipality Name	Authority for the function	Municipality understood authority	
			Authorised as Answered	Understands
DC16	Xhariep District Municipality	Yes	District	Yes
FS161	Letsemeng Local Municipality	Yes	Local	Yes
FS162	Kopanong Local Municipality	Yes	Local	Yes
FS163	Mohokare Local Municipality	Yes		No

Service Provision - Local tourism

MDB Code	Municipality Name	Indicated that the municipality performed the function					
		2002	2003	2004	2005	2006	2007
DC16	Xhariep District Municipality	No	Yes	Yes	Yes	Yes	Yes
FS161	Letsemeng Local Municipality	Yes	Yes	No	Yes	Yes	Yes
FS162	Kopanong Local Municipality	No	Yes	No	Yes	Yes	Yes
FS163	Mohokare Local Municipality	No	No	No	No	Yes	No

MDB Code	Municipality Name	Municipality makes use of external service provider	Section 78 complete	Service level agreement in place	Municipality makes use of external service provider	Section 78 complete	Service level agreement in place
		2006	2006	2006	2007	2007	2007
DC16	Xhariep District Municipality					No	No
FS161	Letsemeng Local Municipality		No	No		No	No
FS162	Kopanong Local Municipality		No	No		No	No
FS163	Mohokare Local Municipality						

Budget information – Local tourism

MDB Code	Municipality Name	Operating Budget for function					
		2002/2003	2003/2004	2004/2005	2005/2006	2006/2007	2007/2008
DC16	Xhariep District Municipality		315742	100000	106000	120000	946860
FS161	Letsemeng Local Municipality		5000	0	700000	770000	700000
FS162	Kopanong Local Municipality			0	50000	55000	4401970
FS163	Mohokare Local Municipality			0	0	0	0

MDB Code	Municipality Name	Line item or part allocation				
		2003/2004	2004/2005	2005/2006	2006/2007	2007/2008
DC16	Xhariep District Municipality	Line	Line;	Part;	Part;	Line
FS161	Letsemeng Local Municipality	Part		Part;	Part;	Part
FS162	Kopanong Local Municipality			Part;	Line;	Part
FS163	Mohokare Local Municipality					

MDB Code	Municipality Name	Per capita budget			
		2004/2005	2005/2006	2006/2007	2007/2008
DC16	Xhariep District Municipality	0.74	0.78	0.89	7.00
FS161	Letsemeng Local Municipality		16.29	17.91	16.29
FS162	Kopanong Local Municipality		0.89	0.98	78.69
FS163	Mohokare Local Municipality				

Staffing – Local tourism

MDB Code	Municipality Name	Staff Available for the function					
		2002	2003	2004	2005	2006	2007
DC16	Xhariep District Municipality		1	1	1	1	2
FS161	Letsemeng Local Municipality	1	6	0	2	2	1
FS162	Kopanong Local Municipality			0	1	1	4
FS163	Mohokare Local Municipality	0		0	0	0	0

MDB Code	Municipality Name	Staff per capita ratio				Staff Vacancies		
		2004	2005	2006	2007	2005	2006	2007
DC16	Xhariep District Municipality	135248	135248	135248	67621	2		2
FS161	Letsemeng Local Municipality		21491	21491	42981			
FS162	Kopanong Local Municipality		55945	55945	13985			
FS163	Mohokare Local Municipality							

Equipment – Local tourism

MDB Code	Municipality Name	Equipment available for the function					
		2002	2003	2004	2005	2006	2007
DC16	Xhariep District Municipality	No	Yes	Yes	Yes	Yes	Yes
FS161	Letsemeng Local Municipality	No	No	No	Yes	Yes	Yes

FS162	Kopanong Local Municipality	No	No	No	No	Yes	Yes
FS163	Mohokare Local Municipality	No	No	No	No	No	No

Comments and Recommendations – Local tourism

Comments:

The district municipality and two local municipalities perform the local tourism function (DC16, FS161 and FS162). All municipalities perform the function from a single department and are concerned with the promoting of tourism.

The manager for FS161 has a matric only. The other two managers have degrees. Local government experience ranges from 1 year in FS161 to 4 years in DC16. None of the managers has been in position for more than 4 years.

All three municipalities have budget available for the function. Per capita budgets range from R7 in DC16 to R78.69 in FS162.

There are staff available in each municipality for this function. DC16 has two staff vacancies.

All three municipalities performing this function have equipment available to do so.

In summary:

FS163 is the only municipality that does not have capacity to perform this function.

Recommendation for the adjustment of the function:

No adjustments are recommended by the MDB for the 2007/08 assessment period.

3.7 Municipal airport

Department rendering the service – Municipal airport

MDB Code	Municipality Name	Name of Department Performing function	Only department performing function	Name of other department/s performing the function	Description of function performed by municipality
DC16	Xhariep District Municipality				
FS161	Letsemeng Local Municipality				
FS162	Kopanong Local Municipality				
FS163	Mohokare Local Municipality				

Function Management – Municipal airport

MDB Code	Municipality Name	Qualification	Years of local Government Experience	Current position Section 57/Acting/Other	Years in existing position	If acting – reason provided
DC16	Xhariep District Municipality					
FS161	Letsemeng Local Municipality					
FS162	Kopanong Local Municipality					
FS163	Mohokare Local Municipality					

Authority - Municipal airport

MDB Code	Municipality Name	Authority for the function	Municipality understood authority	
			Authorised as Answered	Understands
DC16	Xhariep District Municipality	Yes		No
FS161	Letsemeng Local Municipality	Yes		No
FS162	Kopanong Local Municipality	Yes		No
FS163	Mohokare Local Municipality	Yes		No

Service Provision - Municipal airport

MDB Code	Municipality Name	Indicated that the municipality performed the function					
		2002	2003	2004	2005	2006	2007
DC16	Xhariep District Municipality	No	No	No	No	No	No
FS161	Letsemeng Local Municipality	No	No	No	No	No	No
FS162	Kopanong Local Municipality	No	No	No	No	No	No
FS163	Mohokare Local Municipality	No	No	No	No	No	No

MDB Code	Municipality Name	Municipality makes use of external service provider	Section 78 complete	Service level agreement in place	Municipality makes use of external service provider	Section 78 complete	Service level agreement in place
		2006	2006	2006	2007	2007	2007
DC16	Xhariep District Municipality						
FS161	Letsemeng Local Municipality						
FS162	Kopanong Local Municipality						
FS163	Mohokare Local Municipality						

Budget information – Municipal airport

MDB Code	Municipality Name	Operating Budget for function					
		2002/2003	2003/2004	2004/2005	2005/2006	2006/2007	2007/2008
DC16	Xhariep District Municipality			0	0	0	0
FS161	Letsemeng Local Municipality			0	0	0	0
FS162	Kopanong Local Municipality			0	0	0	0
FS163	Mohokare Local Municipality			0	0	0	0

MDB Code	Municipality Name	Line item or part allocation				
		2003/2004	2004/2005	2005/2006	2006/2007	2007/2008
DC16	Xhariep District Municipality					
FS161	Letsemeng Local Municipality					
FS162	Kopanong Local Municipality					

FS163	Mohokare Local Municipality					
-------	-----------------------------	--	--	--	--	--

MDB Code	Municipality Name	Per capita budget			
		2004/2005	2005/2006	2006/2007	2007/2008
DC16	Xhariep District Municipality				
FS161	Letsemeng Local Municipality				
FS162	Kopanong Local Municipality				
FS163	Mohokare Local Municipality				

Staffing – Municipal airport

MDB Code	Municipality Name	Staff Available for the function					
		2002	2003	2004	2005	2006	2007
DC16	Xhariep District Municipality			0	0	0	0
FS161	Letsemeng Local Municipality			0	0	0	0
FS162	Kopanong Local Municipality			0	0	0	0
FS163	Mohokare Local Municipality			0	0	0	0

MDB Code	Municipality Name	Staff per capita ratio				Staff Vacancies		
		2004	2005	2006	2007	2005	2006	2007
DC16	Xhariep District Municipality							
FS161	Letsemeng Local Municipality							
FS162	Kopanong Local Municipality							
FS163	Mohokare Local Municipality							

Equipment – Municipal airport

MDB Code	Municipality Name	Equipment available for the function					
		2002	2003	2004	2005	2006	2007
DC16	Xhariep District Municipality	No	No	No	No	No	No
FS161	Letsemeng Local Municipality	No	No	No	No	No	No
FS162	Kopanong Local Municipality	No	No	No	No	No	No
FS163	Mohokare Local Municipality	No	No	No	No	No	No

Comments and Recommendations – Municipal airport

Comments:

This function is not performed by any of the municipalities.

Recommendation for the adjustment of the function:

No adjustments are recommended by the MDB for the 2007/08 assessment period.

3.8 Municipal Planning

Department rendering the service – Municipal Planning

MDB	Municipality Name	Name of	Only	Name of other	Description of function performed by
-----	-------------------	---------	------	---------------	--------------------------------------

Code		Department Performing function	department performing function	department/s performing the function	municipality
DC16	Xhariep District Municipality	IDP and Planning	Yes		Implementation of IDP
FS161	Letsemeng Local Municipality	Technical Services	No	Administration	Integrated planning Spatial Development Rezoning Consolidation
FS162	Kopanong Local Municipality	Office of M M	Yes		Implementation of IDP
FS163	Mohokare Local Municipality	Office of Municipal Manager	No	Local Economic Development	Compile and implement IDP

Function Management – Municipal Planning

MDB Code	Municipality Name	Qualification	Years of local Government Experience	Current position Section 57/Acting/Other	Years in existing position	If acting – reason provided
DC16	Xhariep District Municipality	Doctrate - Public Admiin	17	MSA Sec 57	1	
FS161	Letsemeng Local Municipality	LLB	1	MSA Sec 57		
FS162	Kopanong Local Municipality	Hon B Ed	2	Permanent	1	
FS163	Mohokare Local Municipality	Matric	6	Acting	4	Post to be advertised

Authority - Municipal Planning

MDB Code	Municipality Name	Authority for the function	Municipality understood authority	
			Authorised as Answered	Understands
DC16	Xhariep District Municipality	IDPs	District	No
FS161	Letsemeng Local Municipality	Yes	Local	Yes
FS162	Kopanong Local Municipality	Yes	Local	Yes
FS163	Mohokare Local Municipality	Yes	Local	Yes

Service Provision - Municipal Planning

MDB Code	Municipality Name	Indicated that the municipality performed the function					
		2002	2003	2004	2005	2006	2007
DC16	Xhariep District Municipality	No	Yes	Yes	Yes	Yes	Yes
FS161	Letsemeng Local Municipality	No	Yes	Yes	Yes	No	Yes
FS162	Kopanong Local Municipality	Yes	Yes	Yes	Yes	Yes	Yes
FS163	Mohokare Local Municipality	No	Yes	Yes	No	No	Yes

MDB Code	Municipality Name	Municipality makes use of external service provider	Section 78 complete	Service level agreement in place	Municipality makes use of external service provider	Section 78 complete	Service level agreement in place
DC16	Xhariep District Municipality		No	No		No	No

FS161	Letsemeng Local Municipality	To be appointed	Yes	No		No	No
FS162	Kopanong Local Municipality		No	No		No	No
FS163	Mohokare Local Municipality					No	No

Budget information – Municipal Planning

MDB Code	Municipality Name	Operating Budget for function					
		2002/2003	2003/2004	2004/2005	2005/2006	2006/2007	2007/2008
DC16	Xhariep District Municipality		720000	236250	927681	1030000	946860
FS161	Letsemeng Local Municipality		135000	200000	1297660	1547529	937967
FS162	Kopanong Local Municipality		160923	210855	1235562	1350000	795602
FS163	Mohokare Local Municipality		530000	500000	0	0	1527000

MDB Code	Municipality Name	Line item or part allocation				
		2003/2004	2004/2005	2005/2006	2006/2007	2007/2008
DC16	Xhariep District Municipality	Line	Line;	Line;	Part;	Part
FS161	Letsemeng Local Municipality	Part	Part;	Line;	Line;	Part
FS162	Kopanong Local Municipality	Line	Line;	Line;	Line;	Part
FS163	Mohokare Local Municipality	Part	Part;			Line

MDB Code	Municipality Name	Per capita budget			
		2004/2005	2005/2006	2006/2007	2007/2008
DC16	Xhariep District Municipality	1.75	6.86	7.62	7.00
FS161	Letsemeng Local Municipality	4.65	30.19	36.00	21.82
FS162	Kopanong Local Municipality	3.77	22.09	24.13	14.22
FS163	Mohokare Local Municipality	13.77			42.04

Staffing – Municipal Planning

MDB Code	Municipality Name	Staff Available for the function					
		2002	2003	2004	2005	2006	2007
DC16	Xhariep District Municipality		3	4	3	3	0
FS161	Letsemeng Local Municipality		5	1	2	1	2
FS162	Kopanong Local Municipality		2	1	1	1	1
FS163	Mohokare Local Municipality	0	1	1	0	0	1

MDB Code	Municipality Name	Staff per capita ratio				Staff Vacancies		
		2004	2005	2006	2007	2005	2006	2007
DC16	Xhariep District Municipality	33812	45083	45083		1		2
FS161	Letsemeng Local Municipality	42981	21491	42981	21491			
FS162	Kopanong Local Municipality	55945	55945	55945	55941			2
FS163	Mohokare Local Municipality	36322			36319			2

Equipment – Municipal Planning

MDB Code	Municipality Name	Equipment available for the function					
		2002	2003	2004	2005	2006	2007
DC16	Xhariep District Municipality	No	Yes	Yes	Yes	Yes	Yes
FS161	Letsemeng Local Municipality	No	No	Yes	Yes	Yes	Yes
FS162	Kopanong Local Municipality	No	Yes	Yes	Yes	Yes	Yes
FS163	Mohokare Local Municipality	No	No	Yes	No	No	Yes

Comments and Recommendations – Municipal Planning**Comments:**

Both the district and all three local municipalities perform the municipal planning function. DC16, FS162 and FS163 are primarily concerned with the implementation of the IDP.

The manager for FS163 is the only manager without tertiary qualifications. The remaining three managers have degrees. Local government experience ranges from 1 year in FS161 to 17 years in DC16. The manager in FS163 is in an acting position. None of the managers has been in position for more than 4 years.

All four municipalities have budget available for perform the function although FS163 is the only municipality that shows an increase in budget from the previous financial year. Per capita budgets range from R7 in DC16 to R42.04 in FS163.

DC16 does not have staff available to perform this function although it does have two staff vacancies. All three local municipalities have staff available for the function.

There is equipment available for this function in all municipalities

In summary:

All municipalities have capacity to perform this function.

Recommendation for the adjustment of the function:

No adjustments are recommended by the MDB for the 2007/08 assessment period.

3.9 Municipal Health Services**Department rendering the service – Municipal Health Services**

MDB Code	Municipality Name	Name of Department Performing function	Only department performing function	Name of other department/s performing the function	Description of function performed by municipality
DC16	Xhariep District Municipality				
FS161	Letsemeng Local Municipality				
FS162	Kopanong Local Municipality	Community Services	Yes		Inspection and control of premises Disease control
FS163	Mohokare Local Municipality				

Function Management – Municipal Health Services

MDB Code	Municipality Name	Qualification	Years of local Government Experience	Current position Section 57/Acting/Other	Years in existing position	If acting – reason provided
----------	-------------------	---------------	--------------------------------------	--	----------------------------	-----------------------------

DC16	Xhariep District Municipality					
FS161	Letsemeng Local Municipality					
FS162	Kopanong Local Municipality	Matric Cert Labour Law	6	MSA Sec 57	1	
FS163	Mohokare Local Municipality					

Authority - Municipal Health Services

MDB Code	Municipality Name	Authority for the function	Municipality understood authority	
			Authorised as Answered	Understands
DC16	Xhariep District Municipality	Performs its own function		No
FS161	Letsemeng Local Municipality	No		Yes
FS162	Kopanong Local Municipality	No	Local	No
FS163	Mohokare Local Municipality	No		Yes

Service Provision - Municipal Health Services

MDB Code	Municipality Name	Indicated that the municipality performed the function					
		2002	2003	2004	2005	2006	2007
DC16	Xhariep District Municipality	No	No	No	No	No	No
FS161	Letsemeng Local Municipality	Yes	Yes	No	Yes	Yes	No
FS162	Kopanong Local Municipality	Yes	Yes	No	No	No	Yes
FS163	Mohokare Local Municipality	Yes	Yes	Yes	Yes	Yes	No

MDB Code	Municipality Name	Municipality makes use of external service provider	Section 78 complete	Service level agreement in place	Municipality makes use of external service provider	Section 78 complete	Service level agreement in place
		2006	2006	2006	2007	2007	2007
DC16	Xhariep District Municipality						
FS161	Letsemeng Local Municipality		No	No			
FS162	Kopanong Local Municipality					No	No
FS163	Mohokare Local Municipality		No	No			

Budget information – Municipal Health Services

MDB Code	Municipality Name	Operating Budget for function					
		2002/2003	2003/2004	2004/2005	2005/2006	2006/2007	2007/2008
DC16	Xhariep District Municipality			0	0	0	0
FS161	Letsemeng Local Municipality		4305355	0	226591	221958	0
FS162	Kopanong Local Municipality	4538413	5903565	0	0	0	4401970

FS163	Mohokare Local Municipality	47885	2326925	0	169250.38	240000	0
-------	-----------------------------	-------	---------	---	-----------	--------	---

MDB Code	Municipality Name	Line item or part allocation				
		2003/2004	2004/2005	2005/2006	2006/2007	2007/2008
DC16	Xhariep District Municipality					
FS161	Letsemeng Local Municipality	Line		Line;	Line;	
FS162	Kopanong Local Municipality	Line				Part
FS163	Mohokare Local Municipality	Line		Line;	Part;	

MDB Code	Municipality Name	Per capita budget			
		2004/2005	2005/2006	2006/2007	2007/2008
DC16	Xhariep District Municipality				
FS161	Letsemeng Local Municipality		5.27	5.16	
FS162	Kopanong Local Municipality				78.69
FS163	Mohokare Local Municipality		4.66	6.61	

Staffing – Municipal Health Services

MDB Code	Municipality Name	Staff Available for the function					
		2002	2003	2004	2005	2006	2007
DC16	Xhariep District Municipality			0	0	0	0
FS161	Letsemeng Local Municipality	15	36	0	1	1	0
FS162	Kopanong Local Municipality	49	46	0	0	0	1
FS163	Mohokare Local Municipality	13		0	1	1	0

MDB Code	Municipality Name	Staff per capita ratio				Staff Vacancies		
		2004	2005	2006	2007	2005	2006	2007
DC16	Xhariep District Municipality							
FS161	Letsemeng Local Municipality		42981	42981				
FS162	Kopanong Local Municipality				55941			
FS163	Mohokare Local Municipality		36322	36322		1	2	

Equipment – Municipal Health Services

MDB Code	Municipality Name	Equipment available for the function					
		2002	2003	2004	2005	2006	2007
DC16	Xhariep District Municipality	Yes	No	No	No	No	No
FS161	Letsemeng Local Municipality	Yes	Yes	No	Yes	No	No
FS162	Kopanong Local Municipality	Yes	Yes	No	No	No	Yes
FS163	Mohokare Local Municipality	Yes	Yes	No	Yes	No	No

Comments and Recommendations – Municipal Health Services

Comments:

FS162 is the only municipality that performs the municipal health service function and has described

the function as including 'inspection and control of premises and disease control'.

The manager in charge of this function has a tertiary qualification, 6 years of local government experience and has been in the position for 1 year.

FS162 has budget available for this function, one staff member and equipment.

In summary:

FS162 has capacity to perform this function.

3.10 Municipal public transport

Department rendering the service – Municipal public transport

MDB Code	Municipality Name	Name of Department Performing function	Only department performing function	Name of other department/s performing the function	Description of function performed by municipality
DC16	Xhariep District Municipality				
FS161	Letsemeng Local Municipality				
FS162	Kopanong Local Municipality				
FS163	Mohokare Local Municipality				

Function Management – Municipal public transport

MDB Code	Municipality Name	Qualification	Years of local Government Experience	Current position Section 57/Acting/Other	Years in existing position	If acting – reason provided
DC16	Xhariep District Municipality					
FS161	Letsemeng Local Municipality					
FS162	Kopanong Local Municipality					
FS163	Mohokare Local Municipality					

Authority - Municipal public transport

MDB Code	Municipality Name	Authority for the function	Municipality understood authority	
			Authorised as Answered	Understands
DC16	Xhariep District Municipality	Yes		No
FS161	Letsemeng Local Municipality	Yes		No
FS162	Kopanong Local Municipality	Yes		No
FS163	Mohokare Local Municipality	Yes		No

Service Provision - Municipal public transport

MDB Code	Municipality Name	Indicated that the municipality performed the function

		2002	2003	2004	2005	2006	2007
DC16	Xhariep District Municipality	No	No	No	No	No	No
FS161	Letsemeng Local Municipality	No	No	No	Yes	No	No
FS162	Kopanong Local Municipality	No	No	No	No	No	No
FS163	Mohokare Local Municipality	No	No	No	No	No	No

MDB Code	Municipality Name	Municipality makes use of external service provider	Section 78 complete	Service level agreement in place	Municipality makes use of external service provider	Section 78 complete	Service level agreement in place
		2006	2006	2006	2007	2007	2007
DC16	Xhariep District Municipality						
FS161	Letsemeng Local Municipality						
FS162	Kopanong Local Municipality						
FS163	Mohokare Local Municipality						

Budget information – Municipal public transport

MDB Code	Municipality Name	Operating Budget for function					
		2002/2003	2003/2004	2004/2005	2005/2006	2006/2007	2007/2008
DC16	Xhariep District Municipality			0	0	0	0
FS161	Letsemeng Local Municipality			0	2318054	0	0
FS162	Kopanong Local Municipality			0	0	0	0
FS163	Mohokare Local Municipality			0	0	0	0

MDB Code	Municipality Name	Line item or part allocation				
		2003/2004	2004/2005	2005/2006	2006/2007	2007/2008
DC16	Xhariep District Municipality					
FS161	Letsemeng Local Municipality			Line;		
FS162	Kopanong Local Municipality					
FS163	Mohokare Local Municipality					

MDB Code	Municipality Name	Per capita budget			
		2004/2005	2005/2006	2006/2007	2007/2008
DC16	Xhariep District Municipality				
FS161	Letsemeng Local Municipality		53.93		
FS162	Kopanong Local Municipality				
FS163	Mohokare Local Municipality				

Staffing – Municipal public transport

MDB	Municipality Name	Staff Available for the function

Code		2002	2003	2004	2005	2006	2007
DC16	Xhariep District Municipality			0	0	0	0
FS161	Letsemeng Local Municipality			0	3	0	0
FS162	Kopanong Local Municipality			0	0	0	0
FS163	Mohokare Local Municipality			0	0	0	0

MDB Code	Municipality Name	Staff per capita ratio				Staff Vacancies		
		2004	2005	2006	2007	2005	2006	2007
DC16	Xhariep District Municipality							
FS161	Letsemeng Local Municipality		14327					
FS162	Kopanong Local Municipality							
FS163	Mohokare Local Municipality							

Equipment – Municipal public transport

MDB Code	Municipality Name	Equipment available for the function					
		2002	2003	2004	2005	2006	2007
DC16	Xhariep District Municipality	No	No	No	No	No	No
FS161	Letsemeng Local Municipality	No	No	No	Yes	No	No
FS162	Kopanong Local Municipality	No	No	No	No	No	No
FS163	Mohokare Local Municipality	No	No	No	No	No	No

Comments and Recommendations – Municipal public transport

Comments:

This function is not performed by any of the municipalities.

Recommendation for the adjustment of the function:

No adjustments are recommended by the MDB for the 2007/08 assessment period.

3.11 Pontoons and ferries

Department rendering the service – Pontoons and ferries

MDB Code	Municipality Name	Name of Department Performing function	Only department performing function	Name of other department/s performing the function	Description of function performed by municipality
DC16	Xhariep District Municipality				
FS161	Letsemeng Local Municipality				
FS162	Kopanong Local Municipality				
FS163	Mohokare Local Municipality				

Function Management – Pontoons and ferries

MDB Code	Municipality Name	Qualification	Years of local Government Experience	Current position Section 57/Acting/Other	Years in existing position	If acting – reason provided
DC16	Xhariep District Municipality					
FS161	Letsemeng Local Municipality					
FS162	Kopanong Local Municipality					
FS163	Mohokare Local Municipality					

Authority - Pontoons and ferries

MDB Code	Municipality Name	Authority for the function	Municipality understood authority	
			Authorised as Answered	Understands
DC16	Xhariep District Municipality	-		No
FS161	Letsemeng Local Municipality	Yes		No
FS162	Kopanong Local Municipality	Yes		No
FS163	Mohokare Local Municipality	Yes		No

Service Provision - Pontoons and ferries

MDB Code	Municipality Name	Indicated that the municipality performed the function					
		2002	2003	2004	2005	2006	2007
DC16	Xhariep District Municipality	No	No	No	No	No	No
FS161	Letsemeng Local Municipality	No	No	No	No	No	No
FS162	Kopanong Local Municipality	No	No	No	No	No	No
FS163	Mohokare Local Municipality	No	No	No	No	No	No

MDB Code	Municipality Name	Municipality makes use of external service provider	Section 78 complete	Service level agreement in place	Municipality makes use of external service provider	Section 78 complete	Service level agreement in place
		2006	2006	2006	2007	2007	2007
DC16	Xhariep District Municipality						
FS161	Letsemeng Local Municipality						
FS162	Kopanong Local Municipality						
FS163	Mohokare Local Municipality						

Budget information – Pontoons and ferries

MDB Code	Municipality Name	Operating Budget for function					
		2002/2003	2003/2004	2004/2005	2005/2006	2006/2007	2007/2008
DC16	Xhariep District Municipality			0	0	0	0

FS161	Letsemeng Local Municipality			0	0	0	0
FS162	Kopanong Local Municipality			0	0	0	0
FS163	Mohokare Local Municipality			0	0	0	0

MDB Code	Municipality Name	Line item or part allocation				
		2003/2004	2004/2005	2005/2006	2006/2007	2007/2008
DC16	Xhariep District Municipality					
FS161	Letsemeng Local Municipality					
FS162	Kopanong Local Municipality					
FS163	Mohokare Local Municipality					

MDB Code	Municipality Name	Per capita budget			
		2004/2005	2005/2006	2006/2007	2007/2008
DC16	Xhariep District Municipality				
FS161	Letsemeng Local Municipality				
FS162	Kopanong Local Municipality				
FS163	Mohokare Local Municipality				

Staffing – Pontoons and ferries

MDB Code	Municipality Name	Staff Available for the function					
		2002	2003	2004	2005	2006	2007
DC16	Xhariep District Municipality			0	0	0	0
FS161	Letsemeng Local Municipality			0	0	0	0
FS162	Kopanong Local Municipality			0	0	0	0
FS163	Mohokare Local Municipality			0	0	0	0

MDB Code	Municipality Name	Staff per capita ratio				Staff Vacancies		
		2004	2005	2006	2007	2005	2006	2007
DC16	Xhariep District Municipality							
FS161	Letsemeng Local Municipality							
FS162	Kopanong Local Municipality							
FS163	Mohokare Local Municipality							

Equipment – Pontoons and ferries

MDB Code	Municipality Name	Equipment available for the function					
		2002	2003	2004	2005	2006	2007
DC16	Xhariep District Municipality	No	No	No	No	No	No
FS161	Letsemeng Local Municipality	No	No	No	No	No	No
FS162	Kopanong Local Municipality	No	No	No	No	No	No
FS163	Mohokare Local Municipality	No	No	No	No	No	No

Comments and Recommendations – Pontoons and ferries**Comments:**

This function is not performed by any of the municipalities.

Recommendation for the adjustment of the function:

No adjustments are recommended by the MDB for the 2007/08 assessment period.

3.12 Storm water**Department rendering the service – Storm water**

MDB Code	Municipality Name	Name of Department Performing function	Only department performing function	Name of other department/s performing the function	Description of function performed by municipality
DC16	Xhariep District Municipality				
FS161	Letsemeng Local Municipality	Technical Services	Yes		Management and building stormwater
FS162	Kopanong Local Municipality	Community Services	Yes		Maintenance of drainage system
FS163	Mohokare Local Municipality	Infrastructure Services	Yes		Maintenance and upgrading of stormwater drainage systems

Function Management – Storm water

MDB Code	Municipality Name	Qualification	Years of local Government Experience	Current position Section 57/Acting/Other	Years in existing position	If acting – reason provided
DC16	Xhariep District Municipality					
FS161	Letsemeng Local Municipality	BSc	1	MSA Sec 57	1	
FS162	Kopanong Local Municipality	Cert Labour Law	2	MSA Sec 57	1	
FS163	Mohokare Local Municipality	Matric	5	Acting	5	Post to be advertised

Authority - Storm water

MDB Code	Municipality Name	Authority for the function	Municipality understood authority	
			Authorised as Answered	Understands
DC16	Xhariep District Municipality	-		No
FS161	Letsemeng Local Municipality	Yes	Local	Yes
FS162	Kopanong Local Municipality	Yes	Local	Yes
FS163	Mohokare Local Municipality	Yes	Local	Yes

Service Provision - Storm water

MDB Code	Municipality Name	Indicated that the municipality performed the function					
		2002	2003	2004	2005	2006	2007
DC16	Xhariep District Municipality	No	No	No	No	No	No
FS161	Letsemeng Local Municipality	No	Yes	Yes	Yes	Yes	Yes

FS162	Kopanong Local Municipality	Yes	Yes	Yes	Yes	Yes	Yes
FS163	Mohokare Local Municipality	Yes	Yes	Yes	Yes	Yes	Yes

MDB Code	Municipality Name	Municipality makes use of external service provider	Section 78 complete	Service level agreement in place	Municipality makes use of external service provider	Section 78 complete	Service level agreement in place
		2006	2006	2006	2007	2007	2007
DC16	Xhariep District Municipality						
FS161	Letsemeng Local Municipality		No	No		No	No
FS162	Kopanong Local Municipality		No	No		No	No
FS163	Mohokare Local Municipality		No	No		No	No

Budget information – Storm water

MDB Code	Municipality Name	Operating Budget for function					
		2002/2003	2003/2004	2004/2005	2005/2006	2006/2007	2007/2008
DC16	Xhariep District Municipality			0	0	0	0
FS161	Letsemeng Local Municipality		587790	720000	250000	7502390	300000
FS162	Kopanong Local Municipality	3794896	377695	461419	300000	330000	4401970
FS163	Mohokare Local Municipality		4092490	30000	245000	4789688	500000

MDB Code	Municipality Name	Line item or part allocation				
		2003/2004	2004/2005	2005/2006	2006/2007	2007/2008
DC16	Xhariep District Municipality					
FS161	Letsemeng Local Municipality	Part	Part;	Part;	Line;	Part
FS162	Kopanong Local Municipality	Line	Line;	Line;	Line;	Part
FS163	Mohokare Local Municipality	Part	Part;	Line;	Line;	Line

MDB Code	Municipality Name	Per capita budget			
		2004/2005	2005/2006	2006/2007	2007/2008
DC16	Xhariep District Municipality				
FS161	Letsemeng Local Municipality	16.75	5.82	174.55	6.98
FS162	Kopanong Local Municipality	8.25	5.36	5.90	78.69
FS163	Mohokare Local Municipality	0.83	6.75	131.87	13.77

Staffing – Storm water

MDB Code	Municipality Name	Staff Available for the function					
		2002	2003	2004	2005	2006	2007
DC16	Xhariep District Municipality			0	0	0	0
FS161	Letsemeng Local Municipality		10	10	5	4	10

FS162	Kopanong Local Municipality	49	9	8	10	10	45
FS163	Mohokare Local Municipality	5	18	5	6	30	8

MDB Code	Municipality Name	Staff per capita ratio				Staff Vacancies		
		2004	2005	2006	2007	2005	2006	2007
DC16	Xhariep District Municipality							
FS161	Letsemeng Local Municipality	4298	8596	10745	4298			
FS162	Kopanong Local Municipality	6993	5595	5595	1243			
FS163	Mohokare Local Municipality	7264	6054	1211	4540	9		10

Equipment – Storm water

MDB Code	Municipality Name	Equipment available for the function					
		2002	2003	2004	2005	2006	2007
DC16	Xhariep District Municipality	No	No	No	No	No	No
FS161	Letsemeng Local Municipality	No	Yes	Yes	Yes	Yes	Yes
FS162	Kopanong Local Municipality	Yes	Yes	Yes	Yes	Yes	Yes
FS163	Mohokare Local Municipality	Yes	Yes	Yes	Yes	Yes	Yes

Comments and Recommendations – Storm water

Comments:

The three local municipalities each perform the storm water function from a single department and all municipalities seem to render the correct aspects of the function.

The manager for FS163 has a matric only and is in an acting position. The remaining managers have tertiary qualifications. Local government experience ranges from 1 year in FS161 to 5 years in FS163. The managers for FS161 and FS162 are MSA Section 57 appointments and have both been in position for one year.

All three local municipalities have budget available for this function although only FS162 has had an increase since the previous financial year. Per capita budgets range from R6.98 in FS161 to R78.69 in FS162.

Staff are available for this function in all three local municipalities. FS163 has had a significant decrease in staff since 2006 and has 10 staff vacancies.

There is equipment available for the function in the local municipalities.

In summary:

The local municipalities have capacity to perform this function.

Recommendation for the adjustment of the function:

No adjustments are recommended by the MDB for the 2007/08 assessment period.

3.13 Trading regulations

Department rendering the service – Trading regulations

MDB Code	Municipality Name	Name of Department Performing function	Only department performing function	Name of other department/s performing the function	Description of function performed by municipality
DC16	Xhariep District				

	Municipality				
FS161	Letsemeng Local Municipality	Technical Services	Yes	Administration	Regulates
FS162	Kopanong Local Municipality				
FS163	Mohokare Local Municipality	Community Services	Yes		Approval of business licences

Function Management – Trading regulations

MDB Code	Municipality Name	Qualification	Years of local Government Experience	Current position Section 57/Acting/Other	Years in existing position	If acting – reason provided
DC16	Xhariep District Municipality					
FS161	Letsemeng Local Municipality	Health and Environmental Diploma	11	Permanent	11	
FS162	Kopanong Local Municipality					
FS163	Mohokare Local Municipality	Diploma - Civil Eng	2	Acting		Post to be advertised

Authority - Trading regulations

MDB Code	Municipality Name	Authority for the function	Municipality understood authority	
			Authorised as Answered	Understands
DC16	Xhariep District Municipality	-		No
FS161	Letsemeng Local Municipality	Yes	Local	Yes
FS162	Kopanong Local Municipality	Yes		No
FS163	Mohokare Local Municipality	Yes	Local	Yes

Service Provision - Trading regulations

MDB Code	Municipality Name	Indicated that the municipality performed the function					
		2002	2003	2004	2005	2006	2007
DC16	Xhariep District Municipality	No	No	No	No	No	No
FS161	Letsemeng Local Municipality	No	Yes	No	Yes	No	Yes
FS162	Kopanong Local Municipality	No	No	No	No	No	No
FS163	Mohokare Local Municipality	No	Yes	No	Yes	Yes	Yes

MDB Code	Municipality Name	Municipality makes use of external service provider	Section 78 complete	Service level agreement in place	Municipality makes use of external service provider	Section 78 complete	Service level agreement in place
		2006	2006	2006	2007	2007	2007
DC16	Xhariep District Municipality						
FS161	Letsemeng Local Municipality					Yes	No
FS162	Kopanong Local Municipality						

FS163	Mohokare Local Municipality		No	No		No	No
-------	-----------------------------	--	----	----	--	----	----

Budget information – Trading regulations

MDB Code	Municipality Name	Operating Budget for function					
		2002/2003	2003/2004	2004/2005	2005/2006	2006/2007	2007/2008
DC16	Xhariep District Municipality			0	0	0	0
FS161	Letsemeng Local Municipality		104000	0	7000	0	700000
FS162	Kopanong Local Municipality			0	0	0	0
FS163	Mohokare Local Municipality		30000	0	0	3500	40153031

MDB Code	Municipality Name	Line item or part allocation				
		2003/2004	2004/2005	2005/2006	2006/2007	2007/2008
DC16	Xhariep District Municipality					
FS161	Letsemeng Local Municipality	Part		Part;		Part
FS162	Kopanong Local Municipality					
FS163	Mohokare Local Municipality	Part			Part;	Part

MDB Code	Municipality Name	Per capita budget			
		2004/2005	2005/2006	2006/2007	2007/2008
DC16	Xhariep District Municipality				
FS161	Letsemeng Local Municipality		0.16		16.29
FS162	Kopanong Local Municipality				
FS163	Mohokare Local Municipality			0.10	1105.57

Staffing – Trading regulations

MDB Code	Municipality Name	Staff Available for the function					
		2002	2003	2004	2005	2006	2007
DC16	Xhariep District Municipality			0	0	0	0
FS161	Letsemeng Local Municipality		1	0	2	0	1
FS162	Kopanong Local Municipality			0	0	0	0
FS163	Mohokare Local Municipality		1	0	1	2	1

MDB Code	Municipality Name	Staff per capita ratio				Staff Vacancies		
		2004	2005	2006	2007	2005	2006	2007
DC16	Xhariep District Municipality							
FS161	Letsemeng Local Municipality		21491		42981			
FS162	Kopanong Local Municipality							
FS163	Mohokare Local Municipality		36322	18161	36319		2	1

Equipment – Trading regulations

MDB Code	Municipality Name	Equipment available for the function					
		2002	2003	2004	2005	2006	2007
DC16	Xhariep District Municipality	No	No	No	No	No	No
FS161	Letsemeng Local Municipality	No	Yes	No	Yes	No	No
FS162	Kopanong Local Municipality	No	No	No	No	No	No
FS163	Mohokare Local Municipality	No	No	No	No	No	Yes

Comments and Recommendations – Trading regulations

Comments:

FS161 and FS163 perform the trading regulations function from single departments. Both municipalities seem to render relevant aspects of the function.

Both managers have tertiary qualifications. Local government experience ranges from 2 years in FS163 to 11 years in FS161. The manager in FS163 is in an acting position while the manager for FS161 has been in position for 11 years.

Both local municipalities have budget available for the function and both show an increase since the previous financial year. Per capita budgets range from R16.29 in FS161 to R1105.57 in FS163.

Each municipality performing the function has one staff member available to do so, while FS163 also has one staff vacancy.

Only FS163 has equipment available for the function.

In summary:

FS161 and FS163 have capacity to perform this function.

Recommendation for the adjustment of the function:

No adjustments are recommended by the MDB for the 2007/08 assessment period.

3.14 Water (Potable)

Department rendering the service – Water (Potable)

MDB Code	Municipality Name	Name of Department Performing function	Only department performing function	Name of other department/s performing the function	Description of function performed by municipality
DC16	Xhariep District Municipality	Technical and Community Services	Yes		
FS161	Letsemeng Local Municipality	Technical Services	Yes		Provision Reticulation of metered standpipes Maintenance
FS162	Kopanong Local Municipality	Community Services	Yes		Water supply to households Maintenance of water network
FS163	Mohokare Local Municipality	Infrastructure Services	Yes		Water supply Purification works

Function Management – Water (Potable)

MDB Code	Municipality Name	Qualification	Years of local Government Experience	Current position Section 57/Acting/Other	Years in existing position	If acting – reason provided
DC16	Xhariep District Municipality			Other		
FS161	Letsemeng Local Municipality	BSc	1	MSA Sec 57	1	

FS162	Kopanong Local Municipality	Cert - Labour Law	2	MSA Sec 57	1	
FS163	Mohokare Local Municipality	Matric	5	Acting	5	Post to be advertised

Authority - Water (Potable)

MDB Code	Municipality Name	Authority for the function	Municipality understood authority	
			Authorised as Answered	Understands
DC16	Xhariep District Municipality	No	District	No
FS161	Letsemeng Local Municipality	Yes	Local	Yes
FS162	Kopanong Local Municipality	Yes	Local	Yes
FS163	Mohokare Local Municipality	Yes	Local	Yes

Service Provision - Water (Potable)

MDB Code	Municipality Name	Indicated that the municipality performed the function					
		2002	2003	2004	2005	2006	2007
DC16	Xhariep District Municipality	No	No	No	No	No	Yes
FS161	Letsemeng Local Municipality	Yes	Yes	Yes	Yes	Yes	Yes
FS162	Kopanong Local Municipality	Yes	Yes	Yes	Yes	Yes	Yes
FS163	Mohokare Local Municipality	Yes	Yes	Yes	Yes	Yes	Yes

MDB Code	Municipality Name	Municipality makes use of external service provider	Section 78 complete	Service level agreement in place	Municipality makes use of external service provider	Section 78 complete	Service level agreement in place
		2006	2006	2006	2007	2007	2007
DC16	Xhariep District Municipality					No	No
FS161	Letsemeng Local Municipality		No	No		No	No
FS162	Kopanong Local Municipality		No	No		No	No
FS163	Mohokare Local Municipality		No	No		No	No

Budget information – Water (Potable)

MDB Code	Municipality Name	Operating Budget for function					
		2002/2003	2003/2004	2004/2005	2005/2006	2006/2007	2007/2008
DC16	Xhariep District Municipality			0	0	0	0
FS161	Letsemeng Local Municipality	4915298	5947474	6615000	4857832	6286163	8265539
FS162	Kopanong Local Municipality	7540112	12077482	10944368	8957519	12972649	11265535
FS163	Mohokare Local Municipality	1938612	2994826	2687155	1411400	5141276	7448864

MDB Code	Municipality Name	Line item or part allocation				
		2003/2004	2004/2005	2005/2006	2006/2007	2007/2008
DC16	Xhariep District Municipality					
FS161	Letsemeng Local Municipality	Line	Line;	Line;	Line;	Line
FS162	Kopanong Local Municipality	Line	Line;	Line;	Line;	Line
FS163	Mohokare Local Municipality	Line	Line;	Line;	Line;	Line

MDB Code	Municipality Name	Per capita budget			
		2004/2005	2005/2006	2006/2007	2007/2008
DC16	Xhariep District Municipality				
FS161	Letsemeng Local Municipality	153.91	113.02	146.25	192.31
FS162	Kopanong Local Municipality	195.63	160.11	231.88	201.38
FS163	Mohokare Local Municipality	73.98	38.86	141.55	205.10

Income information – Water (Potable)

MDB Code	Operating Income		Function Income as a % of Operation Income	
	Actual 2006/2007	Estimated 2007/2008	2006/2007	2007/2008
DC16		0		0.00%
FS161	8142844	8265539	22.21%	18.44%
FS162	21935533	11265535	28.45%	12.49%
FS163	5992345	7448864	14.93%	18.55%

Staffing – Water (Potable)

MDB Code	Municipality Name	Staff Available for the function					
		2002	2003	2004	2005	2006	2007
DC16	Xhariep District Municipality			0	0	0	1
FS161	Letsemeng Local Municipality		30	10	15	17	20
FS162	Kopanong Local Municipality	39	40	50	30	30	45
FS163	Mohokare Local Municipality	22	30	47	26	36	30

MDB Code	Municipality Name	Staff per capita ratio				Staff Vacancies		
		2004	2005	2006	2007	2005	2006	2007
DC16	Xhariep District Municipality				135241			
FS161	Letsemeng Local Municipality	4298	2865	2528	2149		8	
FS162	Kopanong Local Municipality	1119	1865	1865	1243	3		
FS163	Mohokare Local Municipality	773	1397	1009	1211	6	2	5

Equipment – Water (Potable)

MDB Code	Municipality Name	Equipment available for the function					
		2002	2003	2004	2005	2006	2007
DC16	Xhariep District Municipality	Yes	No	No	No	No	Yes

FS161	Letsemeng Local Municipality	Yes	Yes	Yes	Yes	Yes	Yes
FS162	Kopanong Local Municipality	Yes	Yes	Yes	Yes	Yes	Yes
FS163	Mohokare Local Municipality	Yes	Yes	Yes	Yes	Yes	Yes

Comments and Recommendations – Water (Potable)

Comments:

The district municipality and all three local municipalities perform this function from a single department. All local municipalities render the provision of water supply.

DC16 did not provide information on the manager responsible for the function. The manager for FS163 has a matric only and is in an acting position while the other two managers have tertiary qualifications. Local government experience ranges from 1 year in FS161 to 5 years in FS163. The managers in FS161 and FS162 have each been in position for 1 year only.

All three local municipalities have budget available for this function. FS162 was the only municipality to have a decrease in budget available since the previous financial year. Per capita budgets range from R192.31 in FS161 to R205.10 in FS163. The function contributes to almost 19% of operating income in FS163 and just 12.49% of income in FS162.

DC16 only has one staff member available for the function while the other municipalities have staff available. FS162 has the most staff available (45) while FS161 has the least (20). There are five staff vacancies in FS163.

All four municipalities have equipment available for the function,

In summary:

The municipalities have capacity to perform this function.

3.15 Sanitation

Department rendering the service – Sanitation

MDB Code	Municipality Name	Name of Department Performing function	Only department performing function	Name of other department/s performing the function	Description of function performed by municipality
DC16	Xhariep District Municipality				
FS161	Letsemeng Local Municipality	Technical Services	Yes		Provision of reticulation Maintenance and removal of human excreta
FS162	Kopanong Local Municipality	Community Services	Yes		Maintenance of waste water network
FS163	Mohokare Local Municipality	Infrastructure Services	Yes		Maintenance and upgrading of waste water systems

Function Management – Sanitation

MDB Code	Municipality Name	Qualification	Years of local Government Experience	Current position Section 57/Acting/Other	Years in existing position	If acting – reason provided
DC16	Xhariep District Municipality					
FS161	Letsemeng Local Municipality	BSc	1	MSA Sec 57	1	
FS162	Kopanong Local Municipality	Cert - Labour Law	2	MSA Sec 57	1	
FS163	Mohokare Local Municipality	Matric	5	Acting	5	To be advertised

Authority - Sanitation

MDB Code	Municipality Name	Authority for the function	Municipality understood authority	
			Authorised as Answered	Understands
DC16	Xhariep District Municipality	No		No
FS161	Letsemeng Local Municipality	Yes	Local	Yes
FS162	Kopanong Local Municipality	Yes	Local	Yes
FS163	Mohokare Local Municipality	Yes	Local	Yes

Service Provision - Sanitation

MDB Code	Municipality Name	Indicated that the municipality performed the function					
		2002	2003	2004	2005	2006	2007
DC16	Xhariep District Municipality	No	No	No	No	No	No
FS161	Letsemeng Local Municipality	Yes	Yes	Yes	Yes	Yes	Yes
FS162	Kopanong Local Municipality	Yes	Yes	Yes	Yes	Yes	Yes
FS163	Mohokare Local Municipality	Yes	Yes	Yes	Yes	Yes	Yes

MDB Code	Municipality Name	Municipality makes use of external service provider	Section 78 complete	Service level agreement in place	Municipality makes use of external service provider	Section 78 complete	Service level agreement in place
		2006	2006	2006	2007	2007	2007
DC16	Xhariep District Municipality						
FS161	Letsemeng Local Municipality		No	No		No	No
FS162	Kopanong Local Municipality		No	No		No	No
FS163	Mohokare Local Municipality		No	No		No	No

Budget information – Sanitation

MDB Code	Municipality Name	Operating Budget for function					
		2002/2003	2003/2004	2004/2005	2005/2006	2006/2007	2007/2008
DC16	Xhariep District Municipality			0	0	0	0
FS161	Letsemeng Local Municipality	2789393	3343732	3502000	4413400	4339289	5088116
FS162	Kopanong Local Municipality	7204091	7199744	5371073	8741228	6546907	8048309
FS163	Mohokare Local Municipality	385599	2505631	1788975	3433581	3165109	3762488

MDB Code	Municipality Name	Line item or part allocation				
		2003/2004	2004/2005	2005/2006	2006/2007	2007/2008

DC16	Xhariep District Municipality					
FS161	Letsemeng Local Municipality	Line	Line;	Line;	Line;	Line
FS162	Kopanong Local Municipality	Line	Line;	Line;	Line;	Line
FS163	Mohokare Local Municipality	Line	Line;	Line;	Line;	Line

MDB Code	Municipality Name	Per capita budget			
		2004/2005	2005/2006	2006/2007	2007/2008
DC16	Xhariep District Municipality				
FS161	Letsemeng Local Municipality	81.48	102.68	100.96	118.38
FS162	Kopanong Local Municipality	96.01	156.25	117.02	143.87
FS163	Mohokare Local Municipality	49.25	94.53	87.14	103.60

Income information – Sanitation

MDB Code	Operating Income		Function Income as a % of Operation Income	
	Actual 2006/2007	Estimated 2007/2008	2006/2007	2007/2008
DC16		0		0.00%
FS161	6443430	5088116	17.57%	11.35%
FS162	10837542	8048309	14.06%	8.92%
FS163	3501700	3762488	8.72%	9.37%

Staffing – Sanitation

MDB Code	Municipality Name	Staff Available for the function					
		2002	2003	2004	2005	2006	2007
DC16	Xhariep District Municipality			0	0	0	0
FS161	Letsemeng Local Municipality		15	10	13	9	25
FS162	Kopanong Local Municipality	58	56	50	50	50	45
FS163	Mohokare Local Municipality		42	47	30	43	36

MDB Code	Municipality Name	Staff per capita ratio				Staff Vacancies		
		2004	2005	2006	2007	2005	2006	2007
DC16	Xhariep District Municipality							
FS161	Letsemeng Local Municipality	4298	3306	4776	1719		4	
FS162	Kopanong Local Municipality	1119	1119	1119	1243			
FS163	Mohokare Local Municipality	773	1211	845	1009	10	6	

Equipment – Sanitation

MDB Code	Municipality Name	Equipment available for the function					
		2002	2003	2004	2005	2006	2007
DC16	Xhariep District Municipality	Yes	No	No	No	No	No
FS161	Letsemeng Local Municipality	Yes	Yes	Yes	Yes	Yes	Yes
FS162	Kopanong Local Municipality	Yes	Yes	Yes	Yes	Yes	Yes
FS163	Mohokare Local Municipality	Yes	Yes	Yes	Yes	Yes	Yes

Comments and Recommendations – Sanitation

Comments:

All three local municipalities render the sanitation function from a single department. In addition, they have all indicated maintenance as one of the key aspects of the function.

The manager for FS163 has a matric only and is in an acting position while the other two managers have tertiary qualifications. Local government experience ranges from 1 year in FS161 to 5 years in FS163. The managers in FS161 and FS162 have each been in position for 1 year only.

All three local municipalities have budget available for this function. All local municipalities had an increase in budget available since the previous financial year. Per capita budgets range from R103.60 in FS163 to R143.87 in FS162. The function contributes to just over 11% of operating income in FS161 and just 8.92% of income in FS162.

All three local municipalities have staff available for the function. FS162 has the most staff available (45) while FS161 has the least (25). There are no staff vacancies.

All three local municipalities have equipment available for the function,

In summary:

The local municipalities have capacity to perform this function.

3.16 Beaches and Amusement facilities

Department rendering the service – Beaches and Amusement facilities

MDB Code	Municipality Name	Name of Department Performing function	Only department performing function	Name of other department/s performing the function	Description of function performed by municipality
DC16	Xhariep District Municipality				
FS161	Letsemeng Local Municipality				
FS162	Kopanong Local Municipality				
FS163	Mohokare Local Municipality				

Function Management – Beaches and Amusement facilities

MDB Code	Municipality Name	Qualification	Years of local Government Experience	Current position Section 57/Acting/Other	Years in existing position	If acting – reason provided
DC16	Xhariep District Municipality					
FS161	Letsemeng Local Municipality					
FS162	Kopanong Local Municipality					
FS163	Mohokare Local Municipality					

Authority - Beaches and Amusement facilities

MDB Code	Municipality Name	Authority for the function	Municipality understood authority	
			Authorised as Answered	Understands
DC16	Xhariep District Municipality	-		No
FS161	Letsemeng Local Municipality	Yes		No
FS162	Kopanong Local Municipality	Yes		No
FS163	Mohokare Local Municipality	Yes		No

Service Provision - Beaches and Amusement facilities

MDB Code	Municipality Name	Indicated that the municipality performed the function					
		2002	2003	2004	2005	2006	2007
DC16	Xhariep District Municipality	No	No	No	No	No	No
FS161	Letsemeng Local Municipality	No	No	No	No	No	No
FS162	Kopanong Local Municipality	No	No	No	No	No	No
FS163	Mohokare Local Municipality	No	No	No	No	No	No

MDB Code	Municipality Name	Municipality makes use of external service provider	Section 78 complete	Service level agreement in place	Municipality makes use of external service provider	Section 78 complete	Service level agreement in place
		2006	2006	2006	2007	2007	2007
DC16	Xhariep District Municipality						
FS161	Letsemeng Local Municipality						
FS162	Kopanong Local Municipality						
FS163	Mohokare Local Municipality						

Budget information – Beaches and Amusement facilities

MDB Code	Municipality Name	Operating Budget for function					
		2002/2003	2003/2004	2004/2005	2005/2006	2006/2007	2007/2008
DC16	Xhariep District Municipality			0	0	0	0
FS161	Letsemeng Local Municipality			0	0	0	0
FS162	Kopanong Local Municipality			0	0	0	0
FS163	Mohokare Local Municipality			0	0	0	0

MDB Code	Municipality Name	Line item or part allocation				
		2003/2004	2004/2005	2005/2006	2006/2007	2007/2008
DC16	Xhariep District Municipality					
FS161	Letsemeng Local Municipality					
FS162	Kopanong Local Municipality					

FS163	Mohokare Local Municipality					
-------	-----------------------------	--	--	--	--	--

MDB Code	Municipality Name	Per capita budget			
		2004/2005	2005/2006	2006/2007	2007/2008
DC16	Xhariep District Municipality				
FS161	Letsemeng Local Municipality				
FS162	Kopanong Local Municipality				
FS163	Mohokare Local Municipality				

Staffing – Beaches and Amusement facilities

MDB Code	Municipality Name	Staff Available for the function					
		2002	2003	2004	2005	2006	2007
DC16	Xhariep District Municipality			0	0	0	0
FS161	Letsemeng Local Municipality			0	0	0	0
FS162	Kopanong Local Municipality			0	0	0	0
FS163	Mohokare Local Municipality			0	0	0	0

MDB Code	Municipality Name	Staff per capita ratio				Staff Vacancies		
		2004	2005	2006	2007	2005	2006	2007
DC16	Xhariep District Municipality							
FS161	Letsemeng Local Municipality							
FS162	Kopanong Local Municipality							
FS163	Mohokare Local Municipality							

Equipment – Beaches and Amusement facilities

MDB Code	Municipality Name	Equipment available for the function					
		2002	2003	2004	2005	2006	2007
DC16	Xhariep District Municipality	No	No	No	No	No	No
FS161	Letsemeng Local Municipality	No	No	No	No	No	No
FS162	Kopanong Local Municipality	No	No	No	No	No	No
FS163	Mohokare Local Municipality	No	No	No	No	No	No

Comments and Recommendations – Beaches and Amusement facilities

Comments:

This function is not performed by any of the municipalities.

Recommendation for the adjustment of the function:

No adjustments are recommended by the MDB for the 2007/08 assessment period.

3.17 Billboards and the display of advertisements in public places

Department rendering the service – Billboards and the display of advertisements in public places

MDB Code	Municipality Name	Name of Department Performing function	Only department performing function	Name of other department/s performing the function	Description of function performed by municipality
DC16	Xhariep District Municipality				
FS161	Letsemeng Local Municipality	Administration	Yes		Regulation and control billboards and display of advertisements
FS162	Kopanong Local Municipality	Technical Services	Yes		Inspection and application for erection of billboards
FS163	Mohokare Local Municipality				

Function Management – Billboards and the display of advertisements in public places

MDB Code	Municipality Name	Qualification	Years of local Government Experience	Current position Section 57/Acting/Other	Years in existing position	If acting – reason provided
DC16	Xhariep District Municipality					
FS161	Letsemeng Local Municipality	LLB	1	MSA Sec 57		
FS162	Kopanong Local Municipality	National Diploma Law	8	MSA Sec 57	5	
FS163	Mohokare Local Municipality					

Authority - Billboards and the display of advertisements in public places

MDB Code	Municipality Name	Authority for the function	Municipality understood authority	
			Authorised as Answered	Understands
DC16	Xhariep District Municipality	-		No
FS161	Letsemeng Local Municipality	Yes	Local	Yes
FS162	Kopanong Local Municipality	Yes	Local	Yes
FS163	Mohokare Local Municipality	Yes		No

Service Provision - Billboards and the display of advertisements in public places

MDB Code	Municipality Name	Indicated that the municipality performed the function					
		2002	2003	2004	2005	2006	2007
DC16	Xhariep District Municipality	No	No	No	No	No	No
FS161	Letsemeng Local Municipality	No	Yes	No	Yes	No	Yes
FS162	Kopanong Local Municipality	No	No	No	No	No	Yes
FS163	Mohokare Local Municipality	No	No	No	No	No	No

MDB Code	Municipality Name	Municipality makes use of external service provider	Section 78 complete	Service level agreement in place	Municipality makes use of external service provider	Section 78 complete	Service level agreement in place

		2006	2006	2006	2007	2007	2007
DC16	Xhariep District Municipality						
FS161	Letsemeng Local Municipality					No	No
FS162	Kopanong Local Municipality					No	No
FS163	Mohokare Local Municipality						

Budget information – Billboards and the display of advertisements in public places

MDB Code	Municipality Name	Operating Budget for function					
		2002/2003	2003/2004	2004/2005	2005/2006	2006/2007	2007/2008
DC16	Xhariep District Municipality			0	0	0	0
FS161	Letsemeng Local Municipality		10400	0	700000	0	0
FS162	Kopanong Local Municipality			0	0	0	4401970
FS163	Mohokare Local Municipality			0	0	0	0

MDB Code	Municipality Name	Line item or part allocation				
		2003/2004	2004/2005	2005/2006	2006/2007	2007/2008
DC16	Xhariep District Municipality					
FS161	Letsemeng Local Municipality	Part		Part:		
FS162	Kopanong Local Municipality					Part
FS163	Mohokare Local Municipality					

MDB Code	Municipality Name	Per capita budget			
		2004/2005	2005/2006	2006/2007	2007/2008
DC16	Xhariep District Municipality				
FS161	Letsemeng Local Municipality		16.29		
FS162	Kopanong Local Municipality				78.69
FS163	Mohokare Local Municipality				

Staffing – Billboards and the display of advertisements in public places

MDB Code	Municipality Name	Staff Available for the function					
		2002	2003	2004	2005	2006	2007
DC16	Xhariep District Municipality			0	0	0	0
FS161	Letsemeng Local Municipality		1	0	0	0	1
FS162	Kopanong Local Municipality			0	0	0	1
FS163	Mohokare Local Municipality			0	0	0	0

MDB Code	Municipality Name	Staff per capita ratio				Staff Vacancies		
		2004	2005	2006	2007	2005	2006	2007

DC16	Xhariep District Municipality						
FS161	Letsemeng Local Municipality				42981		
FS162	Kopanong Local Municipality				55941		
FS163	Mohokare Local Municipality						

Equipment – Billboards and the display of advertisements in public places

MDB Code	Municipality Name	Equipment available for the function					
		2002	2003	2004	2005	2006	2007
DC16	Xhariep District Municipality	No	No	No	No	No	No
FS161	Letsemeng Local Municipality	No	No	No	Yes	No	Yes
FS162	Kopanong Local Municipality	No	No	No	No	No	Yes
FS163	Mohokare Local Municipality	No	No	No	No	No	No

Comments and Recommendations – Billboards and the display of advertisements in public places

Comments:

Two local municipalities perform the billboard function (FS161 and FS162) and both municipalities seem to render the correct aspects of the function.

The two managers have tertiary qualifications and are MSA Section 57 appointments. Local government experience ranges from 1 year in FS161 to 8 years in FS162. The manager in FS162 has been in position for five years.

FS162 has budget for the function which is an increase from the previous financial year when there was no budget available. Per capita budget is R78.69.

Each municipality performing the function has one staff member available to do so. There are no staff vacancies.

Both municipalities have equipment available for the function.

In summary:

FS161 and FS162 have capacity to perform this function.

Recommendation for the adjustment of the function:

No adjustments are recommended by the MDB for the 2007/08 assessment period.

3.18 Cemeteries, funeral parlours and crematoria

Department rendering the service – Cemeteries, funeral parlours and crematoria

MDB Code	Municipality Name	Name of Department Performing function	Only department performing function	Name of other department/s performing the function	Description of function performed by municipality
DC16	Xhariep District Municipality	Led and Tourism	Yes		Inspection of Crematoria
FS161	Letsemeng Local Municipality	Technical Services		Administration	Establishment Control the disposal
FS162	Kopanong Local Municipality	Community Services	Yes		Control usage of cemeteries
FS163	Mohokare Local Municipality	Community Services	Yes		Prepare graves Maintenance and control of cemeteries

Function Management – Cemeteries, funeral parlours and crematoria

MDB Code	Municipality Name	Qualification	Years of local Government Experience	Current position Section 57/Acting/Other	Years in existing position	If acting – reason provided
DC16	Xhariep District Municipality	BA- Public Admin		Other	1	Seconded from Provisional Office
FS161	Letsemeng Local Municipality	BSc	1	MSA Sec 57	1	
FS162	Kopanong Local Municipality	Cert Labour Law	2	MSA Sec 57	1	
FS163	Mohokare Local Municipality	Diploma - Civil Eng	2	Acting	2	Post to be advertised

Authority - Cemeteries, funeral parlours and crematoria

MDB Code	Municipality Name	Authority for the function	Municipality understood authority	Authorised as Answered	Understands
DC16	Xhariep District Municipality	No	District		No
FS161	Letsemeng Local Municipality	Yes, including DM function	Local		Yes
FS162	Kopanong Local Municipality	Yes, including DM function	Local		Yes
FS163	Mohokare Local Municipality	Yes, including DM function	Local		Yes

Service Provision - Cemeteries, funeral parlours and crematoria

MDB Code	Municipality Name	Indicated that the municipality performed the function					
		2002	2003	2004	2005	2006	2007
DC16	Xhariep District Municipality	No	No	No	No	No	Yes
FS161	Letsemeng Local Municipality	No	Yes	Yes	Yes	Yes	Yes
FS162	Kopanong Local Municipality	Yes	Yes	Yes	No	Yes	Yes
FS163	Mohokare Local Municipality	Yes	Yes	Yes	Yes	Yes	Yes

MDB Code	Municipality Name	Municipality makes use of external service provider	Section 78 complete	Service level agreement in place	Municipality makes use of external service provider	Section 78 complete	Service level agreement in place
		2006	2006	2006	2007	2007	2007
DC16	Xhariep District Municipality					No	No
FS161	Letsemeng Local Municipality		No	No		No	No
FS162	Kopanong Local Municipality		No	No		No	No
FS163	Mohokare Local Municipality		No	No		No	No

Budget information – Cemeteries, funeral parlours and crematoria

MDB Code	Municipality Name	Operating Budget for function

		2002/2003	2003/2004	2004/2005	2005/2006	2006/2007	2007/2008
DC16	Xhariep District Municipality			0	0	0	0
FS161	Letsemeng Local Municipality		224728	945000	30000	106431	83968
FS162	Kopanong Local Municipality	1476621	470037	787246	727606	790000	1114470
FS163	Mohokare Local Municipality	Part of another budget	300650	30000	70000	77000	400000

MDB Code	Municipality Name	Line item or part allocation				
		2003/2004	2004/2005	2005/2006	2006/2007	2007/2008
DC16	Xhariep District Municipality					
FS161	Letsemeng Local Municipality	Part	Part;	Line;	Line;	Line
FS162	Kopanong Local Municipality	Line	Line;	Line;	Line;	Line
FS163	Mohokare Local Municipality	Part	Part;	Part;	Part;	Part

MDB Code	Municipality Name	Per capita budget			
		2004/2005	2005/2006	2006/2007	2007/2008
DC16	Xhariep District Municipality				
FS161	Letsemeng Local Municipality	21.99	0.70	2.48	1.95
FS162	Kopanong Local Municipality	14.07	13.01	14.12	19.92
FS163	Mohokare Local Municipality	0.83	1.93	2.12	11.01

Staffing – Cemeteries, funeral parlours and crematoria

MDB Code	Municipality Name	Staff Available for the function					
		2002	2003	2004	2005	2006	2007
DC16	Xhariep District Municipality			0	0	0	1
FS161	Letsemeng Local Municipality		12	32	10	8	12
FS162	Kopanong Local Municipality	23	10	9	11	11	45
FS163	Mohokare Local Municipality		4	4	4	3	20

MDB Code	Municipality Name	Staff per capita ratio				Staff Vacancies		
		2004	2005	2006	2007	2005	2006	2007
DC16	Xhariep District Municipality				135241			
FS161	Letsemeng Local Municipality	1343	4298	5373	3582			
FS162	Kopanong Local Municipality	6216	5086	5086	1243			
FS163	Mohokare Local Municipality	9081	9081	12107	1816	4	3	

Equipment – Cemeteries, funeral parlours and crematoria

MDB Code	Municipality Name	Equipment available for the function					
		2002	2003	2004	2005	2006	2007
DC16	Xhariep District Municipality	No	No	No	No	No	Yes
FS161	Letsemeng Local Municipality	Yes	Yes	Yes	Yes	Yes	Yes
FS162	Kopanong Local Municipality	Yes	Yes	Yes	Yes	Yes	Yes

FS163	Mohokare Local Municipality	Yes	Yes	Yes	Yes	Yes	Yes
-------	-----------------------------	-----	-----	-----	-----	-----	-----

Comments and Recommendations – Cemeteries, funeral parlours and crematoria

Comments:

The district municipality and all three local municipalities perform the cemeteries function. DC16 appears to perform an inspection function only while the local municipalities have indicated the control of cemeteries as the primary aspect of this function.

All four managers have tertiary qualifications. There is one acting manager in FS163. Local government experience ranges from 1 year in FS161 to 2 years in FS162 and FS163. None of the managers has been in position for more than two years.

The three local municipalities have budget available for the function. FS161 is the only municipality to have had a decrease in budget since the previous financial year. Per capita budgets range from R1.95 in FS161 to R19.92 in FS162.

All four municipalities have staff available to perform this function, and all show an increase in staff available since the previous financial year. There are no staff vacancies.

There is equipment available for this function in all four municipalities.

In summary:

The municipalities have capacity to perform this function.

Recommendation for the adjustment of the function:

The MDB recommends that the adjustment of the section 84(1)(l) cemeteries function to FS161, FS162 and FS163 is removed.

3.19 Cleansing

Department rendering the service – Cleansing

MDB Code	Municipality Name	Name of Department Performing function	Only department performing function	Name of other department/s performing the function	Description of function performed by municipality
DC16	Xhariep District Municipality				
FS161	Letsemeng Local Municipality	Technical	Yes		Cleaning of public streets
FS162	Kopanong Local Municipality	Community Services	Yes		Cleaning streets and open spaces
FS163	Mohokare Local Municipality	Community Services	Yes		Street sweeping Cleaning public places

Function Management – Cleansing

MDB Code	Municipality Name	Qualification	Years of local Government Experience	Current position Section 57/Acting/Other	Years in existing position	If acting – reason provided
DC16	Xhariep District Municipality					
FS161	Letsemeng Local Municipality		1	MSA Sec 57	1	
FS162	Kopanong Local Municipality	Cert Labour Law	2	MSA Sec 57	1	
FS163	Mohokare Local Municipality	Diploma - Civil Eng	2	Acting	2	Post to be advertised

Authority - Cleansing

MDB Code	Municipality Name	Authority for the function	Municipality understood authority	
			Authorised as Answered	Understands
DC16	Xhariep District Municipality	-		No
FS161	Letsemeng Local Municipality	Yes	Local	Yes
FS162	Kopanong Local Municipality	Yes	Local	Yes
FS163	Mohokare Local Municipality	Yes	Local	Yes

Service Provision - Cleansing

MDB Code	Municipality Name	Indicated that the municipality performed the function					
		2002	2003	2004	2005	2006	2007
DC16	Xhariep District Municipality	No	No	No	No	No	No
FS161	Letsemeng Local Municipality	No	Yes	Yes	Yes	Yes	Yes
FS162	Kopanong Local Municipality	Yes	No	Yes	Yes	Yes	Yes
FS163	Mohokare Local Municipality	Yes	Yes	Yes	Yes	Yes	Yes

MDB Code	Municipality Name	Municipality makes use of external service provider	Section 78 complete	Service level agreement in place	Municipality makes use of external service provider	Section 78 complete	Service level agreement in place
		2006	2006	2006	2007	2007	2007
DC16	Xhariep District Municipality						
FS161	Letsemeng Local Municipality		No	No		No	No
FS162	Kopanong Local Municipality		No	No		No	No
FS163	Mohokare Local Municipality		No	No		No	No

Budget information – Cleansing

MDB Code	Municipality Name	Operating Budget for function					
		2002/2003	2003/2004	2004/2005	2005/2006	2006/2007	2007/2008
DC16	Xhariep District Municipality			0	0	0	0
FS161	Letsemeng Local Municipality		10400	3853190	924670	4388411	6300000
FS162	Kopanong Local Municipality	2444944		5832492	240000	300000	4401970
FS163	Mohokare Local Municipality		5272350	600000	0	0	40153031

MDB Code	Municipality Name	Line item or part allocation				
		2003/2004	2004/2005	2005/2006	2006/2007	2007/2008
DC16	Xhariep District Municipality					

FS161	Letsemeng Local Municipality	Part	Line;	Line;	Part;	Part
FS162	Kopanong Local Municipality		Line;	Line;	Line;	Part
FS163	Mohokare Local Municipality	Line	Part;			Part

MDB Code	Municipality Name	Per capita budget			
		2004/2005	2005/2006	2006/2007	2007/2008
DC16	Xhariep District Municipality				
FS161	Letsemeng Local Municipality	89.65	21.51	102.10	146.58
FS162	Kopanong Local Municipality	104.25	4.29	5.36	78.69
FS163	Mohokare Local Municipality	16.52			1105.57

Staffing – Cleansing

MDB Code	Municipality Name	Staff Available for the function					
		2002	2003	2004	2005	2006	2007
DC16	Xhariep District Municipality			0	0	0	0
FS161	Letsemeng Local Municipality		1	10	5	15	10
FS162	Kopanong Local Municipality	49		47	41	41	45
FS163	Mohokare Local Municipality		6	30	5	18	40

MDB Code	Municipality Name	Staff per capita ratio				Staff Vacancies		
		2004	2005	2006	2007	2005	2006	2007
DC16	Xhariep District Municipality							
FS161	Letsemeng Local Municipality	4298	8596	2865	4298			
FS162	Kopanong Local Municipality	1190	1365	1365	1243			
FS163	Mohokare Local Municipality	1211	7264	2018	908	3	4	

Equipment – Cleansing

MDB Code	Municipality Name	Equipment available for the function					
		2002	2003	2004	2005	2006	2007
DC16	Xhariep District Municipality	No	No	No	No	No	No
FS161	Letsemeng Local Municipality	No	Yes	Yes	Yes	Yes	Yes
FS162	Kopanong Local Municipality	Yes	No	Yes	Yes	Yes	Yes
FS163	Mohokare Local Municipality	Yes	Yes	Yes	Yes	Yes	Yes

Comments and Recommendations – Cleansing

Comments:

All three local municipalities perform the cleansing function from a single department and all have indicated the cleaning of public spaces as one of the primary aspects of the function.

Both managers in FS162 and FS163 have tertiary qualifications. The manager in FS163 is in an acting position. Local government experience ranges from 1 year in FS161 to 2 years in FS162 and FS163. None of the managers has been in position for more than two years.

All three local municipalities have budget for this function, and all show increases in budget available since the previous financial year. Per capita budgets range from R78.69 in FS162 to R1105.57 in

FS163.

There is staff available for the function in all three municipalities. FS161 is the only municipality to have had a decrease in staff available since the previous financial year. There are no staff vacancies for the function.

All three local municipalities have equipment available to perform the function.

In summary:

The local municipalities have capacity to perform this function.

Recommendation for the adjustment of the function:

No adjustments are recommended by the MDB for the 2007/08 assessment period.

3.20 Control of public nuisance

Department rendering the service – Control of public nuisance

MDB Code	Municipality Name	Name of Department Performing function	Only department performing function	Name of other department/s performing the function	Description of function performed by municipality
DC16	Xhariep District Municipality				
FS161	Letsemeng Local Municipality	Technical	Yes		Control Monitoring of public nuisances
FS162	Kopanong Local Municipality				
FS163	Mohokare Local Municipality				

Function Management – Control of public nuisance

MDB Code	Municipality Name	Qualification	Years of local Government Experience	Current position Section 57/Acting/Other	Years in existing position	If acting – reason provided
DC16	Xhariep District Municipality					
FS161	Letsemeng Local Municipality		11	Permanent	11	
FS162	Kopanong Local Municipality					
FS163	Mohokare Local Municipality					

Authority - Control of public nuisance

MDB Code	Municipality Name	Authority for the function	Municipality understood authority	
			Authorised as Answered	Understands
DC16	Xhariep District Municipality	-		No
FS161	Letsemeng Local Municipality	Yes	Local	Yes
FS162	Kopanong Local Municipality	Yes		No
FS163	Mohokare Local Municipality	Yes		No

Service Provision - Control of public nuisance

MDB Code	Municipality Name	Indicated that the municipality performed the function					
		2002	2003	2004	2005	2006	2007
DC16	Xhariep District Municipality	No	No	No	No	No	No
FS161	Letsemeng Local Municipality	No	Yes	No	Yes	No	Yes
FS162	Kopanong Local Municipality	No	No	No	No	No	No
FS163	Mohokare Local Municipality	No	No	No	No	No	No

MDB Code	Municipality Name	Municipality makes use of external service provider	Section 78 complete	Service level agreement in place	Municipality makes use of external service provider	Section 78 complete	Service level agreement in place
		2006	2006	2006	2007	2007	2007
DC16	Xhariep District Municipality						
FS161	Letsemeng Local Municipality					No	No
FS162	Kopanong Local Municipality						
FS163	Mohokare Local Municipality						

Budget information – Control of public nuisance

MDB Code	Municipality Name	Operating Budget for function					
		2002/2003	2003/2004	2004/2005	2005/2006	2006/2007	2007/2008
DC16	Xhariep District Municipality			0	0	0	0
FS161	Letsemeng Local Municipality		20802	0	700000	0	80000
FS162	Kopanong Local Municipality			0	0	0	0
FS163	Mohokare Local Municipality			0	0	0	0

MDB Code	Municipality Name	Line item or part allocation				
		2003/2004	2004/2005	2005/2006	2006/2007	2007/2008
DC16	Xhariep District Municipality					
FS161	Letsemeng Local Municipality	Part		Part;		Part
FS162	Kopanong Local Municipality					
FS163	Mohokare Local Municipality					

MDB Code	Municipality Name	Per capita budget			
		2004/2005	2005/2006	2006/2007	2007/2008
DC16	Xhariep District Municipality				
FS161	Letsemeng Local Municipality		16.29		1.86
FS162	Kopanong Local Municipality				
FS163	Mohokare Local Municipality				

Staffing – Control of public nuisance

MDB Code	Municipality Name	Staff Available for the function					
		2002	2003	2004	2005	2006	2007
DC16	Xhariep District Municipality			0	0	0	0
FS161	Letsemeng Local Municipality		1	0	1	0	1
FS162	Kopanong Local Municipality			0	0	0	0
FS163	Mohokare Local Municipality			0	0	0	0

MDB Code	Municipality Name	Staff per capita ratio				Staff Vacancies		
		2004	2005	2006	2007	2005	2006	2007
DC16	Xhariep District Municipality							
FS161	Letsemeng Local Municipality		42981		42981			
FS162	Kopanong Local Municipality							
FS163	Mohokare Local Municipality							

Equipment – Control of public nuisance

MDB Code	Municipality Name	Equipment available for the function					
		2002	2003	2004	2005	2006	2007
DC16	Xhariep District Municipality	No	No	No	No	No	No
FS161	Letsemeng Local Municipality	No	No	No	No	No	No
FS162	Kopanong Local Municipality	No	No	No	No	No	No
FS163	Mohokare Local Municipality	Yes	No	No	No	No	No

Comments and Recommendations – Control of public nuisance**Comments:**

FS161 is the only municipality that performs the control of public nuisances function and does so from a single department. It has indicated that it controls and monitors public nuisances.

The manager in charge of this function has 11 years of local government experience, is in a permanent position and has been in the position for 11 years.

FS161 has budget available for this function, and one staff member available for the function.

FS161 does not have equipment available to render this function.

In summary:

FS161 has capacity to perform this function.

Recommendation for the adjustment of the function:

No adjustments are recommended by the MDB for the 2007/08 assessment period.

3.21 Control of undertakings that sell liquor to the public**Department rendering the service – Control of undertakings that sell liquor to the public**

MDB Code	Municipality Name	Name of Department Performing function	Only department performing function	Name of other department/s performing	Description of function performed by municipality
----------	-------------------	--	-------------------------------------	---------------------------------------	---

				the function	
DC16	Xhariep District Municipality				
FS161	Letsemeng Local Municipality	Administration	Yes		Control Monitoring
FS162	Kopanong Local Municipality				
FS163	Mohokare Local Municipality	Community Services	Yes		Inspection for licence applications

Function Management – Control of undertakings that sell liquor to the public

MDB Code	Municipality Name	Qualification	Years of local Government Experience	Current position Section 57/Acting/Other	Years in existing position	If acting – reason provided
DC16	Xhariep District Municipality					
FS161	Letsemeng Local Municipality	BSc	1	MSA Sec 57		
FS162	Kopanong Local Municipality					
FS163	Mohokare Local Municipality	Diploma - Civil Eng	2	Acting	2	Post to be advertised

Authority - Control of undertakings that sell liquor to the public

MDB Code	Municipality Name	Authority for the function	Municipality understood authority	
			Authorised as Answered	Understands
DC16	Xhariep District Municipality	-		No
FS161	Letsemeng Local Municipality	Yes	Local	Yes
FS162	Kopanong Local Municipality	Yes		No
FS163	Mohokare Local Municipality	Yes	Local	Yes

Service Provision - Control of undertakings that sell liquor to the public

MDB Code	Municipality Name	Indicated that the municipality performed the function					
		2002	2003	2004	2005	2006	2007
DC16	Xhariep District Municipality	No	No	No	No	No	No
FS161	Letsemeng Local Municipality	No	Yes	No	Yes	No	Yes
FS162	Kopanong Local Municipality	No	No	No	No	No	No
FS163	Mohokare Local Municipality	No	No	No	No	No	Yes

MDB Code	Municipality Name	Municipality makes use of external service provider	Section 78 complete	Service level agreement in place	Municipality makes use of external service provider	Section 78 complete	Service level agreement in place
		2006	2006	2006	2007	2007	2007
DC16	Xhariep District Municipality						
FS161	Letsemeng Local Municipality					No	No

FS162	Kopanong Local Municipality						
FS163	Mohokare Local Municipality					No	No

Budget information – Control of undertakings that sell liquor to the public

MDB Code	Municipality Name	Operating Budget for function					
		2002/2003	2003/2004	2004/2005	2005/2006	2006/2007	2007/2008
DC16	Xhariep District Municipality			0	0	0	0
FS161	Letsemeng Local Municipality		10401	0	2900	0	0
FS162	Kopanong Local Municipality			0	0	0	0
FS163	Mohokare Local Municipality			0	0	0	40153031

MDB Code	Municipality Name	Line item or part allocation				
		2003/2004	2004/2005	2005/2006	2006/2007	2007/2008
DC16	Xhariep District Municipality					
FS161	Letsemeng Local Municipality	Part		Part;		
FS162	Kopanong Local Municipality					
FS163	Mohokare Local Municipality					Part

MDB Code	Municipality Name	Per capita budget			
		2004/2005	2005/2006	2006/2007	2007/2008
DC16	Xhariep District Municipality				
FS161	Letsemeng Local Municipality		0.07		
FS162	Kopanong Local Municipality				
FS163	Mohokare Local Municipality				1105.57

Staffing – Control of undertakings that sell liquor to the public

MDB Code	Municipality Name	Staff Available for the function					
		2002	2003	2004	2005	2006	2007
DC16	Xhariep District Municipality			0	0	0	0
FS161	Letsemeng Local Municipality		1	0	1	0	1
FS162	Kopanong Local Municipality			0	0	0	0
FS163	Mohokare Local Municipality			0	0	0	1

MDB Code	Municipality Name	Staff per capita ratio				Staff Vacancies		
		2004	2005	2006	2007	2005	2006	2007
DC16	Xhariep District Municipality							
FS161	Letsemeng Local Municipality		42981		42981			
FS162	Kopanong Local Municipality							
FS163	Mohokare Local Municipality				36319			

Equipment – Control of undertakings that sell liquor to the public

MDB Code	Municipality Name	Equipment available for the function					
		2002	2003	2004	2005	2006	2007
DC16	Xhariep District Municipality	No	No	No	No	No	No
FS161	Letsemeng Local Municipality	No	No	No	No	No	Yes
FS162	Kopanong Local Municipality	No	No	No	No	No	No
FS163	Mohokare Local Municipality	No	No	No	No	No	Yes

Comments and Recommendations – Control of undertakings that sell liquor to the public**Comments:**

FS161 and FS163 perform this function. FS 161 performs a control and monitoring function while FS163 inspects licence applications.

Both managers have tertiary qualifications and the manager in FS163 is in an acting position. Both appear to have been recent appointments with the manager for FS163 having been in position the longest, at two years.

FS163 has budget available to perform the function and shows an increase since the previous financial year.

FS161 and FS163 each have one staff member available to perform the function and there are no staff vacancies.

Both municipalities have equipment available for the function.

In summary:

FS161 and FS163 have capacity to perform this function.

Recommendation for the adjustment of the function:

No adjustments are recommended by the MDB for the 2007/08 assessment period.

3.22 Facilities for the accommodation, care and burial of animals**Department rendering the service – Facilities for the accommodation, care and burial of animals**

MDB Code	Municipality Name	Name of Department Performing function	Only department performing function	Name of other department/s performing the function	Description of function performed by municipality
DC16	Xhariep District Municipality				
FS161	Letsemeng Local Municipality				
FS162	Kopanong Local Municipality				
FS163	Mohokare Local Municipality				

Function Management – Facilities for the accommodation, care and burial of animals

MDB Code	Municipality Name	Qualification	Years of local Government Experience	Current position Section 57/Acting/Other	Years in existing position	If acting – reason provided
DC16	Xhariep District Municipality					
FS161	Letsemeng Local Municipality					
FS162	Kopanong Local Municipality					
FS163	Mohokare Local Municipality					

Authority - Facilities for the accommodation, care and burial of animals

MDB Code	Municipality Name	Authority for the function	Municipality understood authority	
			Authorised as Answered	Understands
DC16	Xhariep District Municipality	-		No
FS161	Letsemeng Local Municipality	Yes		No
FS162	Kopanong Local Municipality	Yes		No
FS163	Mohokare Local Municipality	Yes		No

Service Provision - Facilities for the accommodation, care and burial of animals

MDB Code	Municipality Name	Indicated that the municipality performed the function					
		2002	2003	2004	2005	2006	2007
DC16	Xhariep District Municipality	No	No	No	No	No	No
FS161	Letsemeng Local Municipality	No	No	No	No	No	No
FS162	Kopanong Local Municipality	No	No	No	No	No	No
FS163	Mohokare Local Municipality	No	No	No	No	No	No

MDB Code	Municipality Name	Municipality makes use of external service provider	Section 78 complete	Service level agreement in place	Municipality makes use of external service provider	Section 78 complete	Service level agreement in place
		2006	2006	2006	2007	2007	2007
DC16	Xhariep District Municipality						
FS161	Letsemeng Local Municipality						
FS162	Kopanong Local Municipality						
FS163	Mohokare Local Municipality						

Budget information – Facilities for the accommodation, care and burial of animals

MDB Code	Municipality Name	Operating Budget for function					
		2002/2003	2003/2004	2004/2005	2005/2006	2006/2007	2007/2008

DC16	Xhariep District Municipality			0	0	0	0
FS161	Letsemeng Local Municipality			0	0	0	0
FS162	Kopanong Local Municipality			0	0	0	0
FS163	Mohokare Local Municipality			0	0	0	0

MDB Code	Municipality Name	Line item or part allocation				
		2003/2004	2004/2005	2005/2006	2006/2007	2007/2008
DC16	Xhariep District Municipality					
FS161	Letsemeng Local Municipality					
FS162	Kopanong Local Municipality					
FS163	Mohokare Local Municipality					

MDB Code	Municipality Name	Per capita budget			
		2004/2005	2005/2006	2006/2007	2007/2008
DC16	Xhariep District Municipality				
FS161	Letsemeng Local Municipality				
FS162	Kopanong Local Municipality				
FS163	Mohokare Local Municipality				

Staffing – Facilities for the accommodation, care and burial of animals

MDB Code	Municipality Name	Staff Available for the function					
		2002	2003	2004	2005	2006	2007
DC16	Xhariep District Municipality			0	0	0	0
FS161	Letsemeng Local Municipality			0	0	0	0
FS162	Kopanong Local Municipality			0	0	0	0
FS163	Mohokare Local Municipality			0	0	0	0

MDB Code	Municipality Name	Staff per capita ratio				Staff Vacancies		
		2004	2005	2006	2007	2005	2006	2007
DC16	Xhariep District Municipality							
FS161	Letsemeng Local Municipality							
FS162	Kopanong Local Municipality							
FS163	Mohokare Local Municipality							

Equipment – Facilities for the accommodation, care and burial of animals

MDB Code	Municipality Name	Equipment available for the function					
		2002	2003	2004	2005	2006	2007
DC16	Xhariep District Municipality	No	No	No	No	No	No
FS161	Letsemeng Local Municipality	No	No	No	No	No	No
FS162	Kopanong Local Municipality	No	No	No	No	No	No
FS163	Mohokare Local Municipality	No	No	No	No	No	No

Comments and Recommendations – Facilities for the accommodation, care and burial of animals

<p>Comments: This function is not performed by any of the municipalities.</p>
<p>Recommendation for the adjustment of the function: No adjustments are recommended by the MDB for the 2007/08 assessment period.</p>

3.23 Fencing and fences

Department rendering the service – Fencing and fences

MDB Code	Municipality Name	Name of Department Performing function	Only department performing function	Name of other department/s performing the function	Description of function performed by municipality
DC16	Xhariep District Municipality				
FS161	Letsemeng Local Municipality	Administration	Yes		Control
FS162	Kopanong Local Municipality	Community Services	Yes		Maintenance and erection of fences where required
FS163	Mohokare Local Municipality	Community Services	Yes		Fencing of properties when required

Function Management – Fencing and fences

MDB Code	Municipality Name	Qualification	Years of local Government Experience	Current position Section 57/Acting/Other	Years in existing position	If acting – reason provided
DC16	Xhariep District Municipality					
FS161	Letsemeng Local Municipality	Matric	2	Permanent	2	
FS162	Kopanong Local Municipality	Cert Labour Law	2	MSA Sec 57	1	
FS163	Mohokare Local Municipality	Diploma - Civil Eng	2	Acting		Post to be advertised

Authority - Fencing and fences

MDB Code	Municipality Name	Authority for the function	Municipality understood authority	
			Authorised as Answered	Understands
DC16	Xhariep District Municipality	-		No
FS161	Letsemeng Local Municipality	Yes	Local	Yes
FS162	Kopanong Local Municipality	Yes	Local	Yes
FS163	Mohokare Local Municipality	Yes	Local	Yes

Service Provision - Fencing and fences

MDB Code	Municipality Name	Indicated that the municipality performed the function

		2002	2003	2004	2005	2006	2007
DC16	Xhariep District Municipality	No	No	No	No	No	No
FS161	Letsemeng Local Municipality	No	No	No	Yes	Yes	Yes
FS162	Kopanong Local Municipality	No	No	No	Yes	Yes	Yes
FS163	Mohokare Local Municipality	No	No	No	No	No	Yes

MDB Code	Municipality Name	Municipality makes use of external service provider	Section 78 complete	Service level agreement in place	Municipality makes use of external service provider	Section 78 complete	Service level agreement in place
		2006	2006	2006	2007	2007	2007
DC16	Xhariep District Municipality						
FS161	Letsemeng Local Municipality		No	No		No	No
FS162	Kopanong Local Municipality		No	No		No	No
FS163	Mohokare Local Municipality					No	No

Budget information – Fencing and fences

MDB Code	Municipality Name	Operating Budget for function					
		2002/2003	2003/2004	2004/2005	2005/2006	2006/2007	2007/2008
DC16	Xhariep District Municipality			0	0	0	0
FS161	Letsemeng Local Municipality			0	250000	275000	0
FS162	Kopanong Local Municipality			0	50000	60000	4401970
FS163	Mohokare Local Municipality			0	0	0	40153031

MDB Code	Municipality Name	Line item or part allocation				
		2003/2004	2004/2005	2005/2006	2006/2007	2007/2008
DC16	Xhariep District Municipality					
FS161	Letsemeng Local Municipality			Part;	Part;	
FS162	Kopanong Local Municipality			Line;	Line;	Part
FS163	Mohokare Local Municipality					Part

MDB Code	Municipality Name	Per capita budget			
		2004/2005	2005/2006	2006/2007	2007/2008
DC16	Xhariep District Municipality				
FS161	Letsemeng Local Municipality		5.82	6.40	
FS162	Kopanong Local Municipality		0.89	1.07	78.69
FS163	Mohokare Local Municipality				1105.57

Staffing – Fencing and fences

MDB	Municipality Name	Staff Available for the function

Code		2002	2003	2004	2005	2006	2007
DC16	Xhariep District Municipality			0	0	0	0
FS161	Letsemeng Local Municipality			0	5	5	1
FS162	Kopanong Local Municipality			0	40	40	45
FS163	Mohokare Local Municipality			0	0	0	40

MDB Code	Municipality Name	Staff per capita ratio				Staff Vacancies		
		2004	2005	2006	2007	2005	2006	2007
DC16	Xhariep District Municipality							
FS161	Letsemeng Local Municipality		8596	8596	42981			
FS162	Kopanong Local Municipality		1399	1399	1243			
FS163	Mohokare Local Municipality				908			

Equipment – Fencing and fences

MDB Code	Municipality Name	Equipment available for the function					
		2002	2003	2004	2005	2006	2007
DC16	Xhariep District Municipality	No	No	No	No	No	No
FS161	Letsemeng Local Municipality	No	No	No	Yes	Yes	Yes
FS162	Kopanong Local Municipality	No	No	No	Yes	Yes	Yes
FS163	Mohokare Local Municipality	No	No	No	No	No	Yes

Comments and Recommendations – Fencing and fences

Comments:

All three local municipalities perform the fencing and fences function. FS162 and FS163 indicate the fencing of properties when required while FS161 has indicated control of fencing and fences.

The manager for FS161 has a matric only while both other managers have tertiary qualifications. All three managers have two years of local government experience. The manager for FS163 is in an acting position. None of the managers has been in position for more than two years.

FS162 and FS163 have budget available for the function and both show an increase since the previous financial year. FS163 has the highest per capita budget of R1105.57 while FS162 has a per capita budget of R78.69.

All three local municipalities have staff available for the function although FS161 has had a decrease in staff available since the previous financial year. There are no staff vacancies.

There is equipment available in all local municipalities.

In summary:

The local municipalities have capacity to perform this function.

Recommendation for the adjustment of the function:

No adjustments are recommended by the MDB for the 2007/08 assessment period.

3.24 Licensing of dogs

Department rendering the service – Licensing of dogs

MDB Code	Municipality Name	Name of Department Performing function	Only department performing function	Name of other department/s performing the function	Description of function performed by municipality
DC16	Xhariep District Municipality				
FS161	Letsemeng Local Municipality	Technical Services	Yes		
FS162	Kopanong Local Municipality				
FS163	Mohokare Local Municipality				

Function Management – Licensing of dogs

MDB Code	Municipality Name	Qualification	Years of local Government Experience	Current position Section 57/Acting/Other	Years in existing position	If acting – reason provided
DC16	Xhariep District Municipality					
FS161	Letsemeng Local Municipality					
FS162	Kopanong Local Municipality					
FS163	Mohokare Local Municipality					

Authority - Licensing of dogs

MDB Code	Municipality Name	Authority for the function	Municipality understood authority	
			Authorised as Answered	Understands
DC16	Xhariep District Municipality	-		No
FS161	Letsemeng Local Municipality	Yes		No
FS162	Kopanong Local Municipality	Yes		No
FS163	Mohokare Local Municipality	Yes		No

Service Provision - Licensing of dogs

MDB Code	Municipality Name	Indicated that the municipality performed the function					
		2002	2003	2004	2005	2006	2007
DC16	Xhariep District Municipality	No	No	No	No	No	No
FS161	Letsemeng Local Municipality	No	Yes	No	Yes	Yes	No
FS162	Kopanong Local Municipality	No	No	No	No	No	No
FS163	Mohokare Local Municipality	No	No	No	No	No	No

MDB Code	Municipality Name	Municipality makes use of external service provider	Section 78 complete	Service level agreement in place	Municipality makes use of external service provider	Section 78 complete	Service level agreement in place
		2006	2006	2006	2007	2007	2007
DC16	Xhariep District						

	Municipality						
FS161	Letsemeng Local Municipality		No	No			
FS162	Kopanong Local Municipality						
FS163	Mohokare Local Municipality						

Budget information – Licensing of dogs

MDB Code	Municipality Name	Operating Budget for function					
		2002/2003	2003/2004	2004/2005	2005/2006	2006/2007	2007/2008
DC16	Xhariep District Municipality			0	0	0	0
FS161	Letsemeng Local Municipality			0	2900	4000	0
FS162	Kopanong Local Municipality			0	0	0	0
FS163	Mohokare Local Municipality			0	0	0	0

MDB Code	Municipality Name	Line item or part allocation				
		2003/2004	2004/2005	2005/2006	2006/2007	2007/2008
DC16	Xhariep District Municipality					
FS161	Letsemeng Local Municipality			Part;	Part;	
FS162	Kopanong Local Municipality					
FS163	Mohokare Local Municipality					

MDB Code	Municipality Name	Per capita budget			
		2004/2005	2005/2006	2006/2007	2007/2008
DC16	Xhariep District Municipality				
FS161	Letsemeng Local Municipality		0.07	0.09	
FS162	Kopanong Local Municipality				
FS163	Mohokare Local Municipality				

Staffing – Licensing of dogs

MDB Code	Municipality Name	Staff Available for the function					
		2002	2003	2004	2005	2006	2007
DC16	Xhariep District Municipality			0	0	0	0
FS161	Letsemeng Local Municipality		1	0	1	1	0
FS162	Kopanong Local Municipality			0	0	0	0
FS163	Mohokare Local Municipality	0		0	0	0	0

MDB Code	Municipality Name	Staff per capita ratio				Staff Vacancies		
		2004	2005	2006	2007	2005	2006	2007
DC16	Xhariep District Municipality							
FS161	Letsemeng Local Municipality		42981	42981				
FS162	Kopanong Local Municipality							

FS163	Mohokare Local Municipality							
-------	-----------------------------	--	--	--	--	--	--	--

Equipment – Licensing of dogs

MDB Code	Municipality Name	Equipment available for the function					
		2002	2003	2004	2005	2006	2007
DC16	Xhariep District Municipality	No	No	No	No	No	No
FS161	Letsemeng Local Municipality	No	No	No	No	No	No
FS162	Kopanong Local Municipality	No	No	No	No	No	No
FS163	Mohokare Local Municipality	No	No	No	No	No	No

Comments and Recommendations – Licensing of dogs

Comments:

This function is not performed by any of the municipalities.

Recommendation for the adjustment of the function:

No adjustments are recommended by the MDB for the 2007/08 assessment period.

3.25 Licensing and control of undertakings that sell food to the public

Department rendering the service – Licensing and control of undertakings that sell food to the public

MDB Code	Municipality Name	Name of Department Performing function	Only department performing function	Name of other department/s performing the function	Description of function performed by municipality
DC16	Xhariep District Municipality				
FS161	Letsemeng Local Municipality	Technical Services	Yes		Control
FS162	Kopanong Local Municipality				
FS163	Mohokare Local Municipality	Community Services	Yes		Inspection of premises

Function Management – Licensing and control of undertakings that sell food to the public

MDB Code	Municipality Name	Qualification	Years of local Government Experience	Current position Section 57/Acting/Other	Years in existing position	If acting – reason provided
DC16	Xhariep District Municipality					
FS161	Letsemeng Local Municipality	Health and Environmental Diploma	11	Permanent	11	
FS162	Kopanong Local Municipality					
FS163	Mohokare Local Municipality	Diploma - Civil Eng	2	Acting	2	Post to be advertised

Authority - Licensing and control of undertakings that sell food to the public

			Municipality understood authority
--	--	--	-----------------------------------

MDB Code	Municipality Name	Authority for the function	Authorised as Answered	Understands
DC16	Xhariep District Municipality	-		No
FS161	Letsemeng Local Municipality	Yes	Local	Yes
FS162	Kopanong Local Municipality	Yes		No
FS163	Mohokare Local Municipality	Yes	Local	Yes

Service Provision - Licensing and control of undertakings that sell food to the public

MDB Code	Municipality Name	Indicated that the municipality performed the function					
		2002	2003	2004	2005	2006	2007
DC16	Xhariep District Municipality	No	No	No	No	No	No
FS161	Letsemeng Local Municipality	Yes	Yes	No	Yes	Yes	Yes
FS162	Kopanong Local Municipality	Yes	Yes	No	No	No	No
FS163	Mohokare Local Municipality	Yes	No	No	No	No	Yes

MDB Code	Municipality Name	Municipality makes use of external service provider	Section 78 complete	Service level agreement in place	Municipality makes use of external service provider	Section 78 complete	Service level agreement in place
		2006	2006	2006	2007	2007	2007
DC16	Xhariep District Municipality						
FS161	Letsemeng Local Municipality		No	No		No	No
FS162	Kopanong Local Municipality						
FS163	Mohokare Local Municipality					No	No

Budget information – Licensing and control of undertakings that sell food to the public

MDB Code	Municipality Name	Operating Budget for function					
		2002/2003	2003/2004	2004/2005	2005/2006	2006/2007	2007/2008
DC16	Xhariep District Municipality			0	0	0	0
FS161	Letsemeng Local Municipality	19370	10400	0	3000	4000	0
FS162	Kopanong Local Municipality	Part of another budget		0	0	0	0
FS163	Mohokare Local Municipality	1100		0	0	0	40153031

MDB Code	Municipality Name	Line item or part allocation				
		2003/2004	2004/2005	2005/2006	2006/2007	2007/2008
DC16	Xhariep District Municipality					
FS161	Letsemeng Local Municipality	Part		Part;	Line;	

FS162	Kopanong Local Municipality					
FS163	Mohokare Local Municipality					Part

MDB Code	Municipality Name	Per capita budget			
		2004/2005	2005/2006	2006/2007	2007/2008
DC16	Xhariep District Municipality				
FS161	Letsemeng Local Municipality		0.07	0.09	
FS162	Kopanong Local Municipality				
FS163	Mohokare Local Municipality				1105.57

Staffing – Licensing and control of undertakings that sell food to the public

MDB Code	Municipality Name	Staff Available for the function					
		2002	2003	2004	2005	2006	2007
DC16	Xhariep District Municipality			0	0	0	0
FS161	Letsemeng Local Municipality	1	1	0	1	1	1
FS162	Kopanong Local Municipality	2	1	0	0	0	0
FS163	Mohokare Local Municipality	1		0	0	0	1

MDB Code	Municipality Name	Staff per capita ratio				Staff Vacancies		
		2004	2005	2006	2007	2005	2006	2007
DC16	Xhariep District Municipality							
FS161	Letsemeng Local Municipality		42981	42981	42981			
FS162	Kopanong Local Municipality							
FS163	Mohokare Local Municipality				36319			

Equipment – Licensing and control of undertakings that sell food to the public

MDB Code	Municipality Name	Equipment available for the function					
		2002	2003	2004	2005	2006	2007
DC16	Xhariep District Municipality	No	No	No	No	No	No
FS161	Letsemeng Local Municipality	No	No	No	No	No	Yes
FS162	Kopanong Local Municipality	Yes	No	No	No	No	No
FS163	Mohokare Local Municipality	Yes	No	No	No	No	Yes

Comments and Recommendations – Licensing and control of undertakings that sell food to the public

Comments:

FS161 and FS163 perform this function. FS 161 performs a control function while FS163 inspects premises.

Both managers have tertiary qualifications and the manager in FS163 is in an acting position. The manager for FS161 has 11 years of local government experience and has been in position for the longest (11 years).

FS163 has budget available to perform the function and shows an increase since the previous financial year.

FS161 and FS163 each have one staff member available to perform the function and there are no staff vacancies.

Both municipalities have equipment available for the function.

In summary:

FS161 and FS163 have capacity to perform this function.

Recommendation for the adjustment of the function:

No adjustments are recommended by the MDB for the 2007/08 assessment period.

3.26 Local amenities

Department rendering the service – Local amenities

MDB Code	Municipality Name	Name of Department Performing function	Only department performing function	Name of other department/s performing the function	Description of function performed by municipality
DC16	Xhariep District Municipality				
FS161	Letsemeng Local Municipality	Technical Services	Yes		Maintenance Restoration Preservation
FS162	Kopanong Local Municipality	Community Services	Yes		Maintenance of municipal land and building
FS163	Mohokare Local Municipality	Community Services	Yes		Maintenance and upgrading of buildings

Function Management – Local amenities

MDB Code	Municipality Name	Qualification	Years of local Government Experience	Current position Section 57/Acting/Other	Years in existing position	If acting – reason provided
DC16	Xhariep District Municipality					
FS161	Letsemeng Local Municipality	BSc	1	MSA Sec 57	1	
FS162	Kopanong Local Municipality	Cert Labour Law	2	MSA Sec 57	1	
FS163	Mohokare Local Municipality	Diploma - Civil Eng	2	Acting	2	Post to be advertised

Authority - Local amenities

MDB Code	Municipality Name	Authority for the function	Municipality understood authority	
			Authorised as Answered	Understands
DC16	Xhariep District Municipality	-		No
FS161	Letsemeng Local Municipality	Yes	Local	Yes
FS162	Kopanong Local Municipality	Yes	Local	Yes
FS163	Mohokare Local Municipality	Yes	Local	Yes

Service Provision - Local amenities

MDB Code	Municipality Name	Indicated that the municipality performed the function

		2002	2003	2004	2005	2006	2007
DC16	Xhariep District Municipality	No	No	No	No	No	No
FS161	Letsemeng Local Municipality	No	No	No	Yes	Yes	Yes
FS162	Kopanong Local Municipality	No	No	No	No	No	Yes
FS163	Mohokare Local Municipality	Yes	No	No	Yes	No	Yes

MDB Code	Municipality Name	Municipality makes use of external service provider	Section 78 complete	Service level agreement in place	Municipality makes use of external service provider	Section 78 complete	Service level agreement in place
		2006	2006	2006	2007	2007	2007
DC16	Xhariep District Municipality						
FS161	Letsemeng Local Municipality		No	No		No	No
FS162	Kopanong Local Municipality					No	No
FS163	Mohokare Local Municipality		No	No		No	No

Budget information – Local amenities

MDB Code	Municipality Name	Operating Budget for function					
		2002/2003	2003/2004	2004/2005	2005/2006	2006/2007	2007/2008
DC16	Xhariep District Municipality			0	0	0	0
FS161	Letsemeng Local Municipality			0	55000	60000	937000
FS162	Kopanong Local Municipality			0	0	0	4401970
FS163	Mohokare Local Municipality			0	481000	520000	40153031

MDB Code	Municipality Name	Line item or part allocation				
		2003/2004	2004/2005	2005/2006	2006/2007	2007/2008
DC16	Xhariep District Municipality					
FS161	Letsemeng Local Municipality			Part;	Part;	Part
FS162	Kopanong Local Municipality					Part
FS163	Mohokare Local Municipality			Line;	Part;	Part

MDB Code	Municipality Name	Per capita budget			
		2004/2005	2005/2006	2006/2007	2007/2008
DC16	Xhariep District Municipality				
FS161	Letsemeng Local Municipality		1.28	1.40	21.80
FS162	Kopanong Local Municipality				78.69
FS163	Mohokare Local Municipality		13.24	14.32	1105.57

Staffing – Local amenities

MDB	Municipality Name	Staff Available for the function

Code		2002	2003	2004	2005	2006	2007
DC16	Xhariep District Municipality			0	0	0	0
FS161	Letsemeng Local Municipality			0	6	1	4
FS162	Kopanong Local Municipality			0	0	0	45
FS163	Mohokare Local Municipality	1		0	3	1	20

MDB Code	Municipality Name	Staff per capita ratio				Staff Vacancies		
		2004	2005	2006	2007	2005	2006	2007
DC16	Xhariep District Municipality							
FS161	Letsemeng Local Municipality		7164	42981	10745			
FS162	Kopanong Local Municipality				1243			
FS163	Mohokare Local Municipality		12107	36322	1816		1	

Equipment – Local amenities

MDB Code	Municipality Name	Equipment available for the function					
		2002	2003	2004	2005	2006	2007
DC16	Xhariep District Municipality	No	No	No	No	No	No
FS161	Letsemeng Local Municipality	No	No	No	Yes	Yes	Yes
FS162	Kopanong Local Municipality	No	No	No	No	No	Yes
FS163	Mohokare Local Municipality	Yes	No	No	Yes	No	Yes

Comments and Recommendations – Local amenities

Comments:

All three local municipalities perform the local amenities function from a single department and all have indicated maintenance as one of the primary aspects of the function.

The three managers have tertiary qualifications although none of them has more than two years of local government experience. In addition, they seem to be recent appointments as none of them has been in position for more than two years. The manager in FS163 is in an acting position.

Budget is available in all local municipalities for this function, and all show an increase in budget available since the previous financial year. Per capita budgets range from R21.80 in FS161 to R1105.57 in FS163.

All three local municipalities have staff available and each shows an increase in staff available since the previous financial year.

There is equipment available for the function in all three local municipalities

In summary:

The local municipalities have capacity to perform this function.

Recommendation for the adjustment of the function:

No adjustments are recommended by the MDB for the 2007/08 assessment period.

3.27 Local sport facilities

Department rendering the service – Local sport facilities

MDB Code	Municipality Name	Name of Department Performing function	Only department performing function	Name of other department/s performing the function	Description of function performed by municipality
DC16	Xhariep District Municipality				
FS161	Letsemeng Local Municipality	Technical Services	Yes		Maintenance
FS162	Kopanong Local Municipality	Community Services	Yes		Maintenance of sport facilities
FS163	Mohokare Local Municipality	Community Services	Yes		Maintenance and upgrading of sport facilities

Function Management – Local sport facilities

MDB Code	Municipality Name	Qualification	Years of local Government Experience	Current position Section 57/Acting/Other	Years in existing position	If acting – reason provided
DC16	Xhariep District Municipality					
FS161	Letsemeng Local Municipality	BSc	1	MSA Sec 57	1	
FS162	Kopanong Local Municipality	Cert Labour Law	2	MSA Sec 57	1	
FS163	Mohokare Local Municipality	Diploma - Civil Eng	2	Acting	2	Post to be advertised

Authority - Local sport facilities

MDB Code	Municipality Name	Authority for the function	Municipality understood authority	
			Authorised as Answered	Understands
DC16	Xhariep District Municipality	-		No
FS161	Letsemeng Local Municipality	Yes	Local	Yes
FS162	Kopanong Local Municipality	Yes	Local	Yes
FS163	Mohokare Local Municipality	Yes	Local	Yes

Service Provision - Local sport facilities

MDB Code	Municipality Name	Indicated that the municipality performed the function					
		2002	2003	2004	2005	2006	2007
DC16	Xhariep District Municipality	No	No	No	Yes	Yes	No
FS161	Letsemeng Local Municipality	No	Yes	Yes	Yes	Yes	Yes
FS162	Kopanong Local Municipality	Yes	Yes	Yes	Yes	Yes	Yes
FS163	Mohokare Local Municipality	Yes	Yes	Yes	Yes	Yes	Yes

MDB Code	Municipality Name	Municipality makes use of external service provider	Section 78 complete	Service level agreement in place	Municipality makes use of external service provider	Section 78 complete	Service level agreement in place
		2006	2006	2006	2007	2007	2007
DC16	Xhariep District		No	No			

	Municipality						
FS161	Letsemeng Local Municipality		No	No		No	No
FS162	Kopanong Local Municipality		No	No		No	No
FS163	Mohokare Local Municipality		No	No		No	No

Budget information – Local sport facilities

MDB Code	Municipality Name	Operating Budget for function					
		2002/2003	2003/2004	2004/2005	2005/2006	2006/2007	2007/2008
DC16	Xhariep District Municipality			0	35000	44000	0
FS161	Letsemeng Local Municipality		222057	191000	173664	204436	290155
FS162	Kopanong Local Municipality	1476621	307284	1060012	482370	500000	813612
FS163	Mohokare Local Municipality	Part of another budget	1375795	400000	1020916.44	1550000	1100000

MDB Code	Municipality Name	Line item or part allocation				
		2003/2004	2004/2005	2005/2006	2006/2007	2007/2008
DC16	Xhariep District Municipality			Line;	Part;	
FS161	Letsemeng Local Municipality	Part	Part;	Line;	Part;	Line
FS162	Kopanong Local Municipality	Line	Line;	Line;	Line;	Line
FS163	Mohokare Local Municipality	Part	Part;	Line;	Part;	Line

MDB Code	Municipality Name	Per capita budget			
		2004/2005	2005/2006	2006/2007	2007/2008
DC16	Xhariep District Municipality		0.26	0.33	
FS161	Letsemeng Local Municipality	4.44	4.04	4.76	6.75
FS162	Kopanong Local Municipality	18.95	8.62	8.94	14.54
FS163	Mohokare Local Municipality	11.01	28.11	42.67	30.29

Staffing – Local sport facilities

MDB Code	Municipality Name	Staff Available for the function					
		2002	2003	2004	2005	2006	2007
DC16	Xhariep District Municipality			0	3	3	0
FS161	Letsemeng Local Municipality		10	2	0	11	7
FS162	Kopanong Local Municipality	23	6	13	13	13	45
FS163	Mohokare Local Municipality	2	6	0	14	15	40

MDB Code	Municipality Name	Staff per capita ratio				Staff Vacancies		
		2004	2005	2006	2007	2005	2006	2007
DC16	Xhariep District Municipality		45083	45083				
FS161	Letsemeng Local Municipality	21491		3907	6140			

FS162	Kopanong Local Municipality	4303	4303	4303	1243			
FS163	Mohokare Local Municipality		2594	2421	908	4	6	

Equipment – Local sport facilities

MDB Code	Municipality Name	Equipment available for the function					
		2002	2003	2004	2005	2006	2007
DC16	Xhariep District Municipality	No	No	No	Yes	Yes	No
FS161	Letsemeng Local Municipality	No	Yes	Yes	Yes	Yes	Yes
FS162	Kopanong Local Municipality	Yes	Yes	Yes	Yes	Yes	Yes
FS163	Mohokare Local Municipality	Yes	Yes	Yes	Yes	Yes	Yes

Comments and Recommendations – Local sport facilities

Comments:

The local sports facilities function is performed by all three local municipalities. Each municipality has indicated maintenance as one of the primary aspects of the function.

All three managers have tertiary qualifications although none has more than two years of local government experience. None of the managers has been in position for more than two years. There is one acting manager in FS163.

There is budget available for the function in each local municipality. FS161 and FS162 both show increases from the previous financial year while FS163 shows a decrease. Per capita budgets range from R6.75 in FS161 to R30.29 in FS163.

All three local municipalities have staff available for this function although FS161 has had a decrease in staff available since the previous financial year. There are no staff vacancies for the function.

There is equipment available in all municipalities performing the function.

In summary:

Recommendation for the adjustment of the function:

No adjustments are recommended by the MDB for the 2007/08 assessment period.

3.28 Markets

Department rendering the service – Markets

MDB Code	Municipality Name	Name of Department Performing function	Only department performing function	Name of other department/s performing the function	Description of function performed by municipality
DC16	Xhariep District Municipality				
FS161	Letsemeng Local Municipality				
FS162	Kopanong Local Municipality				
FS163	Mohokare Local Municipality				

Function Management – Markets

MDB Code	Municipality Name	Qualification	Years of local Government Experience	Current position Section 57/Acting/Other	Years in existing position	If acting – reason provided
DC16	Xhariep District Municipality					
FS161	Letsemeng Local Municipality					
FS162	Kopanong Local Municipality					
FS163	Mohokare Local Municipality					

Authority - Markets

MDB Code	Municipality Name	Authority for the function	Municipality understood authority	
			Authorised as Answered	Understands
DC16	Xhariep District Municipality	Yes		No
FS161	Letsemeng Local Municipality	Yes		No
FS162	Kopanong Local Municipality	Yes		No
FS163	Mohokare Local Municipality	Yes		No

Service Provision - Markets

MDB Code	Municipality Name	Indicated that the municipality performed the function					
		2002	2003	2004	2005	2006	2007
DC16	Xhariep District Municipality	No	No	No	No	No	No
FS161	Letsemeng Local Municipality	No	No	No	No	No	No
FS162	Kopanong Local Municipality	No	No	No	No	No	No
FS163	Mohokare Local Municipality	No	No	No	No	No	No

MDB Code	Municipality Name	Municipality makes use of external service provider	Section 78 complete	Service level agreement in place	Municipality makes use of external service provider	Section 78 complete	Service level agreement in place
		2006	2006	2006	2007	2007	2007
DC16	Xhariep District Municipality						
FS161	Letsemeng Local Municipality						
FS162	Kopanong Local Municipality						
FS163	Mohokare Local Municipality						

Budget information – Markets

MDB Code	Municipality Name	Operating Budget for function					
		2002/2003	2003/2004	2004/2005	2005/2006	2006/2007	2007/2008
DC16	Xhariep District Municipality			0	0	0	0

FS161	Letsemeng Local Municipality			0	0	0	0
FS162	Kopanong Local Municipality			0	0	0	0
FS163	Mohokare Local Municipality			0	0	0	0

MDB Code	Municipality Name	Line item or part allocation				
		2003/2004	2004/2005	2005/2006	2006/2007	2007/2008
DC16	Xhariep District Municipality					
FS161	Letsemeng Local Municipality					
FS162	Kopanong Local Municipality					
FS163	Mohokare Local Municipality					

MDB Code	Municipality Name	Per capita budget			
		2004/2005	2005/2006	2006/2007	2007/2008
DC16	Xhariep District Municipality				
FS161	Letsemeng Local Municipality				
FS162	Kopanong Local Municipality				
FS163	Mohokare Local Municipality				

Staffing – Markets

MDB Code	Municipality Name	Staff Available for the function					
		2002	2003	2004	2005	2006	2007
DC16	Xhariep District Municipality			0	0	0	0
FS161	Letsemeng Local Municipality			0	0	0	0
FS162	Kopanong Local Municipality			0	0	0	0
FS163	Mohokare Local Municipality			0	0	0	0

MDB Code	Municipality Name	Staff per capita ratio				Staff Vacancies		
		2004	2005	2006	2007	2005	2006	2007
DC16	Xhariep District Municipality							
FS161	Letsemeng Local Municipality							
FS162	Kopanong Local Municipality							
FS163	Mohokare Local Municipality							

Equipment – Markets

MDB Code	Municipality Name	Equipment available for the function					
		2002	2003	2004	2005	2006	2007
DC16	Xhariep District Municipality	No	No	No	No	No	No
FS161	Letsemeng Local Municipality	No	No	No	No	No	No
FS162	Kopanong Local Municipality	No	No	No	No	No	No
FS163	Mohokare Local Municipality	No	No	No	No	No	No

Comments and Recommendations – Markets**Comments:**

This function is not performed by any of the municipalities.

Recommendation for the adjustment of the function:

No adjustments are recommended by the MDB for the 2007/08 assessment period.

3.29 Municipal abattoirs**Department rendering the service – Municipal abattoirs**

MDB Code	Municipality Name	Name of Department Performing function	Only department performing function	Name of other department/s performing the function	Description of function performed by municipality
DC16	Xhariep District Municipality				
FS161	Letsemeng Local Municipality				
FS162	Kopanong Local Municipality				
FS163	Mohokare Local Municipality				

Function Management – Municipal abattoirs

MDB Code	Municipality Name	Qualification	Years of local Government Experience	Current position Section 57/Acting/Other	Years in existing position	If acting – reason provided
DC16	Xhariep District Municipality					
FS161	Letsemeng Local Municipality					
FS162	Kopanong Local Municipality					
FS163	Mohokare Local Municipality					

Authority - Municipal abattoirs

MDB Code	Municipality Name	Authority for the function	Municipality understood authority	
			Authorised as Answered	Understands
DC16	Xhariep District Municipality	Yes, except for FS163		No
FS161	Letsemeng Local Municipality	Yes		No
FS162	Kopanong Local Municipality	Yes		No
FS163	Mohokare Local Municipality	Yes, including DM function		No

Service Provision - Municipal abattoirs

MDB Code	Municipality Name	Indicated that the municipality performed the function					
		2002	2003	2004	2005	2006	2007
DC16	Xhariep District Municipality	No	No	No	No	No	No
FS161	Letsemeng Local Municipality	No	No	No	No	No	No

FS162	Kopanong Local Municipality	No	No	No	No	No	No
FS163	Mohokare Local Municipality	Yes	No	No	No	No	No

MDB Code	Municipality Name	Municipality makes use of external service provider	Section 78 complete	Service level agreement in place	Municipality makes use of external service provider	Section 78 complete	Service level agreement in place
		2006	2006	2006	2007	2007	2007
DC16	Xhariep District Municipality						
FS161	Letsemeng Local Municipality						
FS162	Kopanong Local Municipality						
FS163	Mohokare Local Municipality						

Budget information – Municipal abattoirs

MDB Code	Municipality Name	Operating Budget for function					
		2002/2003	2003/2004	2004/2005	2005/2006	2006/2007	2007/2008
DC16	Xhariep District Municipality			0	0	0	0
FS161	Letsemeng Local Municipality			0	0	0	0
FS162	Kopanong Local Municipality			0	0	0	0
FS163	Mohokare Local Municipality	21285		0	0	0	0

MDB Code	Municipality Name	Line item or part allocation				
		2003/2004	2004/2005	2005/2006	2006/2007	2007/2008
DC16	Xhariep District Municipality					
FS161	Letsemeng Local Municipality					
FS162	Kopanong Local Municipality					
FS163	Mohokare Local Municipality					

MDB Code	Municipality Name	Per capita budget			
		2004/2005	2005/2006	2006/2007	2007/2008
DC16	Xhariep District Municipality				
FS161	Letsemeng Local Municipality				
FS162	Kopanong Local Municipality				
FS163	Mohokare Local Municipality				

Staffing – Municipal abattoirs

MDB Code	Municipality Name	Staff Available for the function					
		2002	2003	2004	2005	2006	2007
DC16	Xhariep District Municipality			0	0	0	0
FS161	Letsemeng Local Municipality			0	0	0	0

FS162	Kopanong Local Municipality			0	0	0	0
FS163	Mohokare Local Municipality	1		0	0	0	0

MDB Code	Municipality Name	Staff per capita ratio				Staff Vacancies		
		2004	2005	2006	2007	2005	2006	2007
DC16	Xhariep District Municipality							
FS161	Letsemeng Local Municipality							
FS162	Kopanong Local Municipality							
FS163	Mohokare Local Municipality							

Equipment – Municipal abattoirs

MDB Code	Municipality Name	Equipment available for the function					
		2002	2003	2004	2005	2006	2007
DC16	Xhariep District Municipality	No	No	No	No	No	No
FS161	Letsemeng Local Municipality	No	No	No	No	No	No
FS162	Kopanong Local Municipality	No	No	No	No	No	No
FS163	Mohokare Local Municipality	Yes	No	No	No	No	No

Comments and Recommendations – Municipal abattoirs

Comments:

This function is not performed by any of the municipalities.

Recommendation for the adjustment of the function:

No adjustments are recommended by the MDB for the 2007/08 assessment period.

3.30 Municipal parks and recreation

Department rendering the service – Municipal parks and recreation

MDB Code	Municipality Name	Name of Department Performing function	Only department performing function	Name of other department/s performing the function	Description of function performed by municipality
DC16	Xhariep District Municipality				
FS161	Letsemeng Local Municipality	Technical Services	Yes		Maintenance Management of parks
FS162	Kopanong Local Municipality	Community Services	Yes		Management of parks
FS163	Mohokare Local Municipality	Community Services	Yes		

Function Management – Municipal parks and recreation

MDB Code	Municipality Name	Qualification	Years of local Government Experience	Current position Section 57/Acting/Other	Years in existing position	If acting – reason provided
DC16	Xhariep District Municipality					
FS161	Letsemeng Local Municipality	BSc	1	MSA Sec 57	1	

FS162	Kopanong Local Municipality	Cert Labour Law	2	MSA Sec 57	1	
FS163	Mohokare Local Municipality	Diploma - Civil Eng	2	Acting	2	Post to be advertised

Authority - Municipal parks and recreation

MDB Code	Municipality Name	Authority for the function	Municipality understood authority	
			Authorised as Answered	Understands
DC16	Xhariep District Municipality	-		No
FS161	Letsemeng Local Municipality	Yes	Local	Yes
FS162	Kopanong Local Municipality	Yes	Local	Yes
FS163	Mohokare Local Municipality	Yes	Local	Yes

Service Provision - Municipal parks and recreation

MDB Code	Municipality Name	Indicated that the municipality performed the function					
		2002	2003	2004	2005	2006	2007
DC16	Xhariep District Municipality	No	No	No	No	No	No
FS161	Letsemeng Local Municipality	Yes	Yes	Yes	Yes	Yes	Yes
FS162	Kopanong Local Municipality	Yes	Yes	Yes	Yes	Yes	Yes
FS163	Mohokare Local Municipality	Yes	Yes	Yes	Yes	Yes	Yes

MDB Code	Municipality Name	Municipality makes use of external service provider	Section 78 complete	Service level agreement in place	Municipality makes use of external service provider	Section 78 complete	Service level agreement in place
		2006	2006	2006	2007	2007	2007
DC16	Xhariep District Municipality						
FS161	Letsemeng Local Municipality		No	No		No	No
FS162	Kopanong Local Municipality		No	No		No	No
FS163	Mohokare Local Municipality		No	No		No	No

Budget information – Municipal parks and recreation

MDB Code	Municipality Name	Operating Budget for function					
		2002/2003	2003/2004	2004/2005	2005/2006	2006/2007	2007/2008
DC16	Xhariep District Municipality			0	0	0	0
FS161	Letsemeng Local Municipality	500047	222057	720000	187802	205000	290155
FS162	Kopanong Local Municipality	1476621	460925	156000	20000	25000	4401970
FS163	Mohokare Local Municipality	497470	151650	400000	0	0	1100000

MDB Code	Municipality Name	Line item or part allocation				
		2003/2004	2004/2005	2005/2006	2006/2007	2007/2008
DC16	Xhariep District Municipality					
FS161	Letsemeng Local Municipality	Part	Part;	Part;	Part;	Part
FS162	Kopanong Local Municipality	Line	Part;	Line;	Line;	Part
FS163	Mohokare Local Municipality	Part	Part;			Part

MDB Code	Municipality Name	Per capita budget			
		2004/2005	2005/2006	2006/2007	2007/2008
DC16	Xhariep District Municipality				
FS161	Letsemeng Local Municipality	16.75	4.37	4.77	6.75
FS162	Kopanong Local Municipality	2.79	0.36	0.45	78.69
FS163	Mohokare Local Municipality	11.01			30.29

Staffing – Municipal parks and recreation

MDB Code	Municipality Name	Staff Available for the function					
		2002	2003	2004	2005	2006	2007
DC16	Xhariep District Municipality			0	0	0	0
FS161	Letsemeng Local Municipality		10	30	6	11	6
FS162	Kopanong Local Municipality	23	6	13	13	13	45
FS163	Mohokare Local Municipality	5	5	12	8	6	40

MDB Code	Municipality Name	Staff per capita ratio				Staff Vacancies		
		2004	2005	2006	2007	2005	2006	2007
DC16	Xhariep District Municipality							
FS161	Letsemeng Local Municipality	1433	7164	3907	7164			
FS162	Kopanong Local Municipality	4303	4303	4303	1243			
FS163	Mohokare Local Municipality	3027	4540	6054	908	4	6	

Equipment – Municipal parks and recreation

MDB Code	Municipality Name	Equipment available for the function					
		2002	2003	2004	2005	2006	2007
DC16	Xhariep District Municipality	No	No	No	No	No	No
FS161	Letsemeng Local Municipality	No	Yes	Yes	Yes	Yes	Yes
FS162	Kopanong Local Municipality	Yes	Yes	Yes	Yes	Yes	Yes
FS163	Mohokare Local Municipality	Yes	Yes	Yes	No	No	Yes

Comments and Recommendations – Municipal parks and recreation

Comments:

All three local municipalities perform the municipal parks and recreation function. Both FS161 and FS162 have indicated management of parks as a primary role of the function.

All three managers have tertiary qualifications although none has more than two years of local

government experience. None of the managers has been in position for more than two years. There is one acting manager in FS163.

There is budget available for this function in all local municipalities and all show an increase in budget since the previous financial year. Per capita budgets range from R6.75 in FS161 to R78.69 in FS162.

FS162 and FS163 have more staff available for the function than they did in the previous year. There are no staff vacancies.

There is equipment available for the function in all three local municipalities.

In summary:

The local municipalities have capacity to perform this function.

Recommendation for the adjustment of the function:

No adjustments are recommended by the MDB for the 2007/08 assessment period.

3.31 Municipal roads

Department rendering the service – Municipal roads

MDB Code	Municipality Name	Name of Department Performing function	Only department performing function	Name of other department/s performing the function	Description of function performed by municipality
DC16	Xhariep District Municipality				
FS161	Letsemeng Local Municipality	Technical Services	Yes		Construction Maintenance Control of roads
FS162	Kopanong Local Municipality	Community Services	Yes		Road maintenance
FS163	Mohokare Local Municipality	Infrastructure Services	Yes		Road Maintenance

Function Management – Municipal roads

MDB Code	Municipality Name	Qualification	Years of local Government Experience	Current position Section 57/Acting/Other	Years in existing position	If acting – reason provided
DC16	Xhariep District Municipality					
FS161	Letsemeng Local Municipality	BSc	1	MSA Sec 57	1	
FS162	Kopanong Local Municipality	Cert Labour Law	2	MSA Sec 57	1	
FS163	Mohokare Local Municipality	Matric	5	Acting	5	Post to be advertised

Authority - Municipal roads

MDB Code	Municipality Name	Authority for the function	Municipality understood authority	
			Authorised as Answered	Understands
DC16	Xhariep District Municipality	No		No
FS161	Letsemeng Local Municipality	Yes, including DM function	Local	Yes
FS162	Kopanong Local Municipality	Yes, including DM function	Local	Yes
FS163	Mohokare Local Municipality	Yes, including DM function	Local	Yes

Service Provision - Municipal roads

MDB Code	Municipality Name	Indicated that the municipality performed the function					
		2002	2003	2004	2005	2006	2007
DC16	Xhariep District Municipality	No	No	No	No	No	No
FS161	Letsemeng Local Municipality	No	Yes	Yes	Yes	Yes	Yes
FS162	Kopanong Local Municipality	Yes	Yes	Yes	Yes	Yes	Yes
FS163	Mohokare Local Municipality	Yes	Yes	Yes	Yes	Yes	Yes

MDB Code	Municipality Name	Municipality makes use of external service provider	Section 78 complete	Service level agreement in place	Municipality makes use of external service provider	Section 78 complete	Service level agreement in place
		2006	2006	2006	2007	2007	2007
DC16	Xhariep District Municipality						
FS161	Letsemeng Local Municipality		No	No		No	No
FS162	Kopanong Local Municipality		No	No		No	No
FS163	Mohokare Local Municipality		No	No		No	No

Budget information – Municipal roads

MDB Code	Municipality Name	Operating Budget for function					
		2002/2003	2003/2004	2004/2005	2005/2006	2006/2007	2007/2008
DC16	Xhariep District Municipality			0	0	0	0
FS161	Letsemeng Local Municipality	2856014	2339549	1932000	1200000	7502390	6986332
FS162	Kopanong Local Municipality	3794896	4092458	5548577	350000	380000	9856962
FS163	Mohokare Local Municipality	2520929	4092490	300000	245000	330000	543416

MDB Code	Municipality Name	Line item or part allocation				
		2003/2004	2004/2005	2005/2006	2006/2007	2007/2008
DC16	Xhariep District Municipality					
FS161	Letsemeng Local Municipality	Part	Part;	Part;	Part;	Line
FS162	Kopanong Local Municipality	Line	Line;	Line;	Line;	Line
FS163	Mohokare Local Municipality	Line	Part;	Line;	Part;	Line

MDB Code	Municipality Name	Per capita budget			
		2004/2005	2005/2006	2006/2007	2007/2008
DC16	Xhariep District Municipality				
FS161	Letsemeng Local Municipality	44.95	27.92	174.55	162.54
FS162	Kopanong Local Municipality	99.18	6.26	6.79	176.20

FS163	Mohokare Local Municipality	8.26	6.75	9.09	14.96
-------	-----------------------------	------	------	------	-------

Income information – Municipal roads

MDB Code	Operating Income		Function Income as a % of Operation Income	
	Actual 2006/2007	Estimated 2007/2008	2006/2007	2007/2008
DC16		0		0.00%
FS161	3700	6986332	0.01%	15.59%
FS162	6296279	9856962	8.17%	10.93%
FS163		543416		1.35%

Staffing – Municipal roads

MDB Code	Municipality Name	Staff Available for the function					
		2002	2003	2004	2005	2006	2007
DC16	Xhariep District Municipality			0	0	0	0
FS161	Letsemeng Local Municipality		18	16	10	15	10
FS162	Kopanong Local Municipality	49	71	56	50	50	45
FS163	Mohokare Local Municipality		26	11	4	4	40

MDB Code	Municipality Name	Staff per capita ratio				Staff Vacancies		
		2004	2005	2006	2007	2005	2006	2007
DC16	Xhariep District Municipality							
FS161	Letsemeng Local Municipality	2686	4298	2865	4298			
FS162	Kopanong Local Municipality	999	1119	1119	1243			
FS163	Mohokare Local Municipality	3302	9081	9081	908	9		

Equipment – Municipal roads

MDB Code	Municipality Name	Equipment available for the function					
		2002	2003	2004	2005	2006	2007
DC16	Xhariep District Municipality	No	No	No	No	No	No
FS161	Letsemeng Local Municipality	Yes	Yes	Yes	Yes	Yes	Yes
FS162	Kopanong Local Municipality	Yes	Yes	Yes	Yes	Yes	Yes
FS163	Mohokare Local Municipality	Yes	Yes	Yes	Yes	Yes	Yes

Comments and Recommendations – Municipal roads

Comments:

The municipal roads function is performed by all three local municipalities. In addition, all municipalities have a single department managing this function and have indicated maintenance of roads as a primary role of the function. FS161 has also indicated construction of roads.

FS163 has a matric only while the remaining two managers have tertiary qualifications. None has more than five years of local government experience. There is one acting manager in FS163. None of the managers has been in position for more than five years.

All three municipalities have budget available for the function although FS161 has received a

decrease in budget since the previous financial year. Per capita budgets range from R14.96 in FS163 to R176.20 in FS162.

The function contributes to almost 16% of operating income in FS161 and just 1.35% of operating income in FS163.

There is staff available for this function in all of the municipalities although both FS161 and FS162 have had a decrease in staff available since the previous financial year. There are no staff vacancies.

All three local municipalities have equipment available for the function.

In summary:

The local municipalities have capacity to perform this function.

Recommendation for the adjustment of the function:

No adjustments are recommended by the MDB for the 2007/08 assessment period.

3.32 Noise pollution

Department rendering the service – Noise pollution

MDB Code	Municipality Name	Name of Department Performing function	Only department performing function	Name of other department/s performing the function	Description of function performed by municipality
DC16	Xhariep District Municipality				
FS161	Letsemeng Local Municipality				
FS162	Kopanong Local Municipality				
FS163	Mohokare Local Municipality				

Function Management – Noise pollution

MDB Code	Municipality Name	Qualification	Years of local Government Experience	Current position Section 57/Acting/Other	Years in existing position	If acting – reason provided
DC16	Xhariep District Municipality					
FS161	Letsemeng Local Municipality					
FS162	Kopanong Local Municipality					
FS163	Mohokare Local Municipality					

Authority - Noise pollution

MDB Code	Municipality Name	Authority for the function	Municipality understood authority	
			Authorised as Answered	Understands
DC16	Xhariep District Municipality	-		No
FS161	Letsemeng Local Municipality	Yes		No
FS162	Kopanong Local Municipality	Yes		No
FS163	Mohokare Local Municipality	Yes		No

Service Provision - Noise pollution

MDB Code	Municipality Name	Indicated that the municipality performed the function					
		2002	2003	2004	2005	2006	2007
DC16	Xhariep District Municipality	No	No	No	No	No	No
FS161	Letsemeng Local Municipality	No	No	No	No	No	No
FS162	Kopanong Local Municipality	No	No	No	No	No	No
FS163	Mohokare Local Municipality	No	No	No	No	No	No

MDB Code	Municipality Name	Municipality makes use of external service provider	Section 78 complete	Service level agreement in place	Municipality makes use of external service provider	Section 78 complete	Service level agreement in place
		2006	2006	2006	2007	2007	2007
DC16	Xhariep District Municipality						
FS161	Letsemeng Local Municipality						
FS162	Kopanong Local Municipality						
FS163	Mohokare Local Municipality						

Budget information – Noise pollution

MDB Code	Municipality Name	Operating Budget for function					
		2002/2003	2003/2004	2004/2005	2005/2006	2006/2007	2007/2008
DC16	Xhariep District Municipality			0	0	0	0
FS161	Letsemeng Local Municipality			0	0	0	0
FS162	Kopanong Local Municipality			0	0	0	0
FS163	Mohokare Local Municipality	0		0	0	0	0

MDB Code	Municipality Name	Line item or part allocation				
		2003/2004	2004/2005	2005/2006	2006/2007	2007/2008
DC16	Xhariep District Municipality					
FS161	Letsemeng Local Municipality					
FS162	Kopanong Local Municipality					
FS163	Mohokare Local Municipality					

MDB Code	Municipality Name	Per capita budget			
		2004/2005	2005/2006	2006/2007	2007/2008
DC16	Xhariep District Municipality				
FS161	Letsemeng Local Municipality				
FS162	Kopanong Local Municipality				

FS163	Mohokare Local Municipality				
-------	-----------------------------	--	--	--	--

Staffing – Noise pollution

MDB Code	Municipality Name	Staff Available for the function					
		2002	2003	2004	2005	2006	2007
DC16	Xhariep District Municipality			0	0	0	0
FS161	Letsemeng Local Municipality			0	0	0	0
FS162	Kopanong Local Municipality			0	0	0	0
FS163	Mohokare Local Municipality	1		0	0	0	0

MDB Code	Municipality Name	Staff per capita ratio				Staff Vacancies		
		2004	2005	2006	2007	2005	2006	2007
DC16	Xhariep District Municipality							
FS161	Letsemeng Local Municipality							
FS162	Kopanong Local Municipality							
FS163	Mohokare Local Municipality							

Equipment – Noise pollution

MDB Code	Municipality Name	Equipment available for the function					
		2002	2003	2004	2005	2006	2007
DC16	Xhariep District Municipality	No	No	No	No	No	No
FS161	Letsemeng Local Municipality	No	No	No	No	No	No
FS162	Kopanong Local Municipality	No	No	No	No	No	No
FS163	Mohokare Local Municipality	No	No	No	No	No	No

Comments and Recommendations – Noise pollution

Comments:

This function is not performed by any of the municipalities.

Recommendation for the adjustment of the function:

No adjustments are recommended by the MDB for the 2007/08 assessment period.

3.33 Pounds

Department rendering the service – Pounds

MDB Code	Municipality Name	Name of Department Performing function	Only department performing function	Name of other department/s performing the function	Description of function performed by municipality
DC16	Xhariep District Municipality				
FS161	Letsemeng Local Municipality	Technical Services	Yes		Maintenance of commonages Pounding of animals
FS162	Kopanong Local Municipality				
FS163	Mohokare Local Municipality	Community Services	Yes		Inspection and maintenance of pounds

Function Management – Pounds

MDB Code	Municipality Name	Qualification	Years of local Government Experience	Current position Section 57/Acting/Other	Years in existing position	If acting – reason provided
DC16	Xhariep District Municipality					
FS161	Letsemeng Local Municipality	BSc	1	MSA Sec 57	1	
FS162	Kopanong Local Municipality					
FS163	Mohokare Local Municipality	Diploma - Civil Eng	2	Acting	2	Post to be advertised

Authority - Pounds

MDB Code	Municipality Name	Authority for the function	Municipality understood authority	
			Authorised as Answered	Understands
DC16	Xhariep District Municipality	-		No
FS161	Letsemeng Local Municipality	Yes	Local	Yes
FS162	Kopanong Local Municipality	Yes		No
FS163	Mohokare Local Municipality	Yes	Local	Yes

Service Provision - Pounds

MDB Code	Municipality Name	Indicated that the municipality performed the function					
		2002	2003	2004	2005	2006	2007
DC16	Xhariep District Municipality	No	No	No	No	No	No
FS161	Letsemeng Local Municipality	Yes	Yes	Yes	Yes	Yes	Yes
FS162	Kopanong Local Municipality	No	Yes	No	Yes	Yes	No
FS163	Mohokare Local Municipality	Yes	Yes	Yes	Yes	Yes	Yes

MDB Code	Municipality Name	Municipality makes use of external service provider	Section 78 complete	Service level agreement in place	Municipality makes use of external service provider	Section 78 complete	Service level agreement in place
		2006	2006	2006	2007	2007	2007
DC16	Xhariep District Municipality						
FS161	Letsemeng Local Municipality		No	No		No	No
FS162	Kopanong Local Municipality			No			
FS163	Mohokare Local Municipality		No	No		No	No

Budget information – Pounds

MDB Code	Municipality Name	Operating Budget for function					
		2002/2003	2003/2004	2004/2005	2005/2006	2006/2007	2007/2008
DC16	Xhariep District Municipality			0	0	0	0
FS161	Letsemeng Local Municipality	1600	1600	1600	60000	238250	2381895
FS162	Kopanong Local Municipality		15000	0	100000	110000	0
FS163	Mohokare Local Municipality	23920	21000	9613	503000	550000	40153031

MDB Code	Municipality Name	Line item or part allocation				
		2003/2004	2004/2005	2005/2006	2006/2007	2007/2008
DC16	Xhariep District Municipality					
FS161	Letsemeng Local Municipality	Part	Part;	Part;	Part;	Part
FS162	Kopanong Local Municipality	Part		Line;	Line;	
FS163	Mohokare Local Municipality	Line	Line;	Line;	Part;	Part

MDB Code	Municipality Name	Per capita budget			
		2004/2005	2005/2006	2006/2007	2007/2008
DC16	Xhariep District Municipality				
FS161	Letsemeng Local Municipality	0.04	1.40	5.54	55.42
FS162	Kopanong Local Municipality		1.79	1.97	
FS163	Mohokare Local Municipality	0.26	13.85	15.14	1105.57

Staffing – Pounds

MDB Code	Municipality Name	Staff Available for the function					
		2002	2003	2004	2005	2006	2007
DC16	Xhariep District Municipality			0	0	0	0
FS161	Letsemeng Local Municipality	2	8	5	5	6	1
FS162	Kopanong Local Municipality		2	0	0	2	0
FS163	Mohokare Local Municipality	2	2	0	2	2	1

MDB Code	Municipality Name	Staff per capita ratio				Staff Vacancies		
		2004	2005	2006	2007	2005	2006	2007
DC16	Xhariep District Municipality							
FS161	Letsemeng Local Municipality	8596	8596	7164	42981			
FS162	Kopanong Local Municipality			27973				
FS163	Mohokare Local Municipality		18161	18161	36319	1	1	2

Equipment – Pounds

MDB Code	Municipality Name	Equipment available for the function					
		2002	2003	2004	2005	2006	2007
DC16	Xhariep District Municipality	No	No	No	No	No	No
FS161	Letsemeng Local Municipality	No	No	Yes	Yes	Yes	Yes

FS162	Kopanong Local Municipality	No	No	No	No	Yes	No
FS163	Mohokare Local Municipality	Yes	Yes	Yes	Yes	No	Yes

Comments and Recommendations – Pounds

Comments:

FS161 and FS163 perform this function. Both manage it from a single department and have indicated maintenance as one of the key aspects of the function.

Both managers have tertiary qualifications and the manager in FS163 is in an acting position. Both appear to have been recent appointments with the manager for FS163 having been in position the longest, at two years.

Both municipalities have budget available to perform the function and show an increase since the previous financial year. Per capita budgets range from R55.42 in FS161 to R1105.57 in FS163.

FS161 and FS163 each have one staff member available to perform the function and there are two staff vacancies in FS163.

Both municipalities have equipment available for the function.

In summary:

FS161 and FS163 have capacity to perform this function.

Recommendation for the adjustment of the function:

No adjustments are recommended by the MDB for the 2007/08 assessment period.

3.34 Public places

Department rendering the service – Public places

MDB Code	Municipality Name	Name of Department Performing function	Only department performing function	Name of other department/s performing the function	Description of function performed by municipality
DC16	Xhariep District Municipality				
FS161	Letsemeng Local Municipality	Technical Services	Yes		Control and maintenance of public space
FS162	Kopanong Local Municipality	Community Services	Yes		Management and maintenance of public places
FS163	Mohokare Local Municipality	Community Services	Yes		Maintenance and management of public places

Function Management – Public places

MDB Code	Municipality Name	Qualification	Years of local Government Experience	Current position Section 57/Acting/Other	Years in existing position	If acting – reason provided
DC16	Xhariep District Municipality					
FS161	Letsemeng Local Municipality	BSc	1	MSA Sec 57	1	
FS162	Kopanong Local Municipality	Cert Labour Law	2	MSA Sec 57	1	
FS163	Mohokare Local Municipality	Diploma - Civil Eng	2	Acting	2	Post to be advertised

Authority - Public places

MDB Code	Municipality Name	Authority for the function	Municipality understood authority	
			Authorised as Answered	Understands
DC16	Xhariep District Municipality	-		No
FS161	Letsemeng Local Municipality	Yes	Local	Yes
FS162	Kopanong Local Municipality	Yes	Local	Yes
FS163	Mohokare Local Municipality	Yes	Local	Yes

Service Provision - Public places

MDB Code	Municipality Name	Indicated that the municipality performed the function					
		2002	2003	2004	2005	2006	2007
DC16	Xhariep District Municipality	No	No	No	No	No	No
FS161	Letsemeng Local Municipality	No	Yes	No	Yes	Yes	Yes
FS162	Kopanong Local Municipality	No	No	No	Yes	Yes	Yes
FS163	Mohokare Local Municipality	Yes	Yes	No	Yes	Yes	Yes

MDB Code	Municipality Name	Municipality makes use of external service provider	Section 78 complete	Service level agreement in place	Municipality makes use of external service provider	Section 78 complete	Service level agreement in place
		2006	2006	2006	2007	2007	2007
DC16	Xhariep District Municipality						
FS161	Letsemeng Local Municipality		No	No		No	No
FS162	Kopanong Local Municipality		No	No		No	No
FS163	Mohokare Local Municipality		No	No		No	No

Budget information – Public places

MDB Code	Municipality Name	Operating Budget for function					
		2002/2003	2003/2004	2004/2005	2005/2006	2006/2007	2007/2008
DC16	Xhariep District Municipality			0	0	0	0
FS161	Letsemeng Local Municipality		52540	0	700000	770000	2381895
FS162	Kopanong Local Municipality			0	441000	400000	4401970
FS163	Mohokare Local Municipality		212600	0	391730	420000	40153031

MDB Code	Municipality Name	Line item or part allocation				
		2003/2004	2004/2005	2005/2006	2006/2007	2007/2008
DC16	Xhariep District Municipality					
FS161	Letsemeng Local Municipality	Line		Part;	Part;	Part
FS162	Kopanong Local Municipality			Line;	Line;	Part

FS163	Mohokare Local Municipality	Line		Line;	Part;	Part
-------	-----------------------------	------	--	-------	-------	------

MDB Code	Municipality Name	Per capita budget			
		2004/2005	2005/2006	2006/2007	2007/2008
DC16	Xhariep District Municipality				
FS161	Letsemeng Local Municipality		16.29	17.91	55.42
FS162	Kopanong Local Municipality		7.88	7.15	78.69
FS163	Mohokare Local Municipality		10.78	11.56	1105.57

Staffing – Public places

MDB Code	Municipality Name	Staff Available for the function					
		2002	2003	2004	2005	2006	2007
DC16	Xhariep District Municipality			0	0	0	0
FS161	Letsemeng Local Municipality		10	0	0	11	1
FS162	Kopanong Local Municipality			0	65	65	45
FS163	Mohokare Local Municipality		2	0	1	6	40

MDB Code	Municipality Name	Staff per capita ratio				Staff Vacancies		
		2004	2005	2006	2007	2005	2006	2007
DC16	Xhariep District Municipality							
FS161	Letsemeng Local Municipality			3907	42981			
FS162	Kopanong Local Municipality		861	861	1243			
FS163	Mohokare Local Municipality		36322	6054	908		3	

Equipment – Public places

MDB Code	Municipality Name	Equipment available for the function					
		2002	2003	2004	2005	2006	2007
DC16	Xhariep District Municipality	No	No	No	No	No	No
FS161	Letsemeng Local Municipality	No	Yes	No	Yes	Yes	Yes
FS162	Kopanong Local Municipality	No	No	No	Yes	Yes	Yes
FS163	Mohokare Local Municipality	No	Yes	No	Yes	No	Yes

Comments and Recommendations – Public places

Comments:

All three local municipalities perform the public places function. Each uses a single department to do so and have indicated management and maintenance as key aspects of the function.

All three managers have tertiary qualifications although none has more than two years of local government experience. There is one acting manager in FS163. None of the managers has been in position for more than two years.

There is budget available for this function in all three local municipalities. These show an increase from the previous financial year. Per capita budgets range from R55.42 in FS161 to R1105.57 in FS163.

There are staff available for the function although only FS163 has had an increase in staff available since the previous financial year.

All three local municipalities have equipment available for the function.

In summary:

The local municipalities have capacity to perform this function.

Recommendation for the adjustment of the function:

No adjustments are recommended by the MDB for the 2007/08 assessment period.

3.35 Refuse removal, refuse dumps and solid waste disposal

Department rendering the service – Refuse removal, refuse dumps and solid waste disposal

MDB Code	Municipality Name	Name of Department Performing function	Only department performing function	Name of other department/s performing the function	Description of function performed by municipality
DC16	Xhariep District Municipality				
FS161	Letsemeng Local Municipality	Technical Services	Yes		Refuse removal
FS162	Kopanong Local Municipality	Community Services	Yes		Manage refuse dumps Management of refuse removal
FS163	Mohokare Local Municipality	Community Services	Yes		Removal of solid waste from households and businesses

Function Management – Refuse removal, refuse dumps and solid waste disposal

MDB Code	Municipality Name	Qualification	Years of local Government Experience	Current position Section 57/Acting/Other	Years in existing position	If acting – reason provided
DC16	Xhariep District Municipality					
FS161	Letsemeng Local Municipality	BSc	1	MSA Sec 57	1	
FS162	Kopanong Local Municipality	Cert Labour Law	2	MSA Sec 57	1	
FS163	Mohokare Local Municipality	Diploma - Civil Eng	2	Acting	2	Post to be advertised

Authority - Refuse removal, refuse dumps and solid waste disposal

MDB Code	Municipality Name	Authority for the function	Authorised as Answered	Understands
DC16	Xhariep District Municipality	No		No
FS161	Letsemeng Local Municipality	Yes, including DM function	Local	Yes
FS162	Kopanong Local Municipality	Yes, including DM function	Local	Yes
FS163	Mohokare Local Municipality	Yes, including DM function	Local	Yes

Service Provision - Refuse removal, refuse dumps and solid waste disposal

MDB Code	Municipality Name	Indicated that the municipality performed the function					
		2002	2003	2004	2005	2006	2007
DC16	Xhariep District Municipality	No	No	No	No	No	No
FS161	Letsemeng Local Municipality	Yes	Yes	Yes	Yes	Yes	Yes
FS162	Kopanong Local Municipality	Yes	Yes	Yes	Yes	Yes	Yes
FS163	Mohokare Local Municipality	Yes	Yes	Yes	Yes	Yes	Yes

MDB Code	Municipality Name	Municipality makes use of external service provider	Section 78 complete	Service level agreement in place	Municipality makes use of external service provider	Section 78 complete	Service level agreement in place
		2006	2006	2006	2007	2007	2007
DC16	Xhariep District Municipality						
FS161	Letsemeng Local Municipality		No	No		No	No
FS162	Kopanong Local Municipality		No	No		No	No
FS163	Mohokare Local Municipality		No	No		No	No

Budget information – Refuse removal, refuse dumps and solid waste disposal

MDB Code	Municipality Name	Operating Budget for function					
		2002/2003	2003/2004	2004/2005	2005/2006	2006/2007	2007/2008
DC16	Xhariep District Municipality			0	0	0	0
FS161	Letsemeng Local Municipality	2988573	4156802	3853190	4279571	4388441	6381287
FS162	Kopanong Local Municipality	2444387	5016143	889230	3183181	3176593	3520914
FS163	Mohokare Local Municipality	1632000	4183058	3119849	3900000	3850952	4263103

MDB Code	Municipality Name	Line item or part allocation				
		2003/2004	2004/2005	2005/2006	2006/2007	2007/2008
DC16	Xhariep District Municipality					
FS161	Letsemeng Local Municipality	Line	Line;	Part;	Line;	Line
FS162	Kopanong Local Municipality	Line	Part;	Line;	Line;	Line
FS163	Mohokare Local Municipality	Line	Line;	Line;	Line;	Line

MDB Code	Municipality Name	Per capita budget			
		2004/2005	2005/2006	2006/2007	2007/2008
DC16	Xhariep District Municipality				
FS161	Letsemeng Local Municipality	89.65	99.57	102.10	148.47
FS162	Kopanong Local Municipality	15.89	56.90	56.78	62.94
FS163	Mohokare Local Municipality	85.89	107.37	106.02	117.38

Income information – Refuse removal, refuse dumps and solid waste disposal

MDB Code	Operating Income		Function Income as a % of Operation Income	
	Actual 2006/2007	Estimated 2007/2008	2006/2007	2007/2008
DC16		0		0.00%
FS161	6720412	6381287	18.33%	14.24%
FS162	7459094	3520914	9.67%	3.90%
FS163	187700	4263103	0.47%	10.62%

Staffing – Refuse removal, refuse dumps and solid waste disposal

MDB Code	Municipality Name	Staff Available for the function					
		2002	2003	2004	2005	2006	2007
DC16	Xhariep District Municipality			0	0	0	0
FS161	Letsemeng Local Municipality	20	12	8	0	15	6
FS162	Kopanong Local Municipality	49	47	45	48	48	45
FS163	Mohokare Local Municipality	95	30	44	18	18	40

MDB Code	Municipality Name	Staff per capita ratio				Staff Vacancies		
		2004	2005	2006	2007	2005	2006	2007
DC16	Xhariep District Municipality							
FS161	Letsemeng Local Municipality	5373		2865	7164			
FS162	Kopanong Local Municipality	1243	1166	1166	1243			
FS163	Mohokare Local Municipality	826	2018	2018	908	14	15	

Equipment – Refuse removal, refuse dumps and solid waste disposal

MDB Code	Municipality Name	Equipment available for the function					
		2002	2003	2004	2005	2006	2007
DC16	Xhariep District Municipality	Yes	No	No	No	No	No
FS161	Letsemeng Local Municipality	Yes	Yes	Yes	Yes	Yes	Yes
FS162	Kopanong Local Municipality	Yes	No	Yes	Yes	Yes	Yes
FS163	Mohokare Local Municipality	Yes	Yes	Yes	Yes	Yes	Yes

Comments and Recommendations – Refuse removal, refuse dumps and solid waste disposal**Comments:**

The refuse removal function is performed by all three local municipalities. In addition, each municipality performs this function from a single department and appears to render the correct aspects of the function.

All three managers have tertiary qualifications although none has more than two years of local government experience. There is one acting manager in FS163. None of the managers has been in position for more than two years.

There is budget available for this function in all of the local municipalities and all show an increase in budget available since the previous financial year. Per capita budgets range from R62.94 in FS162 to R148.47 in FS161.

The refuse removal function contributes to over 14% of operating income in FS161 and just 3.9% of operating income in FS162.

All three municipalities have staff available for the function although FS163 is the only municipality that has had an increase in staff available since the previous financial year. There are no staff vacancies.

There is equipment available in all of the local municipalities for this function.

In summary:

The local municipalities have capacity to perform this function.

Recommendation for the adjustment of the function:

No adjustments are recommended by the MDB for the 2007/08 assessment period.

3.36 Street trading

Department rendering the service – Street trading

MDB Code	Municipality Name	Name of Department Performing function	Only department performing function	Name of other department/s performing the function	Description of function performed by municipality
DC16	Xhariep District Municipality				
FS161	Letsemeng Local Municipality	Tehnicl Services	Yes		
FS162	Kopanong Local Municipality				
FS163	Mohokare Local Municipality	Community Services	Yes		Inspection of sites

Function Management – Street trading

MDB Code	Municipality Name	Qualification	Years of local Government Experience	Current position Section 57/Acting/Other	Years in existing position	If acting – reason provided
DC16	Xhariep District Municipality					
FS161	Letsemeng Local Municipality	BSc (Maths)	1	MSA Sec 57	1	
FS162	Kopanong Local Municipality					
FS163	Mohokare Local Municipality	Diploma - Civil Eng	2	Acting	2	Post to be advertised

Authority - Street trading

MDB Code	Municipality Name	Authority for the function	Municipality understood authority	
			Authorised as Answered	Understands
DC16	Xhariep District Municipality	-		No
FS161	Letsemeng Local Municipality	Yes	Local	Yes
FS162	Kopanong Local Municipality	Yes		No
FS163	Mohokare Local Municipality	Yes	Local	Yes

Service Provision - Street trading

MDB Code	Municipality Name	Indicated that the municipality performed the function					
		2002	2003	2004	2005	2006	2007
DC16	Xhariep District Municipality	No	No	No	No	No	No
FS161	Letsemeng Local Municipality	No	Yes	No	Yes	Yes	Yes
FS162	Kopanong Local Municipality	No	Yes	No	No	No	No
FS163	Mohokare Local Municipality	Yes	No	No	Yes	Yes	Yes

MDB Code	Municipality Name	Municipality makes use of external service provider	Section 78 complete	Service level agreement in place	Municipality makes use of external service provider	Section 78 complete	Service level agreement in place
		2006	2006	2006	2007	2007	2007
DC16	Xhariep District Municipality						
FS161	Letsemeng Local Municipality		No	No		No	No
FS162	Kopanong Local Municipality						
FS163	Mohokare Local Municipality		No	No		No	No

Budget information – Street trading

MDB Code	Municipality Name	Operating Budget for function					
		2002/2003	2003/2004	2004/2005	2005/2006	2006/2007	2007/2008
DC16	Xhariep District Municipality			0	0	0	0
FS161	Letsemeng Local Municipality		10400	0	221727	250000	0
FS162	Kopanong Local Municipality		266491	0	0	0	0
FS163	Mohokare Local Municipality			0	4000	5000	40153031

MDB Code	Municipality Name	Line item or part allocation				
		2003/2004	2004/2005	2005/2006	2006/2007	2007/2008
DC16	Xhariep District Municipality					
FS161	Letsemeng Local Municipality	Part		Part;	Part;	
FS162	Kopanong Local Municipality	Part				
FS163	Mohokare Local Municipality			Part;	Part;	Part

MDB Code	Municipality Name	Per capita budget			
		2004/2005	2005/2006	2006/2007	2007/2008
DC16	Xhariep District Municipality				
FS161	Letsemeng Local Municipality		5.16	5.82	
FS162	Kopanong Local Municipality				
FS163	Mohokare Local Municipality		0.11	0.14	1105.57

Staffing – Street trading

MDB Code	Municipality Name	Staff Available for the function					
		2002	2003	2004	2005	2006	2007
DC16	Xhariep District Municipality			0	0	0	0
FS161	Letsemeng Local Municipality		1	0	0	1	1
FS162	Kopanong Local Municipality			0	0	0	0
FS163	Mohokare Local Municipality	2		0	1	1	1

MDB Code	Municipality Name	Staff per capita ratio				Staff Vacancies		
		2004	2005	2006	2007	2005	2006	2007
DC16	Xhariep District Municipality							
FS161	Letsemeng Local Municipality			42981	42981			
FS162	Kopanong Local Municipality							
FS163	Mohokare Local Municipality		36322	36322	36319		1	2

Equipment – Street trading

MDB Code	Municipality Name	Equipment available for the function					
		2002	2003	2004	2005	2006	2007
DC16	Xhariep District Municipality	No	No	No	No	No	No
FS161	Letsemeng Local Municipality	No	Yes	No	Yes	Yes	Yes
FS162	Kopanong Local Municipality	No	No	No	No	No	No
FS163	Mohokare Local Municipality	No	No	No	No	No	Yes

Comments and Recommendations – Street trading**Comments:**

FS161 and FS163 perform this function. FS163 has indicated the inspection of sites as the primary role of this function.

Both managers have tertiary qualifications and the manager in FS163 is in an acting position. Both appear to have been recent appointments with the manager for FS163 having been in position the longest, at two years.

FS163 has budget available to perform the function and shows an increase since the previous financial year.

FS161 and FS163 each have one staff member available to perform the function and there are two staff vacancies in FS163.

Both municipalities have equipment available for the function.

In summary:

FS161 and FS163 have capacity to perform this function.

Recommendation for the adjustment of the function:

No adjustments are recommended by the MDB for the 2007/08 assessment period.

3.37 Street lighting

Department rendering the service – Street lighting

MDB Code	Municipality Name	Name of Department Performing function	Only department performing function	Name of other department/s performing the function	Description of function performed by municipality
DC16	Xhariep District Municipality				
FS161	Letsemeng Local Municipality	Technical Services	Yes		Maintenance and provision of street lights
FS162	Kopanong Local Municipality	Technical Services	Yes		Maintenance and upgrading of street lighting
FS163	Mohokare Local Municipality	Infrastructure Services	Yes		

Function Management – Street lighting

MDB Code	Municipality Name	Qualification	Years of local Government Experience	Current position Section 57/Acting/Other	Years in existing position	If acting – reason provided
DC16	Xhariep District Municipality					
FS161	Letsemeng Local Municipality	Electrical Diploma	11	Permanent	11	
FS162	Kopanong Local Municipality	Nat Dip Law	8	MSA Sec 57	5	
FS163	Mohokare Local Municipality	Matric	5	Acting	5	Post to be advertised

Authority - Street lighting

MDB Code	Municipality Name	Authority for the function	Municipality understood authority	
			Authorised as Answered	Understands
DC16	Xhariep District Municipality	-		No
FS161	Letsemeng Local Municipality	Yes	Local	Yes
FS162	Kopanong Local Municipality	Yes	Local	Yes
FS163	Mohokare Local Municipality	Yes	Local	Yes

Service Provision - Street lighting

MDB Code	Municipality Name	Indicated that the municipality performed the function					
		2002	2003	2004	2005	2006	2007
DC16	Xhariep District Municipality	No	No	No	No	No	No
FS161	Letsemeng Local Municipality	No	Yes	Yes	Yes	Yes	No
FS162	Kopanong Local Municipality	Yes	No	No	Yes	No	No
FS163	Mohokare Local Municipality	No	No	Yes	Yes	Yes	No

MDB Code	Municipality Name	Municipality makes use of external service provider	Section 78 complete	Service level agreement in place	Municipality makes use of external service provider	Section 78 complete	Service level agreement in place
		2006	2006	2006	2007	2007	2007
DC16	Xhariep District Municipality						
FS161	Letsemeng Local Municipality		No	No	Eskom	Yes	Yes
FS162	Kopanong Local Municipality	Centlec	Yes	Yes	Centlec	Yes	Yes
FS163	Mohokare Local Municipality	Centlec and Eskom	No	Yes	Centlec Eskom	Yes	Yes

Budget information – Street lighting

MDB Code	Municipality Name	Operating Budget for function					
		2002/2003	2003/2004	2004/2005	2005/2006	2006/2007	2007/2008
DC16	Xhariep District Municipality			0	0	0	0
FS161	Letsemeng Local Municipality		95000	290000	140000	140000	8108444
FS162	Kopanong Local Municipality	10789470		0	100010	11000	116810
FS163	Mohokare Local Municipality		3921820	63740	0	0	480000

MDB Code	Municipality Name	Line item or part allocation				
		2003/2004	2004/2005	2005/2006	2006/2007	2007/2008
DC16	Xhariep District Municipality					
FS161	Letsemeng Local Municipality	Part	Part;	Line;	Part;	Part
FS162	Kopanong Local Municipality			Line;	Line;	Part
FS163	Mohokare Local Municipality	Line	Part;			Part

MDB Code	Municipality Name	Per capita budget			
		2004/2005	2005/2006	2006/2007	2007/2008
DC16	Xhariep District Municipality				
FS161	Letsemeng Local Municipality	6.75	3.26	3.26	188.65
FS162	Kopanong Local Municipality		1.79	0.20	2.09
FS163	Mohokare Local Municipality	1.75			13.22

Staffing – Street lighting

MDB Code	Municipality Name	Staff Available for the function					
		2002	2003	2004	2005	2006	2007
DC16	Xhariep District Municipality			0	0	0	0
FS161	Letsemeng Local Municipality		3	8	5	5	7
FS162	Kopanong Local Municipality	6		0	0	1	1
FS163	Mohokare Local Municipality	3	4	1	0	0	3

MDB Code	Municipality Name	Staff per capita ratio				Staff Vacancies		
		2004	2005	2006	2007	2005	2006	2007
DC16	Xhariep District Municipality							
FS161	Letsemeng Local Municipality	5373	8596	8596	6140			
FS162	Kopanong Local Municipality			55945	55941			
FS163	Mohokare Local Municipality	36322			12106			3

Equipment – Street lighting

MDB Code	Municipality Name	Equipment available for the function					
		2002	2003	2004	2005	2006	2007
DC16	Xhariep District Municipality	No	No	No	No	No	No
FS161	Letsemeng Local Municipality	No	Yes	Yes	Yes	Yes	Yes
FS162	Kopanong Local Municipality	Yes	No	No	Yes	Yes	Yes
FS163	Mohokare Local Municipality	Yes	Yes	Yes	No	No	Yes

Comments and Recommendations – Street lighting

Comments:

All three local municipalities perform the street lighting function. FS161 and FS162 have indicated maintenance and provision of street lights as the primary role of the function.

The manager in FS163 has a matric only and is in an acting position. The other two managers have tertiary qualifications and more than eight years of local government experience. The manager for FS161 has been in position the longest, at 11 years while the manager in FS162 has been in position for five years.

All three local municipalities have budget available for the function and all show increases since the previous financial year. Per capita budgets range from R2.09 in FS162 to R188.65 in FS161.

There is staff available to perform the function in each municipality. FS163 has three staff vacancies.

All three local municipalities have equipment available to perform the function.

In summary:

The local municipalities have capacity to perform this function.

Recommendation for the adjustment of the function:

No adjustments are recommended by the MDB for the 2007/08 assessment period.

3.38 Traffic and parking

Department rendering the service – Traffic and parking

MDB Code	Municipality Name	Name of Department Performing function	Only department performing function	Name of other department/s performing the function	Description of function performed by municipality
DC16	Xhariep District Municipality				
FS161	Letsemeng Local Municipality	Technical Services	No	Administration	Control Regulation
FS162	Kopanong Local Municipality	Community Services	Yes		Traffic Law Enforcement
FS163	Mohokare Local Municipality	Community Services	Yes		Traffic Management Parking Enforcement

Function Management – Traffic and parking

MDB Code	Municipality Name	Qualification	Years of local Government Experience	Current position Section 57/Acting/Other	Years in existing position	If acting – reason provided
DC16	Xhariep District Municipality					
FS161	Letsemeng Local Municipality	BSc	1	MSA Sec 57	1	
FS162	Kopanong Local Municipality	Cert Labour Law	2	MSA Sec 57	1	
FS163	Mohokare Local Municipality	Diploma - Traffic	13	Permanent	7	

Authority - Traffic and parking

MDB Code	Municipality Name	Authority for the function	Municipality understood authority	
			Authorised as Answered	Understands
DC16	Xhariep District Municipality	-		No
FS161	Letsemeng Local Municipality	Yes	Local	Yes
FS162	Kopanong Local Municipality	Yes	Local	Yes
FS163	Mohokare Local Municipality	Yes	Local	Yes

Service Provision - Traffic and parking

MDB Code	Municipality Name	Indicated that the municipality performed the function					
		2002	2003	2004	2005	2006	2007
DC16	Xhariep District Municipality	No	No	No	No	No	No
FS161	Letsemeng Local Municipality	No	No	No	Yes	Yes	Yes
FS162	Kopanong Local Municipality	No	No	No	Yes	Yes	Yes
FS163	Mohokare Local Municipality	Yes	Yes	Yes	Yes	Yes	Yes

MDB Code	Municipality Name	Municipality makes use of external service provider	Section 78 complete	Service level agreement in place	Municipality makes use of external service provider	Section 78 complete	Service level agreement in place
		2006	2006	2006	2007	2007	2007
DC16	Xhariep District Municipality						
FS161	Letsemeng Local Municipality		No	No		No	No
FS162	Kopanong Local Municipality		No	No		No	No
FS163	Mohokare Local Municipality		No	No		No	No

Budget information – Traffic and parking

MDB Code	Municipality Name	Operating Budget for function

		2002/2003	2003/2004	2004/2005	2005/2006	2006/2007	2007/2008
DC16	Xhariep District Municipality			0	0	0	0
FS161	Letsemeng Local Municipality			0	90344	238000	684800
FS162	Kopanong Local Municipality			0	0	115000	0
FS163	Mohokare Local Municipality		174855	120583	121341.51	375180.8	1000000

MDB Code	Municipality Name	Line item or part allocation				
		2003/2004	2004/2005	2005/2006	2006/2007	2007/2008
DC16	Xhariep District Municipality					
FS161	Letsemeng Local Municipality			Part;	Line;	Line
FS162	Kopanong Local Municipality				Part;	
FS163	Mohokare Local Municipality	Line	Line;	Line;	Line;	Part

MDB Code	Municipality Name	Per capita budget			
		2004/2005	2005/2006	2006/2007	2007/2008
DC16	Xhariep District Municipality				
FS161	Letsemeng Local Municipality		2.10	5.54	15.93
FS162	Kopanong Local Municipality			2.06	
FS163	Mohokare Local Municipality	3.32	3.34	10.33	27.53

Staffing – Traffic and parking

MDB Code	Municipality Name	Staff Available for the function					
		2002	2003	2004	2005	2006	2007
DC16	Xhariep District Municipality			0	0	0	0
FS161	Letsemeng Local Municipality			0	0	3	5
FS162	Kopanong Local Municipality			0	3	3	2
FS163	Mohokare Local Municipality	2	1	0	1	3	1

MDB Code	Municipality Name	Staff per capita ratio				Staff Vacancies		
		2004	2005	2006	2007	2005	2006	2007
DC16	Xhariep District Municipality							
FS161	Letsemeng Local Municipality			14327	8596			
FS162	Kopanong Local Municipality		18648	18648	27971			1
FS163	Mohokare Local Municipality		36322	12107	36319	1	2	2

Equipment – Traffic and parking

MDB Code	Municipality Name	Equipment available for the function					
		2002	2003	2004	2005	2006	2007
DC16	Xhariep District Municipality	No	No	No	No	No	No
FS161	Letsemeng Local Municipality	No	No	No	Yes	Yes	Yes
FS162	Kopanong Local Municipality	No	No	No	No	Yes	Yes

FS163	Mohokare Local Municipality	Yes	Yes	Yes	No	No	Yes
-------	-----------------------------	-----	-----	-----	----	----	-----

Comments and Recommendations – Traffic and parking

Comments:

All three local municipalities perform the street lighting function and all municipalities seem to render the correct aspects of the function.

All three managers have tertiary qualifications. Local government experience ranges from 1 year in FS161 to 13 years in FS163. The manager for FS163 has been in position the longest, at 7 years while both of the other managers have been in position for one year.

FS162 does not have budget available for the function. FS161 and FS163 show increases in budget available since the previous financial year. Per capita budgets range from R15.93 in FS161 to R27.53 in FS163.

There is staff available to perform the function in each local municipality. FS162 and FS163 have one and two staff vacancies respectively.

All three local municipalities have equipment available to perform the function.

In summary:

The local municipalities have capacity to perform this function.

Recommendation for the adjustment of the function:

No adjustments are recommended by the MDB for the 2007/08 assessment period.

4. ADDITIONAL FUNCTIONS PERFORMED

MDB Code	Municipality Name	Function	Budget allocation	Staff	Assigned By
DC16	Xhariep District Municipality	Monitoring of refuse and waste disposal sites		1	
FS161	Letsemeng Local Municipality	Library x 5	R 1 100 000	7	National
FS161	Letsemeng Local Municipality	Unfunded Mandates			
FS161	Letsemeng Local Municipality	Environmental x 1	R 270 000 000	1	District
FS161	Letsemeng Local Municipality	Health Officer			

Comments

DC16 performs one additional function – Monitoring of refuse and waste disposal sites, for which it has one available staff member. No budget has been indicated for this.

FS161 performs four additional functions including libraries, unfunded mandates, environmental and a health officer. It has budget and staff available for the libraries and environmental functions.

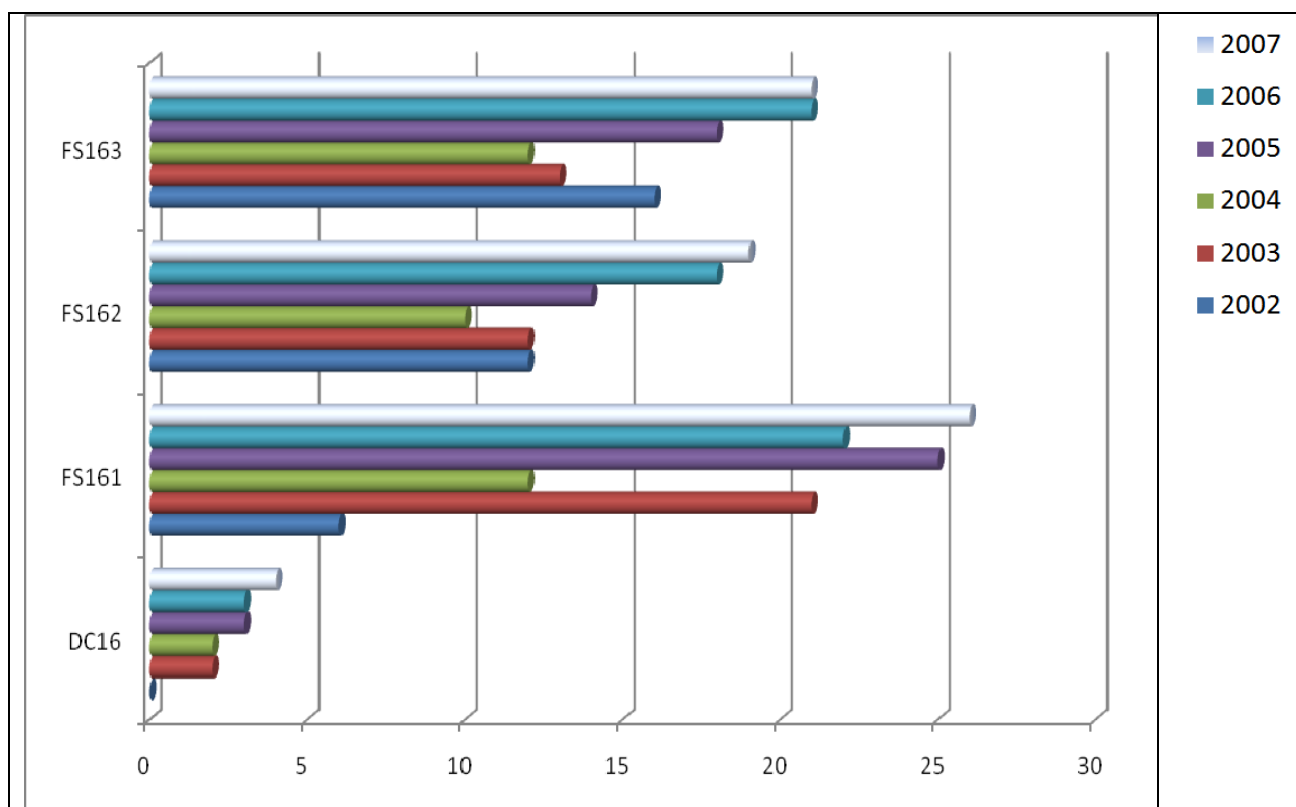
5. CONCLUSION

Table indicating Number of Functions Performed Year on Year

MDB Code	Municipality Name	2002	2003	2004	2005	2006	2007
DC16	Xhariep District Municipality	0	2	2	3	3	4
FS161	Letsemeng Local Municipality	6	21	12	25	22	26
FS162	Kopanong Local Municipality	12	12	10	14	18	19
FS163	Mohokare Local Municipality	16	13	12	18	21	21

Table indicating Percentage of Functions Performed Year on Year

MDB Code	Municipality Name	2002 %	2003 %	2004 %	2005 %	2006 %	2007 %
DC16	Xhariep District Municipality	0.00%	5.88%	5.88%	8.82%	7.89%	10.53%
FS161	Letsemeng Local Municipality	17.65%	61.76%	35.29%	73.53%	57.89%	68.42%
FS162	Kopanong Local Municipality	35.29%	35.29%	29.41%	41.18%	47.37%	50.00%
FS163	Mohokare Local Municipality	47.06%	38.24%	35.29%	52.94%	55.26%	55.26%



Comments

Three municipalities have increased the number of functions that they perform since 2006 (DC16, FS161 and FS162).

FS162 performs exactly half of the function while FS163 performs 55% of its functions. FS161 performs the largest number of functions (68%).

DC16 has shown a steady increase in the number of functions performed since 2002, from 0 in 2002 to 4 in 2007. FS161 has shown the largest improvement in the number of functions performed, as

they were performing less than 20% of functions in 2002 and performed 68% of functions in 2007.

It would appear that the following functions are either not or are poorly performed within the district:

- Air pollution
- Child care facilities
- Municipal airport
- Municipal public transport
- Pontoons and ferries
- Beaches and Amusement facilities
- Control of public nuisance
- Facilities for the accommodation, care and burial of animals
- Licensing of dogs
- Markets
- Municipal abattoirs
- Noise pollution
- Street lighting

* Generally, the quality of the data is satisfactory. While there appear to be gaps in the information, it is often in cases where a function is not performed or is under-performed. Certainly, the information at the MDB's disposal is sufficient to facilitate an assessment of a municipality's ability to perform its powers and functions.

Xhariep District Municipality (DC16)

MDB Code	Name of Municipality	MDB 2002/2003 Recommendation to MEC Gazette No 58 amended by Gazette No 123, 2005	MDB 2007/2008 Recommendation to MEC
DC16	Xhariep District Municipality	No adjustments to perform local municipality functions	<i>No change</i>
FS161	Letsemeng Local Municipality	84(1)(e) - Solid waste 84(1)(j) (Fire fighting services) 84(1)(f) (Roads) 84(1)(l) (Cemeteries) 84(1)(n) - relating to the above functions.	Remove 84(1)(l) (Cemeteries)
FS162	Kopanong Local Municipality	84(1)(e) - Solid waste 84(1)(f) (Roads) 84(1)(j) (Fire fighting services) 84(1)(l) (Cemeteries) 84(1)(n) - relating to the above functions.	Remove 84(1)(l) (Cemeteries)
FS163	Mohokare Local Municipality	84(1)(e) - Solid waste 84(1)(f) (Roads) 84(1)(j) (Fire fighting services) 84(1)(e) Abattoirs only 84(1)(l) (Cemeteries) 84(1)(n) - relating to the above functions.	Remove 84(1)(l) (Cemeteries)