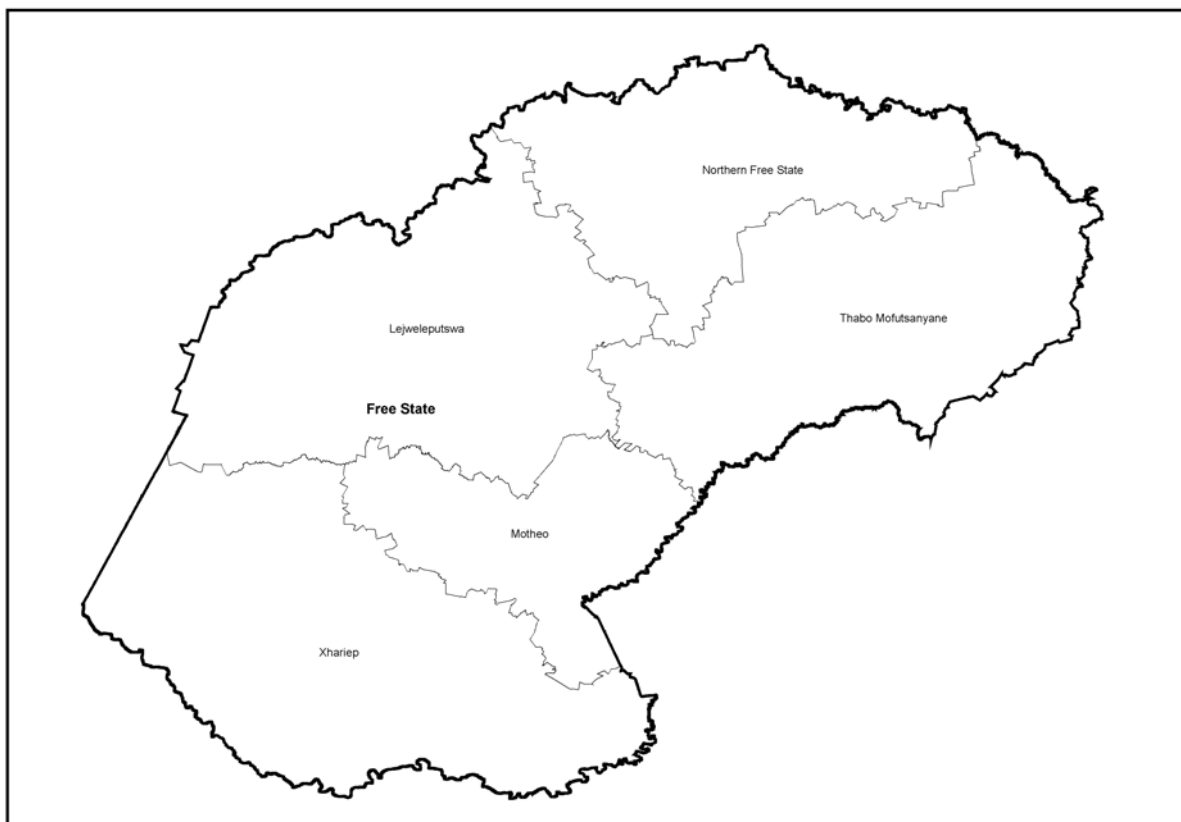


**MUNICIPAL DEMARCATION BOARD
ASSESSMENT OF CAPACITY FOR THE 2007/08 PERIOD
DISTRICT MUNICIPALITY REPORT**

Motheo District Municipality (DC17)

Free State



NOTE:

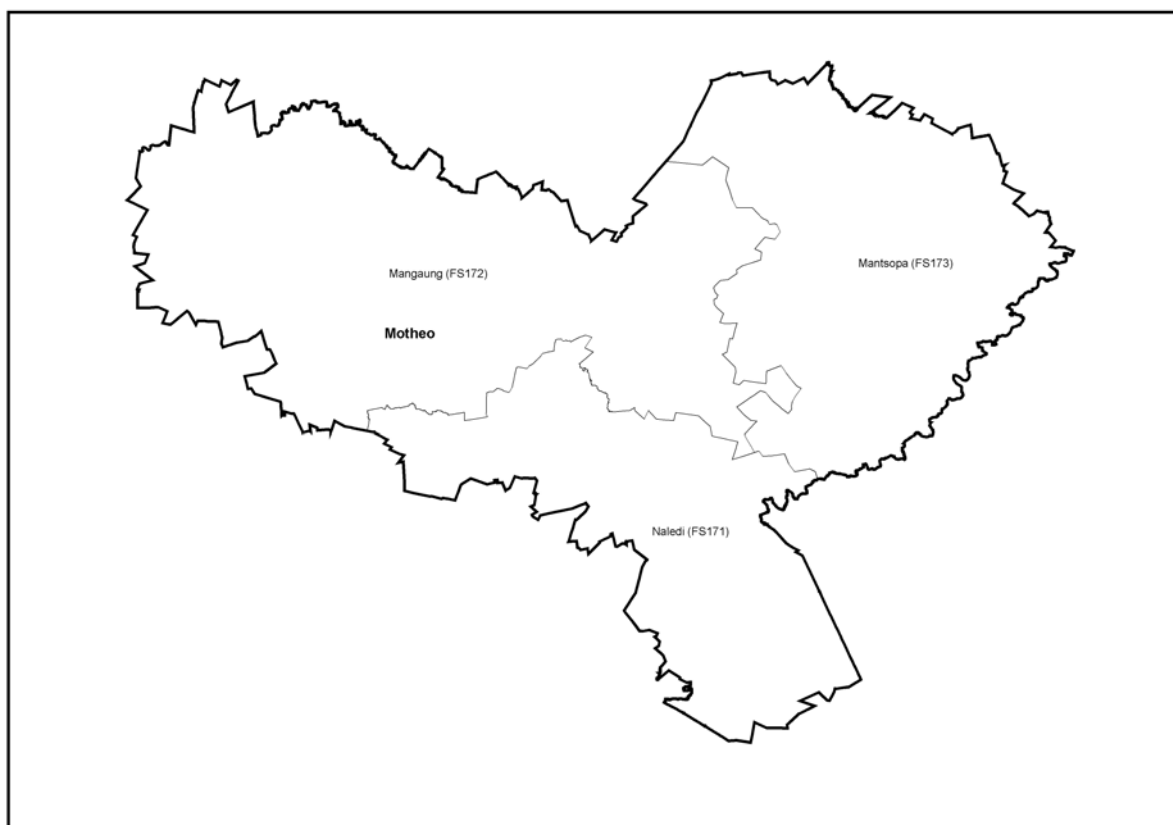
*In this report, Census 2001 data was used to determine population size, number of households and service backlogs. **Municipalities provided all other information in the 2002 -2007 MDB capacity assessments.** Therefore, the MDB takes no responsibility for any inaccurate information and the interpretation thereof.*

1 INTRODUCTION

The **Motheo District Municipality (DC17)** is located in the south eastern portion of the **Free State**. It contains the following local municipalities within its area of jurisdiction:

- **Naledi Local Municipality (FS171)**
- **Mangaung Local Municipality (FS172)**
- **Mantsopa Local Municipality (FS173)**

Map 1 showing the location of the Local Municipalities



Most municipal information contained in this report was obtained directly from questionnaires administered to municipalities by the MDB in August 2007, August 2006, August 2005, August 2004, October 2003 and October 2002. Municipal Managers or a senior manager was required to sign off the forms each year

confirming the accuracy of the information provided to the Board. Following data capture, the questionnaires were sent back to municipalities for verification. Any changes submitted by municipalities were captured and the database modified accordingly. Demographic and related data has been drawn from the 2001 Census.

The objectives of this report are to **provide baseline information and possible capacity shifts in municipalities**, and to make recommendations for consideration by the MEC for Local Government for the adjustment of powers and functions for the district municipality and associated local municipalities for the 2007/2008 period. It also assesses each municipality's capacity to perform *specific powers and functions*, and not the internal organisational matters which, in the short and or long term, may affect the performance of a municipality. The trends recorded in the performance of functions, however, can be used by both Provincial and National Government as an early warning system. It may, for instance, identify a municipality which has consistently demonstrated poor capacity for the rendering of a number of functions in five capacity assessment periods. Thereafter, should it be deemed warranted, Provincial Department of Local Government should intervene to identify possible causes and institute measures to correct identified inadequacies.

2 GENERAL INFORMATION

2.1 Demographic Information

Table indicating population and total households (2001 Census)

MDBName	Name	Population	Population as % of District	Population as % of Province	No. of Households	Households as % of District	Households as % of Province
DC17	Motheo District Municipality	728255	100.00%	26.90%	210634	100.00%	28.72%
FS171	Naledi Local Municipality	27476	3.77%	1.02%	7683	3.65%	1.05%
FS172	Mangaung Local Municipality	645438	88.63%	23.85%	188872	89.67%	25.76%
FS173	Mantsopa Local Municipality	55341	7.60%	2.04%	14079	6.68%	1.92%

Table indicating urban and rural household information (2001 Census)

MDBName	Name	No. of Rural households	Rural hh as % of district	Rural hh as % of province	No. of Urban households	Urban hh as % of district	Urban hh as % of province
DC17	Motheo District Municipality	15593	100.00%	10.47%	190776	100.00%	32.65%
FS171	Naledi Local Municipality	2204	14.13%	1.48%	5373	2.82%	0.92%
FS172	Mangaung Local Municipality	8844	56.72%	5.94%	176175	92.35%	30.15%
FS173	Mantsopa Local Municipality	4545	29.15%	3.05%	9228	4.84%	1.58%

Comment – Demographics

The population of DC17 accounts for 26.90% of the population of the province, with most of the population in the district situated in FS172 (88.63% of the district population and 23.85% of the provincial population). FS171 has the smallest population percentage within the district, with 3.77% of the district population and only 1.02% of the provincial population.

DC17 is significantly more urban than rural with only 8% of its households being in rural areas. This is primarily as a result of FS172, which is significantly more urban than any other municipality in the district.

FS172 is the most urban municipality in the district, accounting for 92.35% of the district's urban households, followed by FS173 contributing 4.84% of the district's urban households and FS171 contributing 2.82%. FS172 also contributes the most number of rural households in the district with 56.72% of the district's rural households, followed by FS173 with 29.15%.

2.2 Service Levels for Core Functions

The information on the service levels was obtained from Stats SA and draws on the census results for 2001.

Table indicating the 2001 service levels for the core function -Water

MDB Name	Municipality Name	RDP Water service levels (Actual number of households)	HH with RDP Water service levels (%)	RDP Water backlog (%) within municipality	RDP Water backlog as % of district total	RDP Water backlog as % of province total
DC17	Motheo District Municipality	201911	95.86%	4.14%	100.00%	27.54%
FS171	Naledi Local Municipality	7485	97.42%	2.58%	2.27%	0.63%
FS172	Mangaung Local Municipality	180908	95.78%	4.22%	91.30%	25.15%
FS173	Mantsopa Local Municipality	13518	96.02%	3.98%	6.43%	1.77%

Table indicating the 2001 service levels for the core function-Sanitation

MDB Name	Municipality Name	RDP Sanitation levels (Actual number of households)	RDP Sanitation service levels (%)	RDP Sanitation backlog (%)	RDP Sanitation backlog as % of district	RDP Sanitation backlog as % of province
DC17	Motheo District Municipality	103309	49.05%	50.95%	100.00%	31.35%
FS171	Naledi Local Municipality	4333	56.40%	43.60%	3.12%	0.98%
FS172	Mangaung Local Municipality	94140	49.84%	50.16%	88.27%	27.67%
FS173	Mantsopa Local Municipality	4836	34.35%	65.65%	8.61%	2.70%

Table indicating the 2001 service levels for the core function-Electricity

MDB Name	Municipality Name	RDP Electricity 2001 (actual)	RDP Electricity (%)	RDP Electricity backlog (%)	RDP Electricity backlog as % of district	RDP Electricity backlog as % of province
DC17	Motheo District Municipality	176907	83.99%	16.01%	100.00%	17.93%
FS171	Naledi Local Municipality	5985	77.90%	22.10%	5.03%	0.90%
FS172	Mangaung Local Municipality	160369	84.91%	15.09%	84.51%	15.16%
FS173	Mantsopa Local Municipality	10553	74.96%	25.04%	10.45%	1.87%

Table indicating the 2001 service levels for the core function-Refuse removal

MDB Name	Municipality Name	RDP Refuse removal 2001 (actual)	RDP Refuse removal (%)	RDP Refuse removal backlog (%)	RDP Refuse removal backlog as % of district	RDP Refuse removal backlog as % of province
DC17	Motheo District Municipality	131726	62.54%	37.46%	100.00%	28.13%
FS171	Naledi Local Municipality	4760	61.95%	38.05%	3.70%	1.04%
FS172	Mangaung Local Municipality	117455	62.19%	37.81%	90.51%	25.46%
FS173	Mantsopa Local Municipality	9511	67.55%	32.45%	5.79%	1.63%

Comment – Service Levels

More than 95% of the district's households have acceptable RDP water service levels. FS171 provides RDP water service levels to 97.42% of its households, FS173 provides to 96.02% of its households and FS172 provides RDP water service levels to 95.78% of its households. FS172 has the highest backlog as a percentage of the district's backlog (91.3%) which represents 25.15% of the provincial backlog.

With respect to sanitation delivery, FS172 provides almost half of its households with acceptable levels of sanitation delivery. The backlog of 50.16% represents 88.27% of the district's backlog and almost 28% of the provincial backlog. FS171 provides 56.40% of its households with sanitation delivery while FS173 has the poorest delivery of sanitation services, providing just over a third of its households with acceptable levels of sanitation delivery (34.35%).

Almost 84% of DC17's residents have access to electricity. This is due to the relatively high level of electricity provision in FS172 (84.91%). The district backlog constitutes 17.93% of the provincial backlog. FS173 has the highest backlog at 25% of its households, followed by FS171 at 22.1% of its households. The smallest backlog in the provision of electricity in the district is in FS172 (15.09%), although this contributes 84.51% to the district backlog and 15.16% to the provincial backlog.

More than 60% of the DC17 households receive acceptable service levels in refuse removal. Refuse removal backlog in the district stands at 37.46%. The highest backlog is in FS171 (38%) while FS173 has the lowest backlog (32.45%). The total district contribution to the provincial backlog is 28.13%. Although FS172 provides refuse removal to 62.19% of its households, its backlog makes up almost 91% of the district's backlog and 25.46% of the provincial backlog.

2.3 Broad Capacity Information

2.3.1 Financial and Staffing Information

Table indicating the operating budget information

MDB Code	Municipality Name	Opex Budget - Actual 2006/07	Opex Budget - Estimates 2007/08	% Change Operating Budget 2006/07 -2007/08	Opex Budget Per Capita 2006/07	Opex Budget Per Capita 2007/08
DC17	Motheo District Municipality	141559650	156309150	10.42%	194	215
FS171	Naledi Local Municipality	27191755.00	26975026.00	-0.80%	990	982
FS172	Mangaung Local Municipality	1604381249.00	1630003189.00	1.60%	2486	2525
FS173	Mantsopa Local Municipality	63543342.00	149285464.00	134.93%	1148	2698

MDB Code	Municipality Name	Capex Budget - Actual 2006/07	Capex Budget - Estimated 2007/08	% Change Capex Budget 2006/07 - 2007/08	Capex Budget Per Capita 2006/07	Capex Budget Per Capita 2007/08
DC17	Motheo District Municipality	226669	77354980	34026.85%	0	106
FS171	Naledi Local Municipality	15367006.00	22800.00	-99.85%	559	1
FS172	Mangaung Local Municipality	352737047.82	673559930.00	90.95%	547	1044
FS173	Mantsopa Local Municipality	49027060.00	65489040.00	33.58%	886	1183

Table indicating broad income sources

MDB Code	Municipality Name	Total Operating Income 2007/08	Total Est Rates income 2007/08	Total Est Income from Service Charges	Total Est Income from Grant Income	% of Total Rates income 2007/08	% of Total Income from Service Charges	% of Total Income from Grant Income
DC17	Motheo District Municipality	156309150			93308000			59.69%
FS171	Naledi Local Municipality	26975026.00	2854929.00	14543828.00	22480000.00	10.58%	53.92%	83.34%
FS172	Mangaung Local Municipality	1630003189.00	247342960.00	877684100.00	282253277.00	15.17%	53.85%	17.32%
FS173	Mantsopa Local Municipality	149285464.00	8332242.00	30176299.00		5.58%	20.21%	

Table indicating the staffing budget levels

MDB Code	Municipality Name	Opex Budget actual 06/07	Opex budget 07/08	Staff Budget Actual 06/07	Staff Budget 07/08	Staff budget as % of Total Opex 2006/2007	Staff budget as % of Total Opex 2007/2008
DC17	Motheo District Municipality	141559650	156309150	51824270	54902100	36.61%	35.12%
FS171	Naledi Local Municipality	27191755.00	26975026.00	13845761.00	14541583.00	50.92%	53.91%
FS172	Mangaung Local Municipality	1604381249.00	1630003189.00	496803515.28	548351404.00	30.97%	33.64%
FS173	Mantsopa Local Municipality	63543342.00	149285464.00	28499282.00	31780656.00	44.85%	21.29%

Table indicating the Annual Staffing Levels 2002 – 2007 (Actual Results)

MDB Code	Municipality Name	Employees 2002	Employees 2003	Employees 2004	Employees 2005	Employees 2006	Employees 2007
DC17	Motheo District Municipality	43	57	85	106	106	120
FS171	Naledi Local Municipality	137	141	138	132	140	150
FS172	Mangaung Local Municipality	4666	4472	4218	4090	3961	3992
FS173	Mantsopa Local Municipality	280	287	287	260	275	233

Table indicating percentage change in staffing levels year on year

MDB Code	Municipality Name	Staffing % change 2002 to 2003	Staffing % change 2003 to 2004	Staffing % change 2004 to 2005	Staffing % change 2005 to 2006	Staffing % change 2006 to 2007
DC17	Motheo District Municipality	32.56%	49.12%	24.71%	0.00%	13.21%
FS171	Naledi Local Municipality	2.92%	-2.13%	-4.35%	6.06%	7.14%
FS172	Mangaung Local Municipality	-4.16%	-5.68%	-3.03%	-3.15%	0.78%
FS173	Mantsopa Local Municipality	2.50%	0.00%	-9.41%	5.77%	-15.27%

Table indicating staff per capita ratios

MDB Code	Municipality Name	Staff per capita ratio 2002	Staff per capita ratio 2003	Staff per capita ratio 2004	Staff per capita ratio 2005	Staff per capita ratio 2006	Staff per capita ratio 2007
DC17	Motheo District Municipality	16936	12777	8568	6870	6870	6069
FS171	Naledi Local Municipality	201	195	199	208	196	183
FS172	Mangaung Local Municipality	138	144	153	158	163	162
FS173	Mantsopa Local Municipality	198	193	193	213	201	238

Table indicating the existing staffing levels

MDB Code	Municipality Name	Number of approved positions 2007	Total number currently employed 2007	Number of vacant positions 2007	% posts filled 2007
DC17	Motheo District Municipality	160	120	55	75.00%
FS171	Naledi Local Municipality	160	150	0	93.75%
FS172	Mangaung Local Municipality	5144	3992	1152	77.60%
FS173	Mantsopa Local Municipality	254	233	21	91.73%

Comment – Financial and Staffing capacity levels

One local municipality has had a decrease in operating budget since the previous year (FS171 with a decrease of 0.80%). The remaining local municipalities as well as the district municipality have had increases in operating budget since 2006/07. FS173 had the largest increase of almost 135% and it now has the highest per capita budget. The lowest per capita budget is still in DC17 (R215).

FS171 had a substantial decrease in Capex budget of almost 100%. The remaining municipalities all had increases in Capex budgets. Per capita budgets remain the highest in FS173 (R1183) and the lowest per capita budget is in FS171 (R1).

FS173 receives the lowest percentage of its total operating income from rates (5.58%) while FS172 receives the highest (15.17%). When looking at service charges income, FS171 and FS172 have the highest receiving almost 54% of their income from service charges. FS173 has the lowest proportion of its operating income coming from service charges (20.21%). The percentage of total income from grant income is highest in FS171 (83.34%) and lowest in FS172 (17.32%).

DC17 and FS172 spend 35% and 34% of their Opex budgets on staff which is close to the optimum percentage to spend on staff. FS171 spends more than half of its operating budget on staff while FS173 spends only 21.29% of its budget on staff.

DC17 has had the largest change in staffing figures with a 13.21% increase since the previous financial year. FS171 has had a 7.14% increase. FS173 is the only municipality to have had a decrease in staffing figures since the previous financial year (-15.27%).

DC17 has the poorest staff per capita ratio of 6069 while FS172 has the best, at one staff member per 162 people. FS173 is the only municipality to have had an increase in its staff per capita ratio since the previous financial year – the remaining municipalities have all had decreases.

None of the municipalities has 100% of their posts filled. FS171 has the most number of posts filled (almost 94%) while DC17 has the least (75%).

2.3.2 Management Profile

Table showing information on Municipal Managers

MDB Code	Municipality Name	Qualification	Years of local Government Experience	Current position Section 57/Acting/Other	Years in existing position	If acting – reason provided
DC17	Motheo District Municipality	BA systematic philosophy MPA public admin	4	MSA Section 57	1	
FS171	Naledi Local Municipality	BA Degree	6	MSA Section 57		
FS172	Mangaung Local Municipality	BA Diploma	7	MSA Section 57	1	
FS173	Mantsopa Local Municipality	Diploma Public Administration and Management (DPuBMA) B Tech Degree Public Management and Admin	11	MSA Section 57		

Table showing information on Financial Managers

MDB Code	Municipality Name	Qualification	Years of local Government Experience	Current position Section 57/Acting/Other	Years in existing position	If acting – reason provided
DC17	Motheo District Municipality	National diploma cost management	10	Acting	0	fixed term contract expired
FS171	Naledi Local Municipality					
FS172	Mangaung Local Municipality	B Com Various Certificates	4	MSA Section 57		
FS173	Mantsopa Local Municipality	B Ed HOD B Com	17	MSA Section 57	10	

Table showing information on Corporate Services Managers

MDB Code	Municipality Name	Qualification	Years of local Government Experience	Current position Section 57/Acting/Other	Years in existing position	If acting – reason provided
DC17	Motheo District Municipality	BA Hons ind psychology Ba ind psychology	8	MSA Section 57	1	
FS171	Naledi Local Municipality	Diploma Human Resources	12	Acting	1	Post to be advertised
FS172	Mangaung Local Municipality	Executive Development Programme Management Development Programme Telkom Technical Certificate	12	MSA Section 57	3	
FS173	Mantsopa Local Municipality	IAC Diploma	30	MSA Section 57	19	

Table showing information on Technical Services Managers

MDB Code	Municipality Name	Qualification	Years of local Government Experience	Current position Section 57/Acting/Other	Years in existing position	If acting – reason provided
DC17	Motheo District Municipality	Nat Dip Civil Engineering Btech civil eng	1	MSA Section 57	1	
FS171	Naledi Local Municipality	National Diploma Civil Engineering	6	Acting		Post to be advertised
FS172	Mangaung Local Municipality	B Tech Env Health Project Management	4	Acting		Post to be advertised
FS173	Mantsopa Local Municipality	M Ed B Ed B Sc ED	25	MSA Section 57	3	

Table showing information on IDP Managers

MDB Code	Municipality Name	Qualification	Years of local Government Experience	Current position Section 57/Acting/Other	Years in existing position	If acting – reason provided
DC17	Motheo District Municipality	Nat.Dip PMA	10	Other	3	
FS171	Naledi Local Municipality	Matric	4	MSA Section 57	4	
FS172	Mangaung Local Municipality	ND TRP (Town and Regional Planning) BSC TRP MBA	11	Other	6	
FS173	Mantsopa Local Municipality		3	MSA Section 57	2	

Comment – Management Profile**Municipal Managers**

All of the municipal managers have degrees. FS173 has 11 years of local government experience while the manager in DC17 has only 4 years of experience. All managers are MSA Section 57 appointments. FS171 and FS173 did not provide information on how long the manager has been in position – the remaining managers are new appointments and have both been in position for one year only.

Financial Managers

FS171 did not provide information on their financial manager. The remaining financial managers have tertiary qualifications. Local government experience ranges from 17 years in FS173 to just 4 years in FS172. There is one acting financial managers (DC17) and the rest of the financial managers are MSA Section 57 appointments. The manager for FS173 has been in position for ten years.

Corporate Services Managers

The corporate services managers all have tertiary qualifications. There is one acting manager in FS171. Local government experience ranges from 30 years in FS173 to just 8 years in DC17. The manager in FS173 has been in position for 19 years while the remaining managers have not been in position for more than three years.

Technical Services Managers

All of the technical services managers have tertiary qualifications. Local government experience ranges from 25 years in FS173 to 1 year in DC17. There are two acting managers (FS171 and FS172). The manager in DC17 has been in position for only 1 year while the manager in FS173 has been in position for three years.

IDP Managers

The IDP manager in FS171 has a matric only while the managers in DC17 and FS172 have tertiary qualifications. Only two managers have 10 or more years of local government experience. All appointments seem to be recent with the FS172 manager having been in position for the longest, at 6 years.

3 CAPACITY ASSESSMENT OF FUNCTIONS

SCHEDULE 4 PART B

3.1 Air pollution

Department rendering the service – Air pollution

MDB Code	Municipality Name	Name of Department Performing function	Only department performing function	Name of other department/s performing the function	Description of function performed by municipality
DC17	Motheo District Municipality				
FS171	Naledi Local Municipality				
FS172	Mangaung Local Municipality				
FS173	Mantsopa Local Municipality				

Function Management – Air pollution

MDB Code	Municipality Name	Qualification	Years of local Government Experience	Current position Section 57/Acting/Other	Years in existing position	If acting – reason provided
DC17	Motheo District Municipality					
FS171	Naledi Local Municipality					
FS172	Mangaung Local Municipality					
FS173	Mantsopa Local Municipality					

Authority - Air pollution

MDB Code	Municipality Name	Authority for the function	Municipality understood authority	
			Authorised as Answered	Understands
DC17	Motheo District Municipality	-		No
FS171	Naledi Local Municipality	Yes		No
FS172	Mangaung Local Municipality	Yes		No
FS173	Mantsopa Local Municipality	Yes		No

Service Provision - Air pollution

MDB Code	Municipality Name	Indicated that the municipality performed the function					
		2002	2003	2004	2005	2006	2007
DC17	Motheo District Municipality	No	Yes	No	No	No	No
FS171	Naledi Local Municipality	No	No	No	Yes	Yes	No
FS172	Mangaung Local Municipality	Yes	Yes	Yes	Yes	Yes	No
FS173	Mantsopa Local Municipality	Yes	No	Yes	Yes	Yes	No

MDB Code	Municipality Name	Municipality makes use of external service provider	Section 78 complete	Service level agreement in place	Municipality makes use of external service provider	Section 78 complete	Service level agreement in place
		2006	2006	2006	2007	2007	2007
DC17	Motheo District Municipality		No	No			
FS171	Naledi Local Municipality		No	No			
FS172	Mangaung Local Municipality		No	No			
FS173	Mantsopa Local Municipality		No	No			

Budget information – Air pollution

MDB Code	Municipality Name	Operating Budget for function					
		2002/2003	2003/2004	2004/2005	2005/2006	2006/2007	2007/2008
DC17	Motheo District Municipality			0	0	0	0
FS171	Naledi Local Municipality			0	479999.99	510000	0
FS172	Mangaung Local Municipality		100000	50000	50000	55000	0
FS173	Mantsopa Local Municipality	2993		30000	0	0	0

MDB Code	Municipality Name	Line item or part allocation				
		2003/2004	2004/2005	2005/2006	2006/2007	2007/2008
DC17	Motheo District Municipality					
FS171	Naledi Local Municipality			Line;	Part;	
FS172	Mangaung Local Municipality	Part	Part;	Part;	Part;	
FS173	Mantsopa Local Municipality		Line;			

MDB Code	Municipality Name	Per capita budget			
		2004/2005	2005/2006	2006/2007	2007/2008
DC17	Motheo District Municipality				
FS171	Naledi Local Municipality		17.47	18.56	
FS172	Mangaung Local Municipality	0.08	0.08	0.09	
FS173	Mantsopa Local Municipality	0.54			

Staffing – Air pollution

MDB Code	Municipality Name	Staff Available for the function					
		2002	2003	2004	2005	2006	2007
DC17	Motheo District Municipality			0	0	0	0
FS171	Naledi Local Municipality			0	0	1	0
FS172	Mangaung Local Municipality	27	18	19	19	19	0
FS173	Mantsopa Local Municipality	2		1	1	1	0

MDB Code	Municipality Name	Staff per capita ratio				Staff Vacancies		
		2004	2005	2006	2007	2005	2006	2007
DC17	Motheo District Municipality							
FS171	Naledi Local Municipality			27480				
FS172	Mangaung Local Municipality	33971	33971	33971				
FS173	Mantsopa Local Municipality	55342	55342	55342		1		

Equipment – Air pollution

MDB Code	Municipality Name	Equipment available for the function					
		2002	2003	2004	2005	2006	2007
DC17	Motheo District Municipality	No	No	No	No	No	No
FS171	Naledi Local Municipality	No	No	No	No	No	No
FS172	Mangaung Local Municipality	Yes	Yes	Yes	Yes	Yes	No
FS173	Mantsopa Local Municipality	No	No	Yes	No	No	No

Comments and Recommendations – Air pollution

Comments:

This function is not performed by any of the municipalities.

Recommendation for the adjustment of the function:

No adjustments are recommended by the MDB for the 2007/08 assessment period.

3.2 Building regulations

Department rendering the service – Building regulations

MDB Code	Municipality Name	Name of Department Performing function	Only department performing function	Name of other department/s performing the function	Description of function performed by municipality
DC17	Motheo District Municipality				
FS171	Naledi Local Municipality	Community Services	Yes		Approval of building plans
FS172	Mangaung Local Municipality	Community and Social Development	Yes		Inspection and approval of plans
FS173	Mantsopa Local Municipality	Technical Services	Yes		Plans inspection and approvals

Function Management – Building regulations

MDB Code	Municipality Name	Qualification	Years of local Government Experience	Current position Section 57/Acting/Other	Years in existing position	If acting – reason provided
DC17	Motheo District Municipality					
FS171	Naledi Local Municipality	Matric		Permanent		
FS172	Mangaung Local Municipality	Nat Dip Public Health	22	Permanent	2	
FS173	Mantsopa Local Municipality	Masters Education BSc Education	25	MSA Sec 57	3	

Authority - Building regulations

MDB Code	Municipality Name	Authority for the function	Municipality understood authority	
			Authorised as Answered	Understands
DC17	Motheo District Municipality	-		No
FS171	Naledi Local Municipality	Yes	Local	Yes
FS172	Mangaung Local Municipality	Yes	Local	Yes
FS173	Mantsopa Local Municipality	Yes	Local	Yes

Service Provision - Building regulations

MDB Code	Municipality Name	Indicated that the municipality performed the function					
		2002	2003	2004	2005	2006	2007
DC17	Motheo District Municipality	Yes	Yes	No	No	No	No
FS171	Naledi Local Municipality	No	Yes	Yes	Yes	Yes	Yes
FS172	Mangaung Local Municipality	Yes	Yes	Yes	No	Yes	Yes
FS173	Mantsopa Local Municipality	Yes	Yes	Yes	Yes	Yes	Yes

MDB Code	Municipality Name	Municipality makes use of external service provider	Section 78 complete	Service level agreement in place	Municipality makes use of external service provider	Section 78 complete	Service level agreement in place
		2006	2006	2006	2007	2007	2007
DC17	Motheo District Municipality						
FS171	Naledi Local Municipality		No	No		No	No
FS172	Mangaung Local Municipality		No	No		No	No
FS173	Mantsopa Local Municipality		No	No		No	No

Budget information – Building regulations

MDB Code	Municipality Name	Operating Budget for function					
		2002/2003	2003/2004	2004/2005	2005/2006	2006/2007	2007/2008
DC17	Motheo District Municipality			0	0	0	0
FS171	Naledi Local Municipality		2600	1500	479999.99	500000	2344155
FS172	Mangaung Local Municipality	4325360	3332410	5972450	0	5836810	39500000
FS173	Mantsopa Local Municipality	300000	87926	26500	0	0	1548750

MDB Code	Municipality Name	Line item or part allocation				
		2003/2004	2004/2005	2005/2006	2006/2007	2007/2008

DC17	Motheo District Municipality					
FS171	Naledi Local Municipality	Part	Part;	Line;	Part;	Part
FS172	Mangaung Local Municipality	Line	Line;		Line;	Part
FS173	Mantsopa Local Municipality	Line	Part;			Part

MDB Code	Municipality Name	Per capita budget			
		2004/2005	2005/2006	2006/2007	2007/2008
DC17	Motheo District Municipality				
FS171	Naledi Local Municipality	0.05	17.47	18.20	85.32
FS172	Mangaung Local Municipality	9.25		9.04	61.20
FS173	Mantsopa Local Municipality	0.48			27.99

Staffing – Building regulations

MDB Code	Municipality Name	Staff Available for the function					
		2002	2003	2004	2005	2006	2007
DC17	Motheo District Municipality		0	0	0	0	0
FS171	Naledi Local Municipality		1	2	0	1	1
FS172	Mangaung Local Municipality	25	25	25	0	2	10
FS173	Mantsopa Local Municipality	1	1	2	1	1	1

MDB Code	Municipality Name	Staff per capita ratio				Staff Vacancies		
		2004	2005	2006	2007	2005	2006	2007
DC17	Motheo District Municipality							
FS171	Naledi Local Municipality	13740		27480	27476			
FS172	Mangaung Local Municipality	25818		322721	64544			
FS173	Mantsopa Local Municipality	27671	55342	55342	55341			0

Equipment – Building regulations

MDB Code	Municipality Name	Equipment available for the function					
		2002	2003	2004	2005	2006	2007
DC17	Motheo District Municipality	No	No	No	No	No	No
FS171	Naledi Local Municipality	No	Yes	No	Yes	Yes	Yes
FS172	Mangaung Local Municipality	No	Yes	Yes	No	Yes	Yes
FS173	Mantsopa Local Municipality	Yes	Yes	Yes	Yes	Yes	Yes

Comments and Recommendations – Building regulations

Comments:

All three local municipalities perform the building regulations function. In addition each municipality performs the function from a single department and has indicated approval of plans as one of the primary aspects of the function.

The manager in FS171 has a matric only while the other two managers have tertiary qualifications and more than 20 years of local government experience. None of the managers has been in position for more than three years.

There is budget available for the function in all three local municipalities. All budgets show an increase since the previous financial year. Per capita budgets range from R27.99 in FS173 to R85.32 in FS171.

Each local municipality has staff available for the function and there are no staff vacancies. FS172 has the most staff available (10) while both of the other municipalities have one staff member available for the function.

All three local municipalities have equipment available for the function.

In summary:

The local municipalities have capacity to perform this function.

Recommendation for the adjustment of the function:

No adjustments are recommended by the MDB for the 2007/08 assessment period.

3.3 Child care facilities

Department rendering the service – Child care facilities

MDB Code	Municipality Name	Name of Department Performing function	Only department performing function	Name of other department/s performing the function	Description of function performed by municipality
DC17	Motheo District Municipality				
FS171	Naledi Local Municipality	Community Services	Yes		Control of child care facilities
FS172	Mangaung Local Municipality	Community and Social Development/ Development: Environmental Health Div.	Yes		Certification of premises Inspection and investigation Ensuring healthy environments
FS173	Mantsopa Local Municipality	Corporate Services	Yes		Licencing facilities Inspection

Function Management – Child care facilities

MDB Code	Municipality Name	Qualification	Years of local Government Experience	Current position Section 57/Acting/Other	Years in existing position	If acting – reason provided
DC17	Motheo District Municipality					
FS171	Naledi Local Municipality	Diploma HR	12	Acting	1	Post to be filled
FS172	Mangaung Local Municipality	Nat Dipl Public Health	22	Permanent	2	
FS173	Mantsopa Local Municipality	B Tech Environmental Health	6	Permanent		

Authority - Child care facilities

MDB Code	Municipality Name	Authority for the function	Municipality understood authority	
			Authorised as Answered	Understands
DC17	Motheo District Municipality	-		No
FS171	Naledi Local Municipality	Yes	Local	Yes
FS172	Mangaung Local Municipality	Yes	Local	Yes

FS173	Mantsopa Local Municipality	Yes	Local	Yes
-------	-----------------------------	-----	-------	-----

Service Provision - Child care facilities

MDB Code	Municipality Name	Indicated that the municipality performed the function					
		2002	2003	2004	2005	2006	2007
DC17	Motheo District Municipality	No	Yes	No	No	No	No
FS171	Naledi Local Municipality	No	No	No	Yes	Yes	Yes
FS172	Mangaung Local Municipality	Yes	Yes	Yes	Yes	Yes	Yes
FS173	Mantsopa Local Municipality	No	Yes	No	No	No	Yes

MDB Code	Municipality Name	Municipality makes use of external service provider	Section 78 complete	Service level agreement in place	Municipality makes use of external service provider	Section 78 complete	Service level agreement in place
		2006	2006	2006	2007	2007	2007
DC17	Motheo District Municipality						
FS171	Naledi Local Municipality		No	No		No	No
FS172	Mangaung Local Municipality		No	No		No	No
FS173	Mantsopa Local Municipality					No	No

Budget information – Child care facilities

MDB Code	Municipality Name	Operating Budget for function					
		2002/2003	2003/2004	2004/2005	2005/2006	2006/2007	2007/2008
DC17	Motheo District Municipality			0	0	0	0
FS171	Naledi Local Municipality			0	50000	500000	17600
FS172	Mangaung Local Municipality	Part of another budget	200000	220000	220000	250000	240000
FS173	Mantsopa Local Municipality		2500000	0	0	0	939621

MDB Code	Municipality Name	Line item or part allocation				
		2003/2004	2004/2005	2005/2006	2006/2007	2007/2008
DC17	Motheo District Municipality					
FS171	Naledi Local Municipality			Line;	Part;	Part
FS172	Mangaung Local Municipality	Part	Part;	Part;	Part;	Part
FS173	Mantsopa Local Municipality	Part				Part

MDB Code	Municipality Name	Per capita budget			
		2004/2005	2005/2006	2006/2007	2007/2008
DC17	Motheo District Municipality				

FS171	Naledi Local Municipality		1.82	18.20	0.64
FS172	Mangaung Local Municipality	0.34	0.34	0.39	0.37
FS173	Mantsopa Local Municipality				16.98

Staffing – Child care facilities

MDB Code	Municipality Name	Staff Available for the function					
		2002	2003	2004	2005	2006	2007
DC17	Motheo District Municipality			0	0	0	0
FS171	Naledi Local Municipality	1		0	0	2	2
FS172	Mangaung Local Municipality	30	18	19	19	20	23
FS173	Mantsopa Local Municipality		2	0	0	0	2

MDB Code	Municipality Name	Staff per capita ratio				Staff Vacancies		
		2004	2005	2006	2007	2005	2006	2007
DC17	Motheo District Municipality							
FS171	Naledi Local Municipality			13740	13738			0
FS172	Mangaung Local Municipality	33971	33971	32272	28063			2
FS173	Mantsopa Local Municipality				27671			2

Equipment – Child care facilities

MDB Code	Municipality Name	Equipment available for the function					
		2002	2003	2004	2005	2006	2007
DC17	Motheo District Municipality	No	No	No	No	No	No
FS171	Naledi Local Municipality	No	No	No	Yes	Yes	Yes
FS172	Mangaung Local Municipality	Yes	Yes	Yes	Yes	Yes	Yes
FS173	Mantsopa Local Municipality	No	No	No	No	No	Yes

Comments and Recommendations – Child care facilities

Comments:

The three local municipalities perform the child care facilities function and all do so from a single department.

All three managers have tertiary qualifications. The manager in FS162 has the most local government experience, 22 years, while the manager in FS173 has only 6 years of experience. The manager in FS171 is in an acting position while the other two managers are in permanent positions. None of the managers has been in position for more than two years.

There is budget available for the function in each local municipality although FS173 was the only municipality to receive an increase in budget available since the previous financial year. Per capita budgets range from R0.37 in FS172 to R16.98 in FS173.

FS172 has the most staff available for the function (23) while the other municipalities each have two staff members available. FS172 and FS173 have staff vacancies.

All three local municipalities have equipment available for the function.

In summary:

The local municipalities have capacity to perform this function.

Recommendation for the adjustment of the function:

No adjustments are recommended by the MDB for the 2007/08 assessment period.

3.4 Electricity reticulation**Department rendering the service – Electricity reticulation**

MDB Code	Municipality Name	Name of Department Performing function	Only department performing function	Name of other department/s performing the function	Description of function performed by municipality
DC17	Motheo District Municipality				
FS171	Naledi Local Municipality	Technical Services	Yes		Provide households with electricity Street lighting
FS172	Mangaung Local Municipality	Infrastructure Services	Yes		Electricity supply to households Street lighting
FS173	Mantsopa Local Municipality	Technical Services	Yes		Electricity supply to households

Function Management – Electricity reticulation

MDB Code	Municipality Name	Qualification	Years of local Government Experience	Current position Section 57/Acting/Other	Years in existing position	If acting – reason provided
DC17	Motheo District Municipality					
FS171	Naledi Local Municipality	Diploma Civil Engineering	6	Acting		Post to be Advertised
FS172	Mangaung Local Municipality	B Tech Env Health	4	Acting		Post to be advertised
FS173	Mantsopa Local Municipality	Masters Eductaion BSC Education	25	MSA Sec 57	3	

Authority - Electricity reticulation

MDB Code	Municipality Name	Authority for the function	Municipality understood authority	
			Authorised as Answered	Understands
DC17	Motheo District Municipality	No		No
FS171	Naledi Local Municipality	Yes	Local	Yes
FS172	Mangaung Local Municipality	Yes	Local	Yes
FS173	Mantsopa Local Municipality	Yes	Local	Yes

Service Provision - Electricity reticulation

MDB Code	Municipality Name	Indicated that the municipality performed the function					
		2002	2003	2004	2005	2006	2007
DC17	Motheo District Municipality	No	No	No	No	Yes	No
FS171	Naledi Local Municipality	Yes	Yes	No	Yes	Yes	No
FS172	Mangaung Local Municipality	Yes	Yes	Yes	No	No	No
FS173	Mantsopa Local	Yes	Yes	Yes	Yes	No	Yes

	Municipality						
--	--------------	--	--	--	--	--	--

MDB Code	Municipality Name	Municipality makes use of external service provider	Section 78 complete	Service level agreement in place	Municipality makes use of external service provider	Section 78 complete	Service level agreement in place
		2006	2006	2006	2007	2007	2007
DC17	Motheo District Municipality		No	No			
FS171	Naledi Local Municipality		No	No	Centlec	Yes	Yes
FS172	Mangaung Local Municipality	Centlec	Yes	Yes	Centlec	Yes	Yes
FS173	Mantsopa Local Municipality	Eskom	Yes	Yes		No	No

Budget information – Electricity reticulation

MDB Code	Municipality Name	Operating Budget for function					
		2002/2003	2003/2004	2004/2005	2005/2006	2006/2007	2007/2008
DC17	Motheo District Municipality			0	0	67800	0
FS171	Naledi Local Municipality	4003530	4317971	486000	0	378000	627764
FS172	Mangaung Local Municipality	377198670	389522830	24593000	0	557166	511422000
FS173	Mantsopa Local Municipality	9898627	10776045	11468000	799284.64	467000	12220112

MDB Code	Municipality Name	Line item or part allocation				
		2003/2004	2004/2005	2005/2006	2006/2007	2007/2008
DC17	Motheo District Municipality				Part;	
FS171	Naledi Local Municipality	Line	Line;		Line;	Line
FS172	Mangaung Local Municipality	Line	Line;		Line;	Line
FS173	Mantsopa Local Municipality	Line	Line;	Line;	Line;	Line

MDB Code	Municipality Name	Per capita budget			
		2004/2005	2005/2006	2006/2007	2007/2008
DC17	Motheo District Municipality			0.09	
FS171	Naledi Local Municipality	17.69		13.76	22.85
FS172	Mangaung Local Municipality	38.10		0.86	792.36
FS173	Mantsopa Local Municipality	207.22	14.44	8.44	220.81

Income information – Electricity reticulation

MDB Code	Operating Income		Function Income as a % of Operation Income	
	Actual 2006/2007	Estimated 2007/2008	2006/2007	2007/2008
	DC17		0	
FS171	738000	627764	2.71%	2.33%
FS172	513236000	511422000	31.99%	31.38%

FS173	14007519	12220112	22.04%	8.19%
-------	----------	----------	--------	-------

Staffing – Electricity reticulation

MDB Code	Municipality Name	Staff Available for the function					
		2002	2003	2004	2005	2006	2007
DC17	Motheo District Municipality			0	0	1	0
FS171	Naledi Local Municipality		2	4	4	4	4
FS172	Mangaung Local Municipality	520	520	500	0	0	10
FS173	Mantsopa Local Municipality	7	9	15	9	9	60

MDB Code	Municipality Name	Staff per capita ratio				Staff Vacancies		
		2004	2005	2006	2007	2005	2006	2007
DC17	Motheo District Municipality			728263				
FS171	Naledi Local Municipality	6870	6870	6870	6869			0
FS172	Mangaung Local Municipality	1291			64544		130	
FS173	Mantsopa Local Municipality	3689	6149	6149	922	2		

Equipment – Electricity reticulation

MDB Code	Municipality Name	Equipment available for the function					
		2002	2003	2004	2005	2006	2007
DC17	Motheo District Municipality	No	No	No	No	No	No
FS171	Naledi Local Municipality	Yes	Yes	Yes	Yes	Yes	Yes
FS172	Mangaung Local Municipality	Yes	Yes	Yes	No	Yes	Yes
FS173	Mantsopa Local Municipality	Yes	Yes	Yes	Yes	Yes	Yes

Comments and Recommendations – Electricity reticulation

Comments:

All three local municipalities have indicated that they are performing the electricity function by providing electricity. FS171 and FS172 also indicate street lighting as part of this function.

All three managers have tertiary qualifications and both managers in FS171 and FS172 are in acting positions. The manager in FS173 has 25 years of local government experience and has been in the position for three years.

Both FS171 and FS172 have indicated the use of an external service provider, Centlec. In both cases, a Section 78 has been completed and service level agreements are in place.

FS171 has received a increase in budget since the previous financial year while FS172 has received a substantial increase. FS173 also has had an increase in budget. All municipalities use line items for this function and per capita budgets range from R22.85 in FS171 to R792.36 in FS172. The function income contributes to 31.38% of the operating income in FS172 and just 2.33% of operating income in FS171.

The three municipalities have staff available for the function and these show an increase since the previous financial year. There are no staff vacancies.

All three local municipalities have equipment available for the function.

In summary:

The local municipalities have capacity to perform this function.

3.5 Fire Fighting

Department rendering the service – Fire Fighting

MDB Code	Municipality Name	Name of Department Performing function	Only department performing function	Name of other department/s performing the function	Description of function performed by municipality
DC17	Motheo District Municipality				
FS171	Naledi Local Municipality	Community Services	Yes		Extinguishing veld and domestic fires
FS172	Mangaung Local Municipality	Community and Social Services	Yes		Functions performed in accordance with the Fire Brigade Services Act, Act 99 of 1987
FS173	Mantsopa Local Municipality	Corporate Services	Yes		Attend to all fires

Function Management – Fire Fighting

MDB Code	Municipality Name	Qualification	Years of local Government Experience	Current position Section 57/Acting/Other	Years in existing position	If acting – reason provided
DC17	Motheo District Municipality					
FS171	Naledi Local Municipality	Diploma HR	12	Acting	1	Post to be filled
FS172	Mangaung Local Municipality	Recognised four year post matric qualification in Fire Technology Intermediate Life Support Code C Drivers Licence	10	Permanent	10	
FS173	Mantsopa Local Municipality	IAC Diploma	30	MSA Sec 57	19	

Authority - Fire Fighting

MDB Code	Municipality Name	Authority for the function	Municipality understood authority	
			Authorised as Answered	Understands
DC17	Motheo District Municipality	No		No
FS171	Naledi Local Municipality	Yes, including DM function	Local	Yes
FS172	Mangaung Local Municipality	Yes, including DM function	Local	Yes
FS173	Mantsopa Local Municipality	Yes, including DM function	Local	Yes

Service Provision - Fire Fighting

MDB Code	Municipality Name	Indicated that the municipality performed the function

		2002	2003	2004	2005	2006	2007
DC17	Motheo District Municipality	No	No	No	Yes	No	No
FS171	Naledi Local Municipality	Yes	Yes	Yes	Yes	Yes	Yes
FS172	Mangaung Local Municipality	Yes	No	Yes	No	Yes	Yes
FS173	Mantsopa Local Municipality	Yes	Yes	Yes	Yes	Yes	Yes

MDB Code	Municipality Name	Municipality makes use of external service provider	Section 78 complete	Service level agreement in place	Municipality makes use of external service provider	Section 78 complete	Service level agreement in place
		2006	2006	2006	2007	2007	2007
DC17	Motheo District Municipality						
FS171	Naledi Local Municipality		No	No		No	No
FS172	Mangaung Local Municipality					No	No
FS173	Mantsopa Local Municipality		No	No		No	No

Budget information – Fire Fighting

MDB Code	Municipality Name	Operating Budget for function					
		2002/2003	2003/2004	2004/2005	2005/2006	2006/2007	2007/2008
DC17	Motheo District Municipality			0	200000	0	0
FS171	Naledi Local Municipality	91973	166655	126433	72691	82170	17600
FS172	Mangaung Local Municipality	19506430	23496240	21192820	0	26063754	25887950
FS173	Mantsopa Local Municipality	626124	497081	533410	661740	1028679	994689

MDB Code	Municipality Name	Line item or part allocation				
		2003/2004	2004/2005	2005/2006	2006/2007	2007/2008
DC17	Motheo District Municipality			Line;		
FS171	Naledi Local Municipality	Part	Line;	Line;	Line;	Part
FS172	Mangaung Local Municipality	Line	Line;		Line;	Part
FS173	Mantsopa Local Municipality	Line	Line;	Line;	Line;	Line

MDB Code	Municipality Name	Per capita budget			
		2004/2005	2005/2006	2006/2007	2007/2008
DC17	Motheo District Municipality		0.27		
FS171	Naledi Local Municipality	4.60	2.65	2.99	0.64
FS172	Mangaung Local Municipality	32.83		40.38	40.11
FS173	Mantsopa Local Municipality	9.64	11.96	18.59	17.97

Staffing – Fire Fighting

MDB	Municipality Name	Staff Available for the function

Code		2002	2003	2004	2005	2006	2007
DC17	Motheo District Municipality			0	2	0	0
FS171	Naledi Local Municipality	30	280	55	25	25	15
FS172	Mangaung Local Municipality	162		135	0	136	124
FS173	Mantsopa Local Municipality	10	44	55	62	62	60

MDB Code	Municipality Name	Staff per capita ratio				Staff Vacancies		
		2004	2005	2006	2007	2005	2006	2007
DC17	Motheo District Municipality		364132					
FS171	Naledi Local Municipality	500	1099	1099	1832			5
FS172	Mangaung Local Municipality	4781		4746	5205		34	33
FS173	Mantsopa Local Municipality	1006	893	893	922			

Equipment – Fire Fighting

MDB Code	Municipality Name	Equipment available for the function					
		2002	2003	2004	2005	2006	2007
DC17	Motheo District Municipality	No	No	No	No	No	No
FS171	Naledi Local Municipality	Yes	No	Yes	Yes	Yes	Yes
FS172	Mangaung Local Municipality	Yes	No	Yes	No	Yes	Yes
FS173	Mantsopa Local Municipality	Yes	Yes	Yes	Yes	Yes	Yes

Comments and Recommendations – Fire Fighting

Comments:

The three local municipalities perform the fire fighting function and each do so from a single department.

The managers have tertiary qualifications and all have more than ten years of local government experience. There is one acting manager in FS171. The manager in FS173 has been in position the longest (19 years) while the manager in FS171 has only been in position for one year.

All three municipalities have received decreases in budget since the previous financial year. Per capita budgets range from R0.64 in FS171 to R40.11 in FS172.

FS172 has the most staff available for the function (124) while the other municipalities also have staff available. There are 33 staff vacancies in FS172 and 5 vacancies in FS171.

All three local municipalities have equipment available for the function.

In summary:

The local municipalities have capacity to perform this function.

Recommendation for the adjustment of the function:

No adjustments are recommended by the MDB for the 2007/08 assessment period.

3.6 Local tourism

Department rendering the service – Local tourism

MDB Code	Municipality Name	Name of Department	Only department	Name of other	Description of function performed by municipality
----------	-------------------	--------------------	-----------------	---------------	---

		Performing function	performing function	department/s performing the function	
DC17	Motheo District Municipality	economic development	Yes		promote tourism manage tourist sites for local municipalities
FS171	Naledi Local Municipality				
FS172	Mangaung Local Municipality				
FS173	Mantsopa Local Municipality	LED and Tourism	Yes		Co-ordinate, implement and facilitate tourism

Function Management – Local tourism

MDB Code	Municipality Name	Qualification	Years of local Government Experience	Current position Section 57/Acting/Other	Years in existing position	If acting – reason provided
DC17	Motheo District Municipality	Cert - Community Development	7	Other	7	
FS171	Naledi Local Municipality					
FS172	Mangaung Local Municipality					
FS173	Mantsopa Local Municipality	N5 - National Certificate Accounting and Computer Practice	13	Permanent	5	

Authority - Local tourism

MDB Code	Municipality Name	Authority for the function	Municipality understood authority	
			Authorised as Answered	Understands
DC17	Motheo District Municipality	Yes, including FS171	District	Yes
FS171	Naledi Local Municipality	No		Yes
FS172	Mangaung Local Municipality	Yes		No
FS173	Mantsopa Local Municipality	Yes	Local	Yes

Service Provision - Local tourism

MDB Code	Municipality Name	Indicated that the municipality performed the function					
		2002	2003	2004	2005	2006	2007
DC17	Motheo District Municipality	Yes	Yes	No	Yes	Yes	Yes
FS171	Naledi Local Municipality	Yes	Yes	No	Yes	No	No
FS172	Mangaung Local Municipality	Yes	Yes	Yes	No	Yes	No
FS173	Mantsopa Local Municipality	Yes	Yes	No	Yes	No	Yes

MDB Code	Municipality Name	Municipality makes use of external service provider	Section 78 complete	Service level agreement in place	Municipality makes use of external service provider	Section 78 complete	Service level agreement in place
		2006	2006	2006	2007	2007	2007

DC17	Motheo District Municipality		No	No		No	No
FS171	Naledi Local Municipality						
FS172	Mangaung Local Municipality		No	No			
FS173	Mantsopa Local Municipality	Tourism Forum Maluti Tourism	Yes	No		No	No

Budget information – Local tourism

MDB Code	Municipality Name	Operating Budget for function					
		2002/2003	2003/2004	2004/2005	2005/2006	2006/2007	2007/2008
DC17	Motheo District Municipality	732080	3470000	1730000	3654910	5106340	17000000
FS171	Naledi Local Municipality		150000	0	0	0	0
FS172	Mangaung Local Municipality	200000	1059300	250000	0	1400370	0
FS173	Mantsopa Local Municipality	14000	70000	0	4200	4600	3401933

MDB Code	Municipality Name	Line item or part allocation				
		2003/2004	2004/2005	2005/2006	2006/2007	2007/2008
DC17	Motheo District Municipality	Line	Line;	Line;	Line;Part;	Part
FS171	Naledi Local Municipality	Part				
FS172	Mangaung Local Municipality	Line/Part	Line;		Line;	
FS173	Mantsopa Local Municipality	Line		Part;	Part;	Part

MDB Code	Municipality Name	Per capita budget			
		2004/2005	2005/2006	2006/2007	2007/2008
DC17	Motheo District Municipality	2.38	5.02	7.01	23.34
FS171	Naledi Local Municipality				
FS172	Mangaung Local Municipality	0.39		2.17	
FS173	Mantsopa Local Municipality		0.08	0.08	61.47

Staffing – Local tourism

MDB Code	Municipality Name	Staff Available for the function					
		2002	2003	2004	2005	2006	2007
DC17	Motheo District Municipality	2	5	3	3	5	4
FS171	Naledi Local Municipality	1	1	0	1	0	0
FS172	Mangaung Local Municipality	1	6	8	0	3	0
FS173	Mantsopa Local Municipality	2	2	0	1	1	1

MDB Code	Municipality Name	Staff per capita ratio				Staff Vacancies		
		2004	2005	2006	2007	2005	2006	2007
DC17	Motheo District Municipality	242754	242754	145653	182064	1		6

FS171	Naledi Local Municipality		27480				
FS172	Mangaung Local Municipality	80680		215147			
FS173	Mantsopa Local Municipality		55342	55342	55341	1	3

Equipment – Local tourism

MDB Code	Municipality Name	Equipment available for the function					
		2002	2003	2004	2005	2006	2007
DC17	Motheo District Municipality	Yes	Yes	Yes	No	Yes	Yes
FS171	Naledi Local Municipality	No	No	No	No	No	No
FS172	Mangaung Local Municipality	No	Yes	Yes	No	Yes	No
FS173	Mantsopa Local Municipality	No	Yes	No	No	No	Yes

Comments and Recommendations – Local tourism

Comments:

DC17 and FS173 perform the local tourism function. Both have indicated the promotion of tourism as one of the main aspects of the function.

Both managers have tertiary qualifications. The manager in DC17 has 7 years of local government experience and has been in position for 7 years while the manager in FS173 has 13 years of experience and has been in position for 5 years.

DC17 and FS171 have budget available for the function and both show an increase since the previous financial year. Per capita budgets range from R23.34 in DC17 to R61.47 in FS173.

There is staff available for the function in both municipalities although there are also staff vacancies in both municipalities.

Both municipalities have equipment available for the function.

In summary:

DC17 and FS171 have capacity to perform the function.

Recommendation for the adjustment of the function:

No adjustments are recommended by the MDB for the 2007/08 assessment period.

3.7 Municipal airport

Department rendering the service – Municipal airport

MDB Code	Municipality Name	Name of Department Performing function	Only department performing function	Name of other department/s performing the function	Description of function performed by municipality
DC17	Motheo District Municipality				
FS171	Naledi Local Municipality				
FS172	Mangaung Local Municipality	Parks and Cemeteries	No	Finance and Property Management	Rent collection Leasing of land
FS173	Mantsopa Local Municipality				

Function Management – Municipal airport

MDB Code	Municipality Name	Qualification	Years of local Government Experience	Current position Section 57/Acting/Other	Years in existing position	If acting – reason provided
DC17	Motheo District Municipality					
FS171	Naledi Local Municipality					
FS172	Mangaung Local Municipality	BA Municipal and Public Admin LLB - Incomplete	25	Permanent	10	
FS173	Mantsopa Local Municipality					

Authority - Municipal airport

MDB Code	Municipality Name	Authority for the function	Municipality understood authority	
			Authorised as Answered	Understands
DC17	Motheo District Municipality	Yes, except for FS172		No
FS171	Naledi Local Municipality	Yes		No
FS172	Mangaung Local Municipality	Yes, including DM function	Local	Yes
FS173	Mantsopa Local Municipality	Yes		No

Service Provision - Municipal airport

MDB Code	Municipality Name	Indicated that the municipality performed the function					
		2002	2003	2004	2005	2006	2007
DC17	Motheo District Municipality	No	No	No	No	No	No
FS171	Naledi Local Municipality	No	No	No	No	No	No
FS172	Mangaung Local Municipality	Yes	Yes	Yes	No	Yes	No
FS173	Mantsopa Local Municipality	No	No	No	No	No	No

MDB Code	Municipality Name	Municipality makes use of external service provider	Section 78 complete	Service level agreement in place	Municipality makes use of external service provider	Section 78 complete	Service level agreement in place
		2006	2006	2006	2007	2007	2007
DC17	Motheo District Municipality						
FS171	Naledi Local Municipality						
FS172	Mangaung Local Municipality		Yes	No	Westline Aviation	Yes	Yes
FS173	Mantsopa Local Municipality						

Budget information – Municipal airport

MDB Code	Municipality Name	Operating Budget for function					
		2002/2003	2003/2004	2004/2005	2005/2006	2006/2007	2007/2008
DC17	Motheo District	10000	70000	0	0	3900810	0

	Municipality						
FS171	Naledi Local Municipality			0	0	0	0
FS172	Mangaung Local Municipality	241610	351960	267880	0	257570	13518270
FS173	Mantsopa Local Municipality			0	0	0	0

MDB Code	Municipality Name	Line item or part allocation				
		2003/2004	2004/2005	2005/2006	2006/2007	2007/2008
DC17	Motheo District Municipality	Line			Line;Part;	
FS171	Naledi Local Municipality					
FS172	Mangaung Local Municipality	Line	Line;		Line;	Part
FS173	Mantsopa Local Municipality					

MDB Code	Municipality Name	Per capita budget			
		2004/2005	2005/2006	2006/2007	2007/2008
DC17	Motheo District Municipality			5.36	
FS171	Naledi Local Municipality				
FS172	Mangaung Local Municipality	0.42		0.40	20.94
FS173	Mantsopa Local Municipality				

Staffing – Municipal airport

MDB Code	Municipality Name	Staff Available for the function					
		2002	2003	2004	2005	2006	2007
DC17	Motheo District Municipality			0	0	0	0
FS171	Naledi Local Municipality			0	0	0	0
FS172	Mangaung Local Municipality			0	0	0	0
FS173	Mantsopa Local Municipality			0	0	0	0

MDB Code	Municipality Name	Staff per capita ratio				Staff Vacancies		
		2004	2005	2006	2007	2005	2006	2007
DC17	Motheo District Municipality							
FS171	Naledi Local Municipality							
FS172	Mangaung Local Municipality							
FS173	Mantsopa Local Municipality							

Equipment – Municipal airport

MDB Code	Municipality Name	Equipment available for the function					
		2002	2003	2004	2005	2006	2007
DC17	Motheo District Municipality	No	No	No	No	No	No
FS171	Naledi Local Municipality	No	No	No	No	No	No
FS172	Mangaung Local Municipality	Yes	Yes	Yes	No	Yes	Yes
FS173	Mantsopa Local Municipality	No	No	No	No	No	No

Comments and Recommendations – Municipal airport**Comments:**

DC172 performs the municipality airport function and is involved in rent collection and the leasing of land.

The manager for the function has a tertiary qualification, 25 years of local government experience and has been in the position for 10 years.

DC172 uses an external service provider, Westline Aviation. A section 78 has been completed and a service level agreement is in place.

DC172 has budget available and this is higher than the budget for the previous financial year. There is no staff available for this function although DC172 does have equipment available for the function.

In summary:

DC172 has capacity for the function.

Recommendation for the adjustment of the function:

No adjustments are recommended by the MDB for the 2007/08 assessment period.

3.8 Municipal Planning**Department rendering the service – Municipal Planning**

MDB Code	Municipality Name	Name of Department Performing function	Only department performing function	Name of other department/s performing the function	Description of function performed by municipality
DC17	Motheo District Municipality				
FS171	Naledi Local Municipality	Office of Municipal Manager	Yes		IDP Implementation
FS172	Mangaung Local Municipality	Development and Planning	Yes		Town planning management
FS173	Mantsopa Local Municipality	IDP and Organisational Performance	Yes		Implementation and monitoring of PMS

Function Management – Municipal Planning

MDB Code	Municipality Name	Qualification	Years of local Government Experience	Current position Section 57/Acting/Other	Years in existing position	If acting – reason provided
DC17	Motheo District Municipality					
FS171	Naledi Local Municipality	Matric	7	Permanent	4	
FS172	Mangaung Local Municipality	BSC Town and Regional Planning MBA	11	Other	6	
FS173	Mantsopa Local Municipality	Matric	3	Other	2	

Authority - Municipal Planning

MDB Code	Municipality Name	Authority for the function	Authorised as Answered	Understands
DC17	Motheo District	Yes, including FS171 and		No

	Municipality	IDPs		
FS171	Naledi Local Municipality	No	Local	No
FS172	Mangaung Local Municipality	Yes	Local	Yes
FS173	Mantsopa Local Municipality	Yes	Local	Yes

Service Provision - Municipal Planning

MDB Code	Municipality Name	Indicated that the municipality performed the function					
		2002	2003	2004	2005	2006	2007
DC17	Motheo District Municipality	Yes	Yes	Yes	Yes	Yes	No
FS171	Naledi Local Municipality	No	Yes	Yes	Yes	Yes	Yes
FS172	Mangaung Local Municipality	Yes	Yes	Yes	No	Yes	Yes
FS173	Mantsopa Local Municipality	Yes	Yes	Yes	Yes	Yes	Yes

MDB Code	Municipality Name	Municipality makes use of external service provider	Section 78 complete		Service level agreement in place	
			2006	2006	2006	2007
DC17	Motheo District Municipality		No	No		
FS171	Naledi Local Municipality		No	No	No	No
FS172	Mangaung Local Municipality				No	No
FS173	Mantsopa Local Municipality		No	No	No	No

Budget information – Municipal Planning

MDB Code	Municipality Name	Operating Budget for function					
		2002/2003	2003/2004	2004/2005	2005/2006	2006/2007	2007/2008
DC17	Motheo District Municipality	892130		457380	1377280	1800000	0
FS171	Naledi Local Municipality		3920000	62500	138000	151000	3490507
FS172	Mangaung Local Municipality	6253230	5047030	5295620	0	0	27742000
FS173	Mantsopa Local Municipality	3000	80000	61000	215000	68500	914373

MDB Code	Municipality Name	Line item or part allocation				
		2003/2004	2004/2005	2005/2006	2006/2007	2007/2008
DC17	Motheo District Municipality		Line;	Line;	Line;	
FS171	Naledi Local Municipality	Line	Part;	Line;	Part;	Part
FS172	Mangaung Local Municipality	Line	Line;			Part
FS173	Mantsopa Local Municipality	Part	Part;	Line;	Line;	LinePart

MDB	Municipality Name	Per capita budget
-----	-------------------	-------------------

Code					
		2004/2005	2005/2006	2006/2007	2007/2008
DC17	Motheo District Municipality	0.63	1.89	2.47	
FS171	Naledi Local Municipality	2.27	5.02	5.49	127.04
FS172	Mangaung Local Municipality	8.20			42.98
FS173	Mantsopa Local Municipality	1.10	3.88	1.24	16.52

Staffing – Municipal Planning

MDB Code	Municipality Name	Staff Available for the function					
		2002	2003	2004	2005	2006	2007
DC17	Motheo District Municipality	3	5	3	0	1	0
FS171	Naledi Local Municipality		1	1	1	1	2
FS172	Mangaung Local Municipality	14	17	17	0	0	5
FS173	Mantsopa Local Municipality	1	5	2	5	5	2

MDB Code	Municipality Name	Staff per capita ratio				Staff Vacancies		
		2004	2005	2006	2007	2005	2006	2007
DC17	Motheo District Municipality	242754		728263				
FS171	Naledi Local Municipality	27480	27480	27480	13738	2		3
FS172	Mangaung Local Municipality	37967			129088			
FS173	Mantsopa Local Municipality	27671	11068	11068	27671			2

Equipment – Municipal Planning

MDB Code	Municipality Name	Equipment available for the function					
		2002	2003	2004	2005	2006	2007
DC17	Motheo District Municipality	Yes	Yes	Yes	Yes	Yes	No
FS171	Naledi Local Municipality	No	Yes	Yes	Yes	Yes	Yes
FS172	Mangaung Local Municipality	No	Yes	Yes	No	No	Yes
FS173	Mantsopa Local Municipality	Yes	Yes	Yes	Yes	Yes	Yes

Comments and Recommendations – Municipal Planning

Comments:

All three local municipalities perform the municipal planning function and all do so from a single department. FS173 implements and monitors the PMS while FS171 implements the IDP and FS172 manages town planning.

The manager in FS172 is the only one with a tertiary qualification and this is relevant to the position. Local government experience ranges from 3 years in FS173 to 11 years in FS172. None of the managers has been in position for more than 6 years.

All three municipalities have had an increase in budget available since the previous financial year. Per capita budgets range from R16.52 in FS173 to R127.04 in FS171.

There is staff available for the function in each municipality. Both FS171 and FS173 have staff vacancies.

All three local municipalities have equipment available for the function.

In summary:

The local municipalities have capacity to perform this function.

Recommendation for the adjustment of the function:

No adjustments are recommended by the MDB for the 2007/08 assessment period.

3.9 Municipal Health Services

Department rendering the service – Municipal Health Services

MDB Code	Municipality Name	Name of Department Performing function	Only department performing function	Name of other department/s performing the function	Description of function performed by municipality
DC17	Motheo District Municipality	social development	Yes		control environmental pollution control water quality
FS171	Naledi Local Municipality	Community Services	Yes		Water quality control Waste management
FS172	Mangaung Local Municipality	Community and Social Development: Environmental Health Div	Yes		Ensuring food and water safety Monitoring measures Pro-active and reactive inspections Investigations and evaluations Health awareness education
FS173	Mantsopa Local Municipality	Corporate Services	No	Technical Services	Management of environmental health, water quality

Function Management – Municipal Health Services

MDB Code	Municipality Name	Qualification	Years of local Government Experience	Current position Section 57/Acting/Other	Years in existing position	If acting – reason provided
DC17	Motheo District Municipality	Nat Dip nursing	11	MSA Sec 57	3	
FS171	Naledi Local Municipality	Diploma HR	12	Acting	1	Post to be advertised
FS172	Mangaung Local Municipality	Nat Dipl Public Health	22	Permanent	2	
FS173	Mantsopa Local Municipality	IAC Diploma	30	MSA Sec 57	19	

Authority - Municipal Health Services

MDB Code	Municipality Name	Authority for the function	Municipality understood authority	
			Authorised as Answered	Understands
DC17	Motheo District Municipality	Performs its own function	District	Yes
FS171	Naledi Local Municipality	No	Local	No
FS172	Mangaung Local Municipality	No	District	Yes
FS173	Mantsopa Local Municipality	No	District	Yes

Service Provision - Municipal Health Services

MDB Code	Municipality Name	Indicated that the municipality performed the function					
		2002	2003	2004	2005	2006	2007
DC17	Motheo District Municipality	No	Yes	No	Yes	Yes	Yes
FS171	Naledi Local Municipality	Yes	Yes	Yes	Yes	Yes	Yes

FS172	Mangaung Local Municipality	Yes	Yes	Yes	Yes	Yes	Yes
FS173	Mantsopa Local Municipality	Yes	Yes	No	Yes	Yes	Yes

MDB Code	Municipality Name	Municipality makes use of external service provider	Section 78 complete	Service level agreement in place	Municipality makes use of external service provider	Section 78 complete	Service level agreement in place
		2006	2006	2006	2007	2007	2007
DC17	Motheo District Municipality		No	No		No	No
FS171	Naledi Local Municipality		No	No		No	No
FS172	Mangaung Local Municipality		No	No			Yes
FS173	Mantsopa Local Municipality		No	No		No	No

Budget information – Municipal Health Services

MDB Code	Municipality Name	Operating Budget for function					
		2002/2003	2003/2004	2004/2005	2005/2006	2006/2007	2007/2008
DC17	Motheo District Municipality			0	2617960	3900810	9323000
FS171	Naledi Local Municipality	1603780	2209447	507302	60000	58020	50885
FS172	Mangaung Local Municipality	23608080	6069280	5427890	6183010	6492500	7239000
FS173	Mantsopa Local Municipality	2733464	41321050	0	25000	699000	939621

MDB Code	Municipality Name	Line item or part allocation				
		2003/2004	2004/2005	2005/2006	2006/2007	2007/2008
DC17	Motheo District Municipality			Line;	Line;Part;	Line
FS171	Naledi Local Municipality	Line	Line;	Line;	Line;	Line
FS172	Mangaung Local Municipality	Line	Line;	Line;	Line;	Line
FS173	Mantsopa Local Municipality	Line		Line;	Line;	Part

MDB Code	Municipality Name	Per capita budget			
		2004/2005	2005/2006	2006/2007	2007/2008
DC17	Motheo District Municipality		3.59	5.36	12.80
FS171	Naledi Local Municipality	18.46	2.18	2.11	1.85
FS172	Mangaung Local Municipality	8.41	9.58	10.06	11.22
FS173	Mantsopa Local Municipality		0.45	12.63	16.98

Staffing – Municipal Health Services

MDB Code	Municipality Name	Staff Available for the function					
		2002	2003	2004	2005	2006	2007
DC17	Motheo District Municipality			0	1	1	59
FS171	Naledi Local Municipality	16	20	12	1	1	22

FS172	Mangaung Local Municipality	127	22	19	22	20	28
FS173	Mantsopa Local Municipality	38	1	0	1	0	2

MDB Code	Municipality Name	Staff per capita ratio				Staff Vacancies		
		2004	2005	2006	2007	2005	2006	2007
DC17	Motheo District Municipality		728263	728263	12343	4		18
FS171	Naledi Local Municipality	2290	27480	27480	1249	1		
FS172	Mangaung Local Municipality	33971	29338	32272	23051		7	10
FS173	Mantsopa Local Municipality		55342		27671	1		1

Equipment – Municipal Health Services

MDB Code	Municipality Name	Equipment available for the function					
		2002	2003	2004	2005	2006	2007
DC17	Motheo District Municipality	No	No	No	Yes	Yes	Yes
FS171	Naledi Local Municipality	Yes	Yes	Yes	Yes	Yes	Yes
FS172	Mangaung Local Municipality	Yes	Yes	Yes	Yes	Yes	Yes
FS173	Mantsopa Local Municipality	Yes	Yes	No	No	Yes	Yes

Comments and Recommendations – Municipal Health Services

Comments:

DC17 and All three local municipalities perform the municipal health service function and, with the exception of FS173, do so from a single department.

All four managers have tertiary qualifications and more than 10 years of local government experience. The manager for FS173 has been in position the longest (19 years) while none of the remaining managers has been in position for more than three years. There is one acting manager in FS171.

FS171 is the only municipality to receive a decrease in budget available since the previous financial year. Per capita budgets range from R1.85 in FS171 to R16.98 in FS173.

Each municipality has staff available for the function and all have more staff available than they did in 2006. FS171 is the only municipality without staff vacancies.

All four municipalities have equipment available for the function.

In summary:

The four municipalities have capacity to perform this function.

3.10 Municipal public transport

Department rendering the service – Municipal public transport

MDB Code	Municipality Name	Name of Department Performing function	Only department performing function	Name of other department/s performing the function	Description of function performed by municipality
DC17	Motheo District Municipality				
FS171	Naledi Local Municipality				
FS172	Mangaung Local Municipality				

FS173	Mantsopa Local Municipality				
-------	-----------------------------	--	--	--	--

Function Management – Municipal public transport

MDB Code	Municipality Name	Qualification	Years of local Government Experience	Current position Section 57/Acting/Other	Years in existing position	If acting – reason provided
DC17	Motheo District Municipality					
FS171	Naledi Local Municipality					
FS172	Mangaung Local Municipality					
FS173	Mantsopa Local Municipality					

Authority - Municipal public transport

MDB Code	Municipality Name	Authority for the function	Municipality understood authority	
			Authorised as Answered	Understands
DC17	Motheo District Municipality	Yes, including for FS171, FS172, FS173		No
FS171	Naledi Local Municipality	No		Yes
FS172	Mangaung Local Municipality	No		Yes
FS173	Mantsopa Local Municipality	No		Yes

Service Provision - Municipal public transport

MDB Code	Municipality Name	Indicated that the municipality performed the function					
		2002	2003	2004	2005	2006	2007
DC17	Motheo District Municipality	No	No	No	No	No	No
FS171	Naledi Local Municipality	No	No	No	No	No	No
FS172	Mangaung Local Municipality	No	No	Yes	No	No	No
FS173	Mantsopa Local Municipality	No	No	No	No	No	No

MDB Code	Municipality Name	Municipality makes use of external service provider	Section 78 complete	Service level agreement in place	Municipality makes use of external service provider	Section 78 complete	Service level agreement in place
		2006	2006	2006	2007	2007	2007
DC17	Motheo District Municipality						
FS171	Naledi Local Municipality						
FS172	Mangaung Local Municipality						
FS173	Mantsopa Local Municipality						

Budget information – Municipal public transport

MDB Code	Municipality Name	Operating Budget for function					
		2002/2003	2003/2004	2004/2005	2005/2006	2006/2007	2007/2008
DC17	Motheo District Municipality	10000	20000	0	0	0	0
FS171	Naledi Local Municipality			0	0	0	0
FS172	Mangaung Local Municipality			1970190	0	0	0
FS173	Mantsopa Local Municipality			0	0	0	0

MDB Code	Municipality Name	Line item or part allocation				
		2003/2004	2004/2005	2005/2006	2006/2007	2007/2008
DC17	Motheo District Municipality	Line/Part				
FS171	Naledi Local Municipality					
FS172	Mangaung Local Municipality		Line;			
FS173	Mantsopa Local Municipality					

MDB Code	Municipality Name	Per capita budget			
		2004/2005	2005/2006	2006/2007	2007/2008
DC17	Motheo District Municipality				
FS171	Naledi Local Municipality				
FS172	Mangaung Local Municipality	3.05			
FS173	Mantsopa Local Municipality				

Staffing – Municipal public transport

MDB Code	Municipality Name	Staff Available for the function					
		2002	2003	2004	2005	2006	2007
DC17	Motheo District Municipality			0	0	0	0
FS171	Naledi Local Municipality			0	0	0	0
FS172	Mangaung Local Municipality			6	0	0	0
FS173	Mantsopa Local Municipality			0	0	0	0

MDB Code	Municipality Name	Staff per capita ratio				Staff Vacancies		
		2004	2005	2006	2007	2005	2006	2007
DC17	Motheo District Municipality							
FS171	Naledi Local Municipality							
FS172	Mangaung Local Municipality	107574						
FS173	Mantsopa Local Municipality							

Equipment – Municipal public transport

MDB Code	Municipality Name	Equipment available for the function					
		2002	2003	2004	2005	2006	2007
DC17	Motheo District Municipality	No	No	No	No	No	No
FS171	Naledi Local Municipality	No	No	No	No	No	No

FS172	Mangaung Local Municipality	No	No	Yes	No	No	No
FS173	Mantsopa Local Municipality	No	No	No	No	No	No

Comments and Recommendations – Municipal public transport

Comments:

This function is not performed by any of the municipalities.

Recommendation for the adjustment of the function:

The MDB recommends that the adjustment of the municipal public transport function for FS171, FS172 and FS173 to the district municipality is removed.

3.11 Pontoons and ferries

Department rendering the service – Pontoons and ferries

MDB Code	Municipality Name	Name of Department Performing function	Only department performing function	Name of other department/s performing the function	Description of function performed by municipality
DC17	Motheo District Municipality				
FS171	Naledi Local Municipality				
FS172	Mangaung Local Municipality				
FS173	Mantsopa Local Municipality				

Function Management – Pontoons and ferries

MDB Code	Municipality Name	Qualification	Years of local Government Experience	Current position Section 57/Acting/Other	Years in existing position	If acting – reason provided
DC17	Motheo District Municipality					
FS171	Naledi Local Municipality					
FS172	Mangaung Local Municipality					
FS173	Mantsopa Local Municipality					

Authority - Pontoons and ferries

MDB Code	Municipality Name	Authority for the function	Municipality understood authority	
			Authorised as Answered	Understands
DC17	Motheo District Municipality	-		No
FS171	Naledi Local Municipality	Yes		No
FS172	Mangaung Local Municipality	Yes		No
FS173	Mantsopa Local Municipality	Yes		No

Service Provision - Pontoons and ferries

MDB Code	Municipality Name	Indicated that the municipality performed the function

		2002	2003	2004	2005	2006	2007
DC17	Motheo District Municipality	No	No	No	No	No	No
FS171	Naledi Local Municipality	No	No	No	No	No	No
FS172	Mangaung Local Municipality	No	No	No	No	No	No
FS173	Mantsopa Local Municipality	No	No	No	No	No	No

MDB Code	Municipality Name	Municipality makes use of external service provider	Section 78 complete	Service level agreement in place	Municipality makes use of external service provider	Section 78 complete	Service level agreement in place
		2006	2006	2006	2007	2007	2007
DC17	Motheo District Municipality						
FS171	Naledi Local Municipality						
FS172	Mangaung Local Municipality						
FS173	Mantsopa Local Municipality						

Budget information – Pontoons and ferries

MDB Code	Municipality Name	Operating Budget for function					
		2002/2003	2003/2004	2004/2005	2005/2006	2006/2007	2007/2008
DC17	Motheo District Municipality			0	0	0	0
FS171	Naledi Local Municipality			0	0	0	0
FS172	Mangaung Local Municipality			0	0	0	0
FS173	Mantsopa Local Municipality			0	0	0	0

MDB Code	Municipality Name	Line item or part allocation				
		2003/2004	2004/2005	2005/2006	2006/2007	2007/2008
DC17	Motheo District Municipality					
FS171	Naledi Local Municipality					
FS172	Mangaung Local Municipality					
FS173	Mantsopa Local Municipality					

MDB Code	Municipality Name	Per capita budget			
		2004/2005	2005/2006	2006/2007	2007/2008
DC17	Motheo District Municipality				
FS171	Naledi Local Municipality				
FS172	Mangaung Local Municipality				
FS173	Mantsopa Local Municipality				

Staffing – Pontoons and ferries

MDB	Municipality Name	Staff Available for the function

Code		2002	2003	2004	2005	2006	2007
DC17	Motheo District Municipality			0	0	0	0
FS171	Naledi Local Municipality			0	0	0	0
FS172	Mangaung Local Municipality			0	0	0	0
FS173	Mantsopa Local Municipality			0	0	0	0

MDB Code	Municipality Name	Staff per capita ratio				Staff Vacancies		
		2004	2005	2006	2007	2005	2006	2007
DC17	Motheo District Municipality							
FS171	Naledi Local Municipality							
FS172	Mangaung Local Municipality							
FS173	Mantsopa Local Municipality							

Equipment – Pontoons and ferries

MDB Code	Municipality Name	Equipment available for the function					
		2002	2003	2004	2005	2006	2007
DC17	Motheo District Municipality	No	No	No	No	No	No
FS171	Naledi Local Municipality	No	No	No	No	No	No
FS172	Mangaung Local Municipality	No	No	No	No	No	No
FS173	Mantsopa Local Municipality	No	No	No	No	No	No

Comments and Recommendations – Pontoons and ferries

Comments:

This function is not performed by any of the municipalities.

Recommendation for the adjustment of the function:

No adjustments are recommended by the MDB for the 2007/08 assessment period.

3.12 Storm water

Department rendering the service – Storm water

MDB Code	Municipality Name	Name of Department Performing function	Only department performing function	Name of other department/s performing the function	Description of function performed by municipality
DC17	Motheo District Municipality				
FS171	Naledi Local Municipality	Technical Services	Yes		Management and maintenance of drainage systems
FS172	Mangaung Local Municipality	Technical Services	Yes		Management and maintenance of stormwater systems
FS173	Mantsopa Local Municipality	Technical Services	Yes		Manage and maintain stormwater systems

Function Management – Storm water

MDB Code	Municipality Name	Qualification	Years of local Government Experience	Current position Section 57/Acting/Other	Years in existing position	If acting – reason provided
DC17	Motheo District Municipality					
FS171	Naledi Local Municipality	ND Civil Engineering	3	Acting		Post to be advertised
FS172	Mangaung Local Municipality	B Tech Env Health	4	Acting		Post to be advertised
FS173	Mantsopa Local Municipality	BSC Educaion Masters Education	25	MSA Sec 57	3	

Authority - Storm water

MDB Code	Municipality Name	Authority for the function	Municipality understood authority	
			Authorised as Answered	Understands
DC17	Motheo District Municipality	-		No
FS171	Naledi Local Municipality	Yes	Local	Yes
FS172	Mangaung Local Municipality	Yes	Local	Yes
FS173	Mantsopa Local Municipality	Yes	Local	Yes

Service Provision - Storm water

MDB Code	Municipality Name	Indicated that the municipality performed the function					
		2002	2003	2004	2005	2006	2007
DC17	Motheo District Municipality	No	Yes	No	No	Yes	No
FS171	Naledi Local Municipality	No	Yes	Yes	Yes	Yes	Yes
FS172	Mangaung Local Municipality	Yes	Yes	Yes	Yes	Yes	Yes
FS173	Mantsopa Local Municipality	Yes	Yes	Yes	Yes	Yes	Yes

MDB Code	Municipality Name	Municipality makes use of external service provider	Section 78 complete	Service level agreement in place	Municipality makes use of external service provider	Section 78 complete	Service level agreement in place
		2006	2006	2006	2007	2007	2007
DC17	Motheo District Municipality		No	No			
FS171	Naledi Local Municipality		No	No		No	No
FS172	Mangaung Local Municipality		Yes	Yes		No	No
FS173	Mantsopa Local Municipality		No	No		No	No

Budget information – Storm water

MDB Code	Municipality Name	Operating Budget for function					
		2002/2003	2003/2004	2004/2005	2005/2006	2006/2007	2007/2008

DC17	Motheo District Municipality			0	3450000	395510	0
FS171	Naledi Local Municipality		412350	412350	1901212	2800000	2344155
FS172	Mangaung Local Municipality	Part of another budget	67792700	32771220	29164310	85006440	124024000
FS173	Mantsopa Local Municipality	Part of another budget	300000	0	100000	110000	6578441

MDB Code	Municipality Name	Line item or part allocation				
		2003/2004	2004/2005	2005/2006	2006/2007	2007/2008
DC17	Motheo District Municipality			Line;	Line;	
FS171	Naledi Local Municipality	Part	Part;	Line;	Part;	Part
FS172	Mangaung Local Municipality	Line/Part	Line;	Line;	Line;	Part
FS173	Mantsopa Local Municipality	Part		Line;	Line;	Part

MDB Code	Municipality Name	Per capita budget			
		2004/2005	2005/2006	2006/2007	2007/2008
DC17	Motheo District Municipality		4.74	0.54	
FS171	Naledi Local Municipality	15.01	69.19	101.89	85.32
FS172	Mangaung Local Municipality	50.77	45.19	131.70	192.15
FS173	Mantsopa Local Municipality		1.81	1.99	118.87

Staffing – Storm water

MDB Code	Municipality Name	Staff Available for the function					
		2002	2003	2004	2005	2006	2007
DC17	Motheo District Municipality			0	0	0	0
FS171	Naledi Local Municipality		12	12	12	12	12
FS172	Mangaung Local Municipality	294	79	150	140	0	260
FS173	Mantsopa Local Municipality	24	24	42	0	3	40

MDB Code	Municipality Name	Staff per capita ratio				Staff Vacancies		
		2004	2005	2006	2007	2005	2006	2007
DC17	Motheo District Municipality							
FS171	Naledi Local Municipality	2290	2290	2290	2290			5
FS172	Mangaung Local Municipality	4303	4610		2482		105	
FS173	Mantsopa Local Municipality	1318		18447	1384			5

Equipment – Storm water

MDB Code	Municipality Name	Equipment available for the function					
		2002	2003	2004	2005	2006	2007
DC17	Motheo District Municipality	No	No	No	No	No	No
FS171	Naledi Local Municipality	No	No	Yes	Yes	Yes	Yes
FS172	Mangaung Local Municipality	Yes	Yes	Yes	Yes	Yes	Yes

FS173	Mantsopa Local Municipality	Yes	Yes	No	Yes	Yes	Yes
-------	-----------------------------	-----	-----	----	-----	-----	-----

Comments and Recommendations – Storm water

Comments:

All three local municipalities perform the storm water function and all do so from a single department. Each function has indicated the management and maintenance of stormwater systems as the main aspect of the function.

All three managers have tertiary qualifications. The managers for FS171 and FS172 are in acting positions. The manager for FS173 has 25 years of local government experience and has been in the position for 3 years.

There is budget available for this function in each municipality. FS171 was the only municipality to have a decrease in budget available since the previous financial year. Per capita budgets range from R85.32 in FS171 to R192.15 in FS172.

All three municipalities have staff available to perform the function. FS171 and FS173 each have five staff vacancies.

All three local municipalities have equipment available for the function.

In summary:

The local municipalities have capacity to perform this function.

Recommendation for the adjustment of the function:

No adjustments are recommended by the MDB for the 2007/08 assessment period.

3.13 Trading regulations

Department rendering the service – Trading regulations

MDB Code	Municipality Name	Name of Department Performing function	Only department performing function	Name of other department/s performing the function	Description of function performed by municipality
DC17	Motheo District Municipality				
FS171	Naledi Local Municipality				
FS172	Mangaung Local Municipality				
FS173	Mantsopa Local Municipality	Corporate Services	Yes		Licencing Certification Inspection

Function Management – Trading regulations

MDB Code	Municipality Name	Qualification	Years of local Government Experience	Current position Section 57/Acting/Other	Years in existing position	If acting – reason provided
DC17	Motheo District Municipality					
FS171	Naledi Local Municipality					
FS172	Mangaung Local Municipality					
FS173	Mantsopa Local Municipality	IAC Diploma	30	MSA Sec 57	19	

Authority - Trading regulations

MDB Code	Municipality Name	Authority for the function	Municipality understood authority	
			Authorised as Answered	Understands
DC17	Motheo District Municipality	-		No
FS171	Naledi Local Municipality	Yes		No
FS172	Mangaung Local Municipality	Yes		No
FS173	Mantsopa Local Municipality	Yes	Local	Yes

Service Provision - Trading regulations

MDB Code	Municipality Name	Indicated that the municipality performed the function					
		2002	2003	2004	2005	2006	2007
DC17	Motheo District Municipality	No	Yes	No	No	No	No
FS171	Naledi Local Municipality	No	Yes	No	Yes	No	No
FS172	Mangaung Local Municipality	No	No	No	No	No	No
FS173	Mantsopa Local Municipality	Yes	Yes	No	No	No	Yes

MDB Code	Municipality Name	Municipality makes use of external service provider	Section 78 complete	Service level agreement in place	Municipality makes use of external service provider	Section 78 complete	Service level agreement in place
		2006	2006	2006	2007	2007	2007
DC17	Motheo District Municipality						
FS171	Naledi Local Municipality						
FS172	Mangaung Local Municipality						
FS173	Mantsopa Local Municipality					No	No

Budget information – Trading regulations

MDB Code	Municipality Name	Operating Budget for function					
		2002/2003	2003/2004	2004/2005	2005/2006	2006/2007	2007/2008
DC17	Motheo District Municipality			0	0	0	0
FS171	Naledi Local Municipality		250000	0	479999.99	0	0
FS172	Mangaung Local Municipality			0	0	0	0
FS173	Mantsopa Local Municipality	5987		0	500	0	939621

MDB Code	Municipality Name	Line item or part allocation				
		2003/2004	2004/2005	2005/2006	2006/2007	2007/2008
DC17	Motheo District Municipality					
FS171	Naledi Local Municipality	Part		Line;		
FS172	Mangaung Local Municipality					

FS173	Mantsopa Local Municipality			Line:		Part
-------	-----------------------------	--	--	-------	--	------

MDB Code	Municipality Name	Per capita budget			
		2004/2005	2005/2006	2006/2007	2007/2008
DC17	Motheo District Municipality				
FS171	Naledi Local Municipality		17.47		
FS172	Mangaung Local Municipality				
FS173	Mantsopa Local Municipality		0.01		16.98

Staffing – Trading regulations

MDB Code	Municipality Name	Staff Available for the function					
		2002	2003	2004	2005	2006	2007
DC17	Motheo District Municipality			0	0	0	0
FS171	Naledi Local Municipality		2	0	1	0	0
FS172	Mangaung Local Municipality			0	0	0	0
FS173	Mantsopa Local Municipality	2	3	0	0	0	2

MDB Code	Municipality Name	Staff per capita ratio				Staff Vacancies		
		2004	2005	2006	2007	2005	2006	2007
DC17	Motheo District Municipality							
FS171	Naledi Local Municipality		27480					
FS172	Mangaung Local Municipality							
FS173	Mantsopa Local Municipality				27671			2

Equipment – Trading regulations

MDB Code	Municipality Name	Equipment available for the function					
		2002	2003	2004	2005	2006	2007
DC17	Motheo District Municipality	No	No	No	No	No	No
FS171	Naledi Local Municipality	No	Yes	No	Yes	No	No
FS172	Mangaung Local Municipality	No	No	No	No	No	No
FS173	Mantsopa Local Municipality	No	No	No	No	No	Yes

Comments and Recommendations – Trading regulations

Comments:

FS173 performs the trading regulations function and does so from a single department.

The manager has a tertiary qualification, 30 years of local government experience and has been in the position for 19 years.

FS173 has budget available for this function which is an increase on the previous financial year.

There are two staff members available for the function and two vacancies. FS173 has equipment for the function.

In summary:

FS173 has capacity to perform the function.

Recommendation for the adjustment of the function:

No adjustments are recommended by the MDB for the 2007/08 assessment period.

3.14 Water (Potable)**Department rendering the service – Water (Potable)**

MDB Code	Municipality Name	Name of Department Performing function	Only department performing function	Name of other department/s performing the function	Description of function performed by municipality
DC17	Motheo District Municipality	Technical services			
FS171	Naledi Local Municipality	Technical Services	Yes		Water supply to households
FS172	Mangaung Local Municipality	Technical Services	Yes		Supply water to households
FS173	Mantsopa Local Municipality	Technical Services	Yes		Water supply Purification

Function Management – Water (Potable)

MDB Code	Municipality Name	Qualification	Years of local Government Experience	Current position Section 57/Acting/Other	Years in existing position	If acting – reason provided
DC17	Motheo District Municipality					
FS171	Naledi Local Municipality	Diploma Civil Engineering	3	Acting		Post to be advertised
FS172	Mangaung Local Municipality	B Tech Env Health	4	Acting		Post to be advertised
FS173	Mantsopa Local Municipality	Masters Education BSC Education	25	MSA Sec 57	3	

Authority - Water (Potable)

MDB Code	Municipality Name	Authority for the function	Municipality understood authority	
			Authorised as Answered	Understands
DC17	Motheo District Municipality	No		No
FS171	Naledi Local Municipality	Yes	Local	Yes
FS172	Mangaung Local Municipality	Yes	Local	Yes
FS173	Mantsopa Local Municipality	Yes	Local	Yes

Service Provision - Water (Potable)

MDB Code	Municipality Name	Indicated that the municipality performed the function					
		2002	2003	2004	2005	2006	2007
DC17	Motheo District Municipality	No	No	No	Yes	No	No
FS171	Naledi Local Municipality	Yes	Yes	No	Yes	No	Yes
FS172	Mangaung Local Municipality	Yes	Yes	Yes	Yes	No	Yes
FS173	Mantsopa Local	Yes	Yes	Yes	Yes	Yes	Yes

	Municipality						
--	--------------	--	--	--	--	--	--

MDB Code	Municipality Name	Municipality makes use of external service provider	Section 78 complete	Service level agreement in place	Municipality makes use of external service provider	Section 78 complete	Service level agreement in place
		2006	2006	2006	2007	2007	2007
DC17	Motheo District Municipality		No	No			
FS171	Naledi Local Municipality		No	Yes		No	No
FS172	Mangaung Local Municipality	Bloemwater	No	No		No	No
FS173	Mantsopa Local Municipality		No	No		No	No

Budget information – Water (Potable)

MDB Code	Municipality Name	Operating Budget for function					
		2002/2003	2003/2004	2004/2005	2005/2006	2006/2007	2007/2008
DC17	Motheo District Municipality		6038750	0	3955000	12154570	0
FS171	Naledi Local Municipality	220482	5455037	6324009	6210678	8045836	7241061
FS172	Mangaung Local Municipality	161405080	183719960	228257340	247809400	238565190	26424000
FS173	Mantsopa Local Municipality	6942904	8074098	9019119	370000	400000	15091505

MDB Code	Municipality Name	Line item or part allocation				
		2003/2004	2004/2005	2005/2006	2006/2007	2007/2008
DC17	Motheo District Municipality	Line		Line;	Line;Part;	
FS171	Naledi Local Municipality	Part	Line;	Line;	Line;	Line
FS172	Mangaung Local Municipality	Line	Line;	Line;	Line;	Line
FS173	Mantsopa Local Municipality	Line	Line;	Line;	Line;	Line

MDB Code	Municipality Name	Per capita budget			
		2004/2005	2005/2006	2006/2007	2007/2008
DC17	Motheo District Municipality		5.43	16.69	
FS171	Naledi Local Municipality	230.13	226.01	292.79	263.54
FS172	Mangaung Local Municipality	353.65	383.94	369.62	40.94
FS173	Mantsopa Local Municipality	162.97	6.69	7.23	272.70

Income information – Water (Potable)

MDB Code	Operating Income		Function Income as a % of Operation Income	
	Actual 2006/2007	Estimated 2007/2008	2006/2007	2007/2008
	DC17		0	
FS171	8576264	7241061	31.54%	26.84%
FS172	216771000	26424000	13.51%	1.62%

FS173	33322677	15091505	52.44%	10.11%
-------	----------	----------	--------	--------

Staffing – Water (Potable)

MDB Code	Municipality Name	Staff Available for the function					
		2002	2003	2004	2005	2006	2007
DC17	Motheo District Municipality			0	0	0	0
FS171	Naledi Local Municipality	11	24	24	24	24	24
FS172	Mangaung Local Municipality	292	301	302	292	234	230
FS173	Mantsopa Local Municipality	25	25	31	24	24	50

MDB Code	Municipality Name	Staff per capita ratio				Staff Vacancies		
		2004	2005	2006	2007	2005	2006	2007
DC17	Motheo District Municipality							
FS171	Naledi Local Municipality	1145	1145	1145	1145			10
FS172	Mangaung Local Municipality	2137	2210	2758	2806	52		
FS173	Mantsopa Local Municipality	1785	2306	2306	1107			5

Equipment – Water (Potable)

MDB Code	Municipality Name	Equipment available for the function					
		2002	2003	2004	2005	2006	2007
DC17	Motheo District Municipality	No	No	No	No	No	No
FS171	Naledi Local Municipality	Yes	Yes	Yes	Yes	Yes	Yes
FS172	Mangaung Local Municipality	Yes	Yes	Yes	Yes	Yes	Yes
FS173	Mantsopa Local Municipality	Yes	No	Yes	Yes	Yes	Yes

Comments and Recommendations – Water (Potable)

Comments:

All three local municipalities perform the water function and all do so from a single department. Each municipality has indicated water supply as one of the main aspects of the function.

All three managers have tertiary qualifications. The managers for FS171 and FS172 are in acting positions. The manager for FS173 has 25 years of local government experience and has been in the position for 3 years.

FS173 was the only municipality to receive an increase in budget since the previous financial year. The other two municipalities had decreased budgets in 2007/08. All three municipalities use line items for this function. Per capita budgets range from R40.94 in FS172 to R272.70 in FS173. The function income contributes to almost 27% of operating income in FS171 and just 1.62% of operating income in FS172.

There is staff available for the function in each municipality. FS172 has the most staff available (230) while FS171 has 24 staff members available. FS171 and FS173 have staff vacancies.

All three local municipalities have equipment available for the function.

In summary:

The local municipalities have capacity to perform this function.

3.15 Sanitation

Department rendering the service – Sanitation

MDB Code	Municipality Name	Name of Department Performing function	Only department performing function	Name of other department/s performing the function	Description of function performed by municipality
DC17	Motheo District Municipality				
FS171	Naledi Local Municipality				
FS172	Mangaung Local Municipality	Technical Services	Yes		Managing and maintaining sewer drainage system
FS173	Mantsopa Local Municipality	Technical Services	Yes		Manage and maintain sewerage system

Function Management – Sanitation

MDB Code	Municipality Name	Qualification	Years of local Government Experience	Current position Section 57/Acting/Other	Years in existing position	If acting – reason provided
DC17	Motheo District Municipality					
FS171	Naledi Local Municipality					
FS172	Mangaung Local Municipality	B Tech Environ Health	4	Acting		Post to be advertised
FS173	Mantsopa Local Municipality	Masters Education BSC Education	25	MSA Sec 57	3	

Authority - Sanitation

MDB Code	Municipality Name	Authority for the function	Municipality understood authority	
			Authorised as Answered	Understands
DC17	Motheo District Municipality	No		No
FS171	Naledi Local Municipality	Yes		No
FS172	Mangaung Local Municipality	Yes	Local	Yes
FS173	Mantsopa Local Municipality	Yes	Local	Yes

Service Provision - Sanitation

MDB Code	Municipality Name	Indicated that the municipality performed the function					
		2002	2003	2004	2005	2006	2007
DC17	Motheo District Municipality	No	No	No	Yes	No	No
FS171	Naledi Local Municipality	Yes	Yes	Yes	Yes	Yes	No
FS172	Mangaung Local Municipality	Yes	Yes	Yes	No	Yes	Yes
FS173	Mantsopa Local Municipality	Yes	Yes	Yes	Yes	Yes	Yes

MDB Code	Municipality Name	Municipality makes use of external service provider	Section 78 complete	Service level agreement in place	Municipality makes use of external service provider	Section 78 complete	Service level agreement in place
		2006	2006	2006	2007	2007	2007
DC17	Motheo District Municipality		No	No			
FS171	Naledi Local Municipality		No	No			
FS172	Mangaung Local Municipality		No	No		No	No
FS173	Mantsopa Local Municipality		No	No		No	No

Budget information – Sanitation

MDB Code	Municipality Name	Operating Budget for function					
		2002/2003	2003/2004	2004/2005	2005/2006	2006/2007	2007/2008
DC17	Motheo District Municipality		19594000	0	19435140	2255770	0
FS171	Naledi Local Municipality	5141000	5032015	4414472	4038811	3493948	0
FS172	Mangaung Local Municipality	32206280	118532840	58553660	0	64762760	114293000
FS173	Mantsopa Local Municipality	3213171	8297539	9683655	135000	148000	68058061

MDB Code	Municipality Name	Line item or part allocation				
		2003/2004	2004/2005	2005/2006	2006/2007	2007/2008
DC17	Motheo District Municipality	Line		Line;	Part;	
FS171	Naledi Local Municipality	Line	Line;	Line;	Line;	
FS172	Mangaung Local Municipality	Line	Line;		Line;	Line
FS173	Mantsopa Local Municipality	Line	Line;	Line;	Line;	Line

MDB Code	Municipality Name	Per capita budget			
		2004/2005	2005/2006	2006/2007	2007/2008
DC17	Motheo District Municipality		26.69	3.10	
FS171	Naledi Local Municipality	160.64	146.97	127.15	
FS172	Mangaung Local Municipality	90.72		100.34	177.08
FS173	Mantsopa Local Municipality	174.98	2.44	2.67	1229.79

Income information – Sanitation

MDB Code	Operating Income		Function Income as a % of Operation Income	
	Actual 2006/2007	Estimated 2007/2008	2006/2007	2007/2008
	DC17		0	
FS171		0		0.00%
FS172	84455000	114293000	5.26%	7.01%
FS173	38565076	68058061	60.69%	45.59%

Staffing – Sanitation

MDB Code	Municipality Name	Staff Available for the function					
		2002	2003	2004	2005	2006	2007
DC17	Motheo District Municipality			0	0	0	0
FS171	Naledi Local Municipality	25	28	25	25	25	0
FS172	Mangaung Local Municipality	219	215	473	0	94	235
FS173	Mantsopa Local Municipality	43	43	70	46	46	45

MDB Code	Municipality Name	Staff per capita ratio				Staff Vacancies		
		2004	2005	2006	2007	2005	2006	2007
DC17	Motheo District Municipality							
FS171	Naledi Local Municipality	1099	1099	1099				
FS172	Mangaung Local Municipality	1365		6866	2747		37	
FS173	Mantsopa Local Municipality	791	1203	1203	1230	5		5

Equipment – Sanitation

MDB Code	Municipality Name	Equipment available for the function					
		2002	2003	2004	2005	2006	2007
DC17	Motheo District Municipality	No	No	No	No	No	No
FS171	Naledi Local Municipality	Yes	No	Yes	Yes	Yes	No
FS172	Mangaung Local Municipality	Yes	Yes	Yes	No	Yes	Yes
FS173	Mantsopa Local Municipality	Yes	Yes	Yes	Yes	Yes	Yes

Comments and Recommendations – Sanitation**Comments:**

FS172 and FS173 perform the sanitation function. Both use a single department to do so and have indicated the management and maintenance of sewerage systems as one of the main aspects of the function.

Both managers have tertiary qualifications. The manager for FS172 is in an acting position. The manager for FS173 has 25 years of local government experience and has been in the position for 3 years.

The two local municipalities have budget available for the function and both have had increases in budget since the previous financial year. Both municipalities use line items for this function. Per capita budgets range from R177.08 in FS172 to R1229.79 in FS173. The function income contributes to just over 7% of operating income in FS172 and almost 46% of operating income in FS173.

Both municipalities have staff available for the function. FS172 has the most staff available (235) while FS173 had 45 staff members available as well as 5 vacancies.

FS172 and FS173 have equipment available to perform the function.

In summary:

FS172 and FS173 have capacity to perform this function.

3.16 Beaches and Amusement facilities

Department rendering the service – Beaches and Amusement facilities

MDB Code	Municipality Name	Name of Department Performing function	Only department performing function	Name of other department/s performing the function	Description of function performed by municipality
DC17	Motheo District Municipality				
FS171	Naledi Local Municipality				
FS172	Mangaung Local Municipality				
FS173	Mantsopa Local Municipality				

Function Management – Beaches and Amusement facilities

MDB Code	Municipality Name	Qualification	Years of local Government Experience	Current position Section 57/Acting/Other	Years in existing position	If acting – reason provided
DC17	Motheo District Municipality					
FS171	Naledi Local Municipality					
FS172	Mangaung Local Municipality					
FS173	Mantsopa Local Municipality					

Authority - Beaches and Amusement facilities

MDB Code	Municipality Name	Authority for the function	Municipality understood authority	
			Authorised as Answered	Understands
DC17	Motheo District Municipality	-		No
FS171	Naledi Local Municipality	Yes		No
FS172	Mangaung Local Municipality	Yes		No
FS173	Mantsopa Local Municipality	Yes		No

Service Provision - Beaches and Amusement facilities

MDB Code	Municipality Name	Indicated that the municipality performed the function					
		2002	2003	2004	2005	2006	2007
DC17	Motheo District Municipality	No	No	No	No	No	No
FS171	Naledi Local Municipality	No	No	No	No	No	No
FS172	Mangaung Local Municipality	No	No	No	No	No	No
FS173	Mantsopa Local Municipality	No	No	No	No	No	No

MDB Code	Municipality Name	Municipality makes use of external service provider	Section 78 complete	Service level agreement in place	Municipality makes use of external service provider	Section 78 complete	Service level agreement in place
		2006	2006	2006	2007	2007	2007
DC17	Motheo District Municipality						
FS171	Naledi Local Municipality						
FS172	Mangaung Local Municipality						
FS173	Mantsopa Local Municipality						

Budget information – Beaches and Amusement facilities

MDB Code	Municipality Name	Operating Budget for function					
		2002/2003	2003/2004	2004/2005	2005/2006	2006/2007	2007/2008
DC17	Motheo District Municipality			0	0	0	0
FS171	Naledi Local Municipality			0	0	0	0
FS172	Mangaung Local Municipality			0	0	0	0
FS173	Mantsopa Local Municipality			0	0	0	0

MDB Code	Municipality Name	Line item or part allocation				
		2003/2004	2004/2005	2005/2006	2006/2007	2007/2008
DC17	Motheo District Municipality					
FS171	Naledi Local Municipality					
FS172	Mangaung Local Municipality					
FS173	Mantsopa Local Municipality					

MDB Code	Municipality Name	Per capita budget			
		2004/2005	2005/2006	2006/2007	2007/2008
DC17	Motheo District Municipality				
FS171	Naledi Local Municipality				
FS172	Mangaung Local Municipality				
FS173	Mantsopa Local Municipality				

Staffing – Beaches and Amusement facilities

MDB Code	Municipality Name	Staff Available for the function					
		2002	2003	2004	2005	2006	2007
DC17	Motheo District Municipality			0	0	0	0
FS171	Naledi Local Municipality			0	0	0	0
FS172	Mangaung Local Municipality			0	0	0	0
FS173	Mantsopa Local Municipality			0	0	0	0

MDB Code	Municipality Name	Staff per capita ratio				Staff Vacancies		
		2004	2005	2006	2007	2005	2006	2007
DC17	Motheo District Municipality							
FS171	Naledi Local Municipality							
FS172	Mangaung Local Municipality							
FS173	Mantsopa Local Municipality							

Equipment – Beaches and Amusement facilities

MDB Code	Municipality Name	Equipment available for the function					
		2002	2003	2004	2005	2006	2007
DC17	Motheo District Municipality	No	No	No	No	No	No
FS171	Naledi Local Municipality	No	No	No	No	No	No
FS172	Mangaung Local Municipality	No	No	No	No	No	No
FS173	Mantsopa Local Municipality	No	No	No	No	No	No

Comments and Recommendations – Beaches and Amusement facilities

<p>Comments: This function is not performed by any of the municipalities.</p>
<p>Recommendation for the adjustment of the function: No adjustments are recommended by the MDB for the 2007/08 assessment period.</p>

3.17 Billboards and the display of advertisements in public places

Department rendering the service – Billboards and the display of advertisements in public places

MDB Code	Municipality Name	Name of Department Performing function	Only department performing function	Name of other department/s performing the function	Description of function performed by municipality
DC17	Motheo District Municipality				
FS171	Naledi Local Municipality				
FS172	Mangaung Local Municipality				
FS173	Mantsopa Local Municipality				

Function Management – Billboards and the display of advertisements in public places

MDB Code	Municipality Name	Qualification	Years of local Government Experience	Current position Section 57/Acting/Other	Years in existing position	If acting – reason provided
DC17	Motheo District Municipality					
FS171	Naledi Local Municipality					
FS172	Mangaung Local Municipality					
FS173	Mantsopa Local Municipality					

Authority - Billboards and the display of advertisements in public places

MDB Code	Municipality Name	Authority for the function	Municipality understood authority	
			Authorised as Answered	Understands
DC17	Motheo District Municipality	-		No
FS171	Naledi Local Municipality	Yes		No
FS172	Mangaung Local Municipality	Yes		No
FS173	Mantsopa Local Municipality	Yes		No

Service Provision - Billboards and the display of advertisements in public places

MDB Code	Municipality Name	Indicated that the municipality performed the function					
		2002	2003	2004	2005	2006	2007
DC17	Motheo District Municipality	No	Yes	No	No	No	No
FS171	Naledi Local Municipality	No	Yes	No	Yes	No	No
FS172	Mangaung Local Municipality	Yes	Yes	No	No	No	No
FS173	Mantsopa Local Municipality	Yes	No	No	Yes	Yes	No

MDB Code	Municipality Name	Municipality makes use of external service provider	Section 78 complete	Service level agreement in place	Municipality makes use of external service provider	Section 78 complete	Service level agreement in place
		2006	2006	2006	2007	2007	2007
DC17	Motheo District Municipality						
FS171	Naledi Local Municipality						
FS172	Mangaung Local Municipality						
FS173	Mantsopa Local Municipality		No	No			

Budget information – Billboards and the display of advertisements in public places

MDB Code	Municipality Name	Operating Budget for function					
		2002/2003	2003/2004	2004/2005	2005/2006	2006/2007	2007/2008
DC17	Motheo District Municipality		300000	0	0	0	0
FS171	Naledi Local Municipality	100000	1000	0	0	0	0
FS172	Mangaung Local Municipality		16610000	0	0	0	0
FS173	Mantsopa Local Municipality			0	54560.6	55000	0

MDB Code	Municipality Name	Line item or part allocation				
		2003/2004	2004/2005	2005/2006	2006/2007	2007/2008
DC17	Motheo District Municipality	Line				
FS171	Naledi Local Municipality	Line				
FS172	Mangaung Local Municipality	Part				
FS173	Mantsopa Local Municipality			Line;	Line;	

MDB Code	Municipality Name	Per capita budget			
		2004/2005	2005/2006	2006/2007	2007/2008
DC17	Motheo District Municipality				
FS171	Naledi Local Municipality				
FS172	Mangaung Local Municipality				
FS173	Mantsopa Local Municipality		0.99	0.99	

Staffing – Billboards and the display of advertisements in public places

MDB Code	Municipality Name	Staff Available for the function					
		2002	2003	2004	2005	2006	2007
DC17	Motheo District Municipality			0	0	0	0
FS171	Naledi Local Municipality		1	0	1	0	0
FS172	Mangaung Local Municipality	1		0	0	0	0
FS173	Mantsopa Local Municipality	1		0	1	1	0

MDB Code	Municipality Name	Staff per capita ratio				Staff Vacancies		
		2004	2005	2006	2007	2005	2006	2007
DC17	Motheo District Municipality							
FS171	Naledi Local Municipality		27480					
FS172	Mangaung Local Municipality							
FS173	Mantsopa Local Municipality		55342	55342				

Equipment – Billboards and the display of advertisements in public places

MDB Code	Municipality Name	Equipment available for the function					
		2002	2003	2004	2005	2006	2007
DC17	Motheo District Municipality	No	No	No	No	No	No
FS171	Naledi Local Municipality	No	No	No	No	No	No
FS172	Mangaung Local Municipality	Yes	No	No	No	No	No
FS173	Mantsopa Local Municipality	Yes	No	No	No	No	No

Comments and Recommendations – Billboards and the display of advertisements in public places

Comments:

This function is not performed by any of the municipalities.

Recommendation for the adjustment of the function:

No adjustments are recommended by the MDB for the 2007/08 assessment period.

3.18 Cemeteries, funeral parlours and crematoria

Department rendering the service – Cemeteries, funeral parlours and crematoria

MDB Code	Municipality Name	Name of Department Performing function	Only department performing function	Name of other department/s performing the function	Description of function performed by municipality
DC17	Motheo District Municipality				
FS171	Naledi Local Municipality	Community Services	Yes		Control and management of cemeteries
FS172	Mangaung Local Municipality	Parks and Cemeteries	No	Environmental Health	Funeral parlours Registration and monitoring
FS173	Mantsopa Local Municipality	Corporate Services	No	Technical Services	Providing graves Pauper burial Inspection of parlours

Function Management – Cemeteries, funeral parlours and crematoria

MDB Code	Municipality Name	Qualification	Years of local Government Experience	Current position Section 57/Acting/Other	Years in existing position	If acting – reason provided
DC17	Motheo District Municipality					
FS171	Naledi Local Municipality	Diploma HR	12	Acting	1	Post to be advertised
FS172	Mangaung Local Municipality	Master Public Administration	3	Permanent	3	
FS173	Mantsopa Local Municipality	IAC Diploma	30	MSA Sec 57	19	

Authority - Cemeteries, funeral parlours and crematoria

MDB Code	Municipality Name	Authority for the function	Municipality understood authority	
			Authorised as Answered	Understands
DC17	Motheo District Municipality	No		No
FS171	Naledi Local Municipality	Yes, including DM function	Local	Yes
FS172	Mangaung Local Municipality	Yes, including DM function	Local	Yes
FS173	Mantsopa Local Municipality	Yes, including DM function	Local	Yes

Service Provision - Cemeteries, funeral parlours and crematoria

MDB Code	Municipality Name	Indicated that the municipality performed the function					
		2002	2003	2004	2005	2006	2007
DC17	Motheo District Municipality	Yes	No	No	Yes	No	No
FS171	Naledi Local Municipality	Yes	Yes	Yes	Yes	Yes	Yes
FS172	Mangaung Local Municipality	Yes	Yes	Yes	Yes	No	Yes
FS173	Mantsopa Local Municipality	Yes	Yes	Yes	Yes	Yes	Yes

MDB Code	Municipality Name	Municipality makes use of external service provider	Section 78 complete	Service level agreement in place	Municipality makes use of external service provider	Section 78 complete	Service level agreement in place
		2006	2006	2006	2007	2007	2007
DC17	Motheo District Municipality		No	No			
FS171	Naledi Local Municipality		No	No		No	No
FS172	Mangaung Local Municipality		No	No		No	No
FS173	Mantsopa Local Municipality		No	No		No	No

Budget information – Cemeteries, funeral parlours and crematoria

MDB Code	Municipality Name	Operating Budget for function					
		2002/2003	2003/2004	2004/2005	2005/2006	2006/2007	2007/2008
DC17	Motheo District Municipality	30000		0	1500000	1200000	0
FS171	Naledi Local Municipality	714000	112110	80000	950663	1002238	50888
FS172	Mangaung Local Municipality	2680890	2608890	3011580	2963170	8610.4	13518270
FS173	Mantsopa Local Municipality	104373	94536	50557	6000	18951	71324

MDB Code	Municipality Name	Line item or part allocation				
		2003/2004	2004/2005	2005/2006	2006/2007	2007/2008
DC17	Motheo District Municipality			Line;	Part;	
FS171	Naledi Local Municipality	Part	Part;	Line;	Part;	Part
FS172	Mangaung Local Municipality	Line	Line;	Line;	Line;	Part
FS173	Mantsopa Local Municipality	Line	Line;	Line;	Line;	Line

MDB Code	Municipality Name	Per capita budget			
		2004/2005	2005/2006	2006/2007	2007/2008
DC17	Motheo District Municipality		2.06	1.65	
FS171	Naledi Local Municipality	2.91	34.59	36.47	1.85
FS172	Mangaung Local Municipality	4.67	4.59	0.01	20.94
FS173	Mantsopa Local Municipality	0.91	0.11	0.34	1.29

Staffing – Cemeteries, funeral parlours and crematoria

MDB Code	Municipality Name	Staff Available for the function					
		2002	2003	2004	2005	2006	2007
DC17	Motheo District Municipality			0	0	0	0
FS171	Naledi Local Municipality		3	3	3	3	5
FS172	Mangaung Local Municipality	50	50	45	45	47	47
FS173	Mantsopa Local Municipality	8	8	9	8	8	2

MDB Code	Municipality Name	Staff per capita ratio				Staff Vacancies		
		2004	2005	2006	2007	2005	2006	2007
DC17	Motheo District Municipality							
FS171	Naledi Local Municipality	9160	9160	9160	5495			
FS172	Mangaung Local Municipality	14343	14343	13733	13733		4	2
FS173	Mantsopa Local Municipality	6149	6918	6918	27671			2

Equipment – Cemeteries, funeral parlours and crematoria

MDB Code	Municipality Name	Equipment available for the function					
		2002	2003	2004	2005	2006	2007
DC17	Motheo District Municipality	No	No	No	No	No	No
FS171	Naledi Local Municipality	No	Yes	Yes	Yes	Yes	Yes
FS172	Mangaung Local Municipality	Yes	Yes	No	No	Yes	Yes
FS173	Mantsopa Local Municipality	Yes	Yes	Yes	Yes	Yes	Yes

Comments and Recommendations – Cemeteries, funeral parlours and crematoria

Comments:

All three local municipalities perform the cemeteries function although FS171 is the only one to do so from a single department.

The managers all have tertiary qualifications and the manager in FS171 is in an acting position. The manager in FS173 has 30 years of local government experience and has been in the position for 19 years while the manager in FS172 has three years of experience and has been in the position for three years.

FS171 had a decrease in budget available since the previous financial year. The other two municipalities had increases in budget. Per capita budgets range from R1.29 in FS173 to R20.94 in FS172.

There is staff available for the function in each municipality. FS172 has the most staff available (47). Both FS172 and FS173 have two staff vacancies.

All three local municipalities have equipment available for the function.

In summary:

The local municipalities have capacity to perform this function.

Recommendation for the adjustment of the function:

No adjustments are recommended by the MDB for the 2007/08 assessment period.

3.19 Cleansing

Department rendering the service – Cleansing

MDB Code	Municipality Name	Name of Department Performing function	Only department performing function	Name of other department/s performing the function	Description of function performed by municipality
DC17	Motheo District Municipality				
FS171	Naledi Local Municipality	Community Services	Yes		Street sweeping Verge cleaning

FS172	Mangaung Local Municipality	Technical Services	Yes		Cleaning streets and open spaces
FS173	Mantsopa Local Municipality	Technical Services	Yes		Cleaning of streets and public places

Function Management – Cleansing

MDB Code	Municipality Name	Qualification	Years of local Government Experience	Current position Section 57/Acting/Other	Years in existing position	If acting – reason provided
DC17	Motheo District Municipality					
FS171	Naledi Local Municipality	Diploma HR	12	Acting	1	Post to be advertised
FS172	Mangaung Local Municipality	B Tech Env Health	4	Acting		Post to be advertised
FS173	Mantsopa Local Municipality	Masters Eductaion BSC Education	25	MSA Sec 57	3	

Authority - Cleansing

MDB Code	Municipality Name	Authority for the function	Municipality understood authority	
			Authorised as Answered	Understands
DC17	Motheo District Municipality	-		No
FS171	Naledi Local Municipality	Yes	Local	Yes
FS172	Mangaung Local Municipality	Yes	Local	Yes
FS173	Mantsopa Local Municipality	Yes	Local	Yes

Service Provision - Cleansing

MDB Code	Municipality Name	Indicated that the municipality performed the function					
		2002	2003	2004	2005	2006	2007
DC17	Motheo District Municipality	No	Yes	No	No	No	No
FS171	Naledi Local Municipality	Yes	Yes	Yes	Yes	Yes	Yes
FS172	Mangaung Local Municipality	Yes	Yes	Yes	Yes	Yes	Yes
FS173	Mantsopa Local Municipality	Yes	Yes	No	Yes	Yes	Yes

MDB Code	Municipality Name	Municipality makes use of external service provider	Section 78 complete	Service level agreement in place	Municipality makes use of external service provider	Section 78 complete	Service level agreement in place
		2006	2006	2006	2007	2007	2007
DC17	Motheo District Municipality						
FS171	Naledi Local Municipality		No	No		No	No
FS172	Mangaung Local Municipality		No	No		No	No
FS173	Mantsopa Local Municipality		No	No		No	No

Budget information – Cleansing

MDB Code	Municipality Name	Operating Budget for function						
		2002/2003	2003/2004	2004/2005	2005/2006	2006/2007	2007/2008	
DC17	Motheo District Municipality			0	3800000	0	0	
FS171	Naledi Local Municipality	Part of another budget	2982770	0	1002238	1102238	2344155	
FS172	Mangaung Local Municipality	Part of another budget	12000000	74026470	74026470	66820000	219320000	
FS173	Mantsopa Local Municipality		3081473	4035181	0	68487.91	95000	6578441

MDB Code	Municipality Name	Line item or part allocation				
		2003/2004	2004/2005	2005/2006	2006/2007	2007/2008
DC17	Motheo District Municipality			Line;		
FS171	Naledi Local Municipality	Part		Line;	Part;	Part
FS172	Mangaung Local Municipality	Part	Line;Part;	Line;Part;	Line;	Part
FS173	Mantsopa Local Municipality	Line		Line;	Line;	Part

MDB Code	Municipality Name	Per capita budget			
		2004/2005	2005/2006	2006/2007	2007/2008
DC17	Motheo District Municipality		5.22		
FS171	Naledi Local Municipality		36.47	40.11	85.32
FS172	Mangaung Local Municipality	114.69	114.69	103.53	339.80
FS173	Mantsopa Local Municipality		1.24	1.72	118.87

Staffing – Cleansing

MDB Code	Municipality Name	Staff Available for the function					
		2002	2003	2004	2005	2006	2007
DC17	Motheo District Municipality			0	0	0	0
FS171	Naledi Local Municipality		32	0	13	13	15
FS172	Mangaung Local Municipality	558	291	722	722	722	235
FS173	Mantsopa Local Municipality	31	29	0	29	29	35

MDB Code	Municipality Name	Staff per capita ratio				Staff Vacancies		
		2004	2005	2006	2007	2005	2006	2007
DC17	Motheo District Municipality							
FS171	Naledi Local Municipality		2114	2114	1832			
FS172	Mangaung Local Municipality	894	894	894	2747			
FS173	Mantsopa Local Municipality		1908	1908	1581			

Equipment – Cleansing

MDB Code	Municipality Name	Equipment available for the function					
		2002	2003	2004	2005	2006	2007
DC17	Motheo District Municipality	No	No	No	No	No	No
FS171	Naledi Local Municipality	Yes	Yes	Yes	Yes	Yes	Yes
FS172	Mangaung Local Municipality	Yes	Yes	Yes	Yes	Yes	Yes
FS173	Mantsopa Local Municipality	Yes	Yes	No	Yes	Yes	Yes

Comments and Recommendations – Cleansing

Comments:

All three local municipalities perform the cleansing function and all do so from a single department. The municipalities have all indicated cleaning of streets and public places as one of the main aspects of the function.

All three managers have tertiary qualifications. The managers for FS171 and FS172 are in acting positions. The manager for FS173 has 25 years of local government experience and has been in the position for 3 years.

The municipalities have all had an increase in budget available since the previous financial year. Per capita budgets range from R85.32 in FS171 to R339.80 in FS172.

There are no staff vacancies for this function. Each municipality has staff available and FS172 is the only municipality to have less staff available now than they did in the previous financial year.

All three local municipalities have equipment available for the function.

In summary:

The local municipalities have capacity to perform this function.

Recommendation for the adjustment of the function:

No adjustments are recommended by the MDB for the 2007/08 assessment period.

3.20 Control of public nuisance

Department rendering the service – Control of public nuisance

MDB Code	Municipality Name	Name of Department Performing function	Only department performing function	Name of other department/s performing the function	Description of function performed by municipality
DC17	Motheo District Municipality				
FS171	Naledi Local Municipality				
FS172	Mangaung Local Municipality	Traffic and Security	Yes		Rendering of parking service
FS173	Mantsopa Local Municipality	Corporate Services	Yes		Control and monitoring of activities constituting public nuisances

Function Management – Control of public nuisance

MDB Code	Municipality Name	Qualification	Years of local Government Experience	Current position Section 57/Acting/Other	Years in existing position	If acting – reason provided
DC17	Motheo District Municipality					
FS171	Naledi Local Municipality					
FS172	Mangaung Local Municipality	Primary Teachers	0.5	Permanent		

		Diploma (Primary Grade A Teacher)				
FS173	Mantsopa Local Municipality	IAC Diploma	30	MSA Sec 57	19	

Authority - Control of public nuisance

MDB Code	Municipality Name	Authority for the function	Municipality understood authority	
			Authorised as Answered	Understands
DC17	Motheo District Municipality	-		No
FS171	Naledi Local Municipality	Yes		No
FS172	Mangaung Local Municipality	Yes	Local	Yes
FS173	Mantsopa Local Municipality	Yes	Local	Yes

Service Provision - Control of public nuisance

MDB Code	Municipality Name	Indicated that the municipality performed the function					
		2002	2003	2004	2005	2006	2007
DC17	Motheo District Municipality	No	Yes	No	No	No	No
FS171	Naledi Local Municipality	No	Yes	No	No	No	No
FS172	Mangaung Local Municipality	Yes	Yes	Yes	No	Yes	Yes
FS173	Mantsopa Local Municipality	Yes	Yes	Yes	Yes	Yes	Yes

MDB Code	Municipality Name	Municipality makes use of external service provider	Section 78 complete	Service level agreement in place	Municipality makes use of external service provider	Section 78 complete	Service level agreement in place
		2006	2006	2006	2007	2007	2007
DC17	Motheo District Municipality						
FS171	Naledi Local Municipality						
FS172	Mangaung Local Municipality		No	No		No	No
FS173	Mantsopa Local Municipality		No	No		No	No

Budget information – Control of public nuisance

MDB Code	Municipality Name	Operating Budget for function					
		2002/2003	2003/2004	2004/2005	2005/2006	2006/2007	2007/2008
DC17	Motheo District Municipality			0	0	0	0
FS171	Naledi Local Municipality		5000	0	479999.99	0	0
FS172	Mangaung Local Municipality	Part of another budget	1200000	18016480	0	300000	12425820
FS173	Mantsopa Local Municipality	14969		635293	636293	30000	939621

MDB Code	Municipality Name	Line item or part allocation				
		2003/2004	2004/2005	2005/2006	2006/2007	2007/2008
DC17	Motheo District Municipality					
FS171	Naledi Local Municipality	Part		Line;		
FS172	Mangaung Local Municipality	Part	Line;		Part;	Part
FS173	Mantsopa Local Municipality		Line;	Line;	Line;	Part

MDB Code	Municipality Name	Per capita budget			
		2004/2005	2005/2006	2006/2007	2007/2008
DC17	Motheo District Municipality				
FS171	Naledi Local Municipality		17.47		
FS172	Mangaung Local Municipality	27.91		0.46	19.25
FS173	Mantsopa Local Municipality	11.48	11.50	0.54	16.98

Staffing – Control of public nuisance

MDB Code	Municipality Name	Staff Available for the function					
		2002	2003	2004	2005	2006	2007
DC17	Motheo District Municipality			0	0	0	0
FS171	Naledi Local Municipality		1	0	1	0	0
FS172	Mangaung Local Municipality	27	22	40	0	20	247
FS173	Mantsopa Local Municipality	2	3	1	1	1	2

MDB Code	Municipality Name	Staff per capita ratio				Staff Vacancies		
		2004	2005	2006	2007	2005	2006	2007
DC17	Motheo District Municipality							
FS171	Naledi Local Municipality		27480			1		
FS172	Mangaung Local Municipality	16136		32272	2613		2	45
FS173	Mantsopa Local Municipality	55342	55342	55342	27671	1		2

Equipment – Control of public nuisance

MDB Code	Municipality Name	Equipment available for the function					
		2002	2003	2004	2005	2006	2007
DC17	Motheo District Municipality	No	No	No	No	No	No
FS171	Naledi Local Municipality	No	No	No	No	No	No
FS172	Mangaung Local Municipality	Yes	Yes	Yes	No	Yes	Yes
FS173	Mantsopa Local Municipality	No	No	Yes	No	Yes	Yes

Comments and Recommendations – Control of public nuisance

Comments:

FS172 and FS173 perform the control of public nuisance function and both do so from a single department. FS172 indicates that it renders a parking service while FS173 controls and monitors activities constituting public nuisances.

Both managers have tertiary qualifications. The manager for FS173 has 30 years of local government experience and has been in the position for 19 years while the manager for FS172 has only 6 months of local government experience.

FS172 and FS173 received increases in budget available since the previous financial year. Per capita budgets range from R16.98 in FS173 to R19.25 in FS172.

FS172 has 247 staff members available for the function and 45 vacancies while FS173 has 2 staff members available and 2 vacancies.

Both municipalities have equipment available to render the function.

In summary:

FS172 and FS173 have capacity to perform the function.

Recommendation for the adjustment of the function:

No adjustments are recommended by the MDB for the 2007/08 assessment period.

3.21 Control of undertakings that sell liquor to the public

Department rendering the service – Control of undertakings that sell liquor to the public

MDB Code	Municipality Name	Name of Department Performing function	Only department performing function	Name of other department/s performing the function	Description of function performed by municipality
DC17	Motheo District Municipality				
FS171	Naledi Local Municipality				
FS172	Mangaung Local Municipality	Community and Social Development: Environmental Health Div	No	LED Building Management	Inspections and investigations Certification of premises Licencing as food premises
FS173	Mantsopa Local Municipality	Corporate Services	Yes		Inspection Licencing

Function Management – Control of undertakings that sell liquor to the public

MDB Code	Municipality Name	Qualification	Years of local Government Experience	Current position Section 57/Acting/Other	Years in existing position	If acting – reason provided
DC17	Motheo District Municipality					
FS171	Naledi Local Municipality					
FS172	Mangaung Local Municipality	Nat Dipl Public Health	22	Permanent	2	
FS173	Mantsopa Local Municipality	IAC Diploma	30	MSA Sec 57	19	

Authority - Control of undertakings that sell liquor to the public

MDB Code	Municipality Name	Authority for the function	Authorised as Answered	Understands
DC17	Motheo District Municipality	-		No

FS171	Naledi Local Municipality	Yes		No
FS172	Mangaung Local Municipality	Yes	Local	Yes
FS173	Mantsopa Local Municipality	Yes	Local	Yes

Service Provision - Control of undertakings that sell liquor to the public

MDB Code	Municipality Name	Indicated that the municipality performed the function					
		2002	2003	2004	2005	2006	2007
DC17	Motheo District Municipality	Yes	Yes	No	No	No	No
FS171	Naledi Local Municipality	No	No	No	Yes	No	No
FS172	Mangaung Local Municipality	No	No	No	No	No	Yes
FS173	Mantsopa Local Municipality	No	No	No	No	No	Yes

MDB Code	Municipality Name	Municipality makes use of external service provider	Section 78 complete	Service level agreement in place	Municipality makes use of external service provider	Section 78 complete	Service level agreement in place
		2006	2006	2006	2007	2007	2007
DC17	Motheo District Municipality						
FS171	Naledi Local Municipality						
FS172	Mangaung Local Municipality					No	No
FS173	Mantsopa Local Municipality					No	No

Budget information – Control of undertakings that sell liquor to the public

MDB Code	Municipality Name	Operating Budget for function					
		2002/2003	2003/2004	2004/2005	2005/2006	2006/2007	2007/2008
DC17	Motheo District Municipality	50000		0	0	0	0
FS171	Naledi Local Municipality			0	60000	0	0
FS172	Mangaung Local Municipality			0	0	0	10000
FS173	Mantsopa Local Municipality			0	0	0	939621

MDB Code	Municipality Name	Line item or part allocation				
		2003/2004	2004/2005	2005/2006	2006/2007	2007/2008
DC17	Motheo District Municipality					
FS171	Naledi Local Municipality			Line;		
FS172	Mangaung Local Municipality					Part
FS173	Mantsopa Local Municipality					Part

MDB Code	Municipality Name	Per capita budget

		2004/2005	2005/2006	2006/2007	2007/2008
DC17	Motheo District Municipality				
FS171	Naledi Local Municipality		2.18		
FS172	Mangaung Local Municipality				0.02
FS173	Mantsopa Local Municipality				16.98

Staffing – Control of undertakings that sell liquor to the public

MDB Code	Municipality Name	Staff Available for the function					
		2002	2003	2004	2005	2006	2007
DC17	Motheo District Municipality			0	0	0	0
FS171	Naledi Local Municipality			0	1	0	0
FS172	Mangaung Local Municipality			0	0	0	23
FS173	Mantsopa Local Municipality			0	0	0	2

MDB Code	Municipality Name	Staff per capita ratio				Staff Vacancies		
		2004	2005	2006	2007	2005	2006	2007
DC17	Motheo District Municipality							
FS171	Naledi Local Municipality		27480			1		
FS172	Mangaung Local Municipality				28063			2
FS173	Mantsopa Local Municipality				27671			2

Equipment – Control of undertakings that sell liquor to the public

MDB Code	Municipality Name	Equipment available for the function					
		2002	2003	2004	2005	2006	2007
DC17	Motheo District Municipality	No	No	No	No	No	No
FS171	Naledi Local Municipality	No	No	No	No	No	No
FS172	Mangaung Local Municipality	No	Yes	Yes	No	No	Yes
FS173	Mantsopa Local Municipality	No	No	No	No	No	Yes

Comments and Recommendations – Control of undertakings that sell liquor to the public

Comments:

FS172 and FS173 perform this function and both have indicated inspections and licensing as one of the main aspects of the function.

Both managers have tertiary qualifications. The manager for FS173 has 30 years of local government experience and has been in the position for 19 years while the manager for FS172 has 22 years of local government experience and has been in the position for 2 years.

FS172 and FS173 received increases in budget available since the previous financial year. Per capita budgets range from R16.98 in FS173 to R0.02 in FS172.

FS172 has 23 staff members available for the function and 2 vacancies while FS173 has 2 staff members available and 2 vacancies.

Both municipalities have equipment available to render the function.

In summary:

FS172 and FS173 have capacity to perform the function.

Recommendation for the adjustment of the function:

No adjustments are recommended by the MDB for the 2007/08 assessment period.

3.22 Facilities for the accommodation, care and burial of animals

Department rendering the service – Facilities for the accommodation, care and burial of animals

MDB Code	Municipality Name	Name of Department Performing function	Only department performing function	Name of other department/s performing the function	Description of function performed by municipality
DC17	Motheo District Municipality				
FS171	Naledi Local Municipality				
FS172	Mangaung Local Municipality				
FS173	Mantsopa Local Municipality				

Function Management – Facilities for the accommodation, care and burial of animals

MDB Code	Municipality Name	Qualification	Years of local Government Experience	Current position Section 57/Acting/Other	Years in existing position	If acting – reason provided
DC17	Motheo District Municipality					
FS171	Naledi Local Municipality					
FS172	Mangaung Local Municipality					
FS173	Mantsopa Local Municipality					

Authority - Facilities for the accommodation, care and burial of animals

MDB Code	Municipality Name	Authority for the function	Municipality understood authority	
			Authorised as Answered	Understands
DC17	Motheo District Municipality	-		No
FS171	Naledi Local Municipality	Yes		No
FS172	Mangaung Local Municipality	Yes		No
FS173	Mantsopa Local Municipality	Yes		No

Service Provision - Facilities for the accommodation, care and burial of animals

MDB Code	Municipality Name	Indicated that the municipality performed the function					
		2002	2003	2004	2005	2006	2007
DC17	Motheo District Municipality	No	Yes	No	No	No	No
FS171	Naledi Local Municipality	No	No	No	No	No	No
FS172	Mangaung Local Municipality	No	No	Yes	Yes	Yes	No

FS173	Mantsopa Local Municipality	No	No	No	No	No	No
-------	-----------------------------	----	----	----	----	----	----

MDB Code	Municipality Name	Municipality makes use of external service provider	Section 78 complete	Service level agreement in place	Municipality makes use of external service provider	Section 78 complete	Service level agreement in place
		2006	2006	2006	2007	2007	2007
DC17	Motheo District Municipality						
FS171	Naledi Local Municipality						
FS172	Mangaung Local Municipality		No	No			
FS173	Mantsopa Local Municipality						

Budget information – Facilities for the accommodation, care and burial of animals

MDB Code	Municipality Name	Operating Budget for function					
		2002/2003	2003/2004	2004/2005	2005/2006	2006/2007	2007/2008
DC17	Motheo District Municipality			0	0	0	0
FS171	Naledi Local Municipality			0	0	0	0
FS172	Mangaung Local Municipality			0	3591990	50000	0
FS173	Mantsopa Local Municipality			0	0	0	0

MDB Code	Municipality Name	Line item or part allocation				
		2003/2004	2004/2005	2005/2006	2006/2007	2007/2008
DC17	Motheo District Municipality					
FS171	Naledi Local Municipality					
FS172	Mangaung Local Municipality			Line;	Part;	
FS173	Mantsopa Local Municipality					

MDB Code	Municipality Name	Per capita budget			
		2004/2005	2005/2006	2006/2007	2007/2008
DC17	Motheo District Municipality				
FS171	Naledi Local Municipality				
FS172	Mangaung Local Municipality		5.57	0.08	
FS173	Mantsopa Local Municipality				

Staffing – Facilities for the accommodation, care and burial of animals

MDB Code	Municipality Name	Staff Available for the function					
		2002	2003	2004	2005	2006	2007
DC17	Motheo District Municipality			0	0	0	0
FS171	Naledi Local Municipality			0	0	0	0

FS172	Mangaung Local Municipality	0		1	21	20	0
FS173	Mantsopa Local Municipality			0	0	0	0

MDB Code	Municipality Name	Staff per capita ratio				Staff Vacancies		
		2004	2005	2006	2007	2005	2006	2007
DC17	Motheo District Municipality							
FS171	Naledi Local Municipality							
FS172	Mangaung Local Municipality	645441	30735	32272			2	
FS173	Mantsopa Local Municipality							

Equipment – Facilities for the accommodation, care and burial of animals

MDB Code	Municipality Name	Equipment available for the function					
		2002	2003	2004	2005	2006	2007
DC17	Motheo District Municipality	No	No	No	No	No	No
FS171	Naledi Local Municipality	No	No	No	No	No	No
FS172	Mangaung Local Municipality	No	No	Yes	Yes	Yes	No
FS173	Mantsopa Local Municipality	No	No	No	No	No	No

Comments and Recommendations – Facilities for the accommodation, care and burial of animals

Comments:

This function is not performed by any of the municipalities.

Recommendation for the adjustment of the function:

No adjustments are recommended by the MDB for the 2007/08 assessment period.

3.23 Fencing and fences

Department rendering the service – Fencing and fences

MDB Code	Municipality Name	Name of Department Performing function	Only department performing function	Name of other department/s performing the function	Description of function performed by municipality
DC17	Motheo District Municipality				
FS171	Naledi Local Municipality				
FS172	Mangaung Local Municipality				
FS173	Mantsopa Local Municipality				

Function Management – Fencing and fences

MDB Code	Municipality Name	Qualification	Years of local Government Experience	Current position Section 57/Acting/Other	Years in existing position	If acting – reason provided
DC17	Motheo District Municipality					
FS171	Naledi Local Municipality					

FS172	Mangaung Local Municipality					
FS173	Mantsopa Local Municipality					

Authority - Fencing and fences

MDB Code	Municipality Name	Authority for the function	Municipality understood authority	
			Authorised as Answered	Understands
DC17	Motheo District Municipality	-		No
FS171	Naledi Local Municipality	Yes		No
FS172	Mangaung Local Municipality	Yes		No
FS173	Mantsopa Local Municipality	Yes		No

Service Provision - Fencing and fences

MDB Code	Municipality Name	Indicated that the municipality performed the function					
		2002	2003	2004	2005	2006	2007
DC17	Motheo District Municipality	No	Yes	No	No	No	No
FS171	Naledi Local Municipality	No	Yes	Yes	Yes	Yes	No
FS172	Mangaung Local Municipality	Yes	No	No	No	No	No
FS173	Mantsopa Local Municipality	No	Yes	No	Yes	Yes	No

MDB Code	Municipality Name	Municipality makes use of external service provider	Section 78 complete	Service level agreement in place	Municipality makes use of external service provider	Section 78 complete	Service level agreement in place
		2006	2006	2006	2007	2007	2007
DC17	Motheo District Municipality						
FS171	Naledi Local Municipality		No	No			
FS172	Mangaung Local Municipality						
FS173	Mantsopa Local Municipality		No	No			

Budget information – Fencing and fences

MDB Code	Municipality Name	Operating Budget for function					
		2002/2003	2003/2004	2004/2005	2005/2006	2006/2007	2007/2008
DC17	Motheo District Municipality			0	0	0	0
FS171	Naledi Local Municipality		5000	60000	30000	40000	0
FS172	Mangaung Local Municipality	2500		0	0	0	0
FS173	Mantsopa Local Municipality		40000	0	0	0	0

MDB Code	Municipality Name	Line item or part allocation				
		2003/2004	2004/2005	2005/2006	2006/2007	2007/2008
DC17	Motheo District Municipality					
FS171	Naledi Local Municipality	Part	Part;	Line;	Part;	
FS172	Mangaung Local Municipality					
FS173	Mantsopa Local Municipality	Part				

MDB Code	Municipality Name	Per capita budget			
		2004/2005	2005/2006	2006/2007	2007/2008
DC17	Motheo District Municipality				
FS171	Naledi Local Municipality	2.18	1.09	1.46	
FS172	Mangaung Local Municipality				
FS173	Mantsopa Local Municipality				

Staffing – Fencing and fences

MDB Code	Municipality Name	Staff Available for the function					
		2002	2003	2004	2005	2006	2007
DC17	Motheo District Municipality			0	0	0	0
FS171	Naledi Local Municipality		4	5	5	5	0
FS172	Mangaung Local Municipality	3		0	0	0	0
FS173	Mantsopa Local Municipality		5	0	5	4	0

MDB Code	Municipality Name	Staff per capita ratio				Staff Vacancies		
		2004	2005	2006	2007	2005	2006	2007
DC17	Motheo District Municipality							
FS171	Naledi Local Municipality	5496	5496	5496		3		
FS172	Mangaung Local Municipality							
FS173	Mantsopa Local Municipality		11068	13836				

Equipment – Fencing and fences

MDB Code	Municipality Name	Equipment available for the function					
		2002	2003	2004	2005	2006	2007
DC17	Motheo District Municipality	No	No	No	No	No	No
FS171	Naledi Local Municipality	No	Yes	Yes	Yes	Yes	No
FS172	Mangaung Local Municipality	Yes	No	No	No	No	No
FS173	Mantsopa Local Municipality	No	Yes	No	Yes	Yes	No

Comments and Recommendations – Fencing and fences

Comments:

This function is not performed by any of the municipalities.

Recommendation for the adjustment of the function:

No adjustments are recommended by the MDB for the 2007/08 assessment period.

3.24 Licensing of dogs

Department rendering the service – Licensing of dogs

MDB Code	Municipality Name	Name of Department Performing function	Only department performing function	Name of other department/s performing the function	Description of function performed by municipality
DC17	Motheo District Municipality				
FS171	Naledi Local Municipality				
FS172	Mangaung Local Municipality				
FS173	Mantsopa Local Municipality				

Function Management – Licensing of dogs

MDB Code	Municipality Name	Qualification	Years of local Government Experience	Current position Section 57/Acting/Other	Years in existing position	If acting – reason provided
DC17	Motheo District Municipality					
FS171	Naledi Local Municipality					
FS172	Mangaung Local Municipality					
FS173	Mantsopa Local Municipality					

Authority - Licensing of dogs

MDB Code	Municipality Name	Authority for the function	Municipality understood authority	
			Authorised as Answered	Understands
DC17	Motheo District Municipality	-		No
FS171	Naledi Local Municipality	Yes		No
FS172	Mangaung Local Municipality	Yes		No
FS173	Mantsopa Local Municipality	Yes		No

Service Provision - Licensing of dogs

MDB Code	Municipality Name	Indicated that the municipality performed the function					
		2002	2003	2004	2005	2006	2007
DC17	Motheo District Municipality	No	Yes	No	No	No	No
FS171	Naledi Local Municipality	No	No	No	Yes	No	No
FS172	Mangaung Local Municipality	Yes	Yes	Yes	Yes	Yes	No
FS173	Mantsopa Local Municipality	Yes	Yes	Yes	Yes	Yes	No

MDB Code	Municipality Name	Municipality makes use of external service provider	Section 78 complete	Service level agreement in place	Municipality makes use of external service provider	Section 78 complete	Service level agreement in place
		2006	2006	2006	2007	2007	2007
DC17	Motheo District Municipality						
FS171	Naledi Local Municipality						
FS172	Mangaung Local Municipality		No	No			
FS173	Mantsopa Local Municipality		No	No			

Budget information – Licensing of dogs

MDB Code	Municipality Name	Operating Budget for function					
		2002/2003	2003/2004	2004/2005	2005/2006	2006/2007	2007/2008
DC17	Motheo District Municipality			0	0	0	0
FS171	Naledi Local Municipality			0	0	0	0
FS172	Mangaung Local Municipality	Part of another budget		0	1	0	0
FS173	Mantsopa Local Municipality			6000	9108	10000	0

MDB Code	Municipality Name	Line item or part allocation				
		2003/2004	2004/2005	2005/2006	2006/2007	2007/2008
DC17	Motheo District Municipality					
FS171	Naledi Local Municipality					
FS172	Mangaung Local Municipality			Line;		
FS173	Mantsopa Local Municipality		Part;	Part;	Line;	

MDB Code	Municipality Name	Per capita budget			
		2004/2005	2005/2006	2006/2007	2007/2008
DC17	Motheo District Municipality				
FS171	Naledi Local Municipality				
FS172	Mangaung Local Municipality		0.00		
FS173	Mantsopa Local Municipality	0.11	0.16	0.18	

Staffing – Licensing of dogs

MDB Code	Municipality Name	Staff Available for the function					
		2002	2003	2004	2005	2006	2007
DC17	Motheo District Municipality			0	0	0	0
FS171	Naledi Local Municipality			0	0	0	0
FS172	Mangaung Local Municipality	80		0	0	0	0
FS173	Mantsopa Local Municipality	4	4	3	1	1	0

MDB Code	Municipality Name	Staff per capita ratio				Staff Vacancies		
		2004	2005	2006	2007	2005	2006	2007
DC17	Motheo District Municipality							
FS171	Naledi Local Municipality					8		
FS172	Mangaung Local Municipality							
FS173	Mantsopa Local Municipality	18447	55342	55342		1		

Equipment – Licensing of dogs

MDB Code	Municipality Name	Equipment available for the function					
		2002	2003	2004	2005	2006	2007
DC17	Motheo District Municipality	No	No	No	No	No	No
FS171	Naledi Local Municipality	No	No	No	Yes	No	No
FS172	Mangaung Local Municipality	Yes	No	No	No	Yes	No
FS173	Mantsopa Local Municipality	No	No	No	No	Yes	No

Comments and Recommendations – Licensing of dogs

Comments:

This function is not performed by any of the municipalities.

Recommendation for the adjustment of the function:

No adjustments are recommended by the MDB for the 2007/08 assessment period.

3.25 Licensing and control of undertakings that sell food to the public

Department rendering the service – Licensing and control of undertakings that sell food to the public

MDB Code	Municipality Name	Name of Department Performing function	Only department performing function	Name of other department/s performing the function	Description of function performed by municipality
DC17	Motheo District Municipality				
FS171	Naledi Local Municipality				
FS172	Mangaung Local Municipality	Community and Social Development: Environmental Health Div	Yes		Licensing and certification of premises Food safety Hygiene and transportation of foodstuff Education and awareness
FS173	Mantsopa Local Municipality				

Function Management – Licensing and control of undertakings that sell food to the public

MDB Code	Municipality Name	Qualification	Years of local Government Experience	Current position Section 57/Acting/Other	Years in existing position	If acting – reason provided
DC17	Motheo District Municipality					
FS171	Naledi Local Municipality					
FS172	Mangaung Local	Nat Dipl Public	22	Permanent	2	

	Municipality	Health				
FS173	Mantsopa Local Municipality					

Authority - Licensing and control of undertakings that sell food to the public

MDB Code	Municipality Name	Authority for the function	Municipality understood authority	
			Authorised as Answered	Understands
DC17	Motheo District Municipality	-		No
FS171	Naledi Local Municipality	Yes		No
FS172	Mangaung Local Municipality	Yes	Local	Yes
FS173	Mantsopa Local Municipality	Yes		No

Service Provision - Licensing and control of undertakings that sell food to the public

MDB Code	Municipality Name	Indicated that the municipality performed the function					
		2002	2003	2004	2005	2006	2007
DC17	Motheo District Municipality	Yes	Yes	No	No	No	No
FS171	Naledi Local Municipality	Yes	Yes	No	Yes	Yes	No
FS172	Mangaung Local Municipality	Yes	Yes	Yes	Yes	Yes	Yes
FS173	Mantsopa Local Municipality	Yes	Yes	Yes	Yes	Yes	No

MDB Code	Municipality Name	Municipality makes use of external service provider	Section 78 complete	Service level agreement in place	Municipality makes use of external service provider	Section 78 complete	Service level agreement in place
		2006	2006	2006	2007	2007	2007
DC17	Motheo District Municipality						
FS171	Naledi Local Municipality		No	No			
FS172	Mangaung Local Municipality		No	No		No	No
FS173	Mantsopa Local Municipality		No	No			

Budget information – Licensing and control of undertakings that sell food to the public

MDB Code	Municipality Name	Operating Budget for function					
		2002/2003	2003/2004	2004/2005	2005/2006	2006/2007	2007/2008
DC17	Motheo District Municipality	50000	100000	0	0	0	0
FS171	Naledi Local Municipality		2500	0	479999	66000	0
FS172	Mangaung Local Municipality	Part of another budget	3900000	3675000	370000	400000	430000
FS173	Mantsopa Local	23951	49487	0	0	7000	0

	Municipality						
--	--------------	--	--	--	--	--	--

MDB Code	Municipality Name	Line item or part allocation				
		2003/2004	2004/2005	2005/2006	2006/2007	2007/2008
DC17	Motheo District Municipality	Line				
FS171	Naledi Local Municipality	Part		Line;	Part;	
FS172	Mangaung Local Municipality	Part	Part;	Part;	Part;	Part
FS173	Mantsopa Local Municipality	Line			Line;	

MDB Code	Municipality Name	Per capita budget			
		2004/2005	2005/2006	2006/2007	2007/2008
DC17	Motheo District Municipality				
FS171	Naledi Local Municipality		17.47	2.40	
FS172	Mangaung Local Municipality	5.69	0.57	0.62	0.67
FS173	Mantsopa Local Municipality			0.13	

Staffing – Licensing and control of undertakings that sell food to the public

MDB Code	Municipality Name	Staff Available for the function					
		2002	2003	2004	2005	2006	2007
DC17	Motheo District Municipality			0	0	0	0
FS171	Naledi Local Municipality	1	1	0	1	1	0
FS172	Mangaung Local Municipality	27	22	19	20	20	24
FS173	Mantsopa Local Municipality	2	1	1	1	1	0

MDB Code	Municipality Name	Staff per capita ratio				Staff Vacancies		
		2004	2005	2006	2007	2005	2006	2007
DC17	Motheo District Municipality							
FS171	Naledi Local Municipality		27480	27480				
FS172	Mangaung Local Municipality	33971	32272	32272	26893		2	4
FS173	Mantsopa Local Municipality	55342	55342	55342		1		

Equipment – Licensing and control of undertakings that sell food to the public

MDB Code	Municipality Name	Equipment available for the function					
		2002	2003	2004	2005	2006	2007
DC17	Motheo District Municipality	No	No	No	No	No	No
FS171	Naledi Local Municipality	No	No	No	Yes	Yes	No
FS172	Mangaung Local Municipality	Yes	Yes	Yes	Yes	Yes	Yes
FS173	Mantsopa Local Municipality	No	Yes	Yes	Yes	Yes	No

Comments and Recommendations – Licensing and control of undertakings that sell food to the public

Comments:

FS172 performs this function and does so from a single department.

The manager has a tertiary qualification, 22 years of local government experience and has been in the position for 2 years.

FS172 has had an increase in budget available since the previous financial year.

It has 24 staff members available for the function and 4 vacancies.

FS172 has equipment for this function.

In summary:

FS172 has capacity to perform the function.

Recommendation for the adjustment of the function:

No adjustments are recommended by the MDB for the 2007/08 assessment period.

3.26 Local amenities

Department rendering the service – Local amenities

MDB Code	Municipality Name	Name of Department Performing function	Only department performing function	Name of other department/s performing the function	Description of function performed by municipality
DC17	Motheo District Municipality				
FS171	Naledi Local Municipality	Community Services	Yes		Manage and maintain municipal land and buildings
FS172	Mangaung Local Municipality				
FS173	Mantsopa Local Municipality	Corporate Services	Yes		Manage and maintain municipal land and buildings

Function Management – Local amenities

MDB Code	Municipality Name	Qualification	Years of local Government Experience	Current position Section 57/Acting/Other	Years in existing position	If acting – reason provided
DC17	Motheo District Municipality					
FS171	Naledi Local Municipality	Diploma HR	12	Acting	1	Post to be advertised
FS172	Mangaung Local Municipality					
FS173	Mantsopa Local Municipality	IAC Diploma	30	Permanent	19	

Authority - Local amenities

MDB Code	Municipality Name	Authority for the function	Municipality understood authority	
			Authorised as Answered	Understands
DC17	Motheo District Municipality	-		No
FS171	Naledi Local Municipality	Yes	Local	Yes
FS172	Mangaung Local Municipality	Yes		No
FS173	Mantsopa Local Municipality	Yes	Local	Yes

Service Provision - Local amenities

MDB Code	Municipality Name	Indicated that the municipality performed the function					
		2002	2003	2004	2005	2006	2007
DC17	Motheo District Municipality	No	Yes	No	No	No	No
FS171	Naledi Local Municipality	No	No	No	No	No	Yes
FS172	Mangaung Local Municipality	Yes	Yes	No	No	Yes	No
FS173	Mantsopa Local Municipality	Yes	No	No	Yes	Yes	Yes

MDB Code	Municipality Name	Municipality makes use of external service provider	Section 78 complete	Service level agreement in place	Municipality makes use of external service provider	Section 78 complete	Service level agreement in place
		2006	2006	2006	2007	2007	2007
DC17	Motheo District Municipality						
FS171	Naledi Local Municipality					No	No
FS172	Mangaung Local Municipality		No	No			
FS173	Mantsopa Local Municipality		No	No		No	No

Budget information – Local amenities

MDB Code	Municipality Name	Operating Budget for function					
		2002/2003	2003/2004	2004/2005	2005/2006	2006/2007	2007/2008
DC17	Motheo District Municipality			0	0	0	0
FS171	Naledi Local Municipality			0	0	0	175946
FS172	Mangaung Local Municipality	1997350	3710350	0	0	621430	0
FS173	Mantsopa Local Municipality			0	0	0	1568263

MDB Code	Municipality Name	Line item or part allocation				
		2003/2004	2004/2005	2005/2006	2006/2007	2007/2008
DC17	Motheo District Municipality					
FS171	Naledi Local Municipality					Part
FS172	Mangaung Local Municipality	Line			Line;	
FS173	Mantsopa Local Municipality					Part

MDB Code	Municipality Name	Per capita budget			
		2004/2005	2005/2006	2006/2007	2007/2008
DC17	Motheo District Municipality				
FS171	Naledi Local Municipality				6.40
FS172	Mangaung Local Municipality			0.96	
FS173	Mantsopa Local Municipality				28.34

Staffing – Local amenities

MDB Code	Municipality Name	Staff Available for the function					
		2002	2003	2004	2005	2006	2007
DC17	Motheo District Municipality			0	0	0	0
FS171	Naledi Local Municipality			0	0	0	12
FS172	Mangaung Local Municipality	27	26	0	0	7	0
FS173	Mantsopa Local Municipality	1		0	1	1	20

MDB Code	Municipality Name	Staff per capita ratio				Staff Vacancies		
		2004	2005	2006	2007	2005	2006	2007
DC17	Motheo District Municipality							
FS171	Naledi Local Municipality				2290			
FS172	Mangaung Local Municipality			92206				
FS173	Mantsopa Local Municipality		55342	55342	2767			5

Equipment – Local amenities

MDB Code	Municipality Name	Equipment available for the function					
		2002	2003	2004	2005	2006	2007
DC17	Motheo District Municipality	No	No	No	Yes	No	No
FS171	Naledi Local Municipality	No	No	No	No	No	Yes
FS172	Mangaung Local Municipality	Yes	Yes	No	No	Yes	No
FS173	Mantsopa Local Municipality	Yes	No	No	Yes	Yes	Yes

Comments and Recommendations – Local amenities**Comments:**

FS171 and FS173 perform the local amenities function and both do so from a single department. Both indicate that they manage and maintain municipal land and buildings.

Both managers have tertiary qualifications. The manager for FS173 has 30 years of local government experience and has been in the position for 19 years while the manager for FS171 is in an acting position and has 12 years of local government experience.

FS172 and FS173 received increases in budget available since the previous financial year. Per capita budgets range from R28.34 in FS173 to R6.40 in FS171.

FS171 has 12 staff members available for the function and 45 vacancies while FS173 has 20 staff members available and 5 vacancies.

Both municipalities have equipment available to render the function.

In summary:

FS171 and FS173 have capacity to perform the function.

Recommendation for the adjustment of the function:

No adjustments are recommended by the MDB for the 2007/08 assessment period.

3.27 Local sport facilities

Department rendering the service – Local sport facilities

MDB Code	Municipality Name	Name of Department Performing function	Only department performing function	Name of other department/s performing the function	Description of function performed by municipality
DC17	Motheo District Municipality				
FS171	Naledi Local Municipality	Community Services	Yes		Management of local sport facilities
FS172	Mangaung Local Municipality	Technical Services	Yes		Manage and maintain all sport facilities
FS173	Mantsopa Local Municipality	Corporate Services	Yes		Manage and maintain sport grounds, tennis courts, pools

Function Management – Local sport facilities

MDB Code	Municipality Name	Qualification	Years of local Government Experience	Current position Section 57/Acting/Other	Years in existing position	If acting – reason provided
DC17	Motheo District Municipality					
FS171	Naledi Local Municipality	Diploma HR	12	Acting	1	Post to be advertised
FS172	Mangaung Local Municipality	B Tech Env Health	4	Acting		Post to be advertised
FS173	Mantsopa Local Municipality	IAC Diploma	30	Permanent	19	

Authority - Local sport facilities

MDB Code	Municipality Name	Authority for the function	Municipality understood authority	
			Authorised as Answered	Understands
DC17	Motheo District Municipality	-		No
FS171	Naledi Local Municipality	Yes	Local	Yes
FS172	Mangaung Local Municipality	Yes	Local	Yes
FS173	Mantsopa Local Municipality	Yes	Local	Yes

Service Provision - Local sport facilities

MDB Code	Municipality Name	Indicated that the municipality performed the function					
		2002	2003	2004	2005	2006	2007
DC17	Motheo District Municipality	No	Yes	No	No	Yes	No
FS171	Naledi Local Municipality	No	Yes	Yes	Yes	No	Yes
FS172	Mangaung Local Municipality	Yes	Yes	Yes	No	Yes	Yes
FS173	Mantsopa Local Municipality	Yes	Yes	Yes	Yes	Yes	Yes

MDB Code	Municipality Name	Municipality makes use of external service provider	Section 78 complete	Service level agreement in place	Municipality makes use of external service provider	Section 78 complete	Service level agreement in place
		2006	2006	2006	2007	2007	2007

DC17	Motheo District Municipality		No	No			
FS171	Naledi Local Municipality					No	No
FS172	Mangaung Local Municipality					No	No
FS173	Mantsopa Local Municipality		No	No		No	No

Budget information – Local sport facilities

MDB Code	Municipality Name	Operating Budget for function					
		2002/2003	2003/2004	2004/2005	2005/2006	2006/2007	2007/2008
DC17	Motheo District Municipality		3160000	0	3137440	2201610	0
FS171	Naledi Local Municipality		224220	30000	0	0	1777560
FS172	Mangaung Local Municipality	15930900	40366350	2172280	0	14627340	238389640
FS173	Mantsopa Local Municipality	811162	41000	350000	27683.68	77000	1568263

MDB Code	Municipality Name	Line item or part allocation				
		2003/2004	2004/2005	2005/2006	2006/2007	2007/2008
DC17	Motheo District Municipality	Line		Line;	Part;	
FS171	Naledi Local Municipality	Part	Part;			Part
FS172	Mangaung Local Municipality	Line	Line;		Part;	Part
FS173	Mantsopa Local Municipality	Part	Part;	Line;	Line;	Part

MDB Code	Municipality Name	Per capita budget			
		2004/2005	2005/2006	2006/2007	2007/2008
DC17	Motheo District Municipality		4.31	3.02	
FS171	Naledi Local Municipality	1.09			64.70
FS172	Mangaung Local Municipality	3.37		22.66	369.35
FS173	Mantsopa Local Municipality	6.32	0.50	1.39	28.34

Staffing – Local sport facilities

MDB Code	Municipality Name	Staff Available for the function					
		2002	2003	2004	2005	2006	2007
DC17	Motheo District Municipality			0	0	0	0
FS171	Naledi Local Municipality		2	3	3	0	4
FS172	Mangaung Local Municipality	111	110	0	0	70	160
FS173	Mantsopa Local Municipality	8	10	5	10	10	15

MDB Code	Municipality Name	Staff per capita ratio				Staff Vacancies		
		2004	2005	2006	2007	2005	2006	2007
DC17	Motheo District Municipality							
FS171	Naledi Local Municipality	9160	9160		6869			
FS172	Mangaung Local Municipality			9221	4034			

FS173	Mantsopa Local Municipality	11068	5534	5534	3689			
-------	-----------------------------	-------	------	------	------	--	--	--

Equipment – Local sport facilities

MDB Code	Municipality Name	Equipment available for the function					
		2002	2003	2004	2005	2006	2007
DC17	Motheo District Municipality	No	No	No	No	No	No
FS171	Naledi Local Municipality	No	No	Yes	No	No	Yes
FS172	Mangaung Local Municipality	Yes	Yes	Yes	No	Yes	Yes
FS173	Mantsopa Local Municipality	Yes	No	Yes	Yes	Yes	Yes

Comments and Recommendations – Local sport facilities

Comments:

All three local municipalities perform the local sports facilities function and all do so from a single department. Each municipality has indicated management and maintenance of sports facilities as one of the main aspects of the function.

All three managers have tertiary qualifications. The managers for FS171 and FS172 are in acting positions. The manager for FS173 has 30 years of local government experience and has been in the position for 19 years.

Each municipality has received an increase in budget available since the previous financial year. Per capita budgets range from R28.34 in FS173 to R369.35 in FS172.

The three municipalities have staff available for the function and all have more staff available than they did in 2006. There are no staff vacancies.

All three local municipalities have equipment available for the function.

In summary:

The local municipalities have capacity to perform this function.

Recommendation for the adjustment of the function:

No adjustments are recommended by the MDB for the 2007/08 assessment period.

3.28 Markets

Department rendering the service – Markets

MDB Code	Municipality Name	Name of Department Performing function	Only department performing function	Name of other department/s performing the function	Description of function performed by municipality
DC17	Motheo District Municipality				
FS171	Naledi Local Municipality				
FS172	Mangaung Local Municipality	Community and Social Development	Yes		Manage fresh produce markets
FS173	Mantsopa Local Municipality				

Function Management – Markets

MDB Code	Municipality Name	Qualification	Years of local Government Experience	Current position Section 57/Acting/Other	Years in existing position	If acting – reason provided
DC17	Motheo District Municipality					
FS171	Naledi Local Municipality					
FS172	Mangaung Local Municipality	Nat Dip Public Health	22	Permanent	2	
FS173	Mantsopa Local Municipality					

Authority - Markets

MDB Code	Municipality Name	Authority for the function	Municipality understood authority	
			Authorised as Answered	Understands
DC17	Motheo District Municipality	Yes, except for FS172		No
FS171	Naledi Local Municipality	Yes		No
FS172	Mangaung Local Municipality	Yes, including DM function	Local	Yes
FS173	Mantsopa Local Municipality	Yes		No

Service Provision - Markets

MDB Code	Municipality Name	Indicated that the municipality performed the function					
		2002	2003	2004	2005	2006	2007
DC17	Motheo District Municipality	No	No	No	No	No	No
FS171	Naledi Local Municipality	No	No	No	Yes	No	No
FS172	Mangaung Local Municipality	Yes	Yes	Yes	Yes	Yes	Yes
FS173	Mantsopa Local Municipality	No	No	No	No	No	No

MDB Code	Municipality Name	Municipality makes use of external service provider	Section 78 complete	Service level agreement in place	Municipality makes use of external service provider	Section 78 complete	Service level agreement in place
		2006	2006	2006	2007	2007	2007
DC17	Motheo District Municipality						
FS171	Naledi Local Municipality						
FS172	Mangaung Local Municipality		Yes	No		No	No
FS173	Mantsopa Local Municipality						

Budget information – Markets

MDB Code	Municipality Name	Operating Budget for function					
		2002/2003	2003/2004	2004/2005	2005/2006	2006/2007	2007/2008
DC17	Motheo District Municipality			0	0	0	0
FS171	Naledi Local			0	0	0	0

	Municipality						
FS172	Mangaung Local Municipality	6901910	8053400	10267320	10267320	1021744000	2750000
FS173	Mantsopa Local Municipality			0	0	0	0

MDB Code	Municipality Name	Line item or part allocation				
		2003/2004	2004/2005	2005/2006	2006/2007	2007/2008
DC17	Motheo District Municipality					
FS171	Naledi Local Municipality					
FS172	Mangaung Local Municipality	Line	Line;	Line;	Line;	Line
FS173	Mantsopa Local Municipality					

MDB Code	Municipality Name	Per capita budget			
		2004/2005	2005/2006	2006/2007	2007/2008
DC17	Motheo District Municipality				
FS171	Naledi Local Municipality				
FS172	Mangaung Local Municipality	15.91	15.91	1583.02	4.26
FS173	Mantsopa Local Municipality				

Staffing – Markets

MDB Code	Municipality Name	Staff Available for the function					
		2002	2003	2004	2005	2006	2007
DC17	Motheo District Municipality			0	0	0	0
FS171	Naledi Local Municipality			0	1	0	0
FS172	Mangaung Local Municipality	36	40	33	33	34	20
FS173	Mantsopa Local Municipality			0	0	0	0

MDB Code	Municipality Name	Staff per capita ratio				Staff Vacancies		
		2004	2005	2006	2007	2005	2006	2007
DC17	Motheo District Municipality							
FS171	Naledi Local Municipality		27480			1		
FS172	Mangaung Local Municipality	19559	19559	18984	32272		2	
FS173	Mantsopa Local Municipality							

Equipment – Markets

MDB Code	Municipality Name	Equipment available for the function					
		2002	2003	2004	2005	2006	2007
DC17	Motheo District Municipality	No	No	No	No	No	No
FS171	Naledi Local Municipality	No	No	No	No	No	No
FS172	Mangaung Local Municipality	Yes	Yes	Yes	Yes	Yes	Yes
FS173	Mantsopa Local Municipality	No	No	No	No	No	No

Comments and Recommendations – Markets

Comments:

FS172 performs the markets function and does so from a single department.

The manager has a tertiary qualification, 22 years of local government experience and has been in the position for 2 years.

FS172 received a decrease in budget available since the previous financial year. It has 20 staff members available for the function and no staff vacancies. There is equipment available for the function.

In summary:

FS172 has capacity to perform the function.

Recommendation for the adjustment of the function:

No adjustments are recommended by the MDB for the 2007/08 assessment period.

3.29 Municipal abattoirs

Department rendering the service – Municipal abattoirs

MDB Code	Municipality Name	Name of Department Performing function	Only department performing function	Name of other department/s performing the function	Description of function performed by municipality
DC17	Motheo District Municipality				
FS171	Naledi Local Municipality				
FS172	Mangaung Local Municipality	Community and Social Development: Environmental Health Div	Yes		Inspection and investigations Registering of premises Monitoring function
FS173	Mantsopa Local Municipality				

Function Management – Municipal abattoirs

MDB Code	Municipality Name	Qualification	Years of local Government Experience	Current position Section 57/Acting/Other	Years in existing position	If acting – reason provided
DC17	Motheo District Municipality					
FS171	Naledi Local Municipality					
FS172	Mangaung Local Municipality	Nat Dip Public Health	22	Permanent	2	
FS173	Mantsopa Local Municipality					

Authority - Municipal abattoirs

MDB Code	Municipality Name	Authority for the function	Municipality understood authority	
			Authorised as Answered	Understands
DC17	Motheo District Municipality	Yes		No
FS171	Naledi Local Municipality	Yes		No
FS172	Mangaung Local Municipality	Yes	Local	Yes
FS173	Mantsopa Local Municipality	Yes		No

Service Provision - Municipal abattoirs

MDB Code	Municipality Name	Indicated that the municipality performed the function					
		2002	2003	2004	2005	2006	2007
DC17	Motheo District Municipality	No	No	No	No	No	No
FS171	Naledi Local Municipality	No	No	No	Yes	No	No
FS172	Mangaung Local Municipality	No	No	No	No	No	Yes
FS173	Mantsopa Local Municipality	No	No	No	No	No	No

MDB Code	Municipality Name	Municipality makes use of external service provider	Section 78 complete	Service level agreement in place	Municipality makes use of external service provider	Section 78 complete	Service level agreement in place
		2006	2006	2006	2007	2007	2007
DC17	Motheo District Municipality						
FS171	Naledi Local Municipality	Dept of Agriculture	No	No			
FS172	Mangaung Local Municipality					No	No
FS173	Mantsopa Local Municipality						

Budget information – Municipal abattoirs

MDB Code	Municipality Name	Operating Budget for function					
		2002/2003	2003/2004	2004/2005	2005/2006	2006/2007	2007/2008
DC17	Motheo District Municipality			0	0	0	0
FS171	Naledi Local Municipality			0	479999	66000	0
FS172	Mangaung Local Municipality			0	0	0	20000
FS173	Mantsopa Local Municipality			0	0	0	0

MDB Code	Municipality Name	Line item or part allocation				
		2003/2004	2004/2005	2005/2006	2006/2007	2007/2008
DC17	Motheo District Municipality					
FS171	Naledi Local Municipality			Line;	Part;	
FS172	Mangaung Local Municipality					Part
FS173	Mantsopa Local Municipality					

MDB Code	Municipality Name	Per capita budget			
		2004/2005	2005/2006	2006/2007	2007/2008
DC17	Motheo District Municipality				
FS171	Naledi Local Municipality		17.47	2.40	
FS172	Mangaung Local Municipality				0.03

FS173	Mantsopa Local Municipality					
-------	-----------------------------	--	--	--	--	--

Staffing – Municipal abattoirs

MDB Code	Municipality Name	Staff Available for the function					
		2002	2003	2004	2005	2006	2007
DC17	Motheo District Municipality			0	0	0	0
FS171	Naledi Local Municipality			0	1	1	0
FS172	Mangaung Local Municipality			0	0	0	23
FS173	Mantsopa Local Municipality			0	0	0	0

MDB Code	Municipality Name	Staff per capita ratio				Staff Vacancies		
		2004	2005	2006	2007	2005	2006	2007
DC17	Motheo District Municipality							
FS171	Naledi Local Municipality		27480	27480		1		
FS172	Mangaung Local Municipality				28063			2
FS173	Mantsopa Local Municipality							

Equipment – Municipal abattoirs

MDB Code	Municipality Name	Equipment available for the function					
		2002	2003	2004	2005	2006	2007
DC17	Motheo District Municipality	No	No	No	No	No	No
FS171	Naledi Local Municipality	No	No	No	No	No	No
FS172	Mangaung Local Municipality	No	No	No	No	No	Yes
FS173	Mantsopa Local Municipality	No	No	No	No	No	No

Comments and Recommendations – Municipal abattoirs

Comments:

FS172 performs the municipal abattoirs function and does so from a single department.

The manager has a tertiary qualification, 22 years of local government experience and has been in the position for 2 years.

FS172 received an increase in budget available since the previous financial year. It has 23 staff members available for the function and 2 staff vacancies. There is equipment available for the function.

In summary:

FS172 has capacity to perform the function.

Recommendation for the adjustment of the function:

No adjustments are recommended by the MDB for the 2007/08 assessment period.

3.30 Municipal parks and recreation

Department rendering the service – Municipal parks and recreation

MDB Code	Municipality Name	Name of Department Performing	Only department performing	Name of other department/s	Description of function performed by municipality
----------	-------------------	-------------------------------	----------------------------	----------------------------	---

		function	function	performing the function	
DC17	Motheo District Municipality				
FS171	Naledi Local Municipality	Community Services	Yes		Maintenance of parks
FS172	Mangaung Local Municipality	Parks and Recreation	No	Social Development	Management and maintenance of parks and recreation facilities
FS173	Mantsopa Local Municipality	Corporate Services	Yes		Maintain parks

Function Management – Municipal parks and recreation

MDB Code	Municipality Name	Qualification	Years of local Government Experience	Current position Section 57/Acting/Other	Years in existing position	If acting – reason provided
DC17	Motheo District Municipality					
FS171	Naledi Local Municipality	Diploma HR	12	Acting	1	Post to be advertised
FS172	Mangaung Local Municipality	B Degree - Parks and Recreation Management	13	Permanent	5	
FS173	Mantsopa Local Municipality	IAC Diploma	30	Permanent	19	

Authority - Municipal parks and recreation

MDB Code	Municipality Name	Authority for the function	Municipality understood authority	
			Authorised as Answered	Understands
DC17	Motheo District Municipality	-		No
FS171	Naledi Local Municipality	Yes	Local	Yes
FS172	Mangaung Local Municipality	Yes	Local	Yes
FS173	Mantsopa Local Municipality	Yes	Local	Yes

Service Provision - Municipal parks and recreation

MDB Code	Municipality Name	Indicated that the municipality performed the function					
		2002	2003	2004	2005	2006	2007
DC17	Motheo District Municipality	No	Yes	No	No	No	No
FS171	Naledi Local Municipality	Yes	Yes	Yes	Yes	Yes	Yes
FS172	Mangaung Local Municipality	Yes	Yes	Yes	Yes	Yes	Yes
FS173	Mantsopa Local Municipality	Yes	Yes	Yes	Yes	Yes	Yes

MDB Code	Municipality Name	Municipality makes use of external service provider	Section 78 complete	Service level agreement in place	Municipality makes use of external service provider	Section 78 complete	Service level agreement in place
		2006	2006	2006	2007	2007	2007
DC17	Motheo District Municipality						

FS171	Naledi Local Municipality		No	No		No	No
FS172	Mangaung Local Municipality		No	No		No	No
FS173	Mantsopa Local Municipality		No	No		No	No

Budget information – Municipal parks and recreation

MDB Code	Municipality Name	Operating Budget for function					
		2002/2003	2003/2004	2004/2005	2005/2006	2006/2007	2007/2008
DC17	Motheo District Municipality			0	0	0	0
FS171	Naledi Local Municipality	604727	784770	60000	1002238	1040663	1682698
FS172	Mangaung Local Municipality	16171300	23839250	27588700	23839250	32090830	13518270
FS173	Mantsopa Local Municipality	Part of another budget	972625	1342057	156000	171000	1568263

MDB Code	Municipality Name	Line item or part allocation				
		2003/2004	2004/2005	2005/2006	2006/2007	2007/2008
DC17	Motheo District Municipality					
FS171	Naledi Local Municipality	Line	Part;	Line;	Part;	Part
FS172	Mangaung Local Municipality	Line	Line;	Line;	Line;	Part
FS173	Mantsopa Local Municipality	Line	Line;	Line;	Line;	Line

MDB Code	Municipality Name	Per capita budget			
		2004/2005	2005/2006	2006/2007	2007/2008
DC17	Motheo District Municipality				
FS171	Naledi Local Municipality	2.18	36.47	37.87	61.24
FS172	Mangaung Local Municipality	42.74	36.93	49.72	20.94
FS173	Mantsopa Local Municipality	24.25	2.82	3.09	28.34

Staffing – Municipal parks and recreation

MDB Code	Municipality Name	Staff Available for the function					
		2002	2003	2004	2005	2006	2007
DC17	Motheo District Municipality			0	0	0	0
FS171	Naledi Local Municipality	18	8	8	10	10	14
FS172	Mangaung Local Municipality	278	419	389	185	150	450
FS173	Mantsopa Local Municipality	7	7	22	7	7	25

MDB Code	Municipality Name	Staff per capita ratio				Staff Vacancies		
		2004	2005	2006	2007	2005	2006	2007
DC17	Motheo District Municipality							
FS171	Naledi Local Municipality	3435	2748	2748	1963	7		
FS172	Mangaung Local Municipality	1659	3489	4303	1434			6

FS173	Mantsopa Local Municipality	2516	7906	7906	2214			
-------	-----------------------------	------	------	------	------	--	--	--

Equipment – Municipal parks and recreation

MDB Code	Municipality Name	Equipment available for the function					
		2002	2003	2004	2005	2006	2007
DC17	Motheo District Municipality	No	No	No	No	No	No
FS171	Naledi Local Municipality	Yes	Yes	Yes	Yes	Yes	Yes
FS172	Mangaung Local Municipality	Yes	Yes	Yes	Yes	Yes	Yes
FS173	Mantsopa Local Municipality	Yes	Yes	Yes	Yes	Yes	Yes

Comments and Recommendations – Municipal parks and recreation

Comments:

All three local municipalities perform the municipal parks and recreation function and all do so from a single department.

All three managers have tertiary qualifications. The manager for FS173 has 30 years of local government experience and has been in the position for 19 years while the manager for FS172 has 13 years of local government experience and has been in position for five years. The manager in FS171 is in an acting position.

FS172 received a decrease in budget available since the previous financial year. Per capita budgets range from R20.94 in FS172 to R61.24 in FS171.

FS172 has the highest number of staff available for the function (450) while FS171 has the least (14). FS172 also has six staff vacancies.

All three local municipalities have equipment available for the function.

In summary:

The local municipalities have capacity to perform this function.

Recommendation for the adjustment of the function:

No adjustments are recommended by the MDB for the 2007/08 assessment period.

3.31 Municipal roads

Department rendering the service – Municipal roads

MDB Code	Municipality Name	Name of Department Performing function	Only department performing function	Name of other department/s performing the function	Description of function performed by municipality
DC17	Motheo District Municipality				
FS171	Naledi Local Municipality	Technical Services			Road maintenance
FS172	Mangaung Local Municipality				
FS173	Mantsopa Local Municipality	Technical Services	Yes		Maintain and upgrade roads

Function Management – Municipal roads

MDB Code	Municipality Name	Qualification	Years of local Government Experience	Current position Section 57/Acting/Other	Years in existing position	If acting – reason provided
DC17	Motheo District Municipality					
FS171	Naledi Local Municipality		6	Acting		Post to be advertised
FS172	Mangaung Local Municipality					
FS173	Mantsopa Local Municipality	Masters Eductaion BSC Education	25	MSA Sec 57	3	

Authority - Municipal roads

MDB Code	Municipality Name	Authority for the function	Municipality understood authority	
			Authorised as Answered	Understands
DC17	Motheo District Municipality	No		No
FS171	Naledi Local Municipality	Yes, including DM function	Local	Yes
FS172	Mangaung Local Municipality	Yes, including DM function		No
FS173	Mantsopa Local Municipality	Yes, including DM function	Local	Yes

Service Provision - Municipal roads

MDB Code	Municipality Name	Indicated that the municipality performed the function					
		2002	2003	2004	2005	2006	2007
DC17	Motheo District Municipality	Yes	No	No	No	No	No
FS171	Naledi Local Municipality	Yes	Yes	Yes	Yes	Yes	Yes
FS172	Mangaung Local Municipality	Yes	Yes	Yes	Yes	Yes	No
FS173	Mantsopa Local Municipality	Yes	Yes	Yes	Yes	Yes	Yes

MDB Code	Municipality Name	Municipality makes use of external service provider	Section 78 complete	Service level agreement in place	Municipality makes use of external service provider	Section 78 complete	Service level agreement in place
		2006	2006	2006	2007	2007	2007
DC17	Motheo District Municipality		No	No			
FS171	Naledi Local Municipality		No	No		No	No
FS172	Mangaung Local Municipality		No	No			
FS173	Mantsopa Local Municipality		No	No		No	No

Budget information – Municipal roads

MDB Code	Municipality Name	Operating Budget for function					
		2002/2003	2003/2004	2004/2005	2005/2006	2006/2007	2007/2008

DC17	Motheo District Municipality	7054000	8900000	0	17161710	2592930	0
FS171	Naledi Local Municipality	1003898	1649402	1960003	1901212	2962563	2344155
FS172	Mangaung Local Municipality	72016300	94910410	49156830	43722000	85006440	0
FS173	Mantsopa Local Municipality	2702962	2948562	580675	977946.76	1820000	6578441

MDB Code	Municipality Name	Line item or part allocation				
		2003/2004	2004/2005	2005/2006	2006/2007	2007/2008
DC17	Motheo District Municipality	Line		Line;	Part;	
FS171	Naledi Local Municipality	Line	Line;	Line;	Line;	Line
FS172	Mangaung Local Municipality	Line/Part	Line;	Line;	Line;	
FS173	Mantsopa Local Municipality	Line	Line;	Line;	Line;	Line

MDB Code	Municipality Name	Per capita budget			
		2004/2005	2005/2006	2006/2007	2007/2008
DC17	Motheo District Municipality		23.57	3.56	
FS171	Naledi Local Municipality	71.32	69.19	107.81	85.32
FS172	Mangaung Local Municipality	76.16	67.74	131.70	
FS173	Mantsopa Local Municipality	10.49	17.67	32.89	118.87

Income information – Municipal roads

MDB Code	Operating Income		Function Income as a % of Operation Income	
	Actual 2006/2007	Estimated 2007/2008	2006/2007	2007/2008
DC17		0		0.00%
FS171	825250	2344155	3.03%	8.69%
FS172		0		0.00%
FS173	11901233	6578441	18.73%	4.41%

Staffing – Municipal roads

MDB Code	Municipality Name	Staff Available for the function					
		2002	2003	2004	2005	2006	2007
DC17	Motheo District Municipality			0	0	0	0
FS171	Naledi Local Municipality		6	8	8	8	35
FS172	Mangaung Local Municipality	294		200	180	180	0
FS173	Mantsopa Local Municipality	22	22	38	22	22	27

MDB Code	Municipality Name	Staff per capita ratio				Staff Vacancies		
		2004	2005	2006	2007	2005	2006	2007
DC17	Motheo District Municipality							
FS171	Naledi Local Municipality	3435	3435	3435	785			10
FS172	Mangaung Local Municipality	3227	3586	3586				
FS173	Mantsopa Local Municipality	1456	2516	2516	2050			10

Equipment – Municipal roads

MDB Code	Municipality Name	Equipment available for the function					
		2002	2003	2004	2005	2006	2007
DC17	Motheo District Municipality	No	No	No	No	No	No
FS171	Naledi Local Municipality	Yes	No	Yes	Yes	Yes	Yes
FS172	Mangaung Local Municipality	Yes	Yes	Yes	Yes	Yes	No
FS173	Mantsopa Local Municipality	Yes	Yes	Yes	Yes	Yes	Yes

Comments and Recommendations – Municipal roads**Comments:**

FS171 and FS173 perform the municipal roads function and both do so from a single department. Both municipalities indicate that they render a road maintenance function.

The manager for FS163 has a tertiary qualification, 25 years of local government experience and has been in the position for 3 years while the manager for FS171 has 6 years of local government experience and is in an acting position.

FS171 received a decrease in budget available since the previous financial year while FS173 received an increase. Per capita budgets range from R85.32 in FS171 to R118.87 in FS173.

FS171 has 35 staff members available for the function and 10 vacancies while FS173 has 27 staff members available and 10 vacancies.

Both municipalities have equipment available to render the function.

In summary:

FS171 and FS173 have capacity to perform the function.

Recommendation for the adjustment of the function:

No adjustments are recommended by the MDB for the 2007/08 assessment period.

3.32 Noise pollution**Department rendering the service – Noise pollution**

MDB Code	Municipality Name	Name of Department Performing function	Only department performing function	Name of other department/s performing the function	Description of function performed by municipality
DC17	Motheo District Municipality				
FS171	Naledi Local Municipality				
FS172	Mangaung Local Municipality	Community and Social Development: Environmental Health Div	Yes		Control of noise pollution Monitoring of noise nuisances Handling of complaints Education and awareness
FS173	Mantsopa Local Municipality				

Function Management – Noise pollution

MDB Code	Municipality Name	Qualification	Years of local Government Experience	Current position Section 57/Acting/Other	Years in existing position	If acting – reason provided
DC17	Motheo District Municipality					
FS171	Naledi Local Municipality					
FS172	Mangaung Local Municipality	Nat Dip Public Health	22	Permanent	2	
FS173	Mantsopa Local Municipality					

Authority - Noise pollution

MDB Code	Municipality Name	Authority for the function	Municipality understood authority	
			Authorised as Answered	Understands
DC17	Motheo District Municipality	-		No
FS171	Naledi Local Municipality	Yes		No
FS172	Mangaung Local Municipality	Yes	Local	Yes
FS173	Mantsopa Local Municipality	Yes		No

Service Provision - Noise pollution

MDB Code	Municipality Name	Indicated that the municipality performed the function					
		2002	2003	2004	2005	2006	2007
DC17	Motheo District Municipality	No	Yes	No	No	No	No
FS171	Naledi Local Municipality	No	No	No	Yes	No	No
FS172	Mangaung Local Municipality	Yes	Yes	Yes	Yes	Yes	Yes
FS173	Mantsopa Local Municipality	Yes	Yes	Yes	Yes	Yes	No

MDB Code	Municipality Name	Municipality makes use of external service provider	Section 78 complete	Service level agreement in place	Municipality makes use of external service provider	Section 78 complete	Service level agreement in place
		2006	2006	2006	2007	2007	2007
DC17	Motheo District Municipality						
FS171	Naledi Local Municipality						
FS172	Mangaung Local Municipality		No	No		No	No
FS173	Mantsopa Local Municipality		No	No			

Budget information – Noise pollution

MDB Code	Municipality Name	Operating Budget for function					
		2002/2003	2003/2004	2004/2005	2005/2006	2006/2007	2007/2008
DC17	Motheo District Municipality			0	0	0	0
FS171	Naledi Local			0	479999.99	0	0

	Municipality						
FS172	Mangaung Local Municipality	Part of another budget	100000	106000	120000	160000	130000
FS173	Mantsopa Local Municipality	2993	9500	635293	0	0	0

MDB Code	Municipality Name	Line item or part allocation				
		2003/2004	2004/2005	2005/2006	2006/2007	2007/2008
DC17	Motheo District Municipality					
FS171	Naledi Local Municipality			Line;		
FS172	Mangaung Local Municipality	Part	Part;	Part;	Part;	Part
FS173	Mantsopa Local Municipality	Line	Line;			

MDB Code	Municipality Name	Per capita budget			
		2004/2005	2005/2006	2006/2007	2007/2008
DC17	Motheo District Municipality				
FS171	Naledi Local Municipality		17.47		
FS172	Mangaung Local Municipality	0.16	0.19	0.25	0.20
FS173	Mantsopa Local Municipality	11.48			

Staffing – Noise pollution

MDB Code	Municipality Name	Staff Available for the function					
		2002	2003	2004	2005	2006	2007
DC17	Motheo District Municipality			0	0	0	0
FS171	Naledi Local Municipality			0	1	0	0
FS172	Mangaung Local Municipality	27	18	19	0	20	23
FS173	Mantsopa Local Municipality	2	1	1	1	1	0

MDB Code	Municipality Name	Staff per capita ratio				Staff Vacancies		
		2004	2005	2006	2007	2005	2006	2007
DC17	Motheo District Municipality							
FS171	Naledi Local Municipality		27480			1		
FS172	Mangaung Local Municipality	33971		32272	28063		2	2
FS173	Mantsopa Local Municipality	55342	55342	55342				

Equipment – Noise pollution

MDB Code	Municipality Name	Equipment available for the function					
		2002	2003	2004	2005	2006	2007
DC17	Motheo District Municipality	No	No	No	No	No	No
FS171	Naledi Local Municipality	No	No	No	No	No	No
FS172	Mangaung Local Municipality	Yes	Yes	Yes	Yes	Yes	Yes
FS173	Mantsopa Local Municipality	No	No	No	No	No	No

Comments and Recommendations – Noise pollution

Comments:

FS172 performs the noise pollution function and does so from a single department.

The manager has a tertiary qualification, 22 years of local government experience and has been in the position for 2 years.

FS172 received a decrease in budget available since the previous financial year. It has 23 staff members available for the function and 2 staff vacancies. There is equipment available for the function.

In summary:

FS172 has capacity to perform the function.

Recommendation for the adjustment of the function:

No adjustments are recommended by the MDB for the 2007/08 assessment period.

3.33 Pounds

Department rendering the service – Pounds

MDB Code	Municipality Name	Name of Department Performing function	Only department performing function	Name of other department/s performing the function	Description of function performed by municipality
DC17	Motheo District Municipality				
FS171	Naledi Local Municipality				
FS172	Mangaung Local Municipality				
FS173	Mantsopa Local Municipality				

Function Management – Pounds

MDB Code	Municipality Name	Qualification	Years of local Government Experience	Current position Section 57/Acting/Other	Years in existing position	If acting – reason provided
DC17	Motheo District Municipality					
FS171	Naledi Local Municipality					
FS172	Mangaung Local Municipality					
FS173	Mantsopa Local Municipality					

Authority - Pounds

MDB Code	Municipality Name	Authority for the function	Municipality understood authority	
			Authorised as Answered	Understands
DC17	Motheo District Municipality	-		No
FS171	Naledi Local Municipality	Yes		No
FS172	Mangaung Local Municipality	Yes		No
FS173	Mantsopa Local Municipality	Yes		No

Service Provision - Pounds

MDB Code	Municipality Name	Indicated that the municipality performed the function					
		2002	2003	2004	2005	2006	2007
DC17	Motheo District Municipality	No	Yes	No	No	No	No
FS171	Naledi Local Municipality	No	No	No	Yes	No	No
FS172	Mangaung Local Municipality	No	No	No	No	No	No
FS173	Mantsopa Local Municipality	Yes	Yes	No	No	No	No

MDB Code	Municipality Name	Municipality makes use of external service provider	Section 78 complete	Service level agreement in place	Municipality makes use of external service provider	Section 78 complete	Service level agreement in place
		2006	2006	2006	2007	2007	2007
DC17	Motheo District Municipality						
FS171	Naledi Local Municipality						
FS172	Mangaung Local Municipality						
FS173	Mantsopa Local Municipality						

Budget information – Pounds

MDB Code	Municipality Name	Operating Budget for function					
		2002/2003	2003/2004	2004/2005	2005/2006	2006/2007	2007/2008
DC17	Motheo District Municipality			0	0	0	0
FS171	Naledi Local Municipality			0	479999.99	0	0
FS172	Mangaung Local Municipality			0	0	0	0
FS173	Mantsopa Local Municipality		50000	0	0	0	0

MDB Code	Municipality Name	Line item or part allocation				
		2003/2004	2004/2005	2005/2006	2006/2007	2007/2008
DC17	Motheo District Municipality					
FS171	Naledi Local Municipality			Line;		
FS172	Mangaung Local Municipality					
FS173	Mantsopa Local Municipality	Part				

MDB Code	Municipality Name	Per capita budget			
		2004/2005	2005/2006	2006/2007	2007/2008
DC17	Motheo District Municipality				
FS171	Naledi Local Municipality		17.47		
FS172	Mangaung Local Municipality				
FS173	Mantsopa Local Municipality				

Staffing – Pounds

MDB Code	Municipality Name	Staff Available for the function					
		2002	2003	2004	2005	2006	2007
DC17	Motheo District Municipality			0	0	0	0
FS171	Naledi Local Municipality			0	1	0	0
FS172	Mangaung Local Municipality			0	0	0	0
FS173	Mantsopa Local Municipality	2	2	0	0	0	0

MDB Code	Municipality Name	Staff per capita ratio				Staff Vacancies		
		2004	2005	2006	2007	2005	2006	2007
DC17	Motheo District Municipality							
FS171	Naledi Local Municipality		27480			1		
FS172	Mangaung Local Municipality							
FS173	Mantsopa Local Municipality							

Equipment – Pounds

MDB Code	Municipality Name	Equipment available for the function					
		2002	2003	2004	2005	2006	2007
DC17	Motheo District Municipality	No	No	No	No	No	No
FS171	Naledi Local Municipality	No	No	No	No	No	No
FS172	Mangaung Local Municipality	No	No	No	No	No	No
FS173	Mantsopa Local Municipality	Yes	Yes	No	No	No	No

Comments and Recommendations – Pounds**Comments:**

This function is not performed by any of the municipalities.

Recommendation for the adjustment of the function:

No adjustments are recommended by the MDB for the 2007/08 assessment period.

3.34 Public places**Department rendering the service – Public places**

MDB Code	Municipality Name	Name of Department Performing function	Only department performing function	Name of other department/s performing the function	Description of function performed by municipality
DC17	Motheo District Municipality				
FS171	Naledi Local Municipality				
FS172	Mangaung Local Municipality				
FS173	Mantsopa Local Municipality	Corporate Services	Yes		Manage and maintain municipal property used by public

Function Management – Public places

MDB Code	Municipality Name	Qualification	Years of local Government Experience	Current position Section 57/Acting/Other	Years in existing position	If acting – reason provided
DC17	Motheo District Municipality					
FS171	Naledi Local Municipality					
FS172	Mangaung Local Municipality					
FS173	Mantsopa Local Municipality	IAC Diploma	30	MSA Sec 57	19	

Authority - Public places

MDB Code	Municipality Name	Authority for the function	Municipality understood authority	
			Authorised as Answered	Understands
DC17	Motheo District Municipality	-		No
FS171	Naledi Local Municipality	Yes		No
FS172	Mangaung Local Municipality	Yes		No
FS173	Mantsopa Local Municipality	Yes	Local	Yes

Service Provision - Public places

MDB Code	Municipality Name	Indicated that the municipality performed the function					
		2002	2003	2004	2005	2006	2007
DC17	Motheo District Municipality	No	Yes	No	No	No	No
FS171	Naledi Local Municipality	Yes	Yes	No	Yes	Yes	No
FS172	Mangaung Local Municipality	No	Yes	No	No	No	No
FS173	Mantsopa Local Municipality	Yes	Yes	No	Yes	Yes	Yes

MDB Code	Municipality Name	Municipality makes use of external service provider	Section 78 complete	Service level agreement in place	Municipality makes use of external service provider	Section 78 complete	Service level agreement in place
		2006	2006	2006	2007	2007	2007
DC17	Motheo District Municipality						
FS171	Naledi Local Municipality		No	No			
FS172	Mangaung Local Municipality						
FS173	Mantsopa Local Municipality		No	No		No	No

Budget information – Public places

MDB Code	Municipality Name	Operating Budget for function					
		2002/2003	2003/2004	2004/2005	2005/2006	2006/2007	2007/2008

DC17	Motheo District Municipality			0	0	0	0
FS171	Naledi Local Municipality	90960	529280	0	950663	1102238	0
FS172	Mangaung Local Municipality			0	0	0	0
FS173	Mantsopa Local Municipality	811162	200000	0	0	65000	1568263

MDB Code	Municipality Name	Line item or part allocation				
		2003/2004	2004/2005	2005/2006	2006/2007	2007/2008
DC17	Motheo District Municipality					
FS171	Naledi Local Municipality	Line		Line;	Part;	
FS172	Mangaung Local Municipality					
FS173	Mantsopa Local Municipality	Part			Part;	Part

MDB Code	Municipality Name	Per capita budget			
		2004/2005	2005/2006	2006/2007	2007/2008
DC17	Motheo District Municipality				
FS171	Naledi Local Municipality		34.59	40.11	
FS172	Mangaung Local Municipality				
FS173	Mantsopa Local Municipality			1.17	28.34

Staffing – Public places

MDB Code	Municipality Name	Staff Available for the function					
		2002	2003	2004	2005	2006	2007
DC17	Motheo District Municipality			0	0	0	0
FS171	Naledi Local Municipality	22	3	0	1	1	0
FS172	Mangaung Local Municipality			0	0	0	0
FS173	Mantsopa Local Municipality	26	26	5	27	32	20

MDB Code	Municipality Name	Staff per capita ratio				Staff Vacancies		
		2004	2005	2006	2007	2005	2006	2007
DC17	Motheo District Municipality					7		
FS171	Naledi Local Municipality		27480	27480				
FS172	Mangaung Local Municipality							
FS173	Mantsopa Local Municipality	11068	2050	1729	2767			

Equipment – Public places

MDB Code	Municipality Name	Equipment available for the function					
		2002	2003	2004	2005	2006	2007
DC17	Motheo District Municipality	No	No	No	No	No	No
FS171	Naledi Local Municipality	No	No	No	No	No	No
FS172	Mangaung Local Municipality	No	No	No	No	No	No
FS173	Mantsopa Local Municipality	Yes	Yes	No	Yes	Yes	Yes

Comments and Recommendations – Public places**Comments:**

FS173 performs the public places function and does so from a single department.

The manager has a tertiary qualification, 30 years of local government experience and has been in the position for 19 years.

FS173 received an increase in budget available since the previous financial year. It has 20 staff members available for the function and no staff vacancies. There is equipment available for the function.

In summary:

FS173 has capacity to perform the function.

Recommendation for the adjustment of the function:

No adjustments are recommended by the MDB for the 2007/08 assessment period.

3.35 Refuse removal, refuse dumps and solid waste disposal**Department rendering the service – Refuse removal, refuse dumps and solid waste disposal**

MDB Code	Municipality Name	Name of Department Performing function	Only department performing function	Name of other department/s performing the function	Description of function performed by municipality
DC17	Motheo District Municipality				
FS171	Naledi Local Municipality	Technical Services	Yes		Removal of solid waste Management of dump site
FS172	Mangaung Local Municipality	Solid Waste Management	Yes		Collection of refuse Litter picking
FS173	Mantsopa Local Municipality	Technical Services	Yes		Removal of solid waste from households and businesses

Function Management – Refuse removal, refuse dumps and solid waste disposal

MDB Code	Municipality Name	Qualification	Years of local Government Experience	Current position Section 57/Acting/Other	Years in existing position	If acting – reason provided
DC17	Motheo District Municipality					
FS171	Naledi Local Municipality	ND Civil Engineering	3	Acting		Post to be advertised
FS172	Mangaung Local Municipality	ND Public Health NHD Public Health M Degree Env Management	11	Acting		Post to be filled
FS173	Mantsopa Local Municipality	Masters Eductaion BSC Education	25	MSA Sec 57	3	

Authority - Refuse removal, refuse dumps and solid waste disposal

MDB	Municipality Name	Authority for the function	Authorised as Answered	Understands
			Municipality understood authority	

Code				
DC17	Motheo District Municipality	No		No
FS171	Naledi Local Municipality	Yes, including DM function	Local	Yes
FS172	Mangaung Local Municipality	Yes, including DM function	Local	Yes
FS173	Mantsopa Local Municipality	Yes, including DM function	Local	Yes

Service Provision - Refuse removal, refuse dumps and solid waste disposal

MDB Code	Municipality Name	Indicated that the municipality performed the function					
		2002	2003	2004	2005	2006	2007
DC17	Motheo District Municipality	Yes	No	No	No	Yes	No
FS171	Naledi Local Municipality	Yes	Yes	Yes	Yes	Yes	Yes
FS172	Mangaung Local Municipality	Yes	Yes	Yes	Yes	Yes	Yes
FS173	Mantsopa Local Municipality	Yes	Yes	Yes	Yes	Yes	Yes

MDB Code	Municipality Name	Municipality makes use of external service provider	Section 78 complete	Service level agreement in place	Municipality makes use of external service provider	Section 78 complete	Service level agreement in place
		2006	2006	2006	2007	2007	2007
DC17	Motheo District Municipality		No	No			
FS171	Naledi Local Municipality		No	No		No	No
FS172	Mangaung Local Municipality		No	No		No	No
FS173	Mantsopa Local Municipality		No	No		No	No

Budget information – Refuse removal, refuse dumps and solid waste disposal

MDB Code	Municipality Name	Operating Budget for function					
		2002/2003	2003/2004	2004/2005	2005/2006	2006/2007	2007/2008
DC17	Motheo District Municipality	115000	50000	0	3800000	4500000	0
FS171	Naledi Local Municipality	3319977	2982770	2329633	2684937	2405984	2134472
FS172	Mangaung Local Municipality	87583850	72638050	60826470	59339131	61517870	73608000
FS173	Mantsopa Local Municipality	3213171	4035181	6846468	68487.91	90000	7541922

MDB Code	Municipality Name	Line item or part allocation				
		2003/2004	2004/2005	2005/2006	2006/2007	2007/2008
DC17	Motheo District Municipality	Line		Line;	Part;	
FS171	Naledi Local Municipality	Line	Line;	Line;	Line;	Line
FS172	Mangaung Local Municipality	Line	Line;	Line;Part;	Line;	Line
FS173	Mantsopa Local Municipality	Line	Line;Part;	Line;	Line;	Line

MDB Code	Municipality Name	Per capita budget			
		2004/2005	2005/2006	2006/2007	2007/2008
DC17	Motheo District Municipality		5.22	6.18	
FS171	Naledi Local Municipality	84.78	97.71	87.55	77.68
FS172	Mangaung Local Municipality	94.24	91.94	95.31	114.04
FS173	Mantsopa Local Municipality	123.71	1.24	1.63	136.28

Income information – Refuse removal, refuse dumps and solid waste disposal

MDB Code	Operating Income		Function Income as a % of Operation Income	
	Actual 2006/2007	Estimated 2007/2008	2006/2007	2007/2008
DC17		0		0.00%
FS171	2790820	2134472	10.26%	7.91%
FS172		73608000		4.52%
FS173	9608960	7541922	15.12%	5.05%

Staffing – Refuse removal, refuse dumps and solid waste disposal

MDB Code	Municipality Name	Staff Available for the function					
		2002	2003	2004	2005	2006	2007
DC17	Motheo District Municipality			0	0	0	0
FS171	Naledi Local Municipality	22		16	16	16	16
FS172	Mangaung Local Municipality	518	607	722	492	548	485
FS173	Mantsopa Local Municipality	29	29	49	29	29	35

MDB Code	Municipality Name	Staff per capita ratio				Staff Vacancies		
		2004	2005	2006	2007	2005	2006	2007
DC17	Motheo District Municipality							
FS171	Naledi Local Municipality	1718	1718	1718	1717	7		
FS172	Mangaung Local Municipality	894	1312	1178	1331	61		109
FS173	Mantsopa Local Municipality	1129	1908	1908	1581			10

Equipment – Refuse removal, refuse dumps and solid waste disposal

MDB Code	Municipality Name	Equipment available for the function					
		2002	2003	2004	2005	2006	2007
DC17	Motheo District Municipality	No	No	No	No	No	No
FS171	Naledi Local Municipality	Yes	Yes	Yes	Yes	Yes	Yes
FS172	Mangaung Local Municipality	Yes	Yes	Yes	Yes	Yes	Yes
FS173	Mantsopa Local Municipality	Yes	Yes	Yes	Yes	Yes	Yes

Comments and Recommendations – Refuse removal, refuse dumps and solid waste disposal

Comments:

All three local municipalities perform the refuse removal function and all do so from a single department. Both FS171 and FS173 have indicated removal of solid waste as one of the main aspects of the function while FS172 refers to the collection of refuse and picking up litter.

The managers all have tertiary qualifications. Both managers in FS171 and FS172 are in acting positions while the manager in FS173 is an MSA Section 57 appointment with 25 years of local government experience.

FS171 was the only municipality to receive a decrease in budget available since the previous financial year. All three municipalities use line items for the function. Per capita budgets range from R77.68 in FS171 to R136.28 in FS173. The function income contributes to 4.52% of operating income in FS172 and almost 8% of operating income in FS171.

FS172 has the highest number of staff available for the function (485) while FS171 has the least (16). In addition, FS172 has 109 vacancies. FS173 has ten staff vacancies.

All three local municipalities have equipment available for the function.

In summary:

The local municipalities have capacity to perform this function.

Recommendation for the adjustment of the function:

No adjustments are recommended by the MDB for the 2007/08 assessment period.

3.36 Street trading

Department rendering the service – Street trading

MDB Code	Municipality Name	Name of Department Performing function	Only department performing function	Name of other department/s performing the function	Description of function performed by municipality
DC17	Motheo District Municipality				
FS171	Naledi Local Municipality				
FS172	Mangaung Local Municipality				
FS173	Mantsopa Local Municipality	Corporate Services	Yes		Regulate and inspect street trading

Function Management – Street trading

MDB Code	Municipality Name	Qualification	Years of local Government Experience	Current position Section 57/Acting/Other	Years in existing position	If acting – reason provided
DC17	Motheo District Municipality					
FS171	Naledi Local Municipality					
FS172	Mangaung Local Municipality					
FS173	Mantsopa Local Municipality	IAC Diploma	30	MSA Sec 57	19	

Authority - Street trading

MDB Code	Municipality Name	Authority for the function	Authorised as Answered	Understands
			Municipality understood authority	

DC17	Motheo District Municipality	-		No
FS171	Naledi Local Municipality	Yes		No
FS172	Mangaung Local Municipality	Yes		No
FS173	Mantsopa Local Municipality	Yes	Local	Yes

Service Provision - Street trading

MDB Code	Municipality Name	Indicated that the municipality performed the function					
		2002	2003	2004	2005	2006	2007
DC17	Motheo District Municipality	No	Yes	No	No	No	No
FS171	Naledi Local Municipality	No	No	No	Yes	No	No
FS172	Mangaung Local Municipality	Yes	Yes	No	No	Yes	No
FS173	Mantsopa Local Municipality	No	Yes	Yes	No	No	Yes

MDB Code	Municipality Name	Municipality makes use of external service provider	Section 78 complete	Service level agreement in place	Municipality makes use of external service provider	Section 78 complete	Service level agreement in place
		2006	2006	2006	2007	2007	2007
DC17	Motheo District Municipality						
FS171	Naledi Local Municipality						
FS172	Mangaung Local Municipality		No	No			
FS173	Mantsopa Local Municipality					No	No

Budget information – Street trading

MDB Code	Municipality Name	Operating Budget for function					
		2002/2003	2003/2004	2004/2005	2005/2006	2006/2007	2007/2008
DC17	Motheo District Municipality			0	0	0	0
FS171	Naledi Local Municipality			0	60000	0	0
FS172	Mangaung Local Municipality	Part of another budget	150000	0	0	70000	0
FS173	Mantsopa Local Municipality	2993	49487	57956495	0	0	939621

MDB Code	Municipality Name	Line item or part allocation				
		2003/2004	2004/2005	2005/2006	2006/2007	2007/2008
DC17	Motheo District Municipality					
FS171	Naledi Local Municipality			Line;		
FS172	Mangaung Local Municipality	Part			Line;	
FS173	Mantsopa Local Municipality	Line	Line;			Part

MDB Code	Municipality Name	Per capita budget			
		2004/2005	2005/2006	2006/2007	2007/2008
DC17	Motheo District Municipality				
FS171	Naledi Local Municipality		2.18		
FS172	Mangaung Local Municipality			0.11	
FS173	Mantsopa Local Municipality	1047.24			16.98

Staffing – Street trading

MDB Code	Municipality Name	Staff Available for the function					
		2002	2003	2004	2005	2006	2007
DC17	Motheo District Municipality			0	0	0	0
FS171	Naledi Local Municipality			0	1	0	0
FS172	Mangaung Local Municipality	4	8	0	0	1	0
FS173	Mantsopa Local Municipality	2	1	1	0	0	2

MDB Code	Municipality Name	Staff per capita ratio				Staff Vacancies		
		2004	2005	2006	2007	2005	2006	2007
DC17	Motheo District Municipality							
FS171	Naledi Local Municipality		27480					
FS172	Mangaung Local Municipality			645441				
FS173	Mantsopa Local Municipality	55342			27671			2

Equipment – Street trading

MDB Code	Municipality Name	Equipment available for the function					
		2002	2003	2004	2005	2006	2007
DC17	Motheo District Municipality	No	No	No	No	No	No
FS171	Naledi Local Municipality	No	No	No	Yes	No	No
FS172	Mangaung Local Municipality	Yes	Yes	No	No	Yes	No
FS173	Mantsopa Local Municipality	No	No	Yes	No	No	Yes

Comments and Recommendations – Street trading

Comments:

FS173 performs the street trading function and does so from a single department.

The manager has a tertiary qualification, 30 years of local government experience and has been in the position for 19 years.

FS173 received an increase in budget available since the previous financial year. It has 2 staff members available for the function and 2 staff vacancies. There is equipment available for the function.

In summary:

FS173 has capacity to perform the function.

Recommendation for the adjustment of the function:

No adjustments are recommended by the MDB for the 2007/08 assessment period.

3.37 Street lighting

Department rendering the service – Street lighting

MDB Code	Municipality Name	Name of Department Performing function	Only department performing function	Name of other department/s performing the function	Description of function performed by municipality
DC17	Motheo District Municipality				
FS171	Naledi Local Municipality	Technical Services	Yes		Maintenance and management of street lighting
FS172	Mangaung Local Municipality	Technical Services	Yes		Maintenance of street lights
FS173	Mantsopa Local Municipality	Technical Services	Yes		Provide street lights

Function Management – Street lighting

MDB Code	Municipality Name	Qualification	Years of local Government Experience	Current position Section 57/Acting/Other	Years in existing position	If acting – reason provided
DC17	Motheo District Municipality					
FS171	Naledi Local Municipality	ND Civil Engineering	3	Acting		Post to be advertised
FS172	Mangaung Local Municipality	B Tech Env Health	4	Acting		Post to be advertised
FS173	Mantsopa Local Municipality	Masters Education BSC Education	25	MSA Sec 57	3	

Authority - Street lighting

MDB Code	Municipality Name	Authority for the function	Municipality understood authority	
			Authorised as Answered	Understands
DC17	Motheo District Municipality	-		No
FS171	Naledi Local Municipality	Yes	Local	Yes
FS172	Mangaung Local Municipality	Yes	Local	Yes
FS173	Mantsopa Local Municipality	Yes	Local	Yes

Service Provision - Street lighting

MDB Code	Municipality Name	Indicated that the municipality performed the function					
		2002	2003	2004	2005	2006	2007
DC17	Motheo District Municipality	Yes	Yes	No	No	No	No
FS171	Naledi Local Municipality	Yes	Yes	Yes	No	Yes	Yes
FS172	Mangaung Local Municipality	Yes	Yes	Yes	Yes	No	No
FS173	Mantsopa Local Municipality	Yes	Yes	Yes	Yes	Yes	Yes

MDB Code	Municipality Name	Municipality makes use of external service provider	Section 78 complete	Service level agreement in place	Municipality makes use of external service provider	Section 78 complete	Service level agreement in place
		2006	2006	2006	2007	2007	2007
DC17	Motheo District Municipality						
FS171	Naledi Local Municipality		No	No		No	No
FS172	Mangaung Local Municipality	Centlec	Yes	Yes	Centlec	Yes	Yes
FS173	Mantsopa Local Municipality		No	No		No	No

Budget information – Street lighting

MDB Code	Municipality Name	Operating Budget for function					
		2002/2003	2003/2004	2004/2005	2005/2006	2006/2007	2007/2008
DC17	Motheo District Municipality	1448100	1400000	0	0	0	0
FS171	Naledi Local Municipality	15573487	100000	120000	200000	220000	627764
FS172	Mangaung Local Municipality	12378820	12580820	12805870	8000000	14400000	511422000
FS173	Mantsopa Local Municipality	88000	52000	250000	144810	159000	12220112

MDB Code	Municipality Name	Line item or part allocation				
		2003/2004	2004/2005	2005/2006	2006/2007	2007/2008
DC17	Motheo District Municipality	Line				
FS171	Naledi Local Municipality	Line	Part;	Line;	Part;	Part
FS172	Mangaung Local Municipality	Line	Line;	Line;	Line;	Part
FS173	Mantsopa Local Municipality	Part	Part;	Line;	Line;	Part

MDB Code	Municipality Name	Per capita budget			
		2004/2005	2005/2006	2006/2007	2007/2008
DC17	Motheo District Municipality				
FS171	Naledi Local Municipality	4.37	7.28	8.01	22.85
FS172	Mangaung Local Municipality	19.84	12.39	22.31	792.36
FS173	Mantsopa Local Municipality	4.52	2.62	2.87	220.81

Staffing – Street lighting

MDB Code	Municipality Name	Staff Available for the function					
		2002	2003	2004	2005	2006	2007
DC17	Motheo District Municipality			0	0	0	0
FS171	Naledi Local Municipality	4	2	4	4	4	12
FS172	Mangaung Local Municipality	16	11	11	8	13	0
FS173	Mantsopa Local Municipality	4	4	11	4	4	20

MDB Code	Municipality Name	Staff per capita ratio				Staff Vacancies		
		2004	2005	2006	2007	2005	2006	2007
DC17	Motheo District Municipality							
FS171	Naledi Local Municipality	6870	6870	6870	2290			
FS172	Mangaung Local Municipality	58676	80680	49649		6	6	
FS173	Mantsopa Local Municipality	5031	13836	13836	2767			

Equipment – Street lighting

MDB Code	Municipality Name	Equipment available for the function					
		2002	2003	2004	2005	2006	2007
DC17	Motheo District Municipality	No	No	No	No	No	No
FS171	Naledi Local Municipality	Yes	Yes	Yes	Yes	Yes	Yes
FS172	Mangaung Local Municipality	Yes	Yes	No	Yes	No	Yes
FS173	Mantsopa Local Municipality	Yes	Yes	Yes	Yes	Yes	Yes

Comments and Recommendations – Street lighting

Comments:

All three local municipalities perform the street lighting function and all do so from a single department. Each municipality has indicated the maintenance and/or provision of street lights as the main aspect of the function.

All three managers have tertiary qualifications. The managers for FS171 and FS172 are in acting positions. The manager for FS173 has 25 years of local government experience and has been in the position for 3 years.

Each municipality has received an increase in budget when compared to the previous financial year. Per capita budgets range from R22.85 in FS171 to R792.36 in FS172.

FS172 does not have any staff available for the function and there are no staff vacancies. The other two municipalities have staff available to render the function.

All three local municipalities have equipment available for the function.

In summary:

The local municipalities have capacity to perform this function.

Recommendation for the adjustment of the function:

No adjustments are recommended by the MDB for the 2007/08 assessment period.

3.38 Traffic and parking

Department rendering the service – Traffic and parking

MDB Code	Municipality Name	Name of Department Performing function	Only department performing function	Name of other department/s performing the function	Description of function performed by municipality
DC17	Motheo District Municipality				
FS171	Naledi Local Municipality				
FS172	Mangaung Local Municipality	Traffic and Security	Yes		Rendering of parking services
FS173	Mantsopa Local Municipality	Corporate Services	Yes		Traffic control Law enforcement

Function Management – Traffic and parking

MDB Code	Municipality Name	Qualification	Years of local Government Experience	Current position Section 57/Acting/Other	Years in existing position	If acting – reason provided
DC17	Motheo District Municipality					
FS171	Naledi Local Municipality					
FS172	Mangaung Local Municipality	Primary Teachers Diploma (Primary Grade A Teacher)	0.5	Permanent		
FS173	Mantsopa Local Municipality		26	Permanent	26	

Authority - Traffic and parking

MDB Code	Municipality Name	Authority for the function	Municipality understood authority	
			Authorised as Answered	Understands
DC17	Motheo District Municipality	-		No
FS171	Naledi Local Municipality	Yes		No
FS172	Mangaung Local Municipality	Yes	Local	Yes
FS173	Mantsopa Local Municipality	Yes	Local	Yes

Service Provision - Traffic and parking

MDB Code	Municipality Name	Indicated that the municipality performed the function					
		2002	2003	2004	2005	2006	2007
DC17	Motheo District Municipality	No	Yes	No	No	No	No
FS171	Naledi Local Municipality	No	No	No	No	No	No
FS172	Mangaung Local Municipality	Yes	Yes	Yes	Yes	Yes	Yes
FS173	Mantsopa Local Municipality	Yes	Yes	Yes	Yes	Yes	Yes

MDB Code	Municipality Name	Municipality makes use of external service provider	Section 78 complete	Service level agreement in place	Municipality makes use of external service provider	Section 78 complete	Service level agreement in place
		2006	2006	2006	2007	2007	2007
DC17	Motheo District Municipality						
FS171	Naledi Local Municipality						
FS172	Mangaung Local Municipality		No	No		No	No
FS173	Mantsopa Local Municipality		No	No		No	No

Budget information – Traffic and parking

MDB Code	Municipality Name	Operating Budget for function					
		2002/2003	2003/2004	2004/2005	2005/2006	2006/2007	2007/2008
DC17	Motheo District Municipality			0	0	0	0
FS171	Naledi Local Municipality			0	0	0	0
FS172	Mangaung Local Municipality	14899750	16610010	7656300	8387120	105533	12425820
FS173	Mantsopa Local Municipality	469244	611986	682101	770000	929319	926773

MDB Code	Municipality Name	Line item or part allocation				
		2003/2004	2004/2005	2005/2006	2006/2007	2007/2008
DC17	Motheo District Municipality					
FS171	Naledi Local Municipality					
FS172	Mangaung Local Municipality	Part	Line;	Line;	Line;	Part
FS173	Mantsopa Local Municipality	Line	Line;	Line;	Line;	Line

MDB Code	Municipality Name	Per capita budget			
		2004/2005	2005/2006	2006/2007	2007/2008
DC17	Motheo District Municipality				
FS171	Naledi Local Municipality				
FS172	Mangaung Local Municipality	11.86	12.99	0.16	19.25
FS173	Mantsopa Local Municipality	12.33	13.91	16.79	16.75

Staffing – Traffic and parking

MDB Code	Municipality Name	Staff Available for the function					
		2002	2003	2004	2005	2006	2007
DC17	Motheo District Municipality			0	0	0	0
FS171	Naledi Local Municipality			0	0	0	0
FS172	Mangaung Local Municipality	114	147	56	51	45	4
FS173	Mantsopa Local Municipality	4	5	3	4	4	2

MDB Code	Municipality Name	Staff per capita ratio				Staff Vacancies		
		2004	2005	2006	2007	2005	2006	2007
DC17	Motheo District Municipality							
FS171	Naledi Local Municipality							
FS172	Mangaung Local Municipality	11526	12656	14343	161360	5	10	4
FS173	Mantsopa Local Municipality	18447	13836	13836	27671			2

Equipment – Traffic and parking

MDB Code	Municipality Name	Equipment available for the function					
		2002	2003	2004	2005	2006	2007
DC17	Motheo District Municipality	No	No	No	No	No	No

FS171	Naledi Local Municipality	No	No	No	No	No	No
FS172	Mangaung Local Municipality	Yes	Yes	Yes	Yes	Yes	Yes
FS173	Mantsopa Local Municipality	Yes	No	Yes	Yes	Yes	Yes

Comments and Recommendations – Traffic and parking

Comments:

FS172 and FS173 perform the control of public nuisance function and both do so from a single department. FS172 indicates that it renders a parking service while FS173 controls traffic and provides law enforcement.

The manager in FS172 has a tertiary qualification. The manager for FS173 has 26 years of local government experience and has been in the position for 26 years while the manager for FS172 has only 6 months of local government experience.

FS172 received an increase in budget available since the previous financial year while FS173 received had a slight decrease. Per capita budgets range from R16.75 in FS173 to R19.25 in FS172.

FS172 has 4 staff members available for the function and 4 vacancies while FS173 has 2 staff members available and 2 vacancies.

Both municipalities have equipment available to render the function.

In summary:

FS172 and FS173 have capacity to perform the function.

Recommendation for the adjustment of the function:

No adjustments are recommended by the MDB for the 2007/08 assessment period.

4. ADDITIONAL FUNCTIONS PERFORMED

MDB Code	Municipality Name	Function	Budget allocation	Staff	Assigned By
----------	-------------------	----------	-------------------	-------	-------------

Comments

None of the municipalities perform any additional functions.

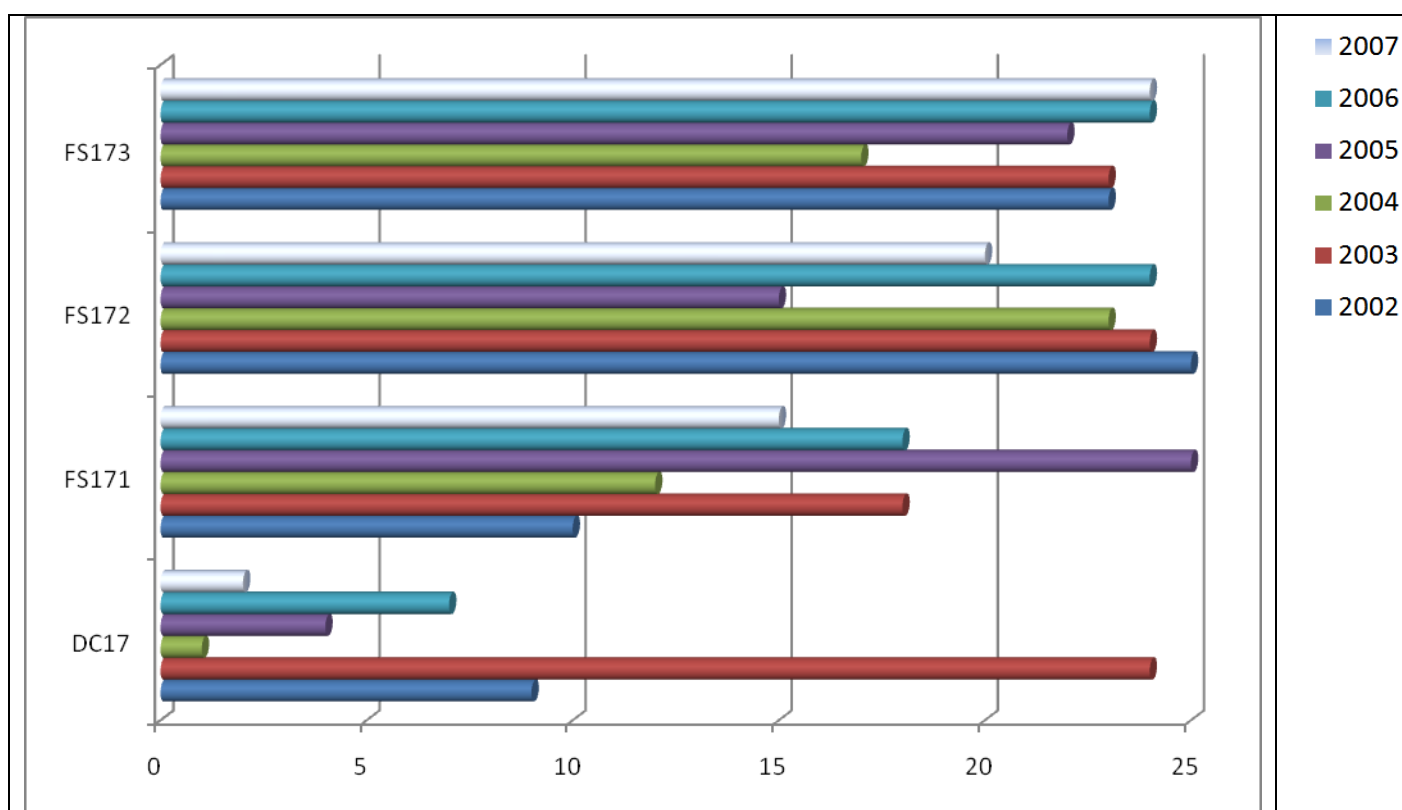
5. CONCLUSION

Table indicating Number of Functions Performed Year on Year

MDB Code	Municipality Name	2002	2003	2004	2005	2006	2007
DC17	Motheo District Municipality	9	24	1	4	7	2
FS171	Naledi Local Municipality	10	18	12	25	18	15
FS172	Mangaung Local Municipality	25	24	23	15	24	20
FS173	Mantsopa Local Municipality	23	23	17	22	24	24

Table indicating Percentage of Functions Performed Year on Year

MDB Code	Municipality Name	2002 %	2003 %	2004 %	2005 %	2006 %	2007 %
DC17	Motheo District Municipality	26.47%	70.59%	2.94%	11.76%	18.42%	5.26%
FS171	Naledi Local Municipality	29.41%	52.94%	35.29%	73.53%	47.37%	39.47%
FS172	Mangaung Local Municipality	73.53%	70.59%	67.65%	44.12%	63.16%	52.63%
FS173	Mantsopa Local Municipality	67.65%	67.65%	50.00%	64.71%	63.16%	63.16%



Comments

None of the municipalities have increased the number of functions that they perform since 2006 although FS173 has had no change in the number of functions performed since the previous year.

FS173 performs the largest number of functions (63%) followed by FS172 (53%). FS171 performs just 39% of its functions while DC17 performs only 5% of all functions.

FS172 and DC17 are the only municipalities that are now performing fewer functions in 2007, than they did in 2002. FS173 has had a slight increase in the number of functions performed since 2002.

FS171 has shown the largest improvement in the number of functions performed, as they were performing less than a third of functions in 2002 and performed 39% of functions in 2007. In 2005 however, they were performing almost 74% of functions and so have had a decrease since then.

It would appear that the following functions are either not or are poorly performed within the district:

- Air pollution
- Local tourism
- Municipal airport
- Municipal public transport
- Pontoons and ferries
- Trading regulations
- Beaches and Amusement facilities
- Billboards and the display of advertisements in public places
- Facilities for the accommodation, care and burial of animals
- Fencing and fences
- Licensing of dogs
- Licensing and control of undertakings that sell food to the public
- Markets
- Municipal abattoirs
- Noise pollution
- Pounds
- Public places
- Street trading

* Generally, the quality of the data is satisfactory. While there appear to be gaps in the information, it is often in cases where a function is not performed or is under-performed. Certainly, the information at the MDB's disposal is sufficient to facilitate an assessment of a municipality's ability to perform its powers and functions.

Motheo District Municipality (DC17)

MDB Code	Name of Municipality	MDB 2002/2003 Recommendation to MEC Gazette No 58 amended by Gazette No 123, 2005	MDB 2007/2008 Recommendation to MEC
DC17	Motheo District Municipality	The following powers and functions or aspects thereof in the area of the local municipalities indicated in brackets: Schedule 4 Part B Local Tourism (FS171) Municipal Planning (FS171) - Municipal public transport (FS171; FS172; FS173)	Remove <ul style="list-style-type: none"> • Municipal public transport (FS171; FS172; FS173)
FS171	Naledi Local Municipality	84(1)(e) - Solid waste 84(1)(f) (Roads) 84(1)(j) (Fire fighting services) 84(1)(l) (Cemeteries) 84(1)(n) - relating to the above functions	<i>No change</i>
FS172	Mangaung Local Municipality	84(1)(e) - Solid waste 84(1)(f) (Roads) 84(1)(h) (Airports) 84(1)(j) (Fire fighting services) 84(1)(k) – Markets only 84(1)(l) (Cemeteries) 84(1)(n) - relating to the above functions	<i>No change</i>
FS173	Mantsopa Local Municipality	84(1)(e) - Solid waste 84(1)(f) (Roads) 84(1)(j) (Fire fighting services) 84(1)(l) (Cemeteries) 84(1)(n) - relating to the above functions	<i>No change</i>